

Simplified Legend - Robert's Arm Volcanic Belt Only

Late Ordovician – Early Silurian
Sops Head Complex (in part)

IO-eS.SHC *Tommys Arm Bridge mélange*

Late Ordovician - Powderhorn Lake Tract
Powderhorn Brook Outflow Division

IO:PLs *metapelite*
IO:PLv *metarhyolite*

Late Ordovician - Baker Brook Tract
Rocky Brook Division

IO:Brb3 *argillite*
IO:Brb2 *wacke*
IO:Brb *Rocky Brook unseparated*

Middle Ordovician - Baker Brook Tract
Eastern Baker Lake Brook Division

mO:Beb2 *metawacke*
mO:Beb1 *metarhyolite tuff*

Middle Ordovician - Catamaran Brook Tract
Joes Lake Division

mO:CBv3 *pillowed tholeiite*
mO:CBv2 *felsic-mafic tuffs*
mO:CBv1 *basaltic andesite*

Middle Ordovician - Sops Head Complex (in part)
Burtens Harbour - Herring Cove Division

mO:BHCs *siltstone*
mO:BHCv *alkali basalt*

Middle Ordovician - Burnt Pond Tract
Julies Harbour Division

mO:BPpg *migmatitic paragneiss*
mO:BPsh *hornfelsic schist*
mO:BPp *sulphidic phyllite*

Middle Ordovician - Crescent Composite Tract
Deer Pond Division

mO:CCRs *sandstone and chert*
mO:CCv2 *rhyolite tuff*
mO:CCv1 *tholeiitic basalt*

Middle Ordovician - South Brook Tract
Black Gull Island Division

mO:Rgi *pillowed tholeiite*

EARLY ORDOVICIAN - GULLBRIDGE TRACT
Powderhouse Division

eO:Rph *tuffaceous wacke*

Gull Brook Bridge Division

eO:Rg3 *felsic-mafic tuffs*
eO:Rg2 *pumiceous wacke*
eO:Rg1 *andesite and komatite*
eO:Rg *unseparated anthophyllite schist*

Loon Pond Intrusive Suite

eO:FLg *granite*
eO:FLgd *granodiorite*

Dawes Pond Brook Division

eO:Rdbf *rhyolite breccia*
eO:Rdbm *pillow lava*
eO:Rdb3 *calc-alkaline basalt*
eO:Rdb2 *felsic-mafic tuffs*
eO:Rdb1 *rhyodacite*
eO:Rdb *Dawes Pond Brook unseparated*

West Lake Brook Division

eO:Rwb5 *flood basalt*
eO:Rwb4 *calc-alkaline gabbro*
eO:Rwb3 *basaltic andesite*
eO:Rwb2 *pillowed arc tholeiite*
eO:Rwb1 *high-alumina basalt*
eO:Rwb *West Lake Brook unseparated*

Firetower Hill Intrusive Suite

eO:Rspf *quartz-feldspar porphyry*

Starkes Pond Division

eO:Rsp *banded rhyolite*
eO:Rsp1 *ash tuff*
eO:Rspb *rhyolite breccia*
eO:Rsp? *Starkes Pond unseparated*

Tectonic Terranes

eO:RCm *Mud Pond unseparated*
eO:RCb *Boot Harbour unseparated*



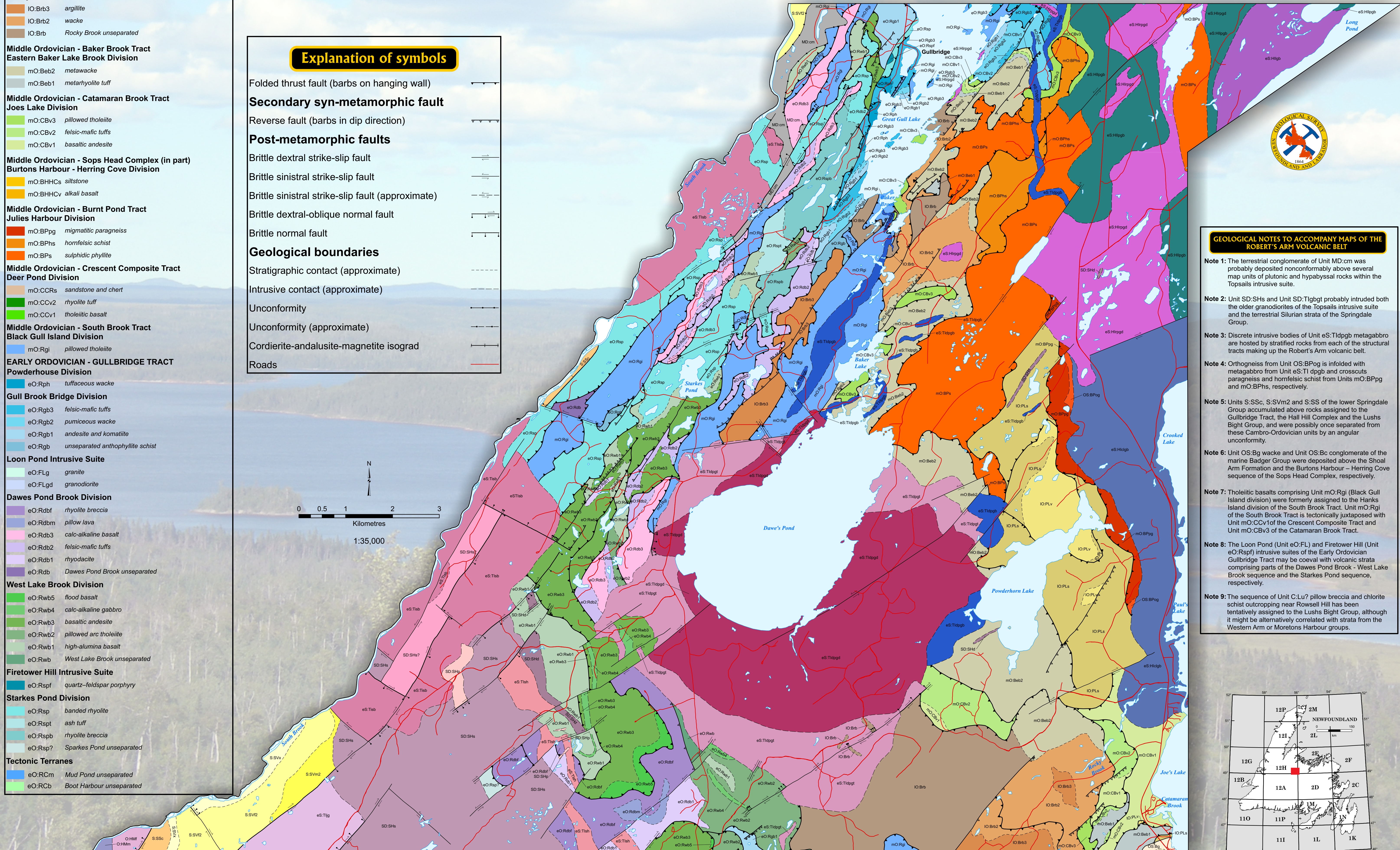
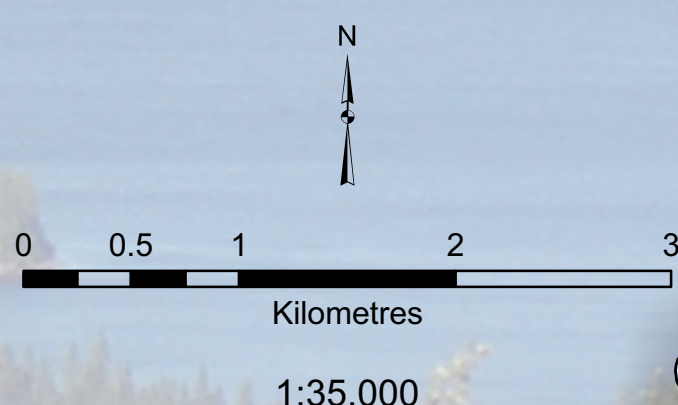
**Geological Map of the Powderhorn Lake – Baker Brook area [NTS 12H1, 2E4]:
Early – Late Ordovician Robert's Arm volcanic belt at 1: 35 000 scale**

Brian O'Brien, Peter Desveaux and Matt Clarke



Explanation of symbols

- Folded thrust fault (barbs on hanging wall)
- Secondary syn-metamorphic fault**
- Reverse fault (barbs in dip direction)
- Post-metamorphic faults**
- Brittle dextral strike-slip fault
- Brittle sinistral strike-slip fault
- Brittle sinistral strike-slip fault (approximate)
- Brittle dextral-oblique normal fault
- Brittle normal fault
- Geological boundaries**
- Stratigraphic contact (approximate)
- Intrusive contact (approximate)
- Unconformity
- Unconformity (approximate)
- Cordierite-andalusite-magnetite isograd
- Roads



GEOLOGICAL NOTES TO ACCOMPANY MAPS OF THE ROBERT'S ARM VOLCANIC BELT

- Note 1:** The terrestrial conglomerate of Unit MD:cm was probably deposited nonconformably above several map units of plutonic and hypabyssal rocks within the Topsails intrusive suite.
- Note 2:** Unit SD:SHs and Unit SD:Tlqbg probably intruded both the older granodiorites of the Topsails intrusive suite and the terrestrial Silurian strata of the Springdale Group.
- Note 3:** Discrete intrusive bodies of Unit eS:Tldpgb metabasalt are hosted by stratified rocks from each of the structural tracts making up the Robert's Arm volcanic belt.
- Note 4:** Orthogneiss from Unit OS:BPog is infolded with metabasalt from Unit eS:Tl dpgb and crosscuts paragneiss and hornfelsic schist from Units mO:BPpg and mO:BPsh, respectively.
- Note 5:** Units S:SSc, S:SVm2 and S:SS of the lower Springdale Group accumulated above rocks assigned to the Gullbridge Tract, the Hall Hill Complex and the Lushs Bight Group, and were possibly once separated from these Cambro-Ordovician units by an angular unconformity.
- Note 6:** Unit OS:Bg wacke and Unit OS:Bc conglomerate of the marine Badger Group were deposited above the Shoal Arm Formation and the Burtens Harbour – Herring Cove sequence of the Sops Head Complex, respectively.
- Note 7:** Tholeiitic basalts comprising Unit mO:Rgi (Black Gull Island division) were formerly assigned to the Hanks Island division of the South Brook Tract. Unit mO:Rgi of the South Brook Tract is tectonically juxtaposed with Unit mO:CCv1 of the Crescent Composite Tract and Unit mO:CBv3 of the Catamaran Brook Tract.
- Note 8:** The Loon Pond (Unit eO:FL) and Firetower Hill (Unit eO:Rspf) intrusive suites of the Early Ordovician Gullbridge Tract may be coeval with volcanic strata comprising parts of the Dawes Pond Brook - West Lake Brook sequence and the Starkes Pond sequence, respectively.
- Note 9:** The sequence of Unit C:Lu? pillow breccia and chlorite schist outcropping near Rowsell Hill has been tentatively assigned to the Lushs Bight Group, although it might be alternatively correlated with strata from the Western Arm or Moretons Harbour groups.

