

Greg Stapleton and Jan Smith

The Mineral Occurrence Data System (MODS) is an important mineral exploration and research tool that offers fast and easy access to mineral occurrence information throughout Newfoundland and Labrador. The MODS is composed of summaries of data including geological descriptions, location, mineralogy, deposit type, bibliography, work histories, resource and/or reserve statistics and analytical results on known mineral occurrences. The database is updated and added to continuously.

Format and delivery mechanisms

Most MODS users access records through the internet via the Geological Survey website. The standard website interface allows the database to be searched using geographical and/or geological criteria to retrieve specific sets of records for more detailed analysis. MODS data are also displayed graphically through the online Geoscience Atlas in conjunction with other geographical and geological data, and can be queried in a more limited manner through this graphical interface.

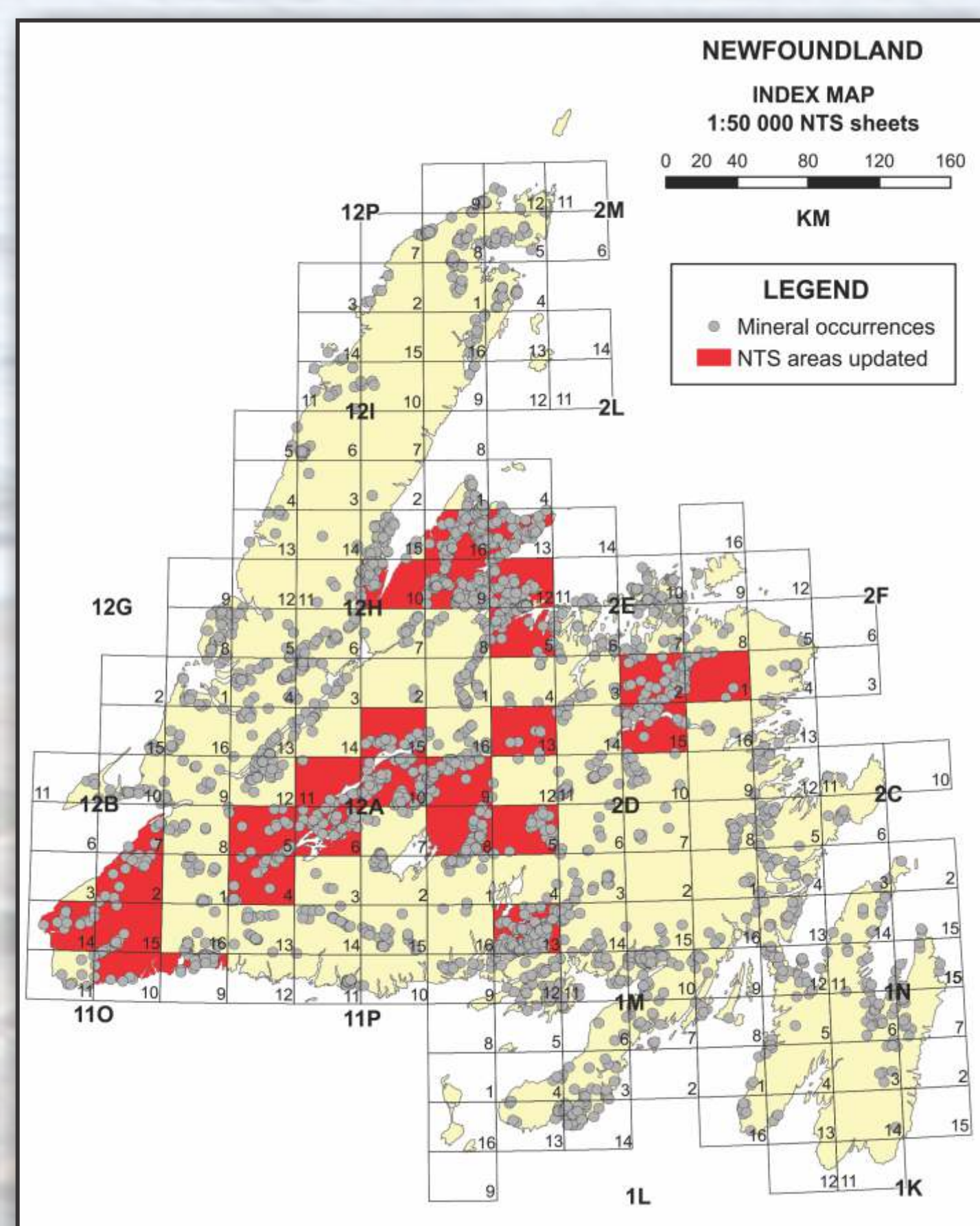


Figure 1

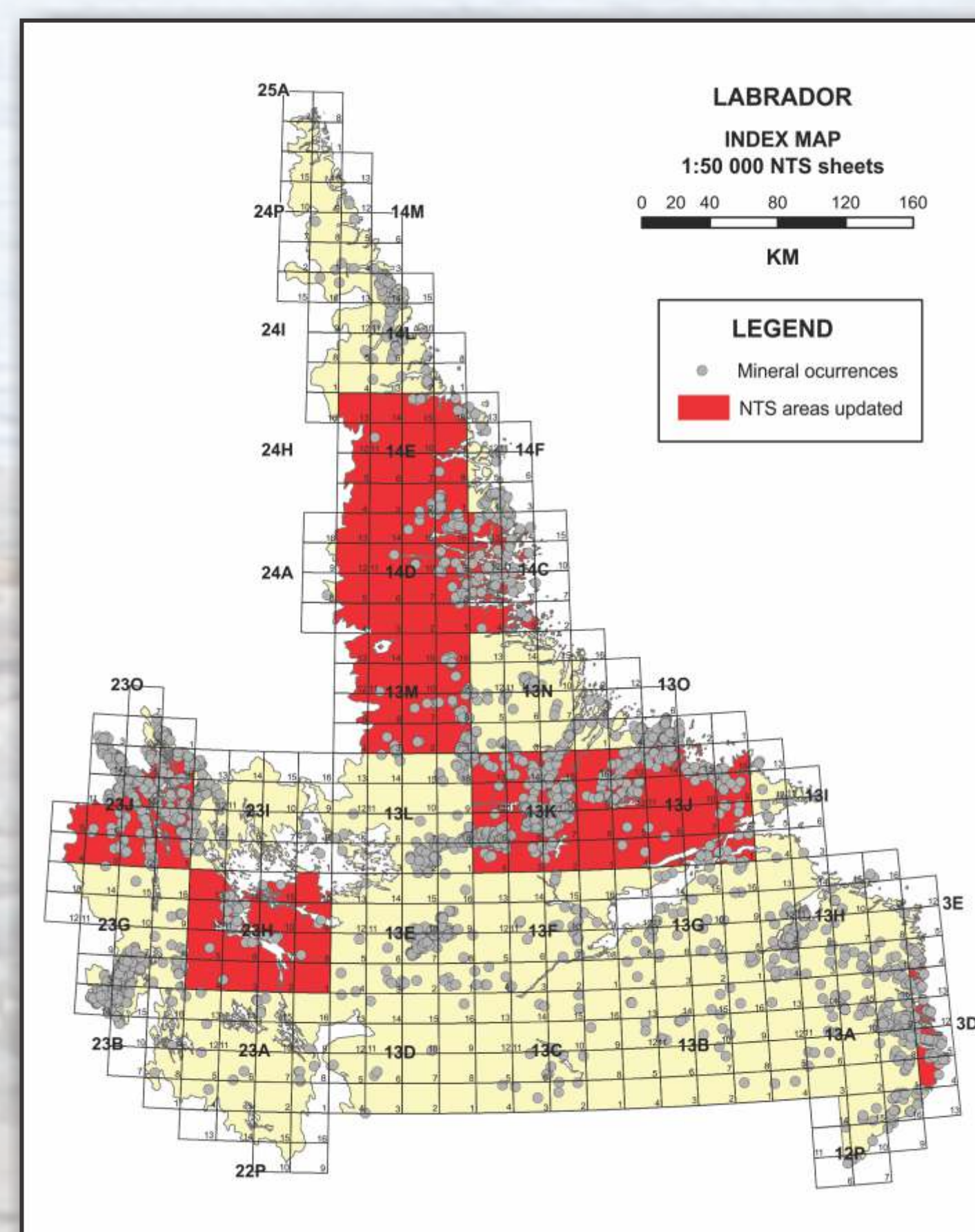


Figure 2

Developments in 2016

Updates in 2016 were implemented on a province-wide basis using data mainly taken from mineral industry assessment reports and press releases. Areas updated include parts of 1M, 2D, 2E, 11O, 12A, 12B and 12H (Newfoundland), and 3D, 13J, 13K, 13M, 14C, 14D, 14E, 23H and 23J (Labrador). In 2016, we continued to achieve consistent delivery of information through both the database and the graphical interface with updated and new records copied to the public domain on a 24 hour basis.

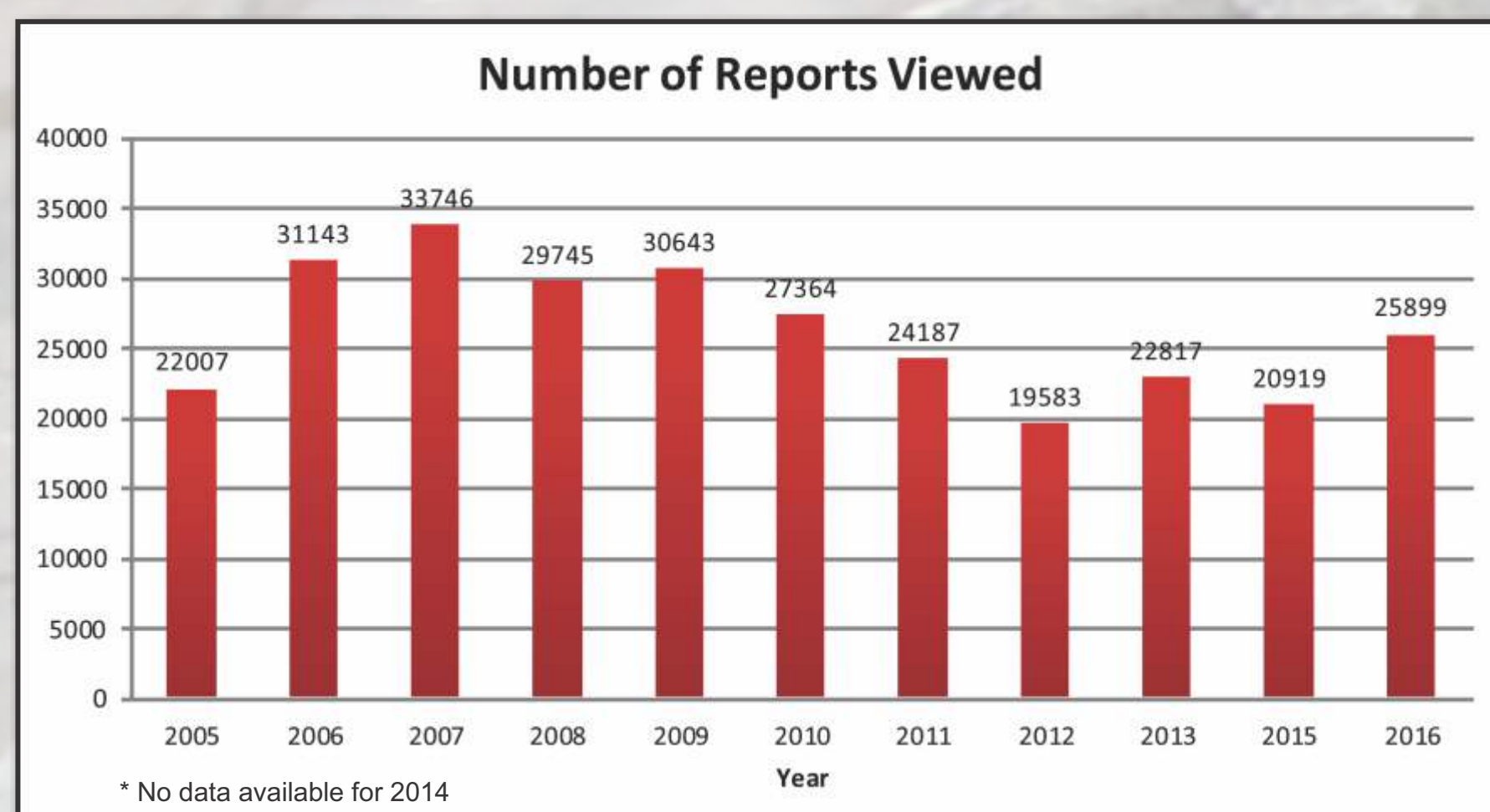


Figure 3

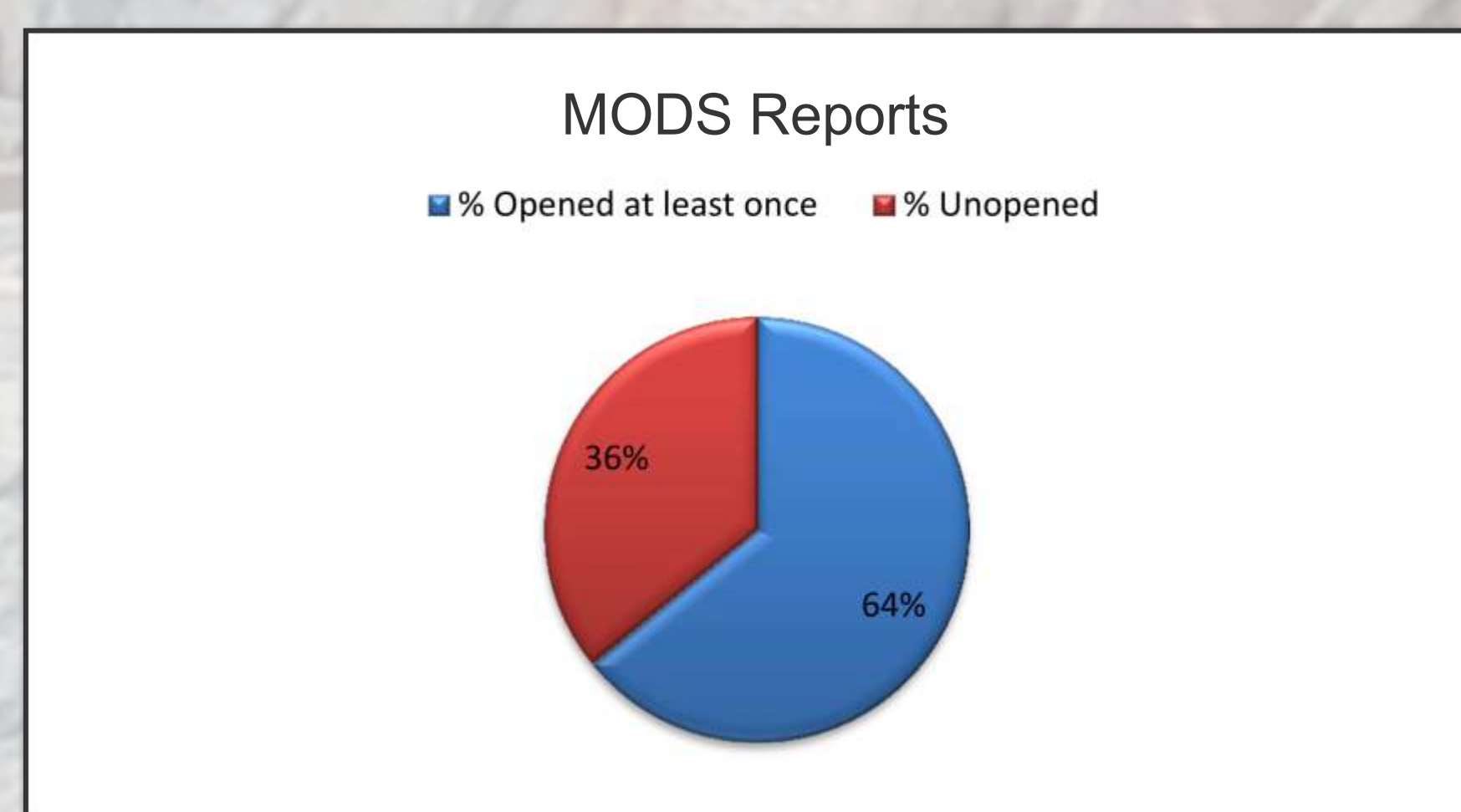


Figure 4

MODS user statistics

The 2016 web server statistics for the Mineral Inventory Database indicate that it was accessed 25 899 times (Figure 3), and during the past eleven years it has been consistently used averaging 26 186 hits per year. A hit is logged when the user opens a mineral inventory record. In 2013, 64% of the MODS records were opened at least once (Figure 4).