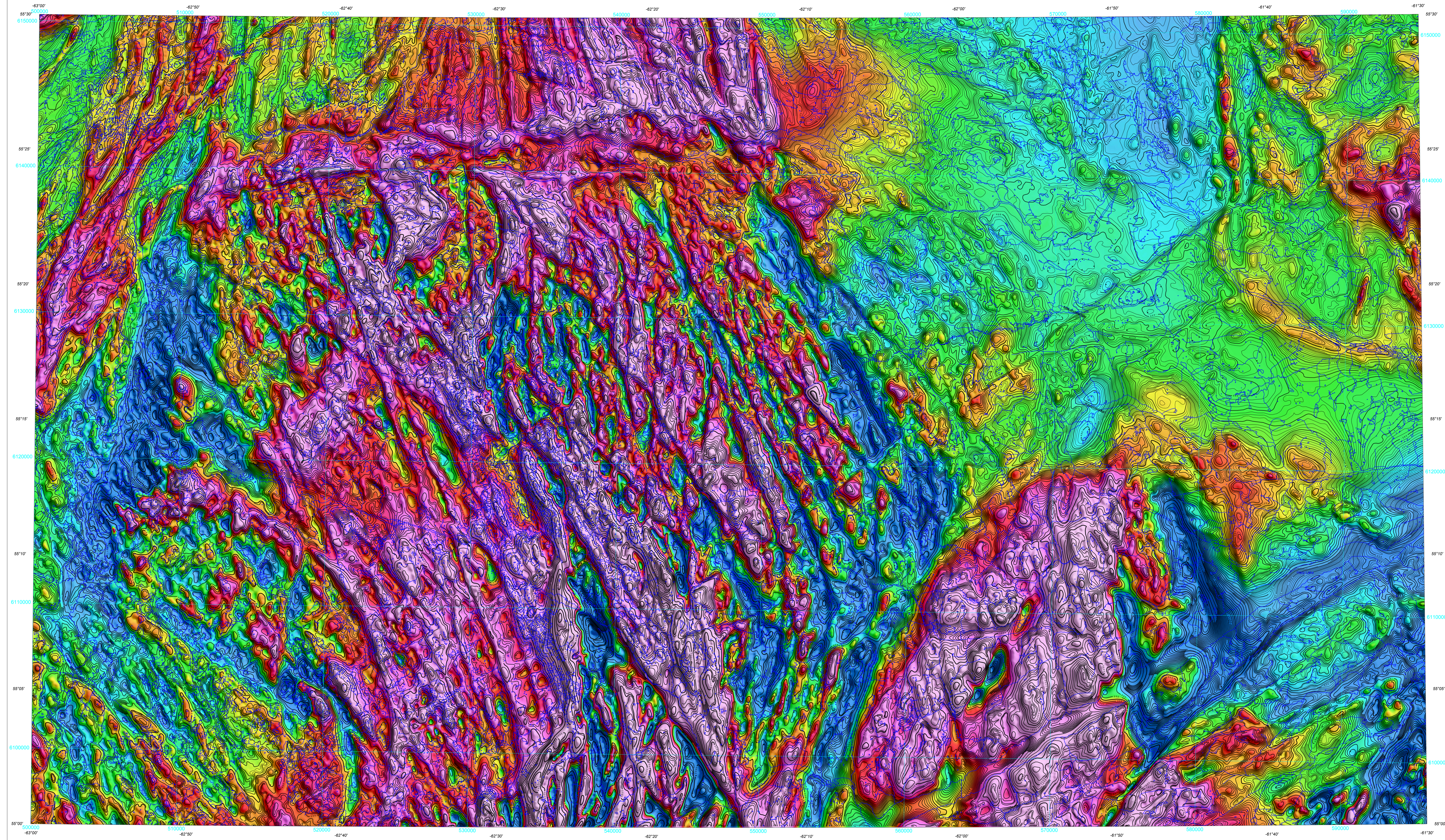


RESIDUAL TOTAL MAGNETIC FIELD



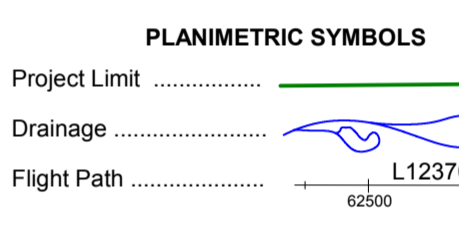
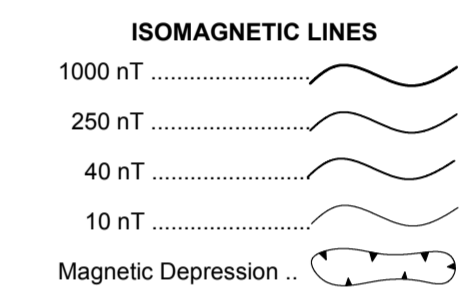
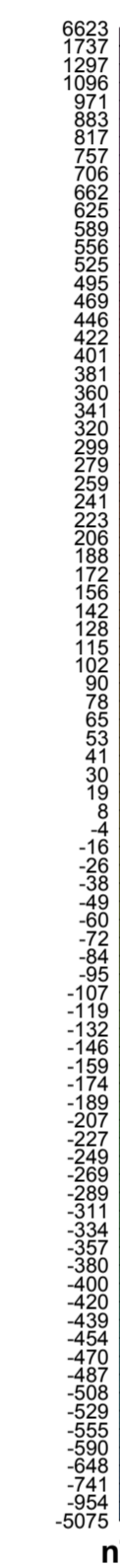
Residual Total Magnetic Field

This map of the residual total magnetic field was derived from data acquired during an aeromagnetic survey carried out in the Hopedale area, Labrador by EON Geosciences Inc. (EON), from January 15, 2018 to August 12, 2018 with two Piper Navajo aircraft (C-FEON and C-FION) and a Piper Cheyenne II aircraft (C-GFON). The data were recorded using 300-beam cesium vapor magnetometers (sensitivity = 0.005 nT) mounted in each of the tail booms of these aircraft. The nominal traverse and control line spacings were, respectively, 200 m and 3200 m, and the aircraft flew at a nominal terrain clearance of 300 m. Traverse lines were oriented N133°E with orthogonal control lines. The flight path was recovered following post-flight differential corrections to the raw Global Positioning System (GPS) data and inspection of ground images recorded by a vertically-mounted video camera. The survey was flown on a pre-determined flight surface to minimize differences in magnetic values at the intersections of control and traverse lines. These differences were computer-analysed to obtain a mutually levelled set of flight-line magnetic data. The levelled values were then interpolated to a 50 m grid. The International Geomagnetic Reference Field (IGRF) defined at the average GPS altitude of 490 m for the year 2018.329 was then removed. Removal of the IGRF, representing the magnetic field of the Earth's core, produces a residual component related almost entirely to magnetizations within the Earth's crust.

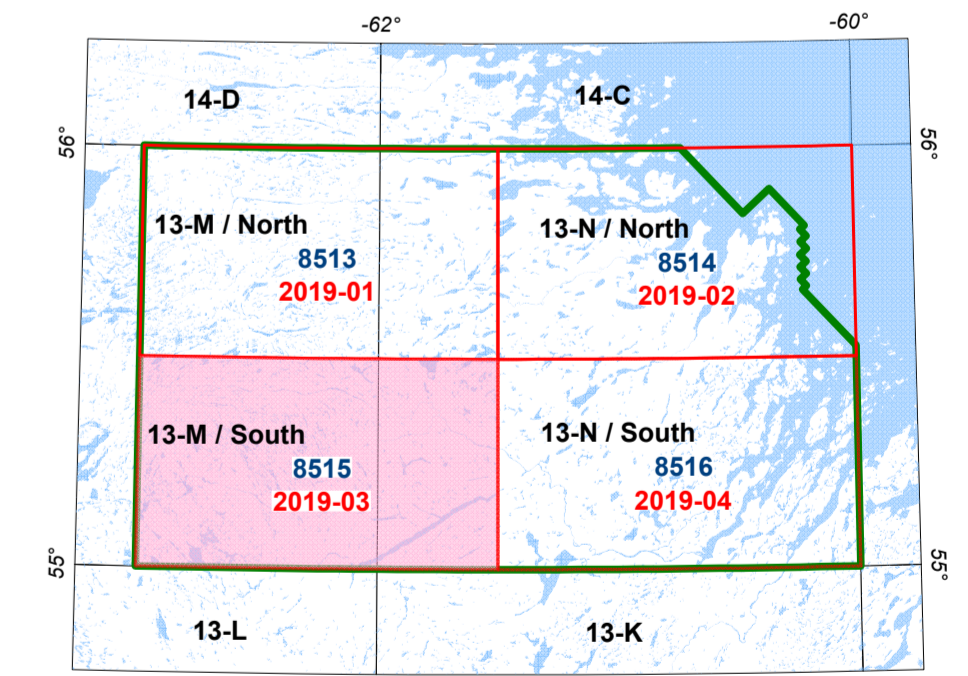
This publication is available for free download through GEOSCAN (<http://geoscan.nrcan.gc.ca/>). Corresponding digital profile and gridded data as well as similar data for adjacent airborne geophysical surveys are available from Natural Resources Canada's Geoscience Data Repository for Aeromagnetic Data at <http://datadepot.nrcan.gc.ca/collections/collection.do?collection=112370>. Digital products from this airborne survey are also available from the GSNL Geoscience Atlas at <https://geosites.gov.nl.ca/Default.htm>.

Acknowledgements

The field crew chiefs, Richard Bailey and Khorram Khan (EON), are thanked for their cooperation and their technical assistance during the start-up phase of this survey. We also thank Marc Richard (EON) for his cartographic design expertise.



NTS map sheets numbers in black
GSC Open File numbers in blue
GSNL Open File numbers in red



NATIONAL TOPOGRAPHIC SYSTEM REFERENCE AND GEOPHYSICAL MAP INDEX

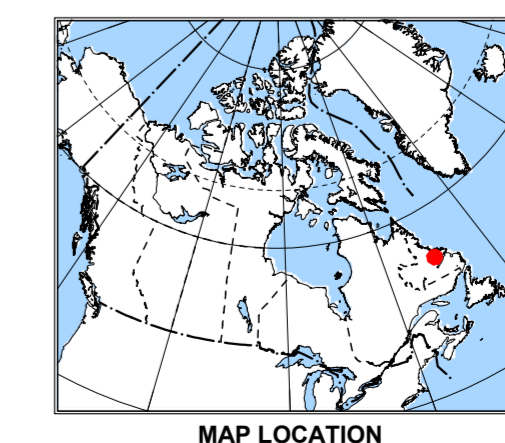
AEROMAGNETIC SURVEY OF THE HOPEDALE AREA

OPEN FILE DOSSIER PUBLIC 8515

GEOLOGICAL SURVEY OF CANADA / COMMISSION GÉOLOGIQUE DU CANADA 2019

Publications in this series have not been edited; they are submitted by the author.
Les publications de cette série ne sont pas révisées; elles sont soumises par l'auteur.

Newfoundland and Labrador Department of Natural Resources
Geological Survey Open File
LAB/1737, Map 2019-03



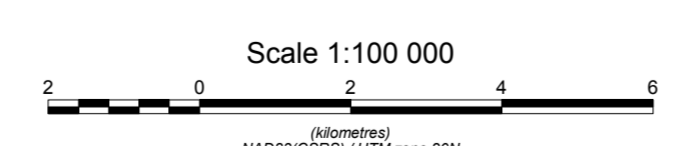
MAP LOCATION

Recommended citation
Coyle, M., 2019. Residual Total Magnetic Field, Aeromagnetic Survey of the Hopedale Area, Newfoundland and Labrador, Parts of NTS 13-M/South and 13-N/South, Geological Survey of Canada, Open File 8515, Newfoundland and Labrador Department of Natural Resources, Geological Survey Open File LAB/1737, Map 2019-03, Scale 1:100 000. <https://doi.org/10.4095/313287>

GEOLOGICAL SURVEY OF CANADA OPEN FILE 8515
NEWFOUNDLAND AND LABRADOR DEPARTMENT OF NATURAL RESOURCES, GEOLOGICAL SURVEY OPEN FILE LAB/1737, MAP 2019-03

RESIDUAL TOTAL MAGNETIC FIELD

AEROMAGNETIC SURVEY OF THE HOPEDALE AREA
NEWFOUNDLAND AND LABRADOR
PARTS OF NTS 13-M/SOUTH AND 13-N/SOUTH



Scale 1:100 000
Universal Transverse Mercator Projection
North American Datum 1983

© Her Majesty the Queen in Right of Canada, as represented by the Minister of Natural Resources, 2019
Base map at the scale of 1:50 000 from Natural Resources Canada, with modifications

Author: M. Coyle
Data acquisition and data compilation by EON Geosciences Inc., St-Laurent, Quebec.
Contract and project management by the Geological Survey of Canada, Ottawa, Ontario.
Digital cartography by M. Richard, EON Geosciences Inc.
Permanent link: <https://doi.org/10.4095/313287>

This aeromagnetic survey and the production of this map were funded by phase 2 of the Geo-Mapping for Energy and Minerals program (GEM-2) of the Lands and Minerals Sector, Natural Resources Canada.