

**RESIDUAL MAGNETIC FIELD**

**Harry's River Map Area**

(NTS 12B/09)

**MAP 2009-34**

**OPEN FILE NFLD/3058**

**G.J. Kilfoil and L.A. Cook**

**Residual Magnetic Field**

This map was derived from data acquired during an aeromagnetic survey carried out by Geo Data Solutions GDS Inc. The survey was flown during the period November 25, 2008 to March 30, 2009, using a Piper PA-31 Navajo aircraft, C-GKGA. The aircraft was equipped with three Geometrics cesium vapour magnetometers with a sensitivity of 0.005 nT, installed in the tail boom and wingtip pods. Total field data were sampled at 10 Hz. The nominal traverse and control-line spacings were, respectively, 200 m and 2000 m, and the aircraft flew at a nominal terrain clearance of 90 m. Traverse lines were oriented N50°W with orthogonal control lines. The flight path was recovered following post-flight differential corrections to the raw Global Positioning System data and inspection of ground images recorded by a vertically mounted video camera. The survey was flown on a pre-determined flight surface to minimize differences in magnetic values at the intersections of control and traverse lines. These differences were computer-analyzed to obtain a mutually levelled set of flight-line magnetic data. The levelled values were then interpolated to a 50 m grid.

The International Geomagnetic Reference Field (IGRF) defined at an altitude of 500 m for January 21<sup>st</sup> 2009 was then removed. Removal of the IGRF, representing the magnetic field of Earth's core, produces a residual component related essentially to magnetizations within the Earth's crust.

Digital versions of this map can be downloaded, at no charge, from the Newfoundland and Labrador Resource Atlas (<http://gis.gov.nl.ca/>), and from the Geological Survey of Newfoundland and Labrador On-Line Open File page: <http://www.nr.gov.nl.ca/mines&en/geo/survey/publications/openfiles/>. Corresponding digital profile and gridded data for this survey, as well as for airborne surveys flown over adjacent areas, are also available from the Newfoundland and Labrador Resource Atlas.

Printed copies of this map may be obtained from the Geoscience Publication and Information Section, Geological Survey, Department of Natural Resources, Government of Newfoundland and Labrador, P.O. Box 8700, St. John's, NL, Canada, A1B 4J6.

Department: <http://www.nr.gov.nl.ca/>  
Geological Survey: <http://www.nr.gov.nl.ca/mines&en/geo/survey/>  
E-mail: [pub@gov.nl.ca](mailto:pub@gov.nl.ca)

OPEN FILE NFLD/3058

PUBLISHED 2009

**Recommended Citation**

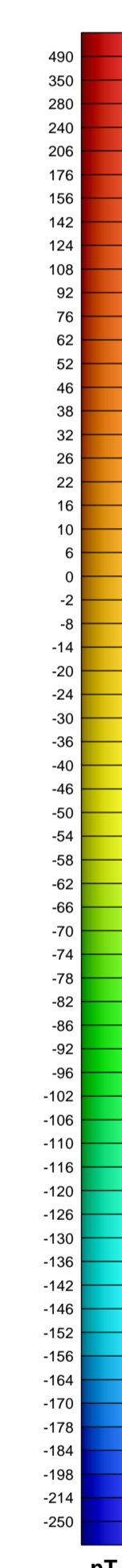
Kilfoil, G.J. and Cook, L.A.  
2009: Residual Magnetic Field, Harry's River Map Area (NTS 12B/09), Aeromagnetic Survey - Corner Brook Area. Geological Survey, Department of Natural Resources, Government of Newfoundland and Labrador, Map 2009-34, Open File NFLD/3058, scale 1:50 000.

Maps released as part of Open File NFLD/3058 are (refer to index map below):

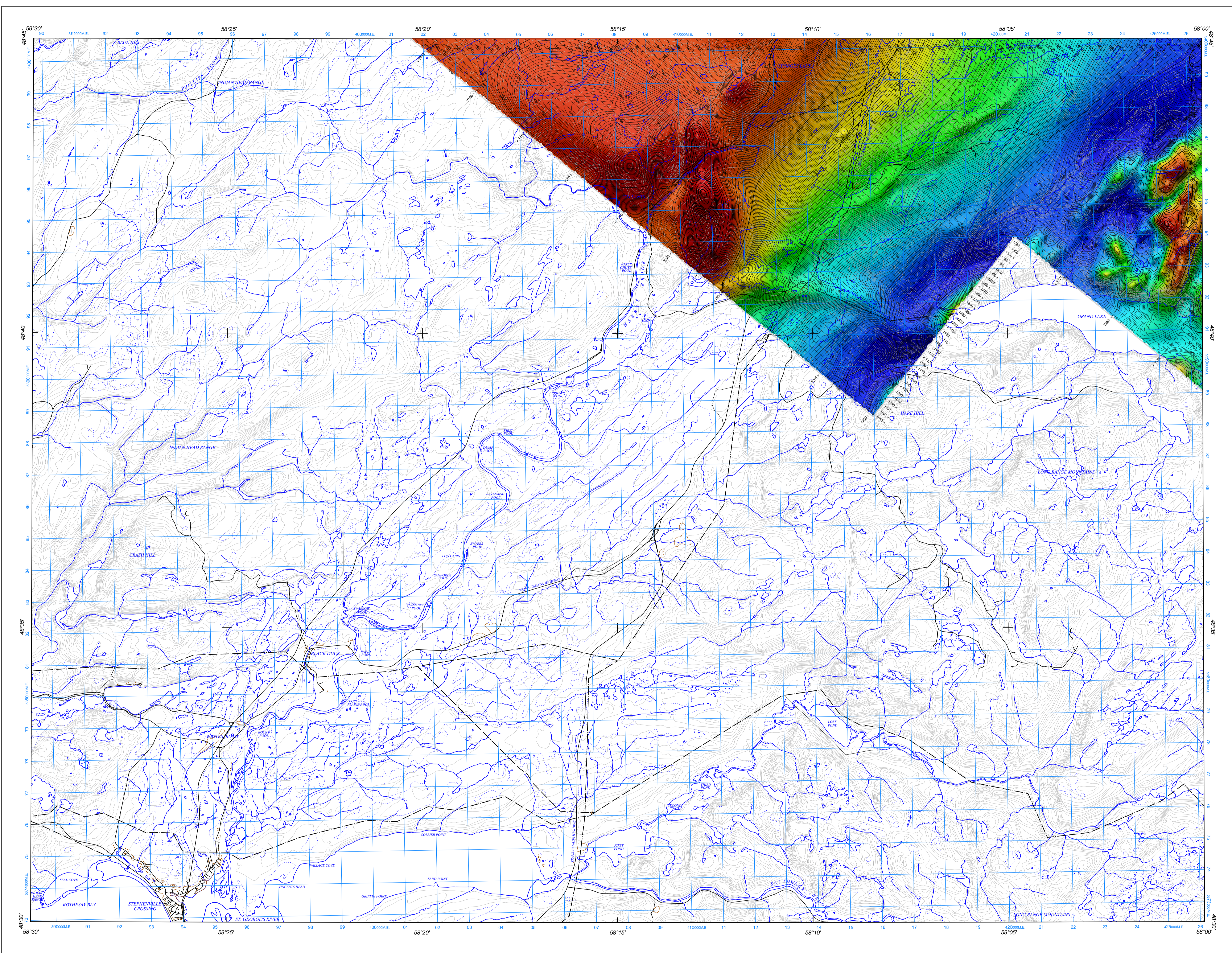
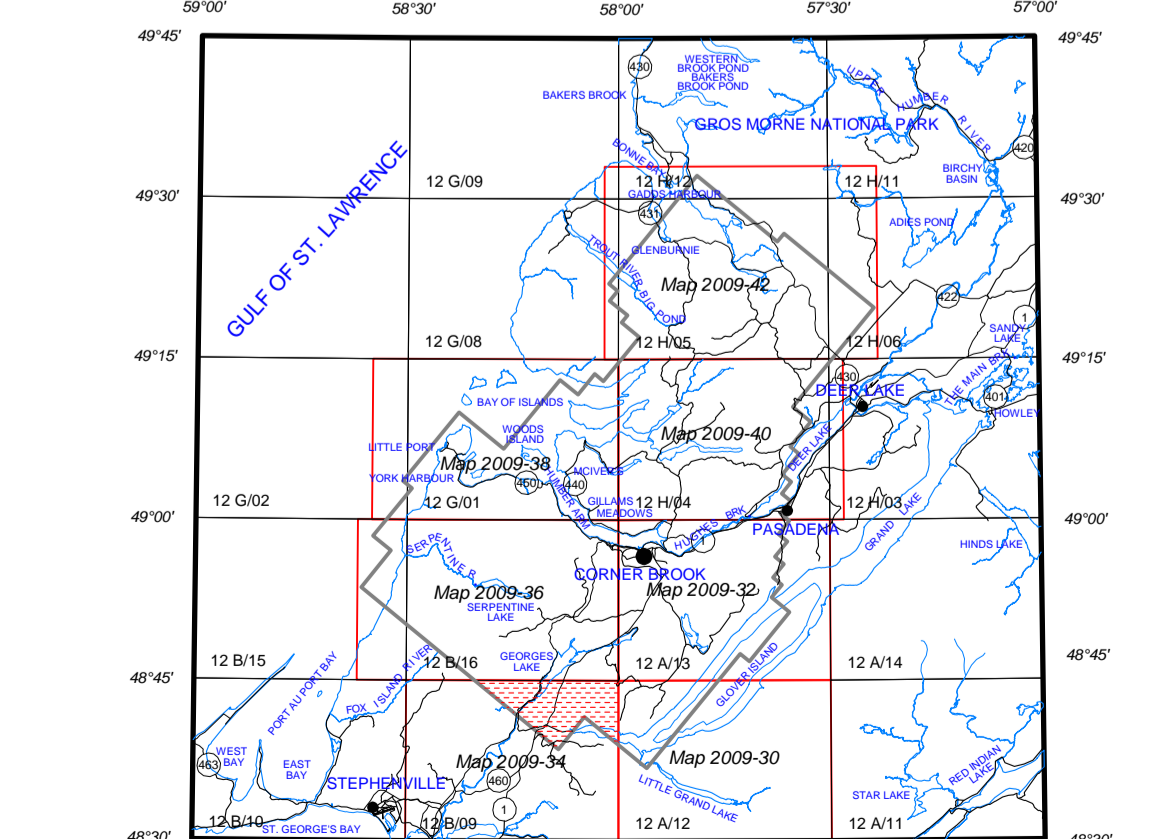
Map Area (NTS)	Residual Magnetic Field	First Vertical Derivative of the Resid. Mag. Field
Little Grand Lake (12A/12)	Map 2009-30	Map 2009-31
Corner Brook (12A/13)	Map 2009-32	Map 2009-33
Harry's River (12B/09)	Map 2009-34	Map 2009-35
Serpentine (12B/16)	Map 2009-36	Map 2009-37
Bay of Islands (12C/01)	Map 2009-38	Map 2009-39
Pasadena (12H/04)	Map 2009-40	Map 2009-41
Lomond (12H/05)	Map 2009-42	Map 2009-43

**Note**  
Open File reports and maps issued by the Geological Survey Division of the Newfoundland and Labrador Department of Natural Resources are made available for public use without being formally edited or peer reviewed. They are based upon preliminary data and evaluation. The purchaser agrees not to provide a digital reproduction or copy of this product to a third party. Derivative products should acknowledge the source of the data.

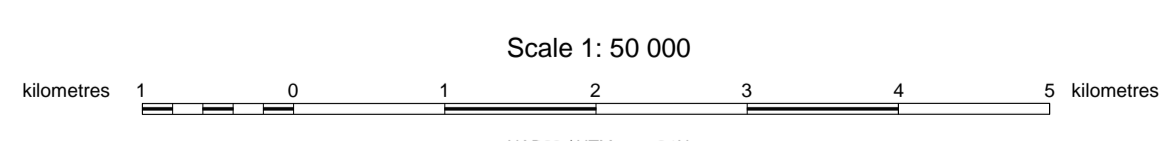
**Disclaimer**  
The Geological Survey, a division of the Department of Natural Resources (the "authors and publishers"), retains the sole right to the original data and information found in any product produced. The authors and publishers assume no legal liability or responsibility for any alterations, changes or misrepresentations made by third parties with respect to these products or the original data. Furthermore, the Geological Survey assumes no liability with respect to digital reproductions or copies of original products or for derivative products made by third parties. Please consult with the Geological Survey in order to ensure originality and correctness of data and/or products.



ISOMAGNETIC LINES	PLANIMETRIC SYMBOLS
250 nT	Topographic Contour
50 nT	Power Line
10 nT	Drainage
2 nT	Road
Magnetic Low	Flight Line



**MAP 2009-34**  
**HARRY'S RIVER - NTS 12B/09**



Scale 1:50 000  
NAD83 / UTM zone 21N  
Digital Topographic Data provided by Geomatics Canada, Natural Resources Canada

Compilation and map production by  
Geo Data Solutions GDS Inc., Laval, Quebec.  
Contract and project management by the  
Newfoundland and Labrador Department of Natural Resources.