

**RESIDUAL MAGNETIC FIELD  
Port Saunders Map Area**

12/11

MAP 2009-83  
OPEN FILE NFLD/3076

L.A. Cook and G.J. Kilfoil

**Residual Magnetic Field**

This map was derived from data acquired during an aeromagnetic survey carried out by NOVATEM Inc. The survey was flown during the period October 1<sup>st</sup>, 2008 to May 16<sup>th</sup>, 2009, using a Cessna-185 aircraft C-FARU. The aircraft was equipped with two Geometrics cesium vapour magnetometers with a sensitivity of 0.005 nT, installed in wing pods. Total field data were sampled at 10 Hz. The nominal traverse and control-line spacing were, respectively, 200 m and 2000 m, and the aircraft flew at a nominal terrain clearance of 30 m. Traverse lines were oriented N75W with orthogonal control lines. The flight path was recovered following post-flight differential corrections to the raw Global Positioning System data and inspection of ground images recorded by a vertically mounted video camera. The survey was flown on a pre-determined flight surface to minimize differences in magnetic values at the intersections of control and traverse lines. These differences were computer-analyzed to obtain a mutually levelled set of flight-line magnetic data. The levelled values were then interpolated to a 50 m grid.

The International Geomagnetic Reference Field (IGRF) defined at the precise position of the aircraft and for the respective date of flight was then removed. Removal of the IGRF, representing the magnetic field of Earth's core, produces a residual component related essentially to magnetizations within the Earth's crust.

Digital versions of this map can be downloaded, at no charge, from the Newfoundland and Labrador Resource Atlas (<http://gis.geosurv.gov.nl.ca/>), and from the Geological Survey of Newfoundland and Labrador On-Line Open File page: <http://www.nr.gov.nl.ca/mines&energy/publications/openfiles/>.

Corresponding digital profile and gridded data for this survey, as well as for airborne surveys flown over adjacent areas, are also available from the Newfoundland and Labrador Resource Atlas.

Nalcor: <http://www.nalcorenergy.com/>  
Department of Natural Resources: <http://www.nr.gov.nl.ca/nr/>  
Energy Branch: <http://www.nr.gov.nl.ca/mines&energy/>  
Geological Survey: <http://www.nr.gov.nl.ca/mines&energy/geosurvey/>  
E-mail: [pub@nr.gov.nl.ca](mailto:pub@nr.gov.nl.ca)

OPEN FILE NFLD/3076

PUBLISHED 2009

**Recommended Citation**

Cook, L.A. and Kilfoil, G.J.  
2009: Aeromagnetic survey - Gros Morne to Port au Choix area. Government of Newfoundland and Labrador, Department of Natural Resources, Geological Survey, Open File NFLD/3076, (Residual magnetic field, NTS area 12/11, Map 2009-83, scale 1:50 000).

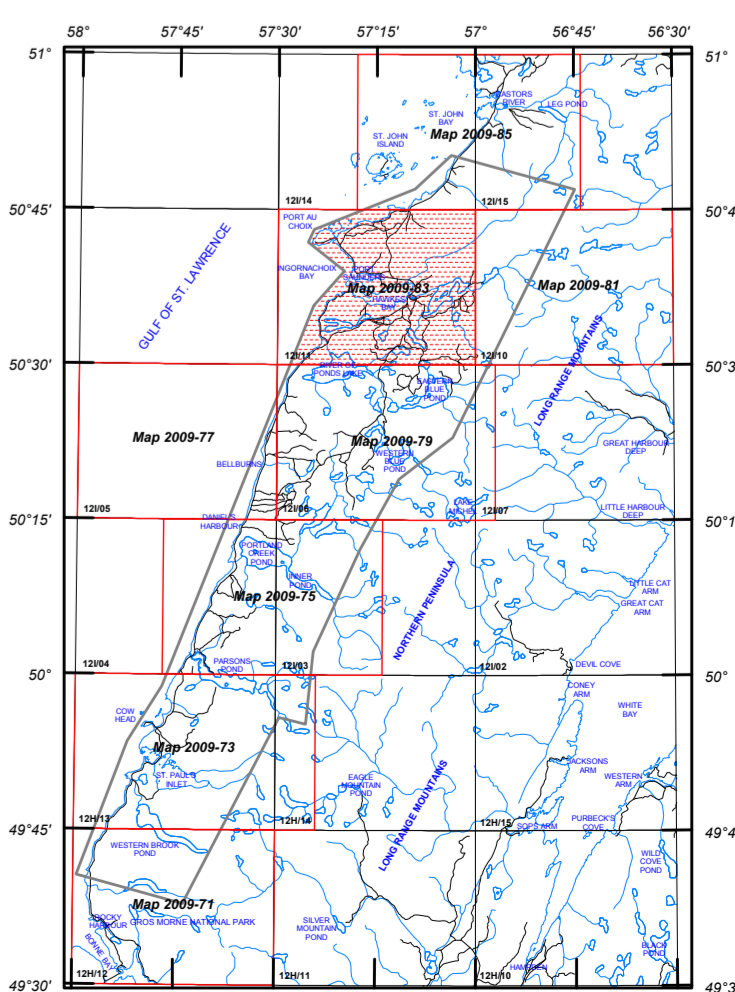
Maps released as part of Open File NFLD/3076 are (refer to index map below):

Map Area (NTS)	Residual Magnetic Field	First Vertical Derivative of the Resid. Mag. Field
Gros Morne (12H/12)	Map 2009-71	Map 2009-72
St. Paul's Inlet (12H/13)	Map 2009-73	Map 2009-74
Indian Lookout - Portland Creek (12J/3 east, 12J/4 west)	Map 2009-75	Map 2009-76
Bellburns (12I/05)	Map 2009-77	Map 2009-78
Bellburns (12I/06)	Map 2009-79	Map 2009-80
Torrent River (12J/10)	Map 2009-81	Map 2009-82
Port Saunders (12I/11)	Map 2009-83	Map 2009-84
St. John Island - Castors River (12I/14 east, 12I/15 west)	Map 2009-85	Map 2009-86

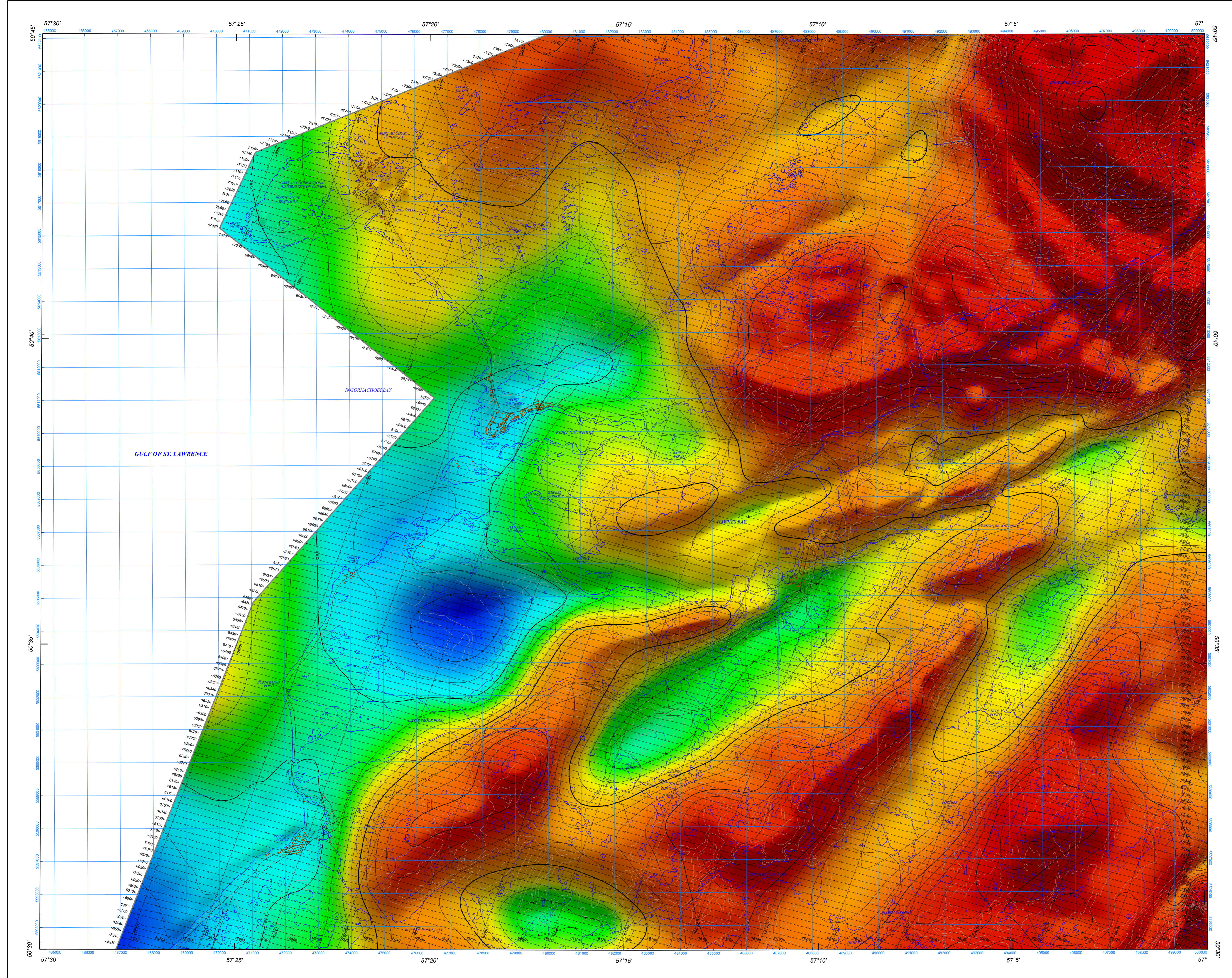
**Note**  
Open File reports and maps issued by the Petroleum Geoscience and the Geological Survey divisions of the Newfoundland and Labrador Department of Natural Resources, are made available for public use without being formally edited or peer reviewed. They are based upon preliminary data and evaluation. The purchaser agrees not to provide a digital reproduction or copy of this product to a third party. Derivative products should acknowledge the source of the data.

**Disclaimer**  
The Petroleum Geoscience and the Geological Survey divisions of the Department of Natural Resources (the "authors and publishers"), retain the right to the original data and information found in any product. The authors and publishers assume no legal liability or responsibility for any alterations, changes or misrepresentations made by third parties with respect to these products or the original data. Furthermore, the Petroleum Geoscience and Geological Survey divisions assume no liability with respect to digital reproductions or copies of original products or for derivative products made by third parties. Please consult with the Petroleum Geoscience and/or the Geological Survey divisions to ensure originality and correctness of data and/or products.

ISOMAGNETIC LINES	PLANIMETRIC SYMBOLS
250 nT	Topographic Contour
50 nT	Power Line
10 nT	Drainage
2 nT	Road
Magnetic Low	Flight Line

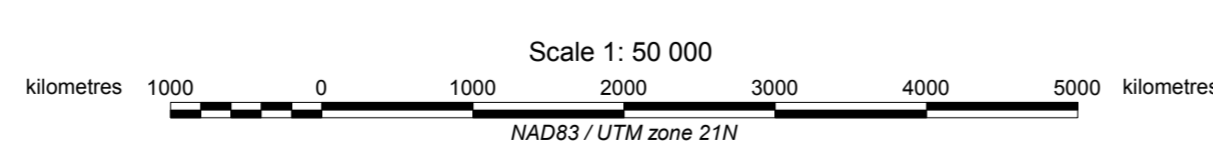


NATIONAL TOPOGRAPHICAL SYSTEM REFERENCE AND GEOPHYSICAL MAP INDEX  
**AEROMAGNETIC SURVEY - GROS MORNE TO PORT AU CHOIX AREA**

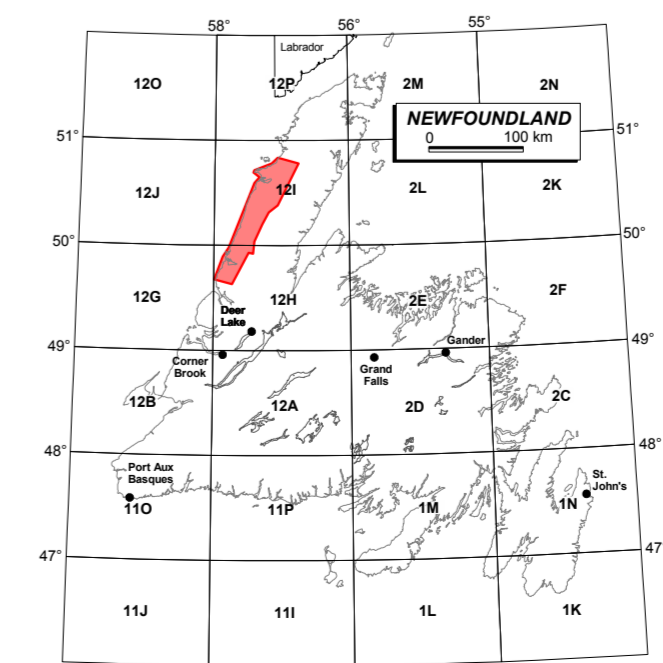


Compilation and map production by  
Novatem Inc., Mont-St-Hilaire, Quebec.  
Contract and project management by the  
Newfoundland and Labrador Department of Natural Resources.  
Funding for the aeromagnetic program was provided by  
Nalcor and the Newfoundland and Labrador  
Department of Natural Resources Energy Branch, through the  
Petroleum Exploration Enhancement Program (PEEP).

**MAP 2009-83  
PORT SAUNDERS - NTS 12/11**



© 2009 Topographic Data provided by Geomatics Canada, Natural Resources Canada



INDEX MAP