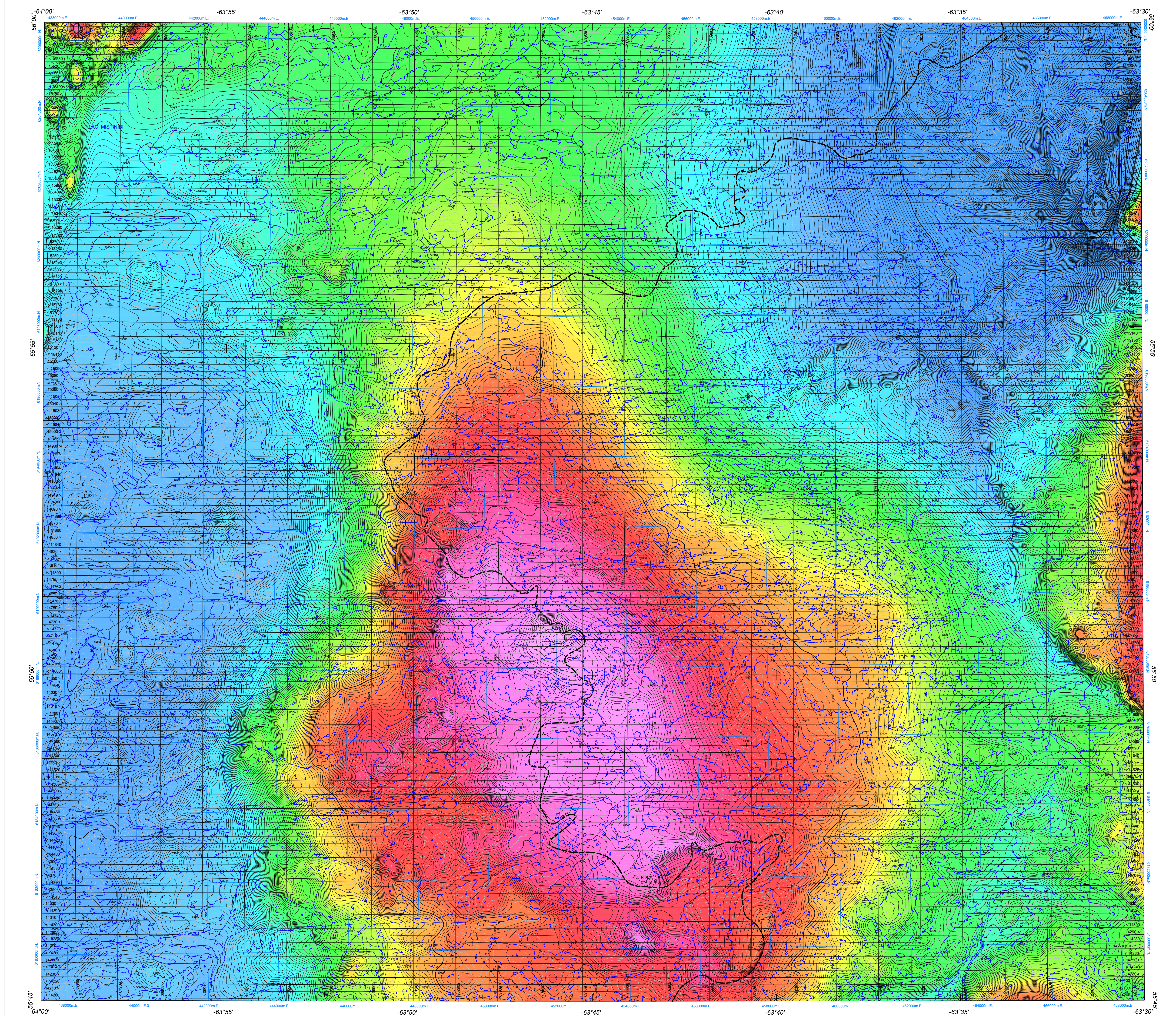


COMPOSANTE RÉSIDUELLE DU CHAMP MAGNÉTIQUE TOTAL

RESIDUAL TOTAL MAGNETIC FIELD



Composante résiduelle du champ magnétique total

This map of the residual total magnetic field was compiled from data acquired during an aeromagnetic survey carried out by Geo Data Solutions GDS Inc. and Oracle Geospatial International during the period from February 16 to April 16, 2012. The data were recorded using a split-beam cesium vapour magnetometer (sensitivity = 0.005 nT) mounted in the tail boom of each of three Piper Navajo aircraft. The nominal traverse and control line spacing were respectively 200 m and 1 200 m, and the aircraft flew at a nominal terrain clearance of 80 m. Traverse lines were oriented E-W with orthogonal control lines. The flight path was recovered following post-flight differential corrections to the raw Global Positioning System data and inspection of ground images recorded by a vertically-mounted video camera. The survey was flown on a pre-determined flight surface to minimize differences in magnetic values at the intersections of control and traverse lines. These differences were computed and analysed to obtain a mutually levelled set of flight-line magnetic data. The levelled values were then interpolated to a 50 m grid. The International Geomagnetic Reference Field (IGRF) defined at an altitude of 615 m for the year 2012.02 was then removed. Removal of the IGRF, representing the magnetic field of the Earth's core, produces a residual component related essentially to the magnetizations within the Earth's crust.

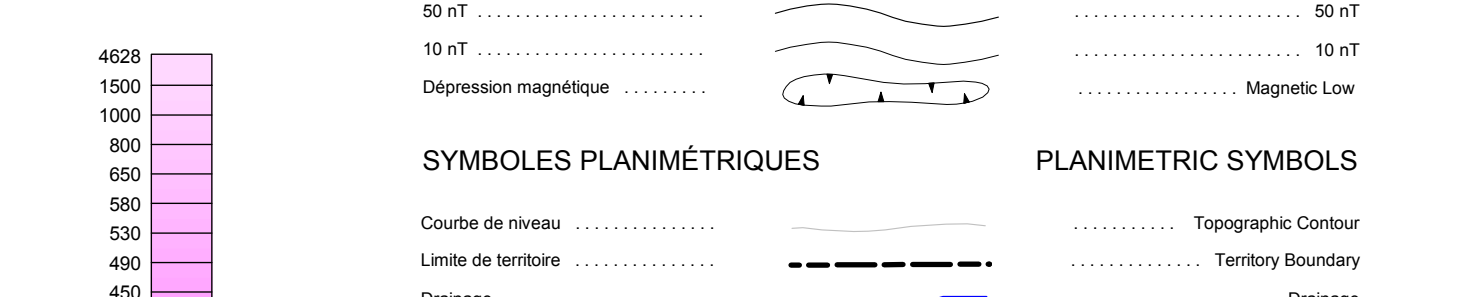
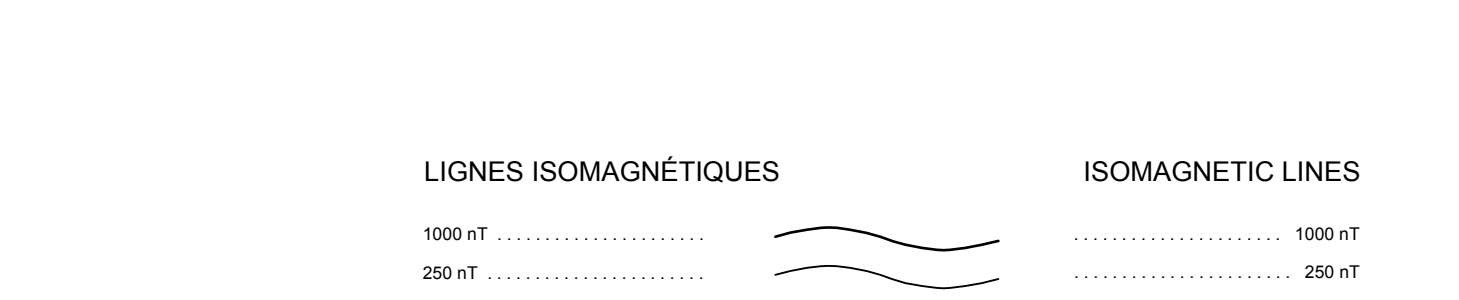
Digital versions of this map can be downloaded, at no charge, from Natural Resources Canada's Geoscience Data Repository (MIRAGE) at <http://gdr.nrcan.gc.ca/mirage>. Corresponding digital profile and gridded data as well as similar data for adjacent airborne geophysical surveys are available from Natural Resources Canada's Geoscience Data Repository for Aeromagnetic data at <http://gdr.nrcan.gc.ca/aeromag/>. The same products are also available, for a fee, from the Geospatial Data Centre, Geological Survey of Canada, 615 Booth Street, Ottawa, Ontario K1A 0G9. Telephone: (613) 995-5325, email: info@gsd.nrcan.gc.ca

This map and the corresponding digital geophysical data may also be obtained from the Ministère des Ressources naturelles et de la Faune du Québec Web site's "Online Products and Services" page at <http://www.mrfm.gouv.qc.ca/en/ajouts/produits-services/mrfm/>.

A digital version of this map can also be downloaded, at no charge, from the Web site of the Department of Natural Resources, Newfoundland and Labrador, either on its Open File page at <http://www.gov.nl.ca/naturalresources/openfile/openfile.html> or on its Geoscience Online page at <http://www.gso.gov.nl.ca/>

On peut télécharger gratuitement une version numérique de cette carte à partir du site Web du ministère des Ressources naturelles et de la Faune du Québec, à l'adresse <http://www.mrfm.gouv.qc.ca/en/ajouts/produits-services/mrfm/>.

On peut télécharger gratuitement une version numérique de cette carte à partir du site Web du ministère des Ressources naturelles et de la Faune du Québec, à l'adresse <http://www.gov.nl.ca/naturalresources/openfile/openfile.html> ou à la page de Geoscience Online (<http://www.gso.gov.nl.ca/>)



Équidistance des courbes topographiques : 10 mètres / Topographic Contour Interval: 10 metres

DOSSIER PUBLIC 7158 DE LA CGC / GSC OPEN FILE 7158
MINISTÈRE DES RESSOURCES NATURELLES ET DE LA FAUNE DU QUÉBEC, DP 2012-05 C007
NEWFOUNDLAND AND LABRADOR DEPARTMENT OF NATURAL RESOURCES, GEOLOGICAL SURVEY OPEN FILE 013M/13/0099

LEVÉ AÉROMAGNÉTIQUE DE LA RÉGION DU BATHOLITE DE MISTASTIN
AEROMAGNETIC SURVEY MISTASTIN BATHOLITH

Auteurs : R. Dumont et A. Jones
Acquisition et compilation des données et production de cartes par Geo Data Solutions GDS Inc., Laval (Québec)
Gestion et supervision du projet par la Commission géologique du Canada, Ottawa (Ontario)

Auteurs : R. Dumont and A. Jones
Data acquisition and compilation and map production by Geo Data Solutions GDS Inc., Laval, Quebec
Contract and project management by the Geological Survey of Canada, Ottawa, Ontario

COMPOSANTE RÉSIDUELLE DU CHAMP MAGNÉTIQUE TOTAL
RESIDUAL TOTAL MAGNETIC FIELD

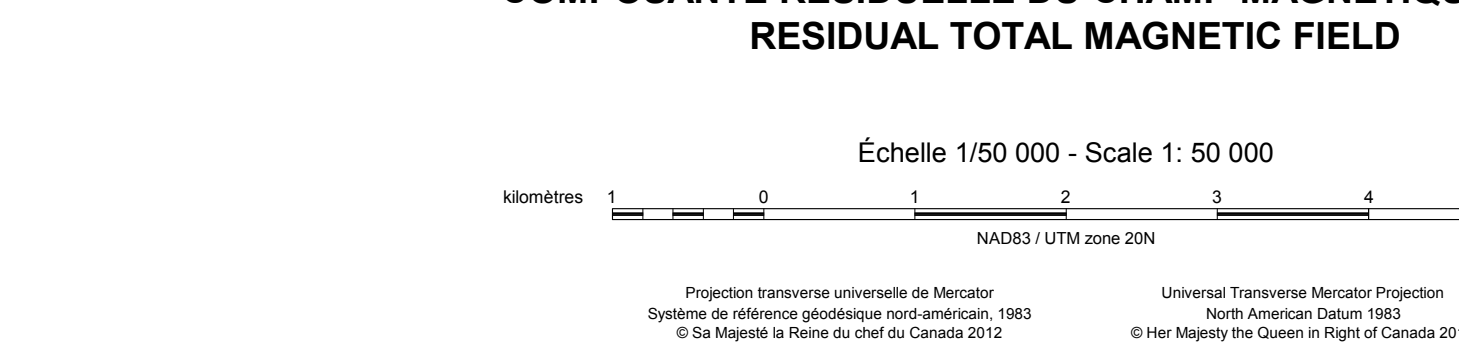
Échelle 1/50 000 - Scale 1:50 000

Projection transversale universelle de Mercator / Universal Transverse Mercator Projection
Système de référence géodésique nord-américain, 1983 / North American Datum 1983
© Sa Majesté la Reine du Chef du Canada 2012 / © Her Majesty the Queen in Right of Canada 2012

Données topographiques numériques de Géomatique Canada, Ressources naturelles Canada
Digital Topographic Data provided by Geomatics Canada, Natural Resources Canada

Ce levé aéromagnétique et la production de cette carte ont été financés conjointement par le programme « Géomatique et production de cartes » du programme « Géomatique et production de cartes » de l'Initiative géoscientifique ciblée (IGC-4), qui sont des programmes du Secteur des sciences de la Terre, Ressources naturelles Canada.

This aeromagnetic survey and the production of this map were jointly funded by the Geo-mapping for Energy and Minerals (GEM) program and the fourth phase of the Targeted Geoscience Initiative (IGC-4), which are programs of the Earth Sciences Sector, Natural Resources Canada.



SOMMAIRE DES FEUILLETS / MAP SHEET SUMMARY

Feuille / Sheet

CARTE / MAP

- Composante résiduelle du champ magnétique total / Residual Total Magnetic Field
- Dérivée première verticale du champ magnétique / First Vertical Derivative of the Magnetic Field

Recommended citation:
Dumont, R. and Jones, A., 2012. Mistastin Batholith Aeromagnetic Survey, NTS 13 M/13, Québec and Newfoundland and Labrador; Geological Survey of Canada, Open File 7158; Ministère des Ressources naturelles et de la Faune du Québec, DP 2012-05 C007; Newfoundland and Labrador Department of Natural Resources, Geological Survey, Open File 013M/13/0099, échelle 1/50 000.