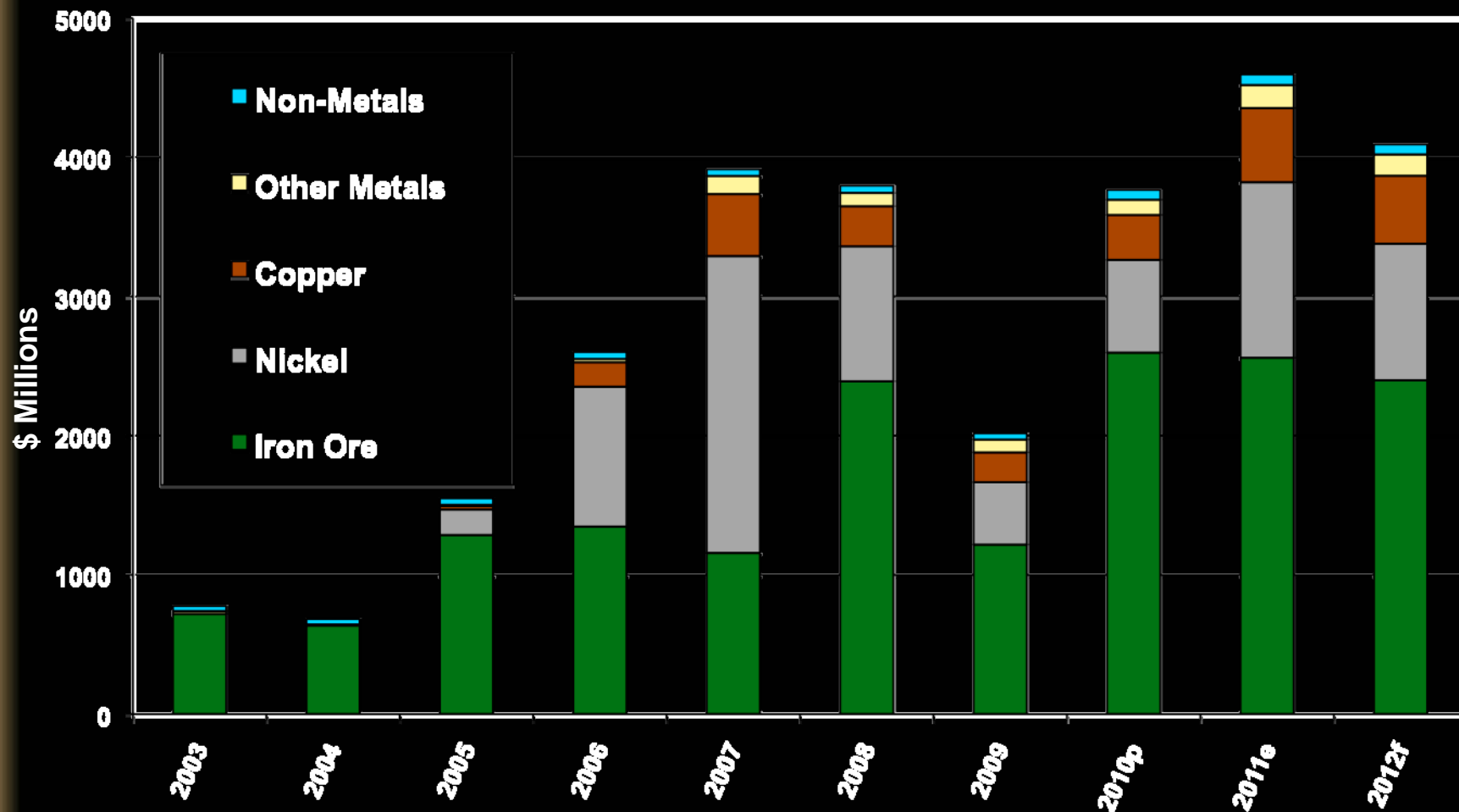


# Newfoundland & Labrador Minerals Sector Overview 2012

*Charles Bown, Natural Resources*

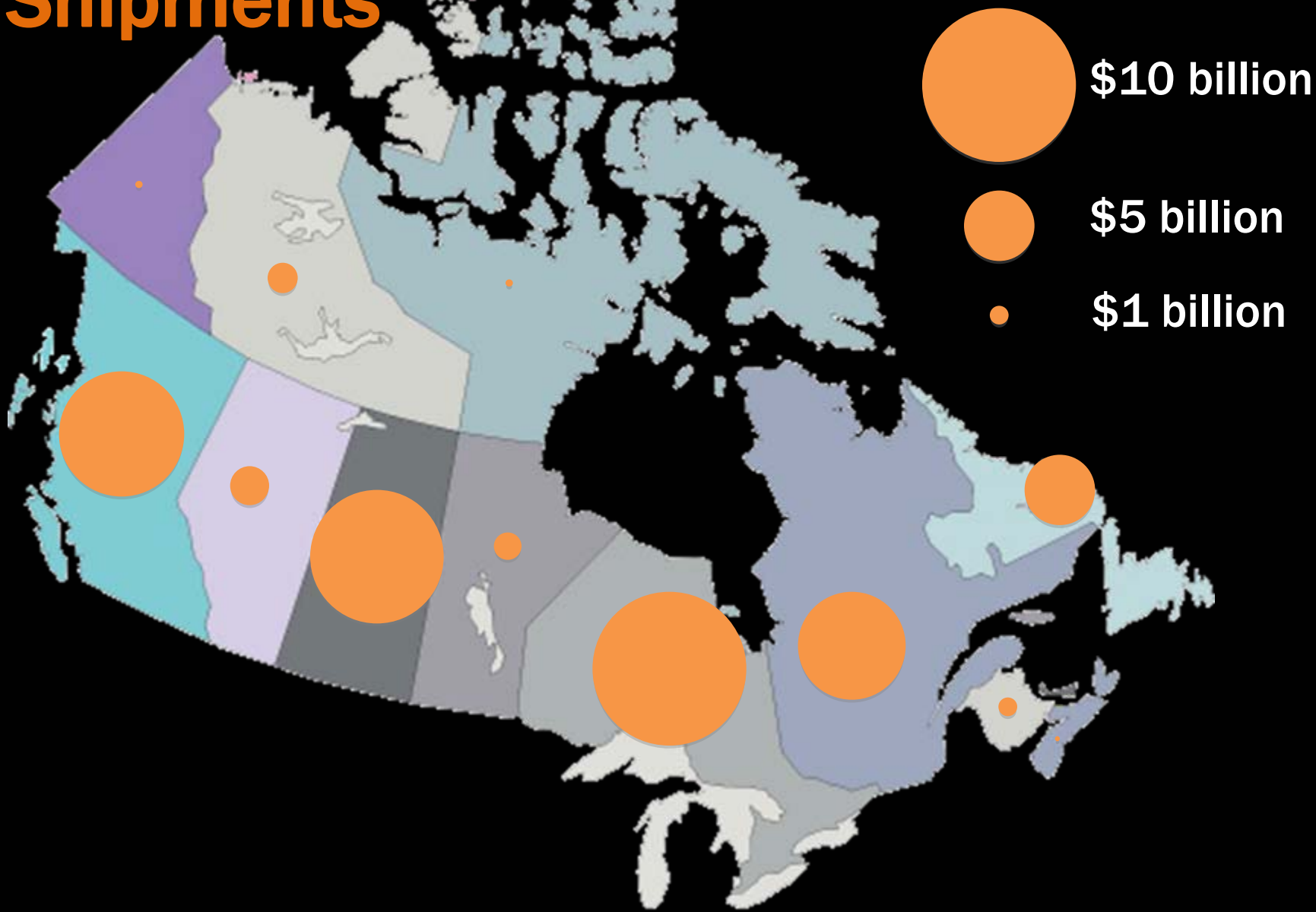
# Mineral Shipments



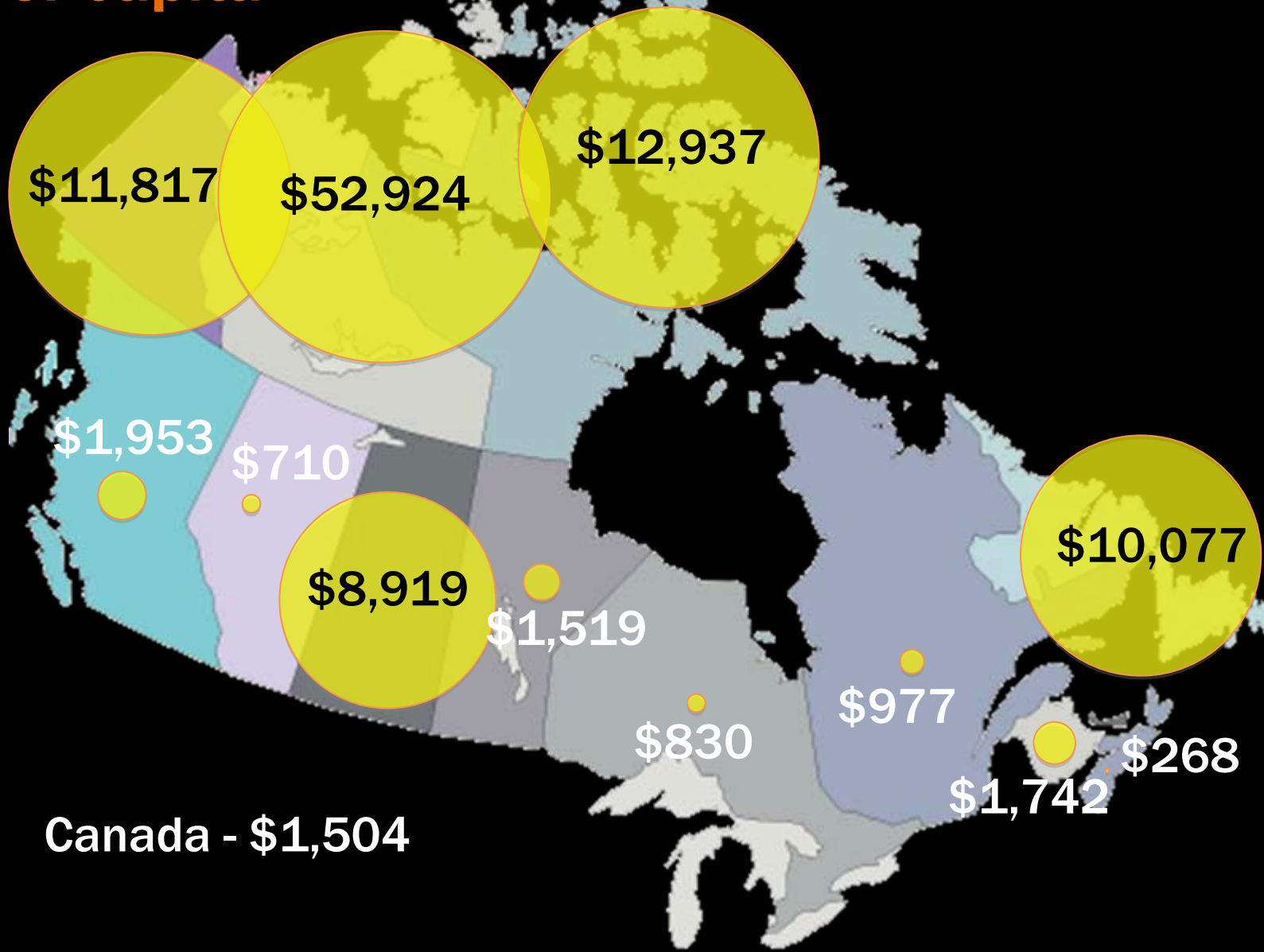
Sources: Department of Natural Resources and NRCan

p: Preliminary; e: Estimate; f: Forecast

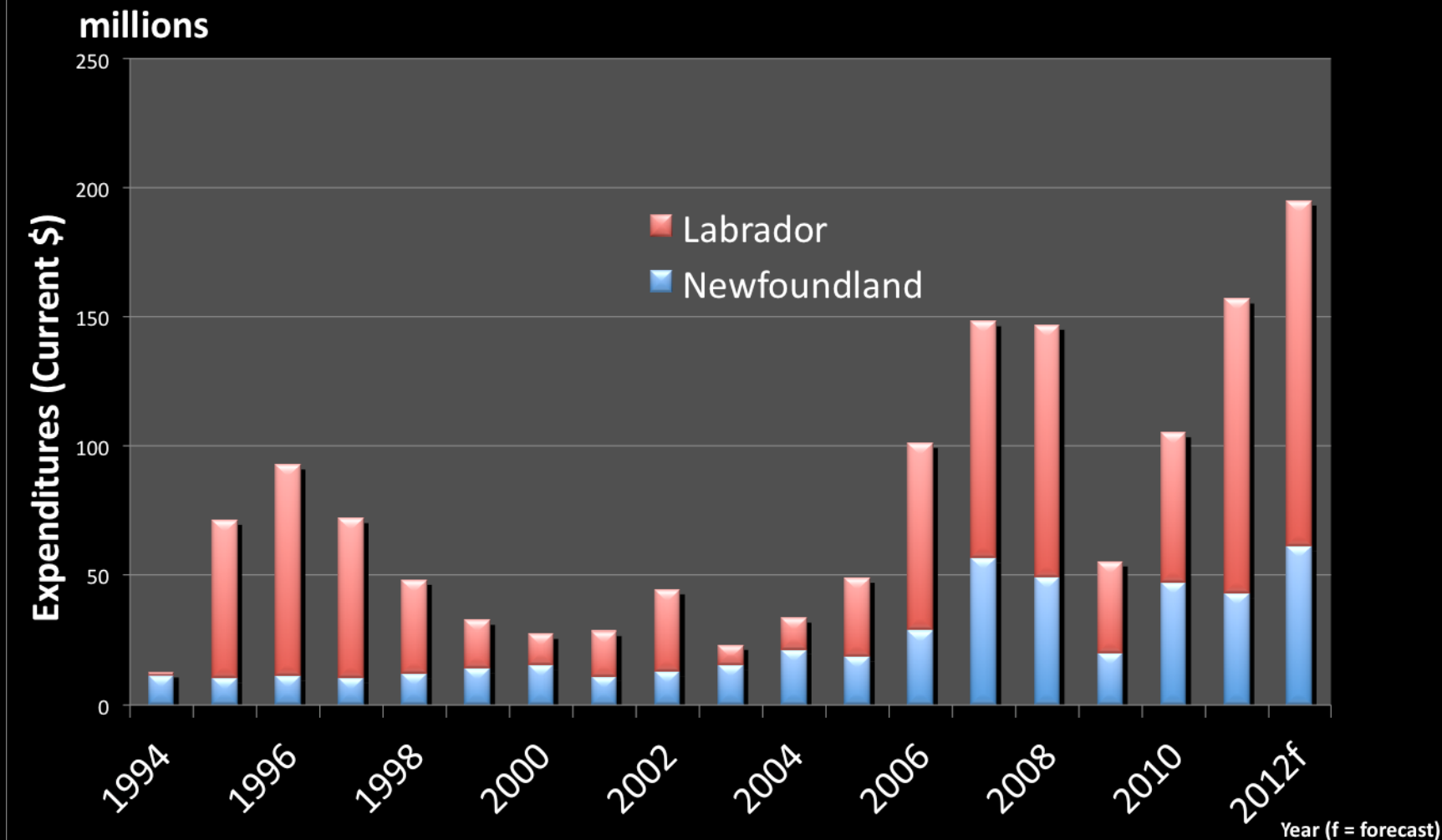
# Mineral Shipments



# Mineral Shipments – per capita

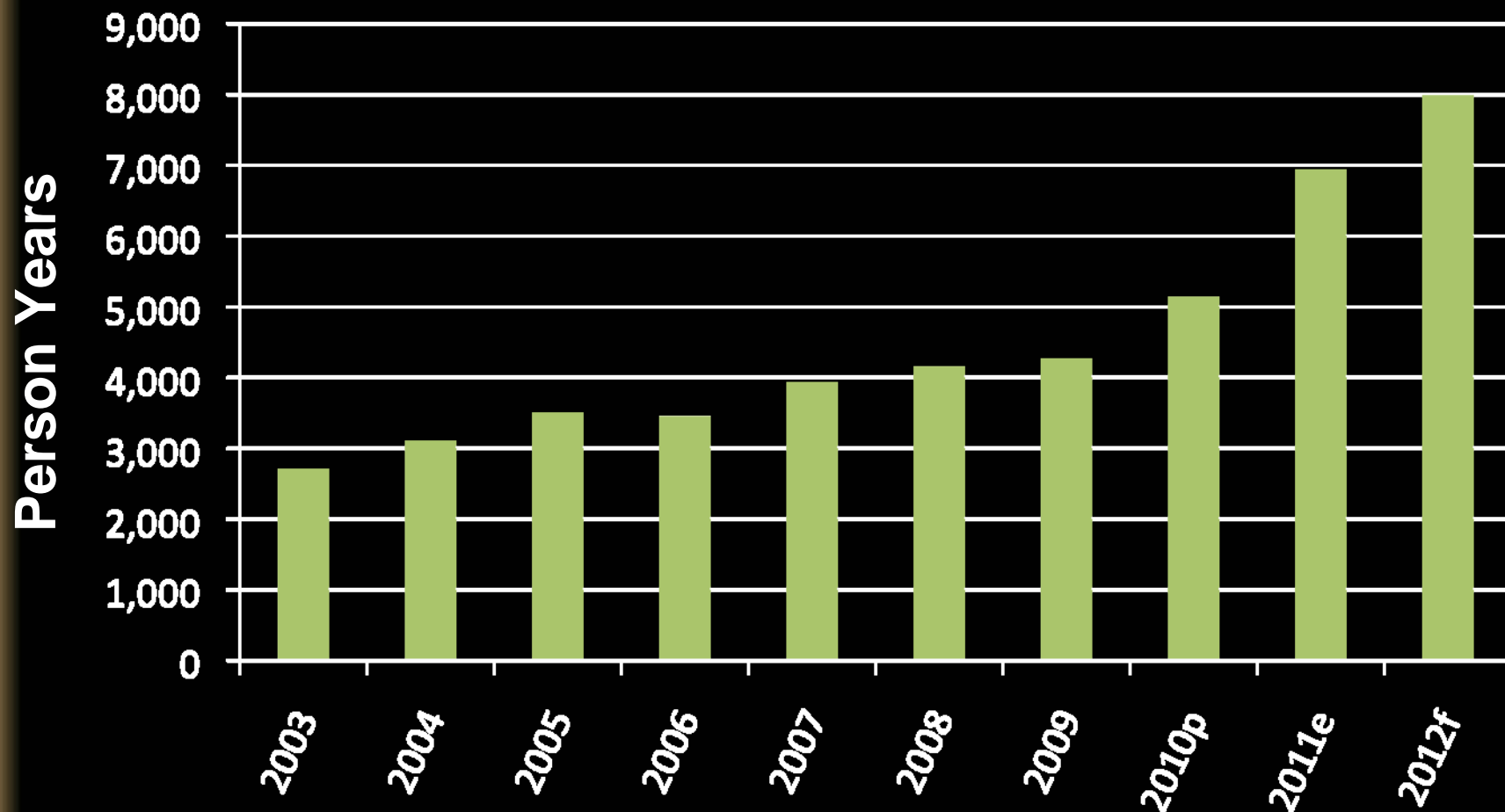






## Mineral Exploration

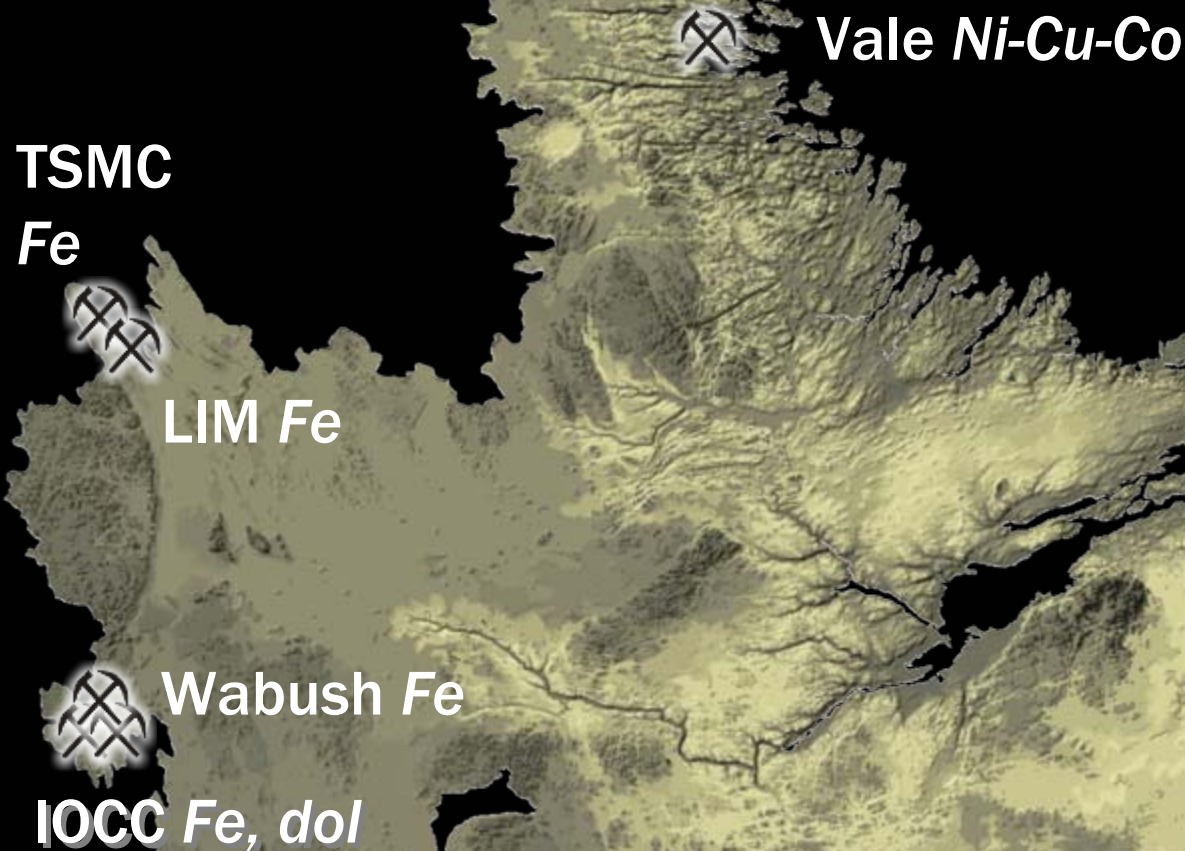
# Employment



Sources: Department of Natural Resources and NRCan

p: Preliminary; e: Estimate; f: Forecast

# Labrador mines





# Iron Ore Company of Canada - Rio Tinto

**Current – 18 mta**

**CEP Expansion**

**- 23 mta with CEP I, II**

**- 26 mta CEP-III – 2016?**

**- 50 mta ?**





# **Scully Mine, Wabush Mines – Cliffs**

**3-5 mta**

**Implementing Mn  
reduction – 2 lines in  
place**





# Labrador Iron Mines



**2011: First new iron ore mine in Labrador in 50 years**

**2012: In production (2 mta), expansion to new ore bodies**



# Tata Steel Minerals Canada

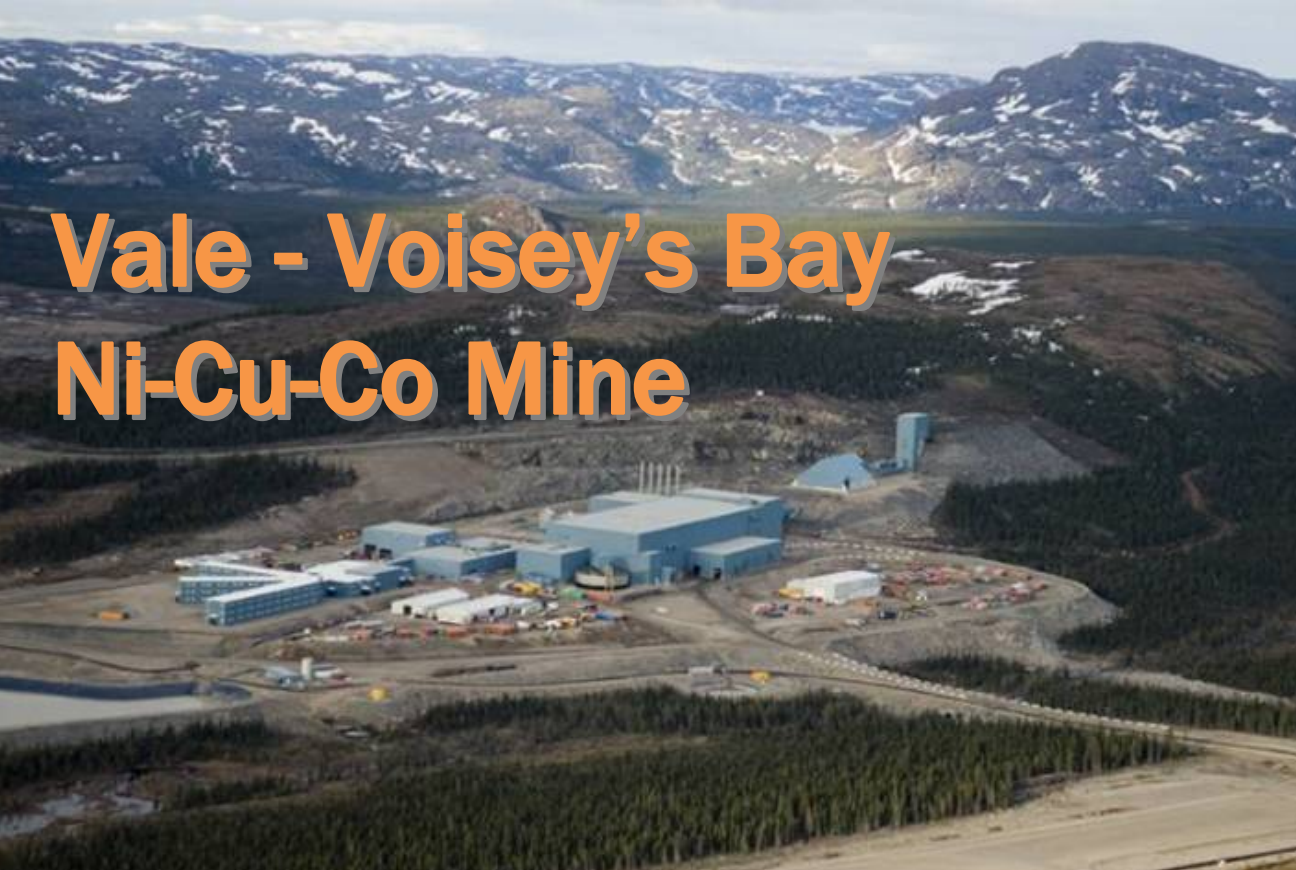


In production summer  
2012





# Vale - Voisey's Bay Ni-Cu-Co Mine



## Long Harbour processing plant – 2013 opening







March 2011

September 2012





# Newfoundland mines

Newfoundland  
Labrador  
Natural Resources



Operating mine



Processing facility

Anaconda - Au

Rambler - Cu-Au

Nugget Pond mill

Hi-Point peat

Teck - Cu-Zn

Atlantic  
Minerals

Beaverbrook - Sb

Trinity Resources

Vale -  
Hydromet Plant





# Anaconda - Pine Cove mine Commercial production in 2011



# Rambler Metals and Mining Canada Ming copper-gold mine

Commissioned Q4 2011  
First mining Autumn 2011  
Copper mill commissioned 2012  
Commercial production Nov 1  
2012





# Teck Duck Pond operations – Cu-Zn



- Employs ~ 300 in central Newfoundland since 2007





# Beaver Brook Antimony Mine

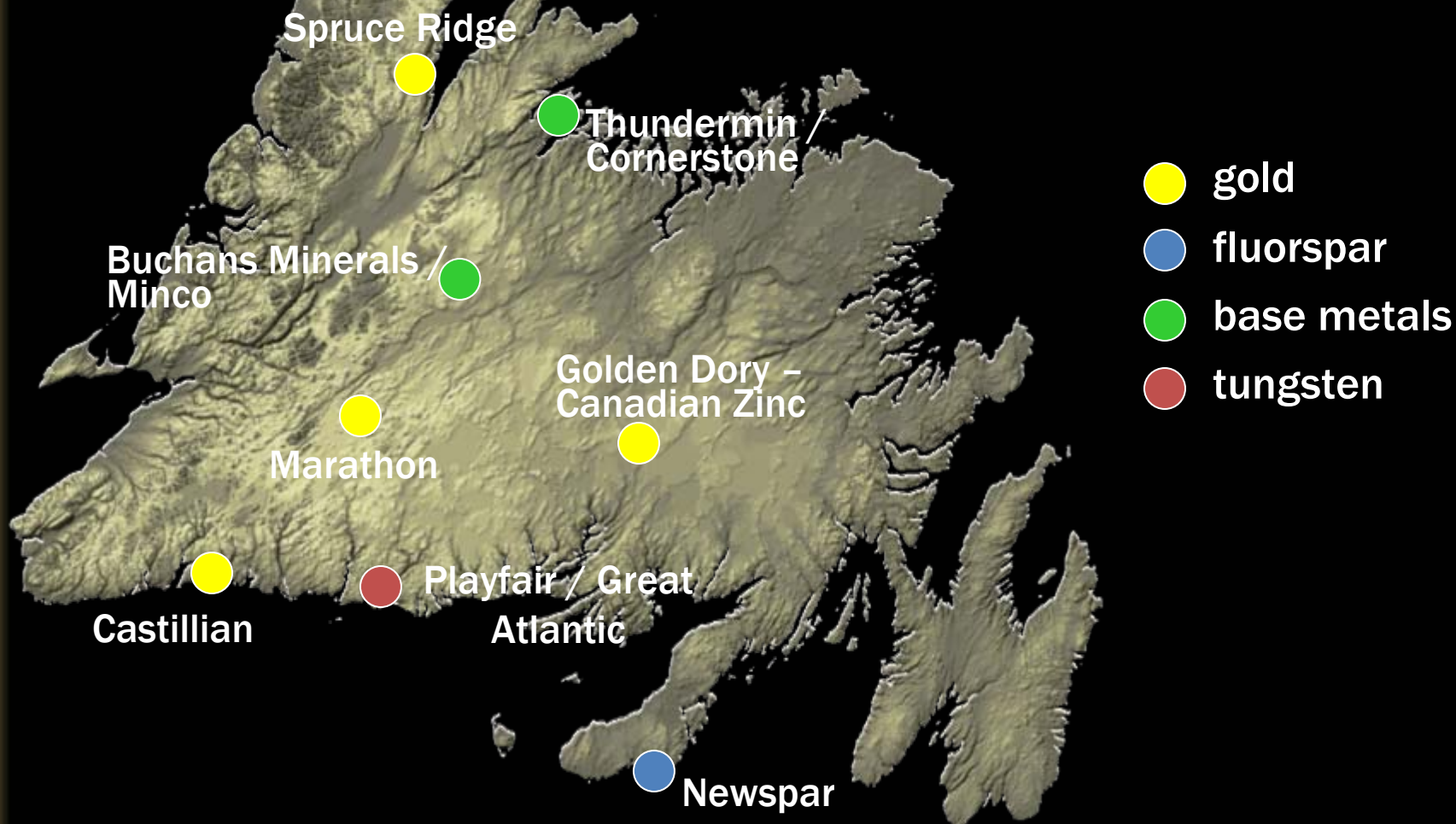
An aerial photograph of the Beaver Brook Antimony Mine processing facility. The central feature is a large, rectangular building with a white roof. To its left, a long, blue conveyor system extends from a large pile of dark, crushed material towards the building. To the right of the main building, there are two smaller, blue-roofed structures. The entire facility is situated in a cleared area of land, surrounded by dense green forest. A dirt road or path runs along the bottom right of the facility. In the upper left, there are some smaller buildings and parking areas.

China Minmetals ownership

Employs ~ 100 in central Newfoundland

Exploration underway to extend mine life

# Newfoundland advanced projects





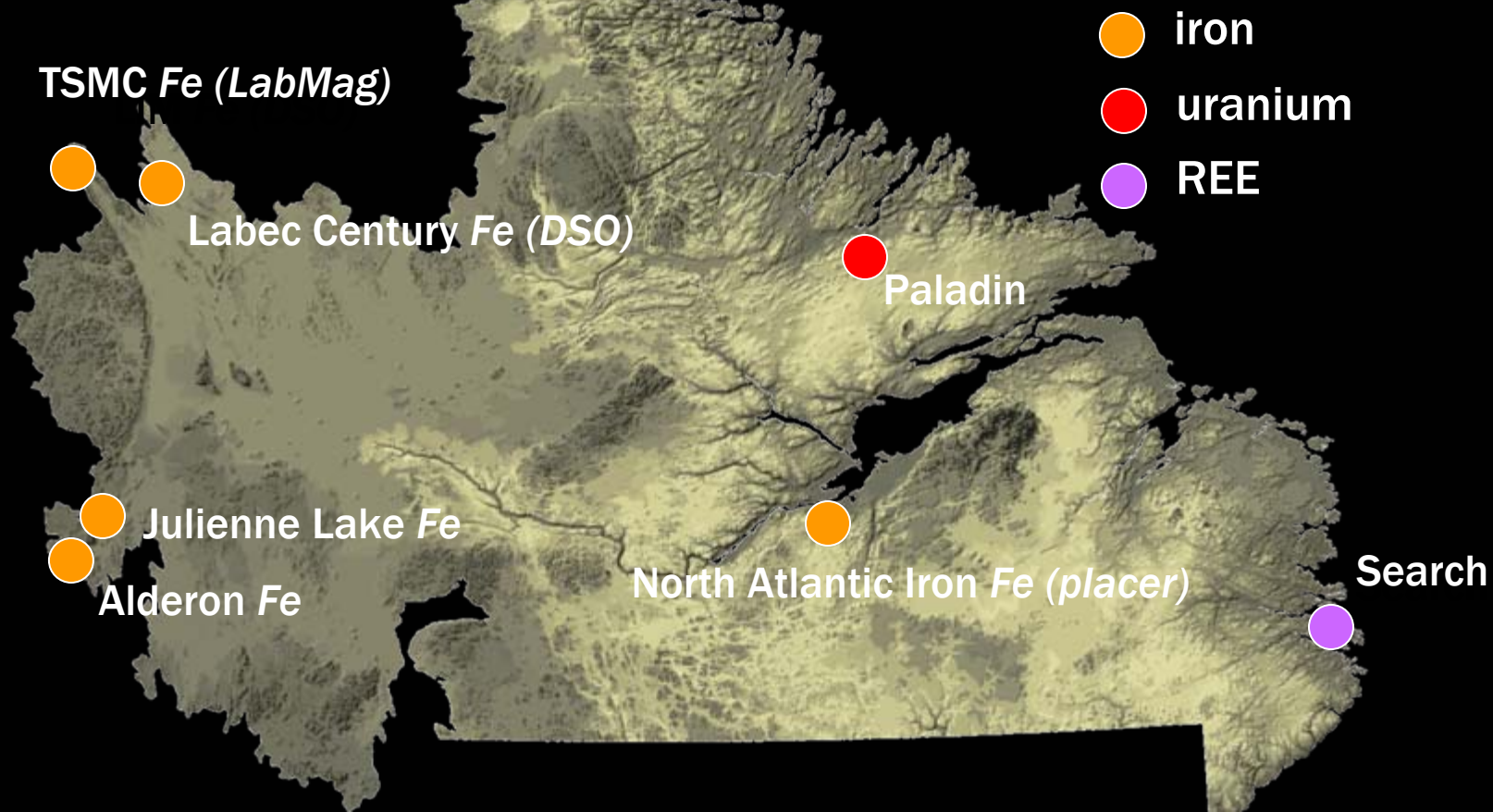
# Newspar Fluorspar Project



**Re-opening of former mines  
15 year mine life; 150 jobs  
Moving into construction  
Exploration in surrounding area**



# Labrador advanced projects





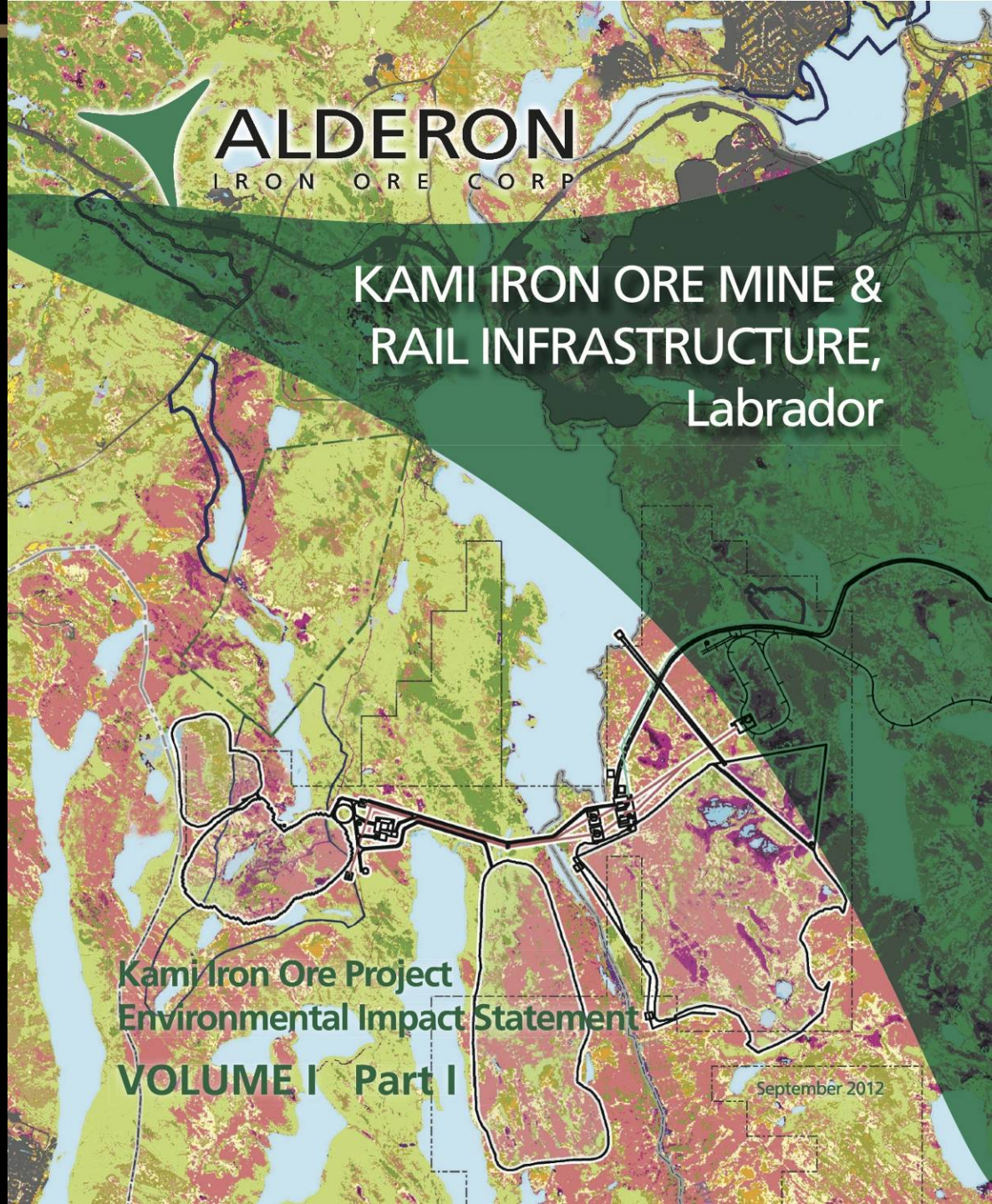
# **Alderon Kami project**

**EIS filing –  
September 2012**

**Feasibility study  
near completion**

**Hebei Iron & Steel  
Group partners**

**8-16 mta – 2015  
production**







## **Labec Century Iron Ore**

Joyce Lake project  
Registered for EA  
4 mta DSO mine



## **Tata Steel Minerals Canada**

Labmag feasibility study in progress – 22 mta taconite mine



# North Atlantic Iron Corporation

Pig iron production from mineral  
sands





An aerial photograph of a lush, green landscape. A winding river flows through the scene, surrounded by dense evergreen forests. In the center, a small cluster of buildings, including several red-roofed structures, is situated on a grassy clearing. The overall scene depicts a remote, natural environment.

# **Aurora Energy - Paladin: Michelin – Jacques Lake uranium project**

**Positive Preliminary Economic Assessment -  
2009**

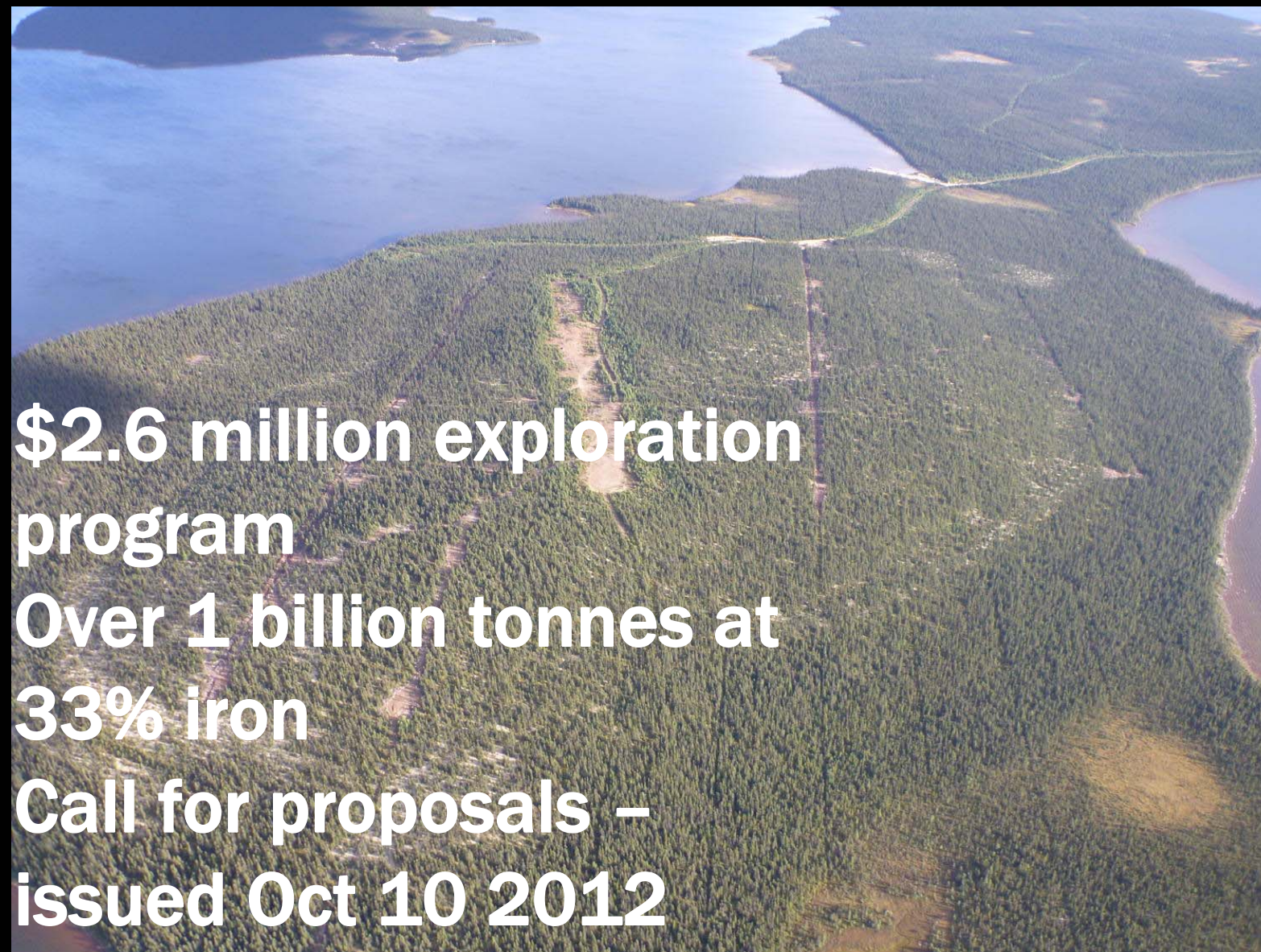
**Uranium mining moratorium lifted**

**December 2011**

**14,000m exploration drilling 2012-13**



# Julienne Lake



**\$2.6 million exploration  
program**

**Over 1 billion tonnes at  
33% iron**

**Call for proposals –  
issued Oct 10 2012**



# Mines Branch Support

- Geoscience mapping – iron ore and diamonds projects
- Mineral Incentive Programme- \$2.5 million
- On-line claim staking, web delivery of geoscience

