

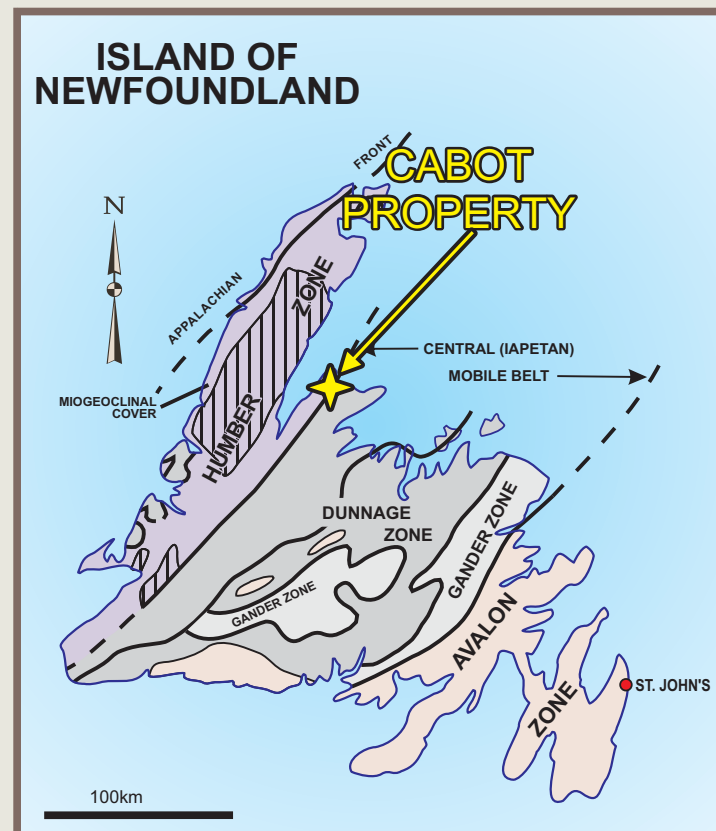
# NEWFOUNDLAND & LABRADOR

## Prospect • Discover • Develop



# Cabot Co - Cu - Au

Map 1. Property Location



The **Cabot Property** consists of 100 claims on the eastern side of the Baie Verte Peninsula, 7km North of the mining community of Baie Verte. Access to the prospect is via route 410. The interior of the property is accessible by established wood roads.

### Regional Geology

The Cabot Prospect lies in the Humber Zone of the Appalachian Orogen proximal to the Baie Verte Line, a major tectonic break, which separates mainly volcanic and sedimentary rocks of the Dunnage Zone (Iapetus Ocean), to the east, from mainly shelf facies carbonate and slope facies clastic sediments of the Humber Zone, Laurentian Margin. (Hibbard, 1983).

### Economic Geology

The Cabot is located in the prolific Baie Verte Peninsula which has been home to 14 Mines, 2 of which are still in commercial production. (7 VMS, 5 Gold, 1 Asbestos, 1 Molybdenum)

### Highlights

- 6 historic Au-Cu occurrences; 17 drill holes
- Stockwork pipe feeder zone with 10-25% sulphides.
- Drill intersections - 21.6 m with .39% Cu Including 1.33% Cu over 3.6 m
- High grade samples to 12 oz/t Au
- Deposit Model: Volcanogenic massive sulphide
- Large untested coincident VTEM and Residual Magnetics anomaly located along Strike of showing

Revised  
January, 2019

### FOR MORE INFORMATION CONTACT:

Ken Lewis  
Ph: (709) 532-4814 Cell: (709) 532-6680  
[kennethjohnlewis@hotmail.com](mailto:kennethjohnlewis@hotmail.com)

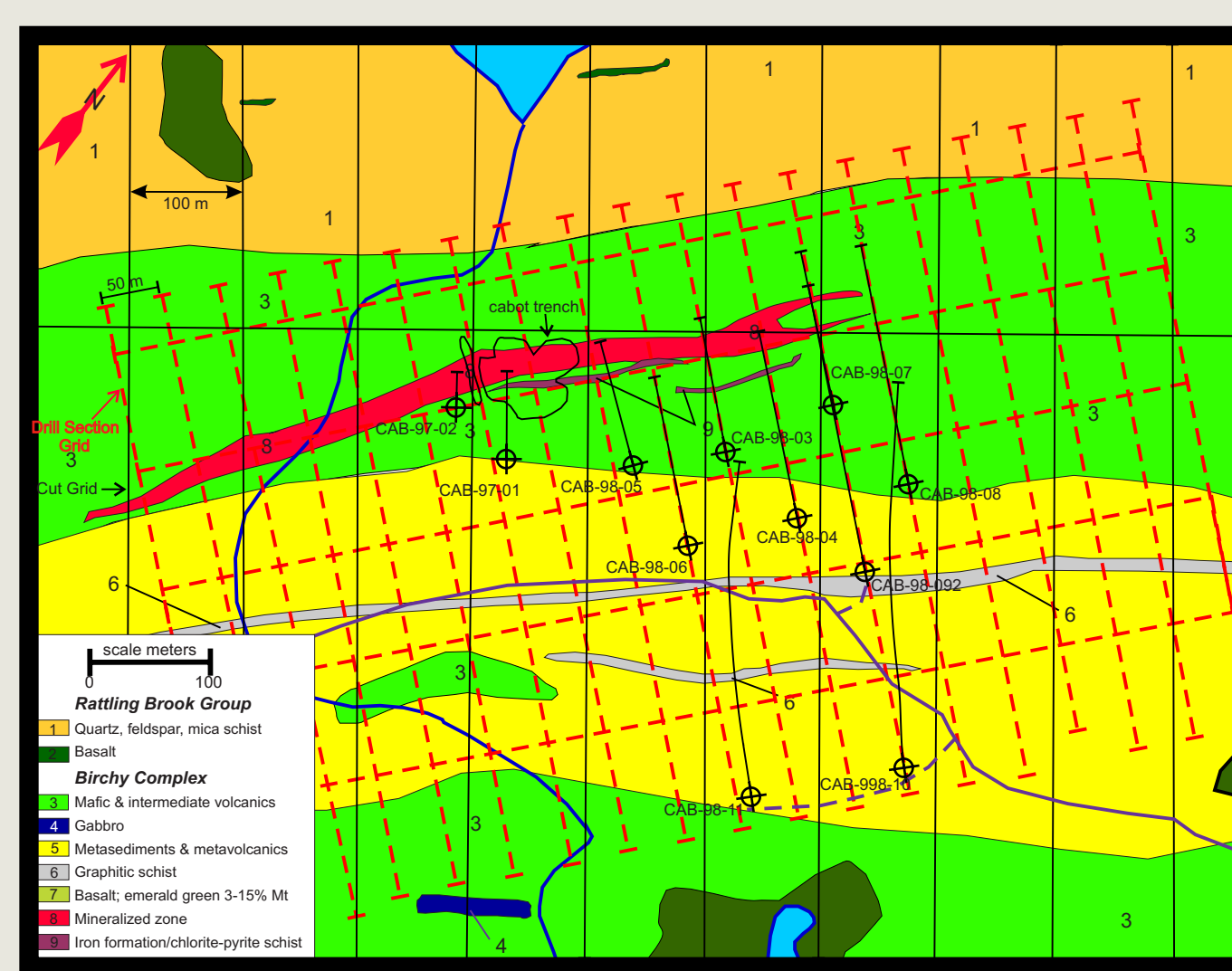
The **Cabot Copper+Cobalt Prospect** has been traced 350m on surface, and drilling has tested the zone over a 550 m strike length and vertically for 450m. The mineralized corridor dips steeply to the SW and plunges to the NW where it remains open. The prospect consists of intensely chloritized and sericitized zone hosting an estimated **10-25% stringer/stockwork sulphides**. The zone is interpreted to be a feeder stockwork pipe commonly associated with volcanogenic massive sulfide deposits.

In drill core, the **Cabot zone averages 0.39% Cu over 21.6 m with higher grade section grading up to 0.90% Cu over 5.78 m, 1.9% Cu over 2.78 m and 1.33 % Cu over 3.66m.**

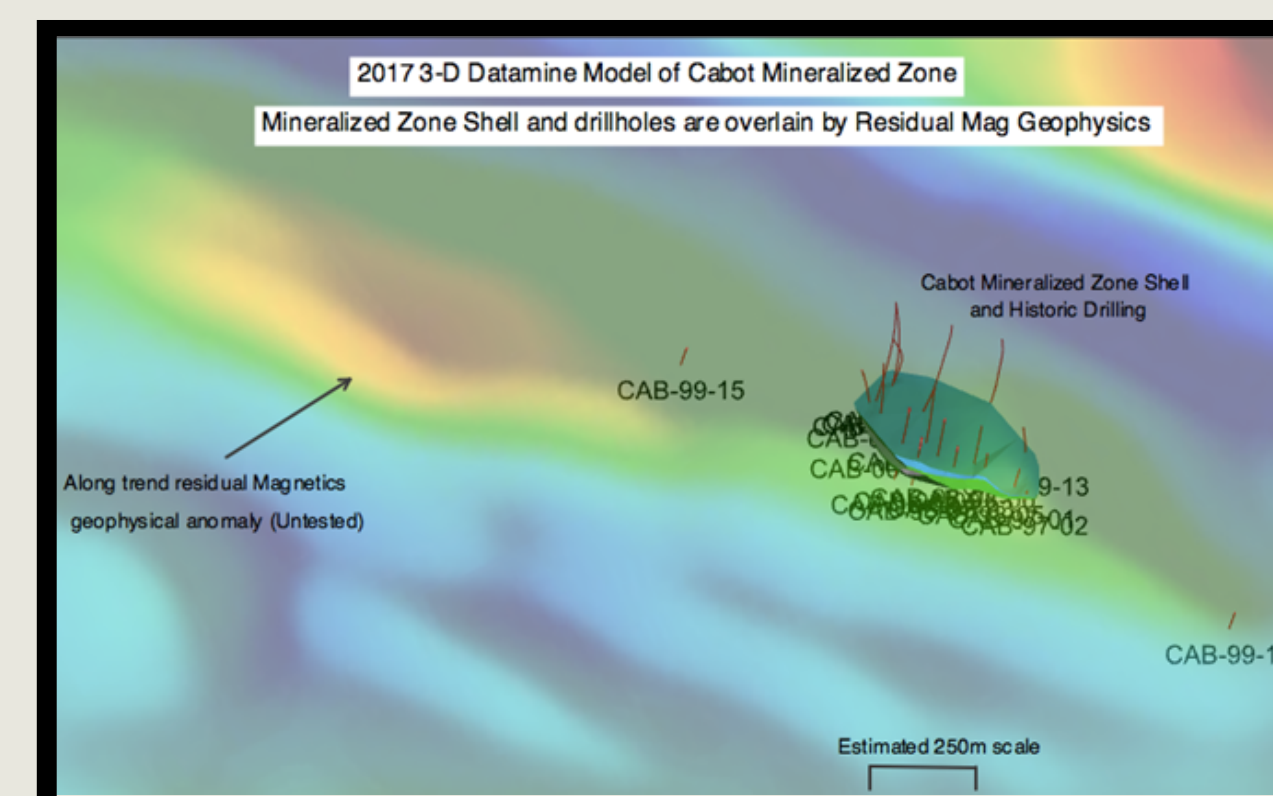
The Cabot Copper Prospect was drilled in 1997-2000, since that time the property was covered by a regional magnetic survey and VTEM Survey. Both the VTEM and Magnetic surveys have identified large coincident anomalies along strike of the Cabot copper prospect that have not been drill tested. (Map 3)



Picture 1: Cabot Copper+Cobalt Prospect. W. Hurley for scale



Map 2: Grid Geology and Drill location



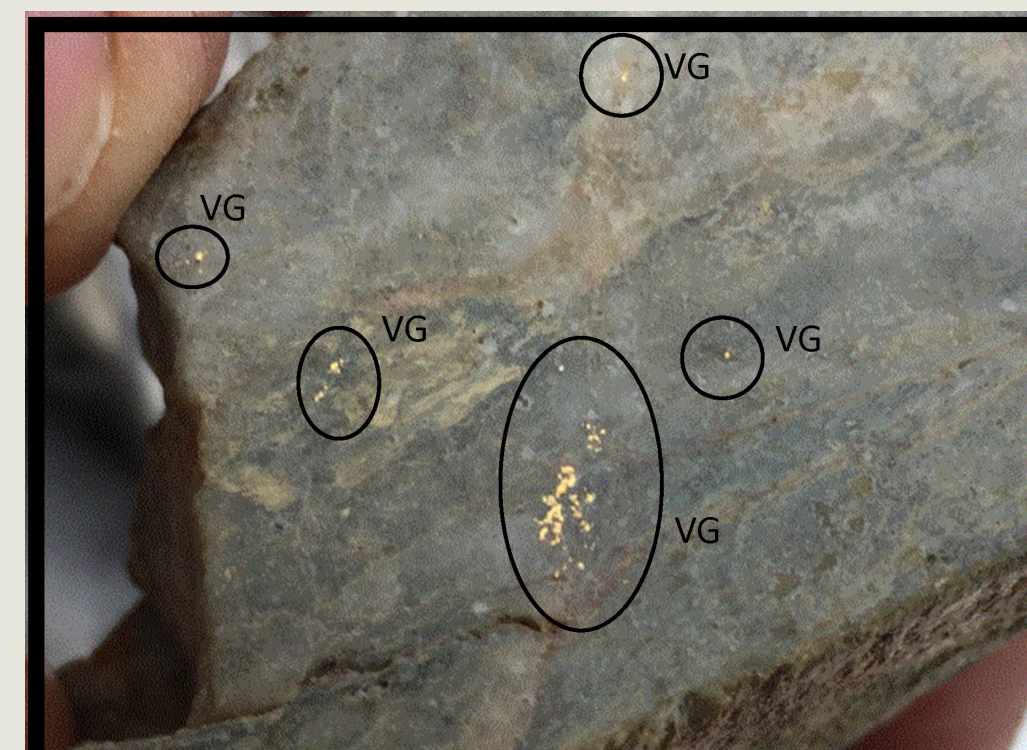
Map 3: 3D Datamine Model depicting historic drilling and sulphide shell. Model has residual magnetics overlay depicting along strike untested Anomaly.

### Marble Cove Au Showing

Smith(1989) reported values of **9.97 g/t Au** and **8.30 g/t Au** from grab samples taken from a quartz vein ranging up to 1.0 m in width. Altered wall rock adjacent to the North Vein assayed up to **6.5 g/t Au** (Evans, 2004).

In 2003 and 2004 a privately owned mineral exploration company British Canadian Mines Ltd. drilled 15 drill-holes totaling 1671m on the Marble Cove Prospect. No results were disclosed and later workers concluded that the drilling failed to effectively test the marble cove mineralization

In 2012 prospectors working for Tawsho Mining collected samples from Marble containing Visible Gold (Picture 2). The assayed portion of the specimen graded 12 Oz/t Au. (Tawsho Mining Inc. News Release March 19, 2010)



Picture 2:  
Visible Gold  
bearing hand  
Specimen  
collected from  
Marble Cove  
Prospect.