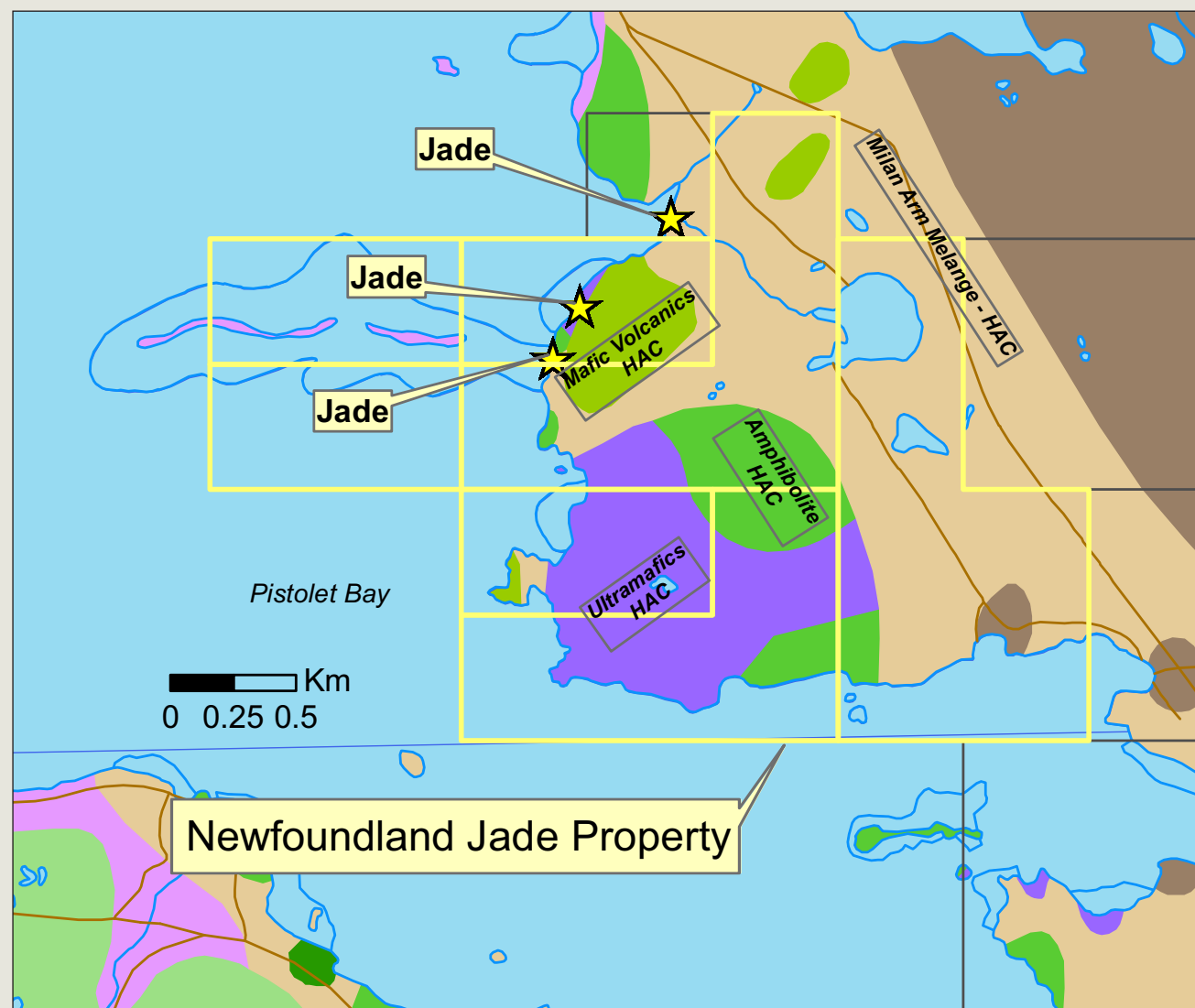


NEWFOUNDLAND & LABRADOR

Prospect · Discover · Develop



Newfoundland Jade



The *Newfoundland Jade Property* is located on the Northern Peninsula of Newfoundland approximately 4 km south of Raleigh. Access is via a paved all weather highway northward from St. Anthony to the entrance of Pistolet Park, then by walking trail from the highway west to the beach then south 500 m along the coast (McDonald, 1998), (NTS Map Sheet 2M/12) (Maps 1 and 2).

Regional Geology

Tectonostratigraphic Zone - Humber. The regional geology represents shelf and foreland basin environments formed on the continental margin of Laurentia in the Cambro-Ordovician period.

Local Geology

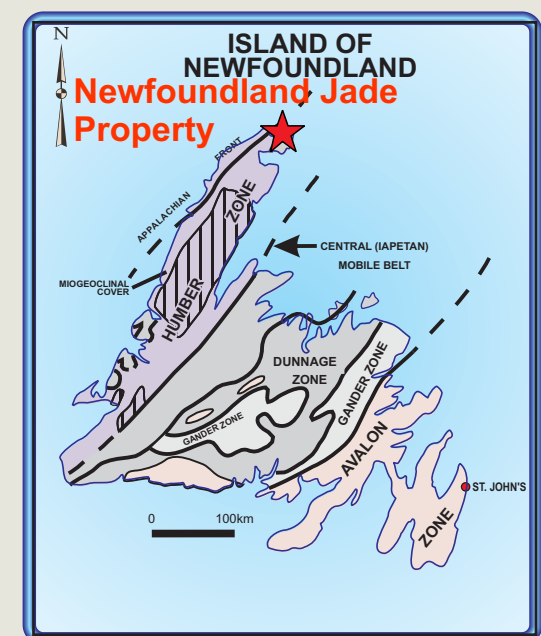
The property is underlain by mafic volcanic, amphibolitic, ultramafic and melange rocks of the Humber Arm Allochthon (HAC).

Gem Stone - Jade

Nephrite jade was first noted to occur in the area in 1984 by R.K. Stevens of Memorial University of Newfoundland. The following is taken from an abstract written by R.K. Stevens on Alteration of Ophiolites in the Humber Zone "Ophiolite Oddities: Preliminary Notices of Nephrite Jade, Sr-Aragonite, Troilite and Hyperalkaline Springs From Newfoundland" and included in McDonald, (1998). "Alteration of ophiolites in the Humber Zone has lead to the formation of several unusual minerals. Nephrite jade occurs in the Milam Arm Melange that is developed under the leading edge of the Hare Bay Allochthon. The jade forms in a reaction zone between cataclastic serpentine and basalt or gabbro blocks under hydrostatic pressure. It is a special sort of rodingite. Jade color varies between pale brown to black and forms reniform masses of felted tremolite-

actinolite. Rare veins of cat's eye nephrite have also been found."

Jim McDonald, a prospector from British Columbia staked the property in 1997 and prospected the area for jade, gold and stone. He noted botryoidal jade occurring as nuggets in a serpentine vein. Specimens of jade were collected and processed into various types of jewelry. Several of the jade occurrences have recently been staked by the present owners, who have successfully identified gem quality jade and made various pieces of jewelry (see Plates).



Map 2: Claims Location and Geology

Highlights:
Two historic Jade occurrences
Gem quality jade



Jade Egg



Botryoidal Jade



Jade Jewelry

FOR MORE INFORMATION CONTACT:

Art Gardiner

Tel: 709-489-0266

E-mail:

newfoundlandjadehunter@hotmail.com

February, 2020

