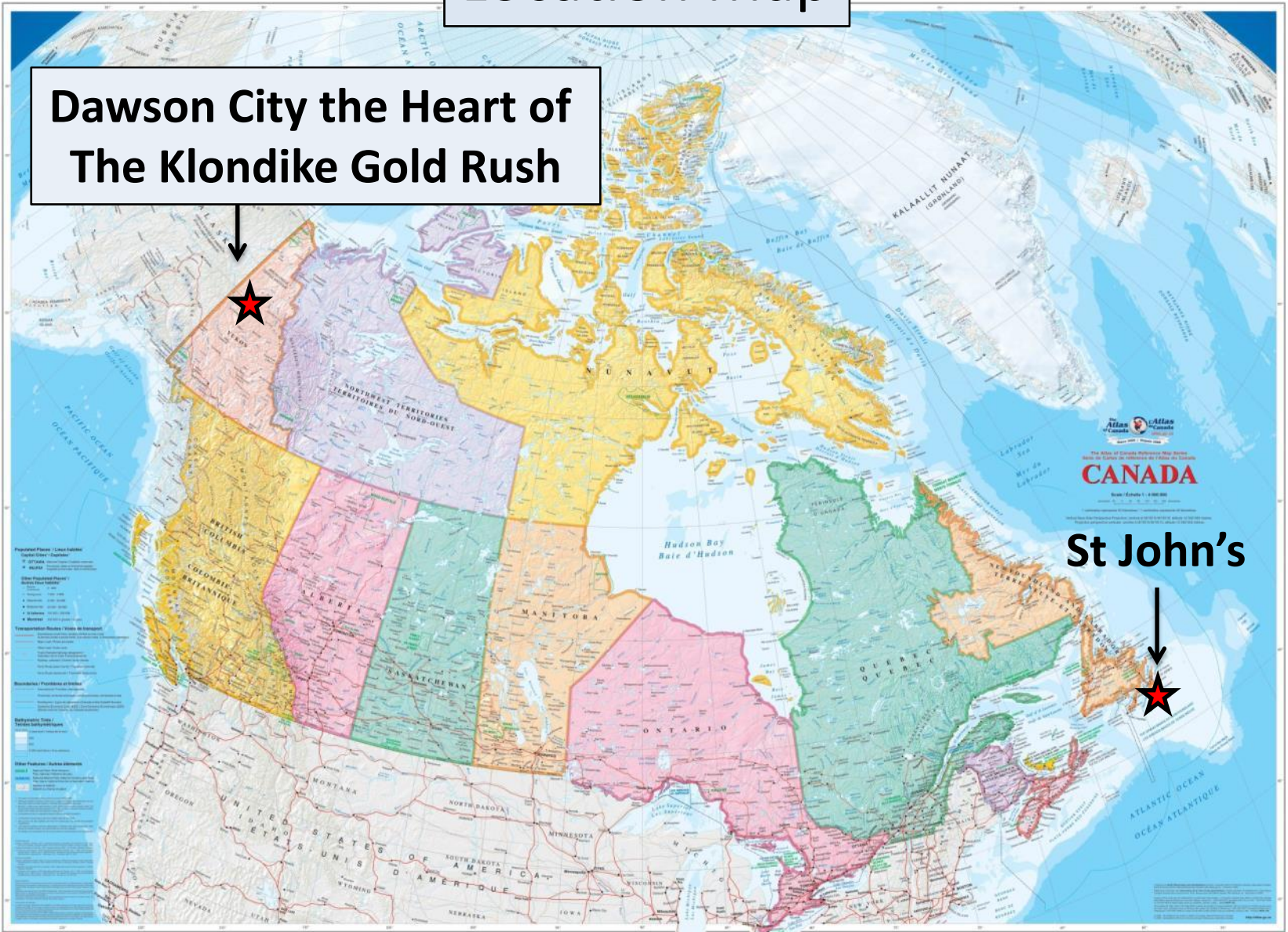


Location Map

**Dawson City the Heart of
The Klondike Gold Rush**



St John's



Atlas of Canada
CANADA
Scale: 1:1,000,000
© 2011 Natural Resources Canada



Geochemical Prospecting

Looking Under the Cover

By Prospector Shawn Ryan

Prospecting in the Dawson area

The Double Edge Sword

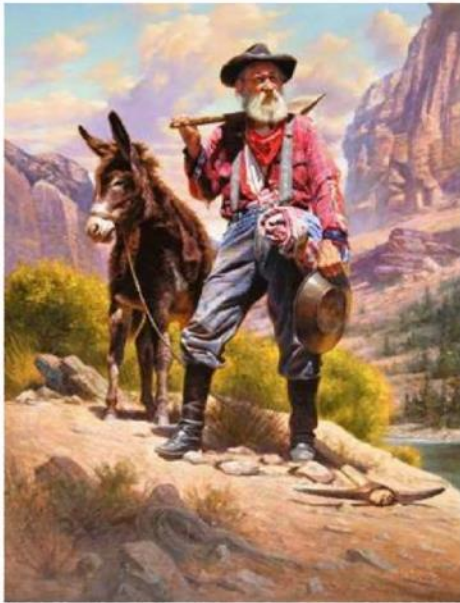
As we all know the exploration business has a low probability of success. So the trick is to somehow increase your odds.

Working in the Dawson area has its own unique problems, by being located in un-glaciated terrain, with less than 2-3 percent of outcrop exposure.

Given that traditional prospecting methods had prospector looking for mineralized float on surface creates an even lower probability of finding something in the Dawson Area.

This may be partly the reason why no new discovery has been found in the Dawson Area since the turn of the century.

A different prospecting approach had to be taken if one was to survive as a Prospector.



Prospecting in the Dawson area

The Double Edge Sword

The nature of the dawson area being located in the unglaciated terrain created a unique problem, but also a unique advantage.

There is no real outcrop to find but lots of soils.

The soils from the area has also not travelled, hence any anomalous soils found are almost in place.

So soil sampling became the natural prospecting method of choice

It took a couple of years to refine the science of soil sampling and now it is primary prospecting method of choice for this area.



Prospecting in the Dawson area

The Art of Soil Sampling

The importance of soil sampling has often been overlooked and deemed to be the least important job on an exploration program.

We have often seen soil sampling programs in the past collecting 60-80 samples per day. Trying to get as many soil samples as possible.

What happens with any job when quantity increases, quality starts to decrease.

In our business where one or two soil samples can be the clues to finding 2 billion dollars worth of gold, we try our best at taking a quality soil every time.

Now, quality soils turn out to be tricky in the unglaciated terrain.

The normal B-horizon soils just did not work, one had to dig a little deeper.



Prospecting in the Dawson Area

The Art of Soil Sampling



We conducted many test plots and the results were dramatic with soil samples from the traditional upper B-horizon (10-15 cm) running at 10-12 ppb Au and a sample from 60-80 cm ran up to 200 ppb Au.

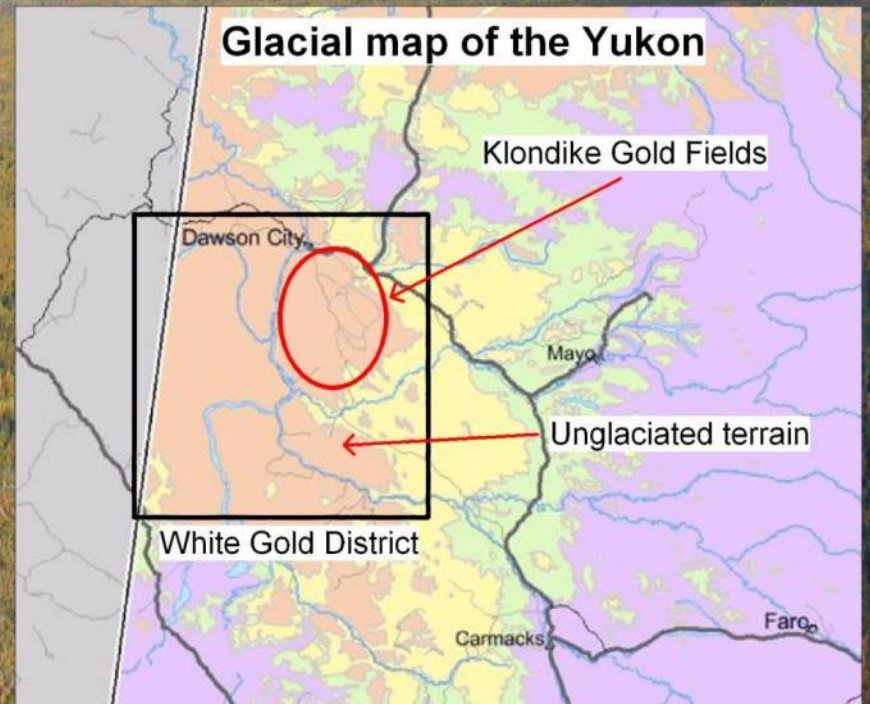
We tried our test on many terrains and the results were all the same, deeper soil sampling resulted in better assays.

With this new understanding we now gather all our soils from lower B-horizon or upper C-horizon. We tell our soil samplers to auger down until you start hearing your auger grind through rock fragments.

This usually turns out to be somewhere around 45 - 80 centimeters down depending on terrain conditions.

Yukon Unique Glacial History

The Dawson District is very unique in that it has never been glaciated, hence this is why Prospectors were able to locate and mine 13 to 20 million ounce of placer gold from the creeks. This also created a unique hard rock prospecting problem, hardly any real outcrop exposure were to be found.



Chasing the Elusive Sasquatch



Sasquatch Tracks

The Klondike Gold fields produced 13-20 million ounces of placer gold, with no known source ever seen or found.

Does Sasquatch (Hard Rock Deposits)
Really Exist Around Placer Gold Deposits?

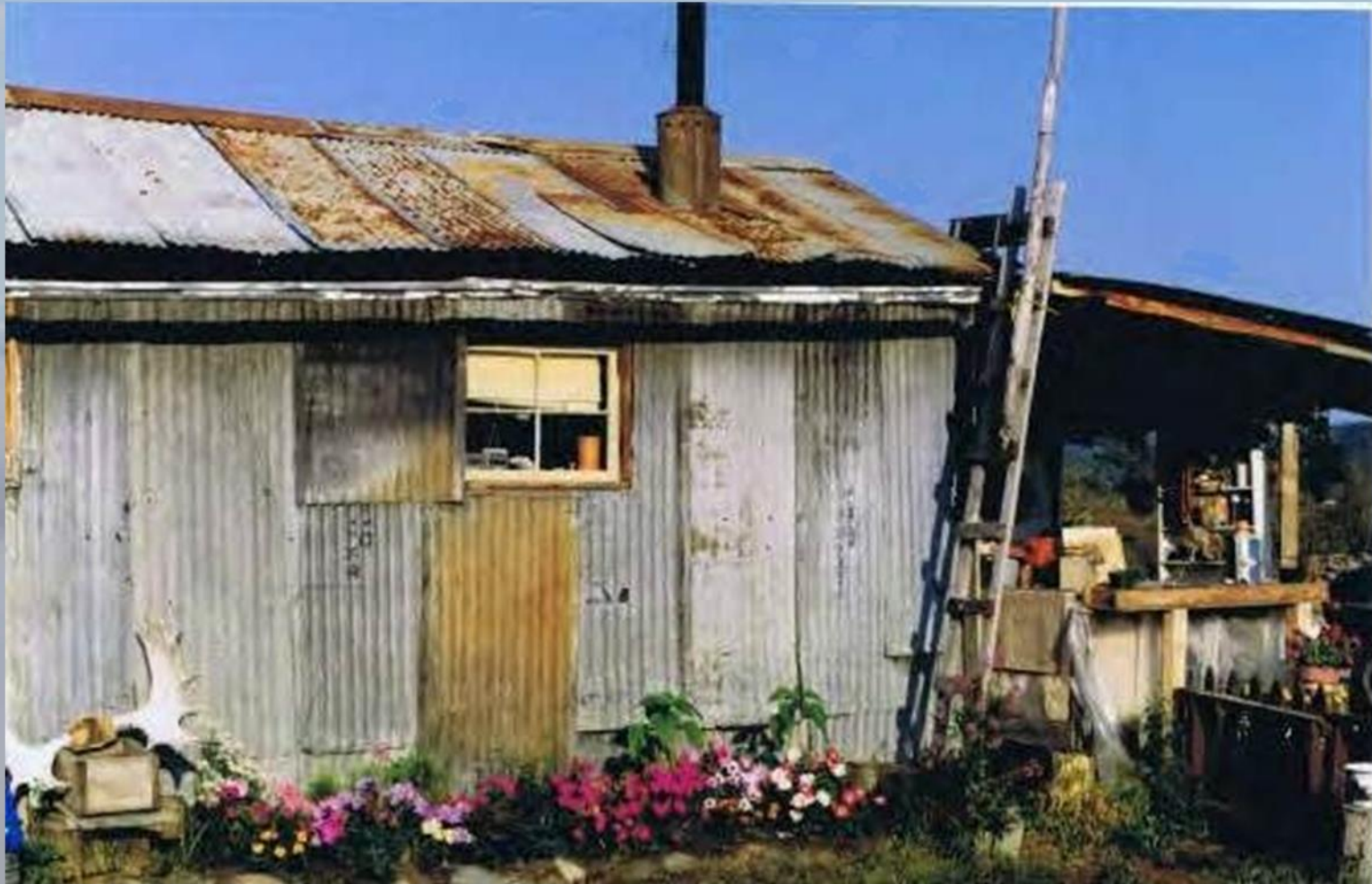


“The First Thing One
Must Believe
That the Beast Does Exist”

The Hunt Begins

“With a Soil Auger”

Tin Shack Days Starting out as a Prospector

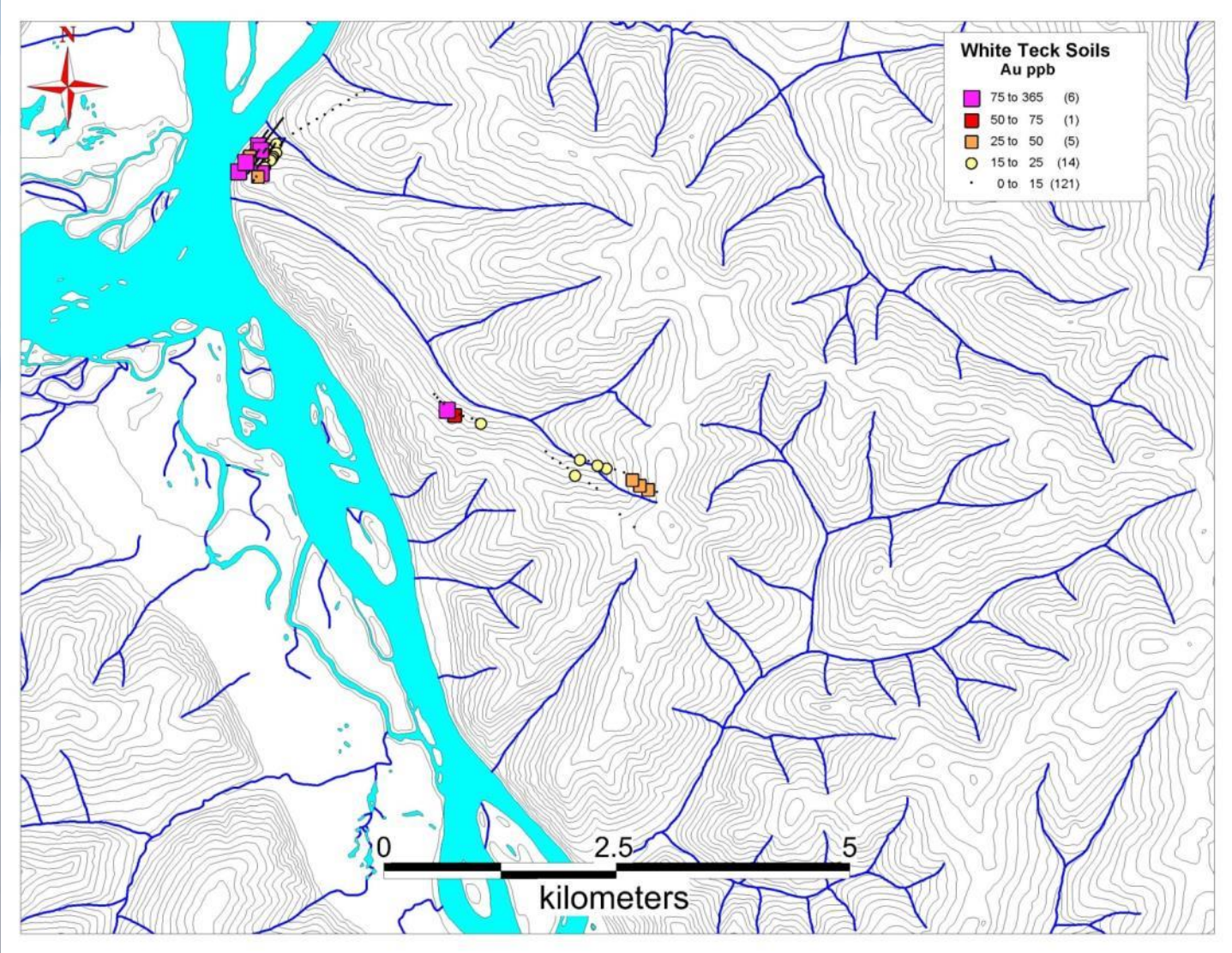


Prospecting the Yukon River
Late in the Fall of 1996
Cathy is 7 month Pregnant

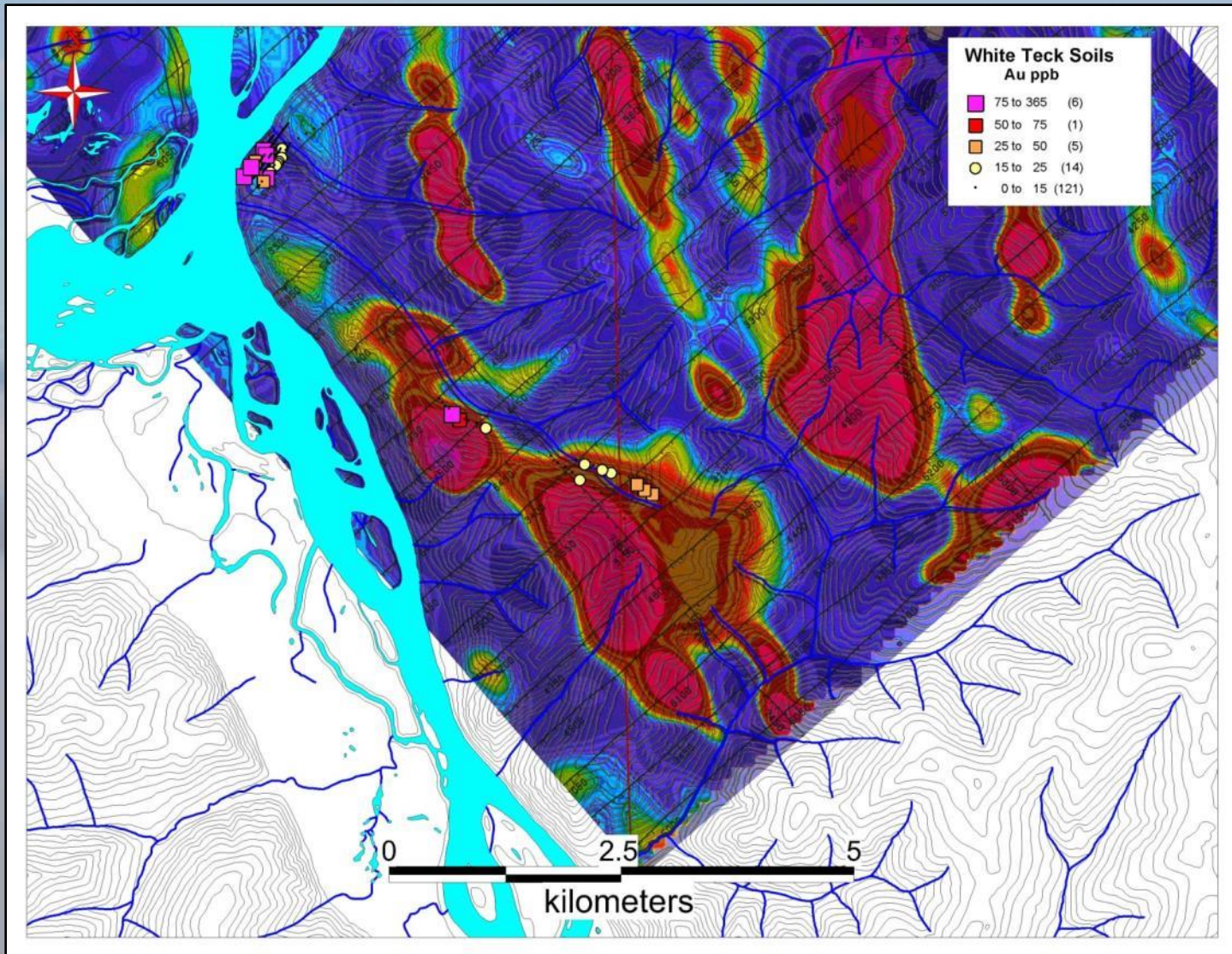


With the old Cedar Strip Freighter Canoe

Teck 1999-2000 Soils

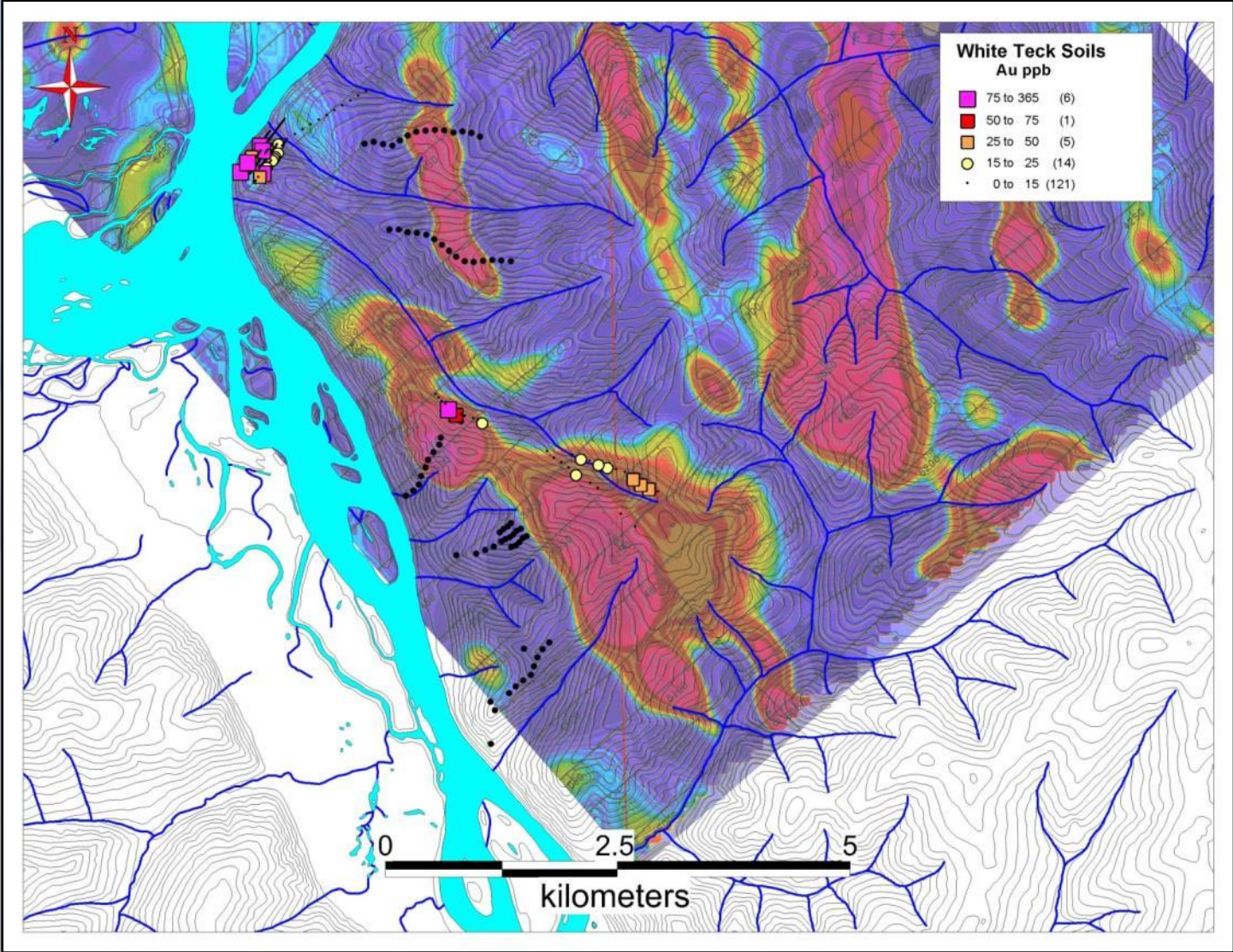


Teck 1999-2000 Soils over GSC Mag

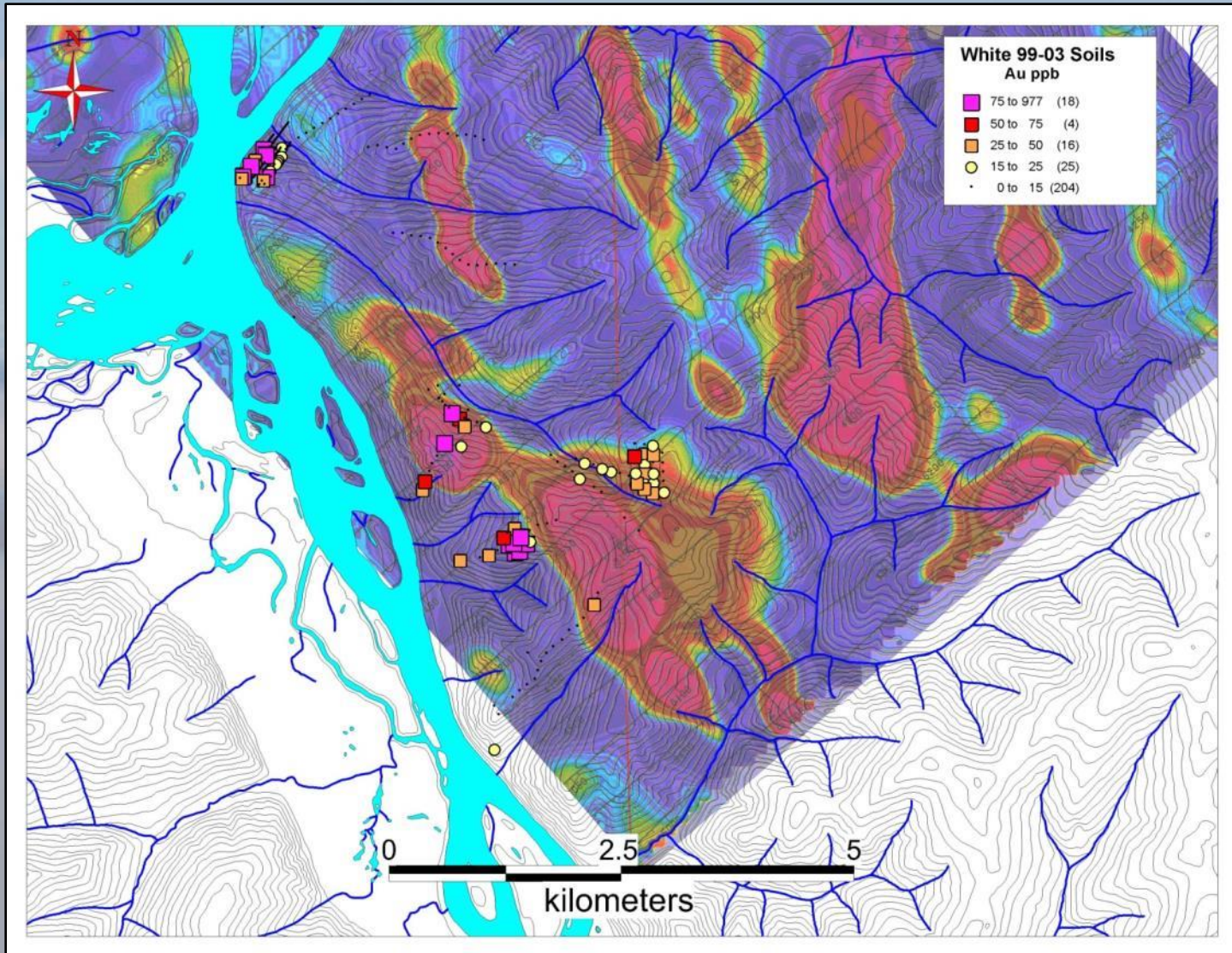


The GSC Flew a Airborne Radiometric Survey in 2002

2003 Soil Location YMIP Program



2003 Soil Results



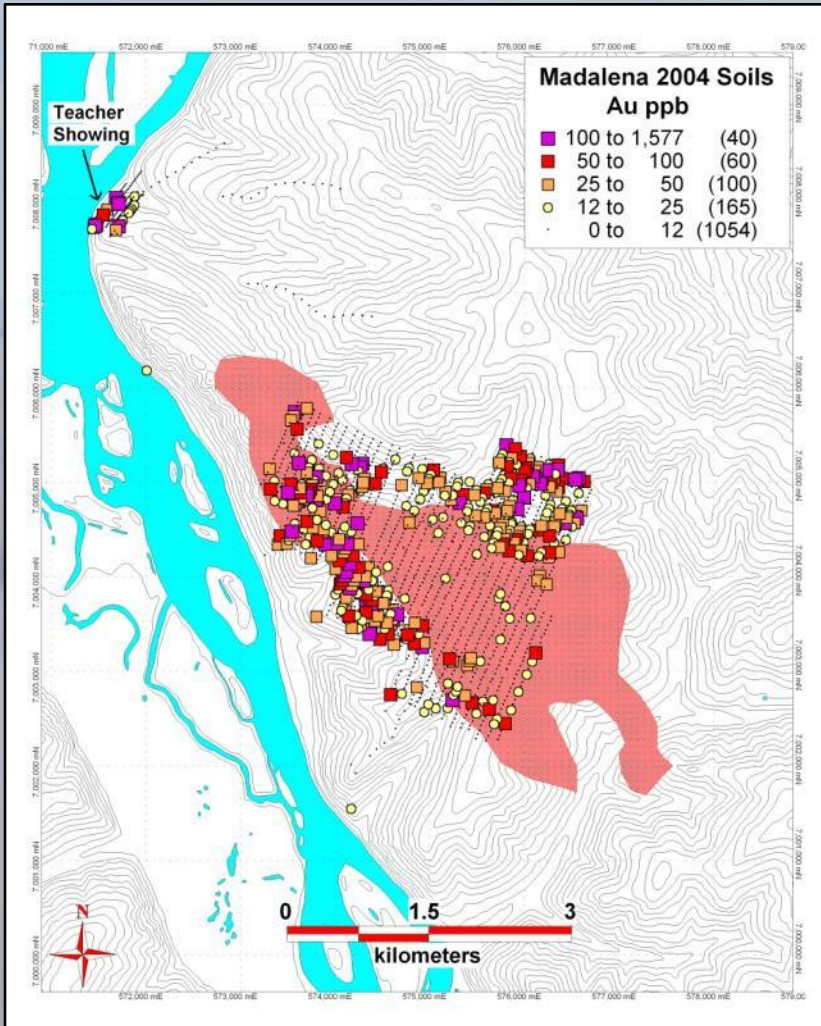
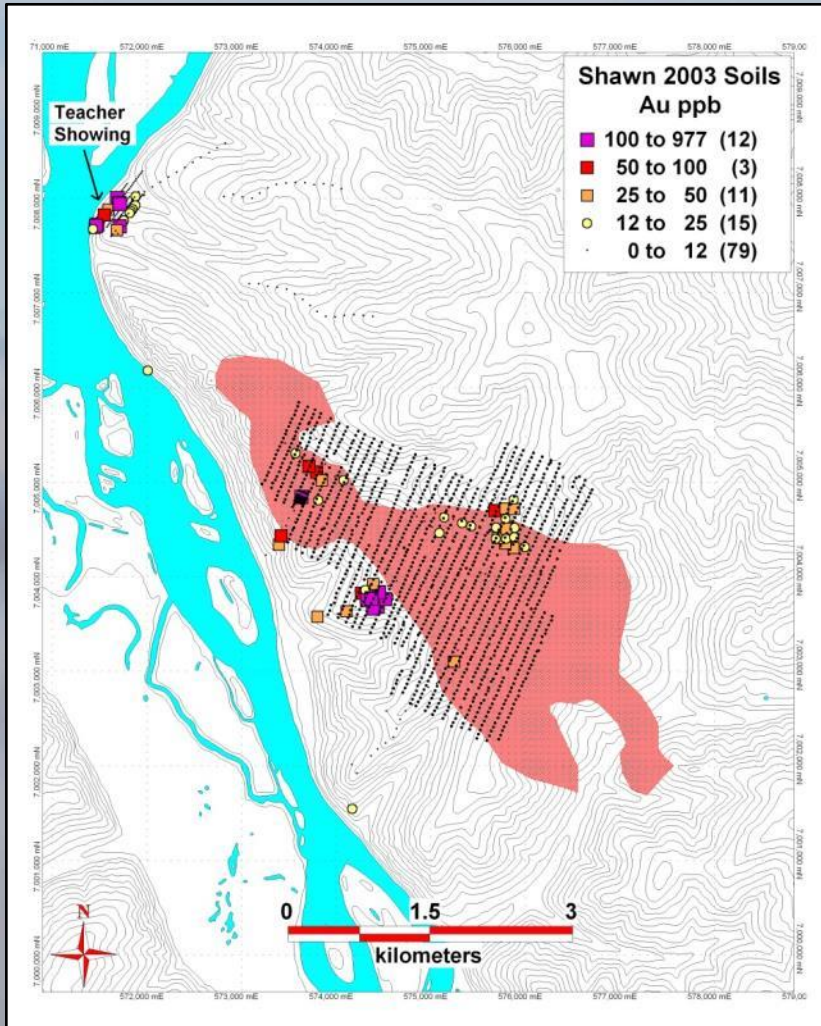
A Rock is Found

In 2003 I find a flat outcrop of Quartz that ran 58 g/t Gold



I Option Property in early 2004

Gold Soil Map



Soil Survey 2004

CanDig Follows Up





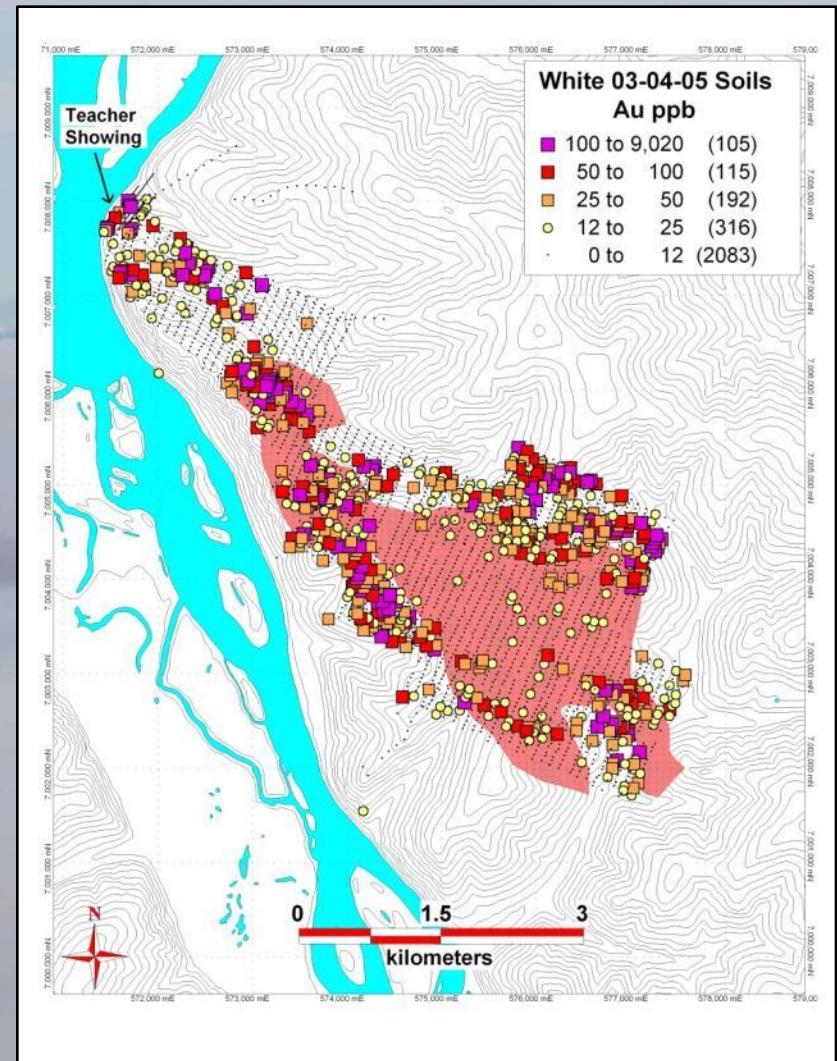
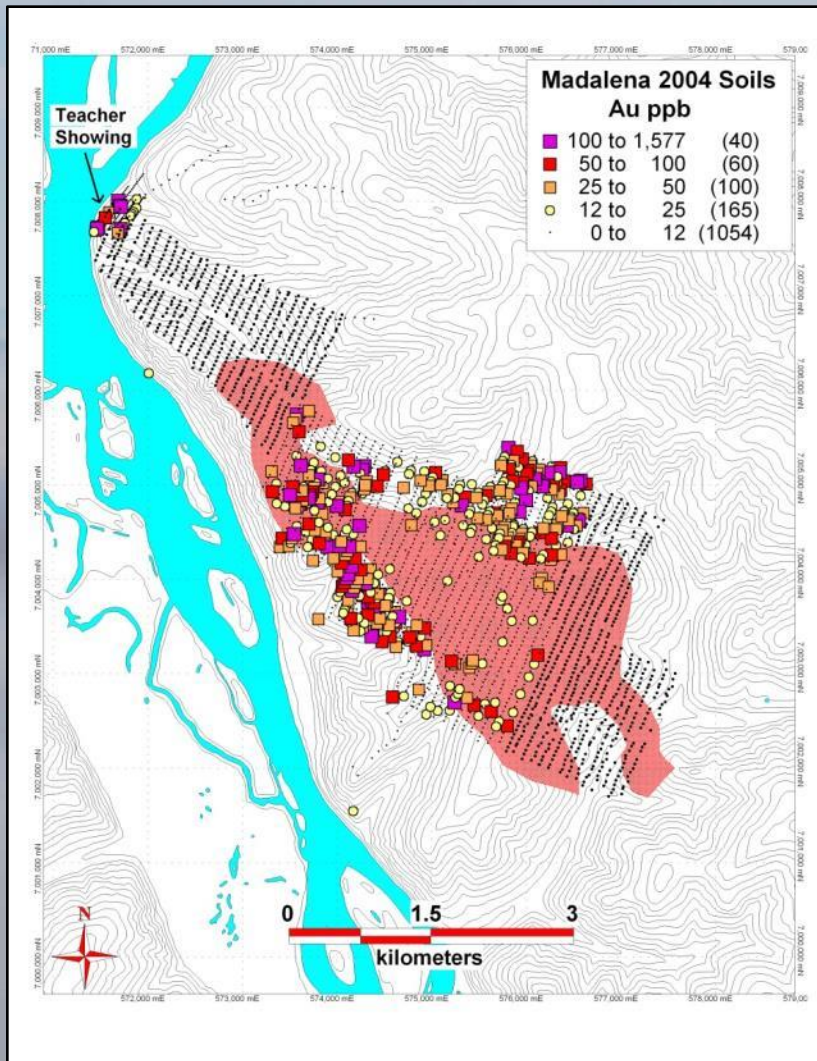
CanDig Uncovers

The 2004 trenching program uncovered two nice quartz veins with visible gold. Could this be Ogilvie's rumored Quartz Vein?

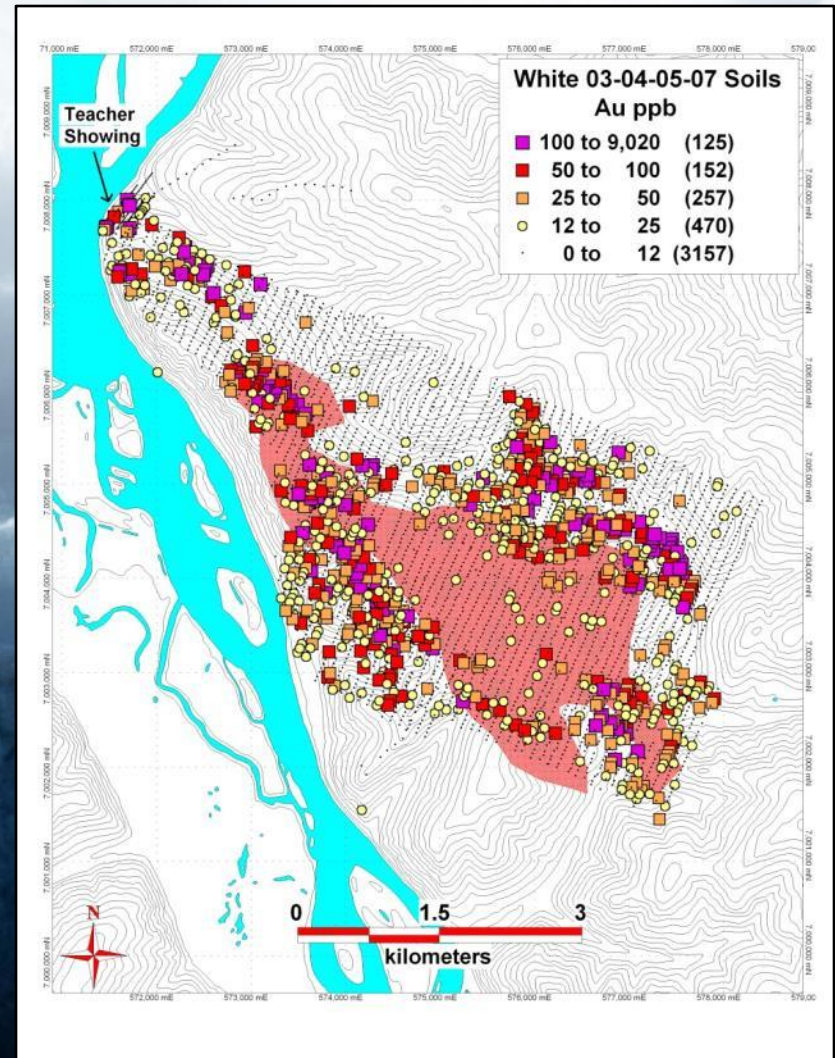
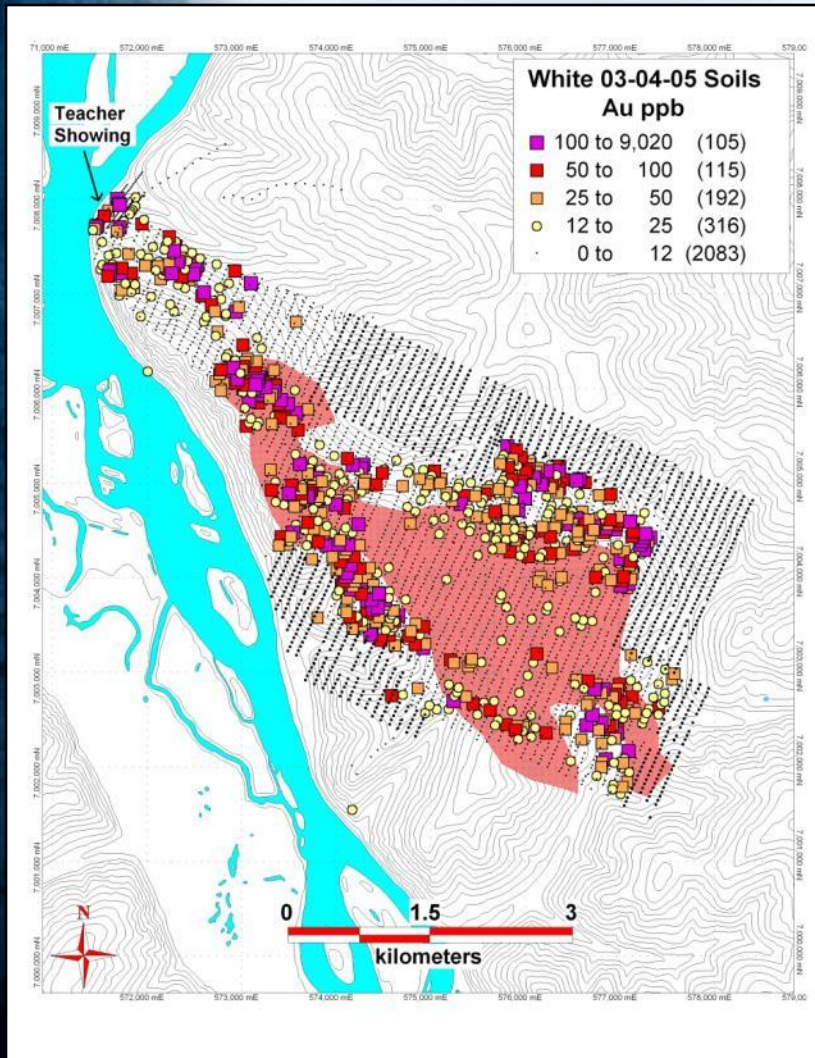


Junior Continues to Expand the Soil Anomaly

Soil Survey 2005



Underworld Options Claim Block in May of 2007



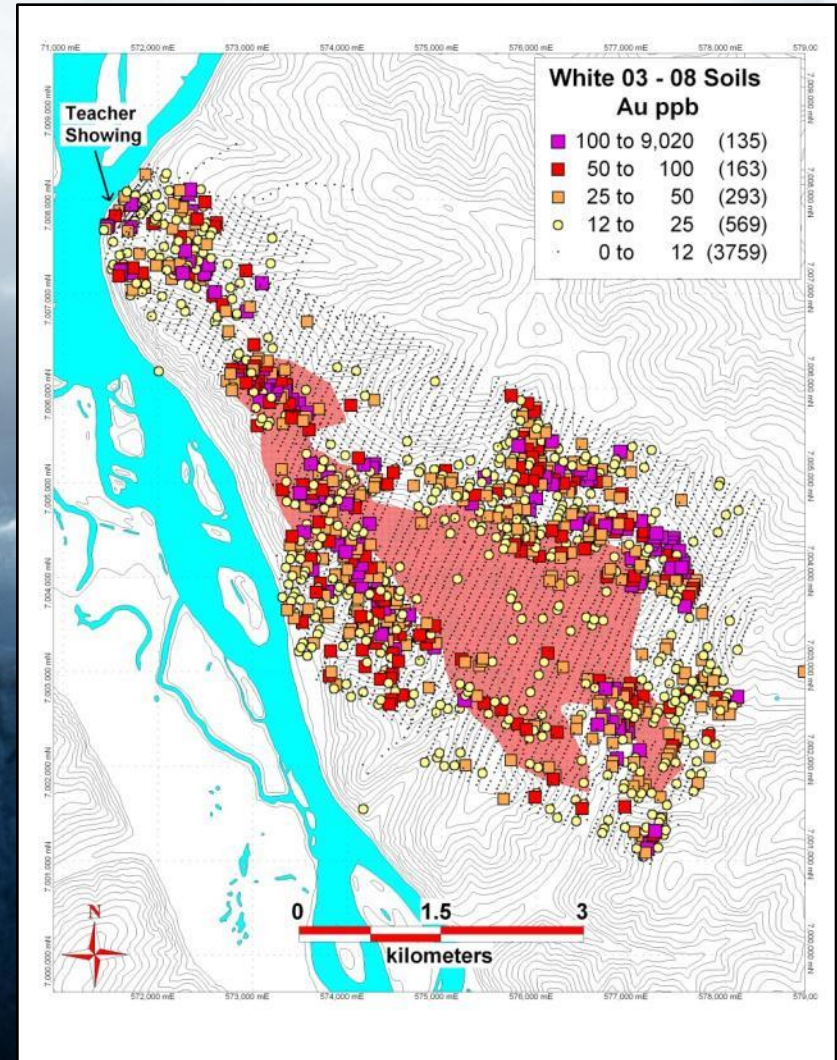
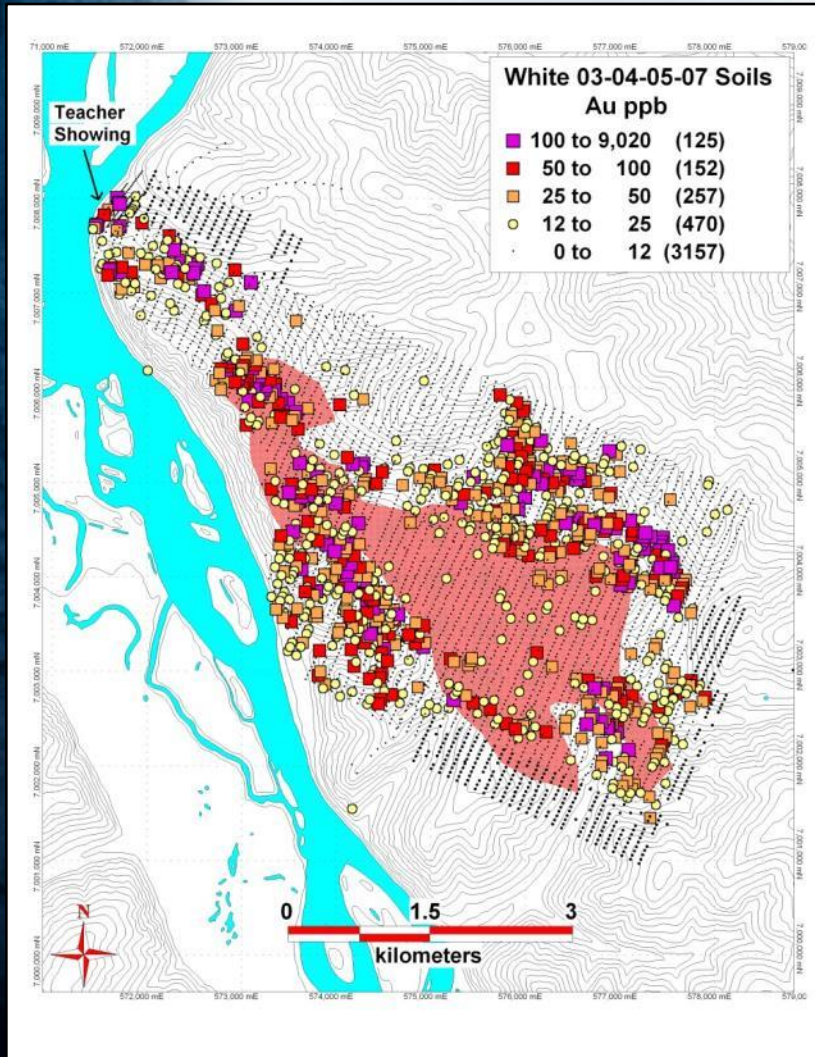
Underworld 2007 Trenching Program



Shallow Can Dig trenching uncovers 28 meters of 1.37g/t Au

UNDERWORLD
R E S O U R C E S

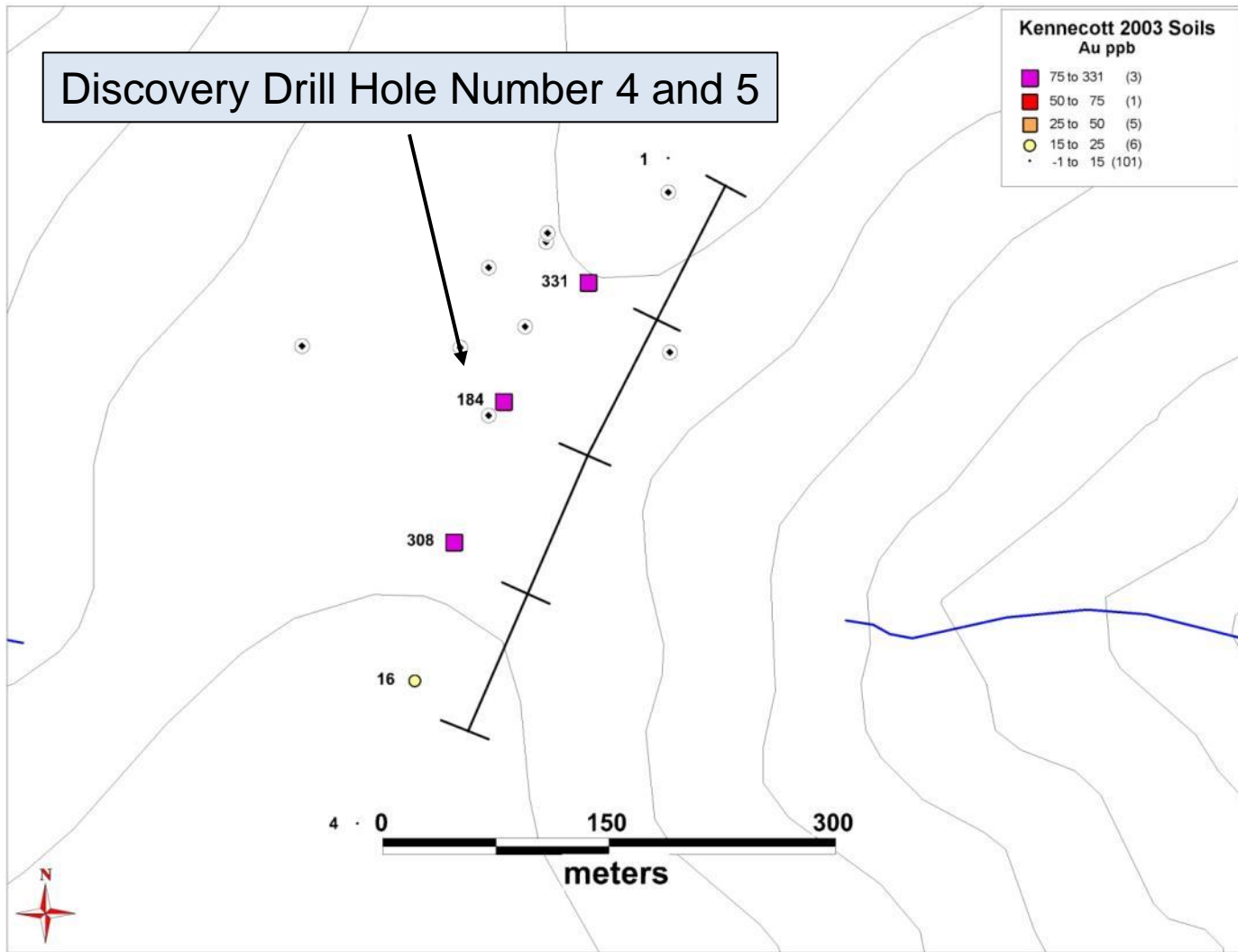
Underworld Continues the Soil Surveys and Drills the first hole in June 2008



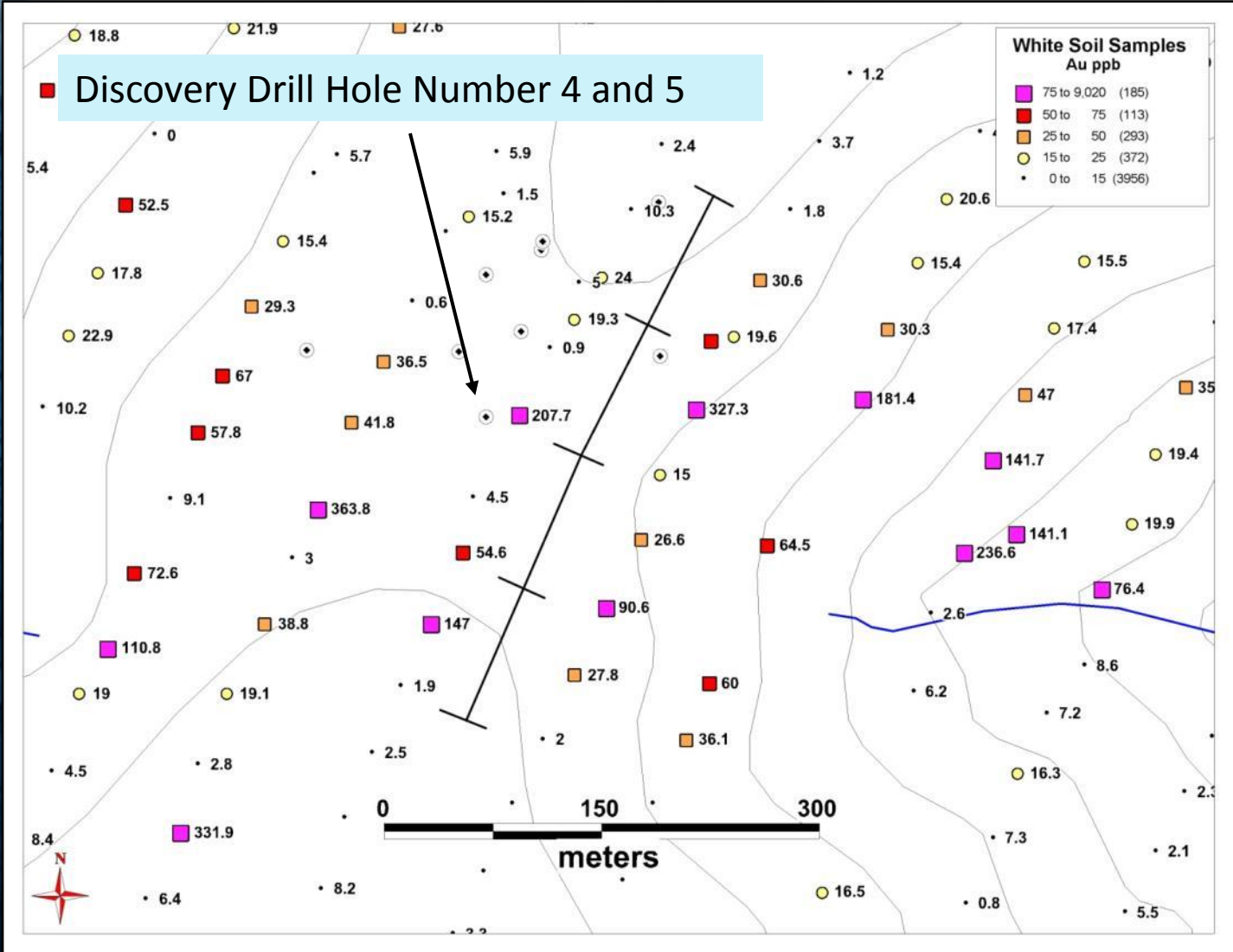
Regional Ridge and Spur Soil Sampling



Discovery Drill Hole Number 4 and 5



Just How Important Can One Soil Be



Underworld 2008 Discovery Hits visible Gold in the Fourth Drill Hole

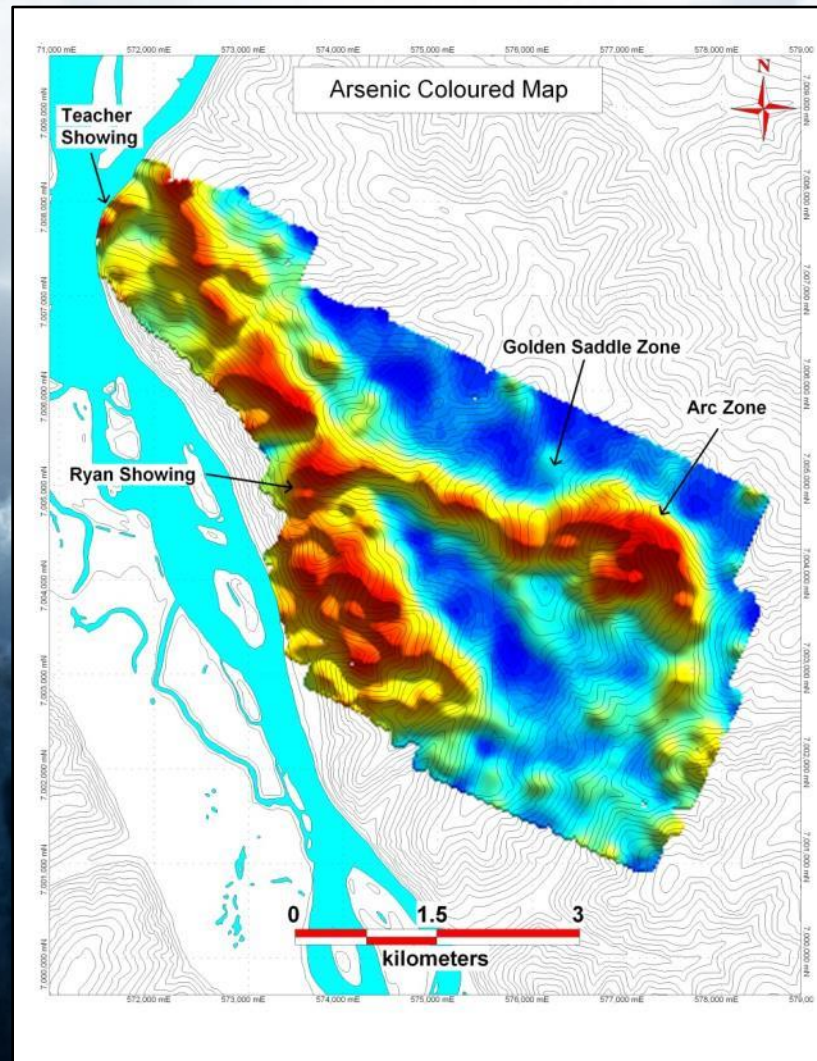
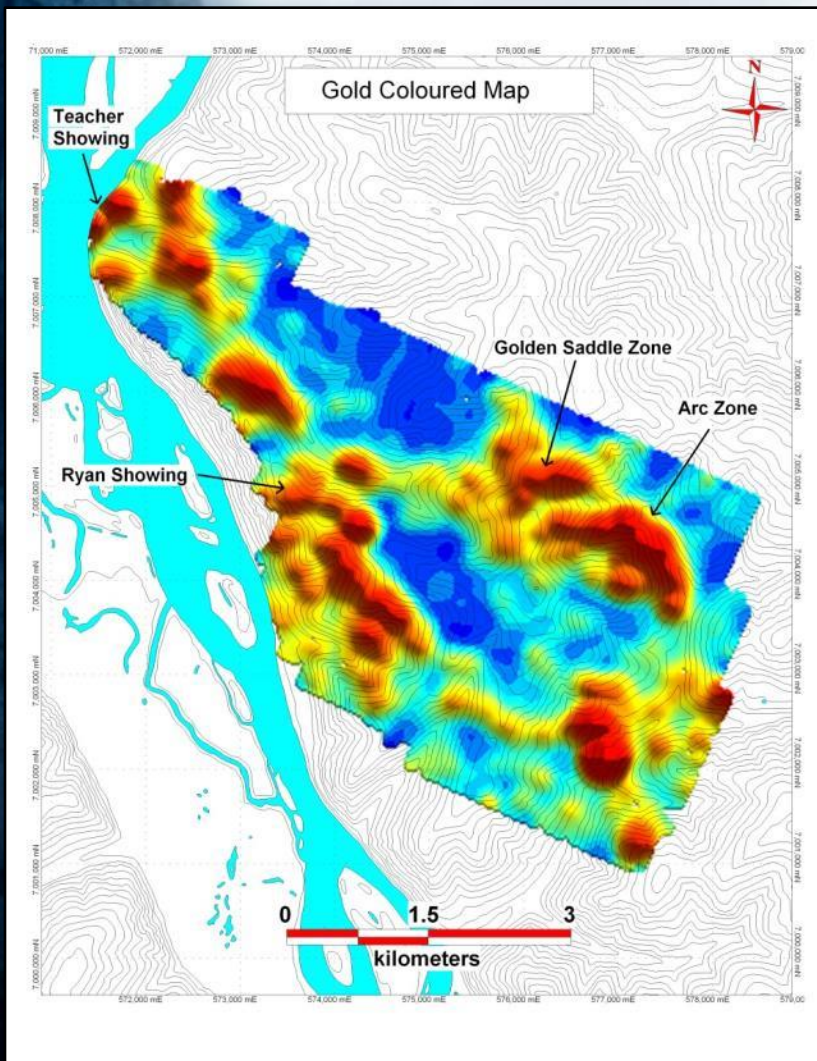


- 28 core holes drilled
- Discovery; Hole 4 at Golden Saddle, 4.35 g/t Au over 18.1m from 14.5m

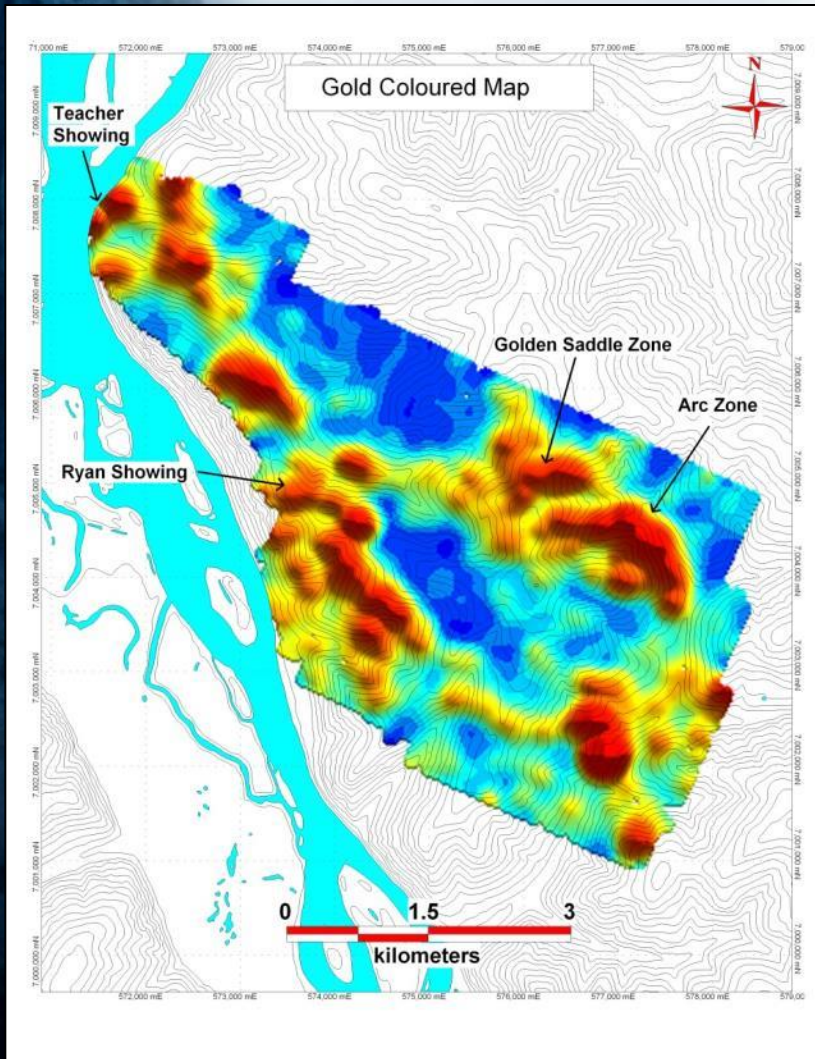
- Discovery; Hole 14 at Arc, 1.2 g/t Au over 28.5m from 6m
- 9 of the 12 holes at Golden Saddle cut mineralisation including Hole 21, 3.1 g/t Au over 50.7m from 100m

Gold

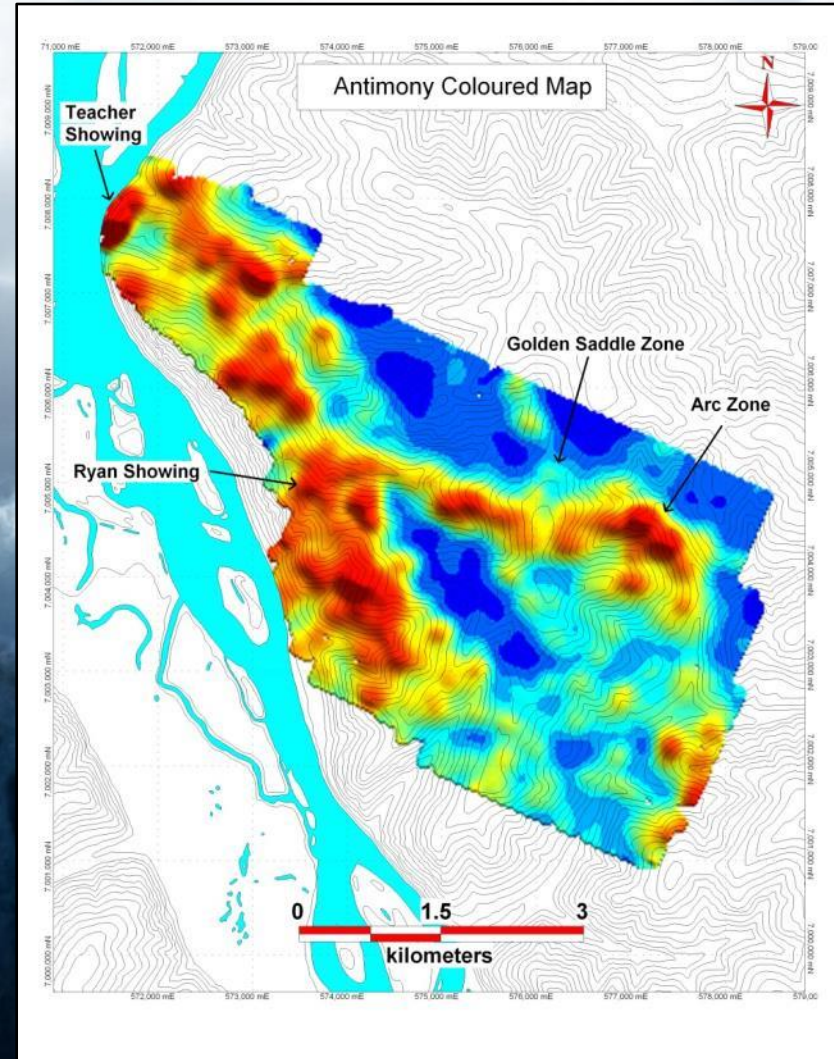
Arsenic



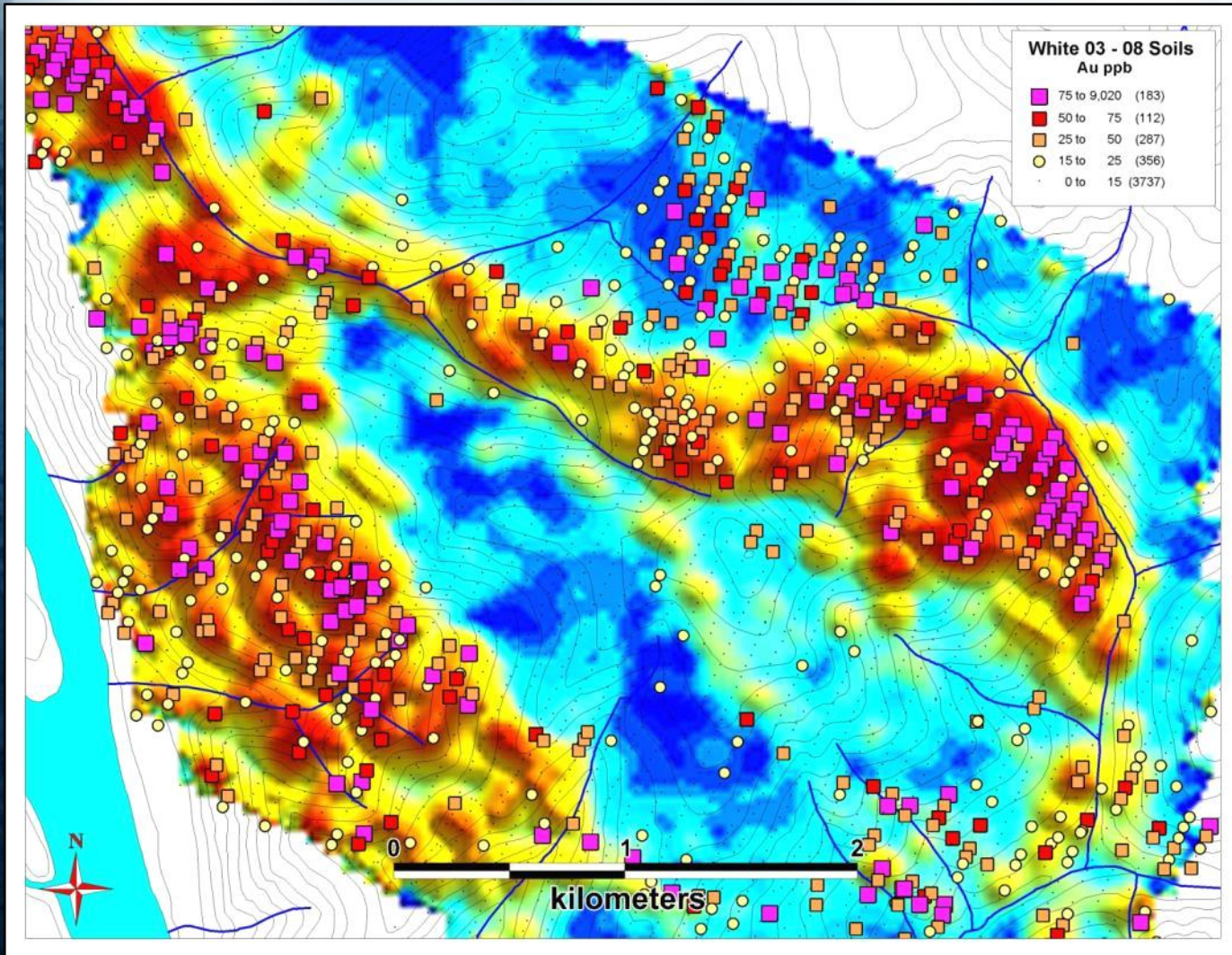
Gold



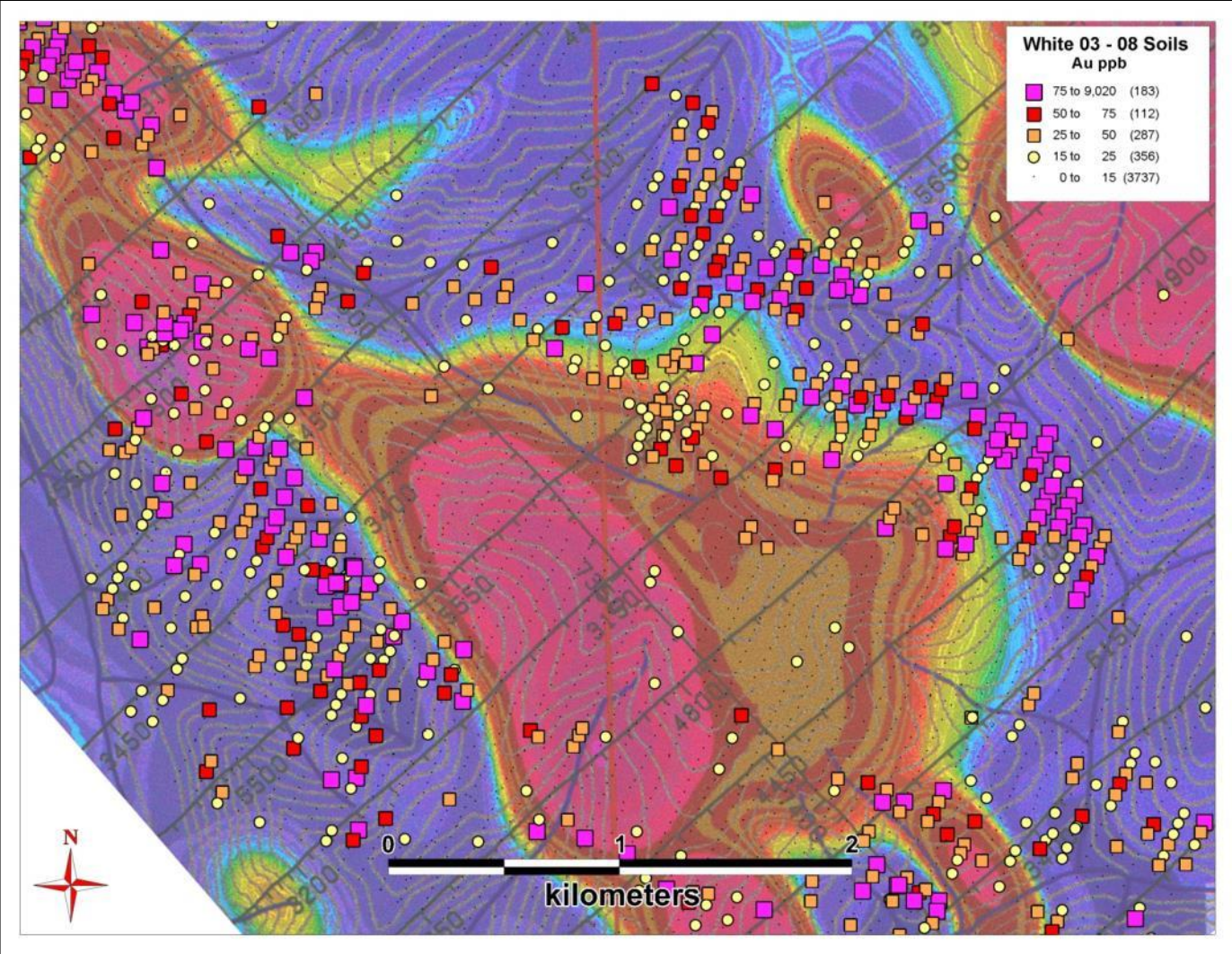
Antimony



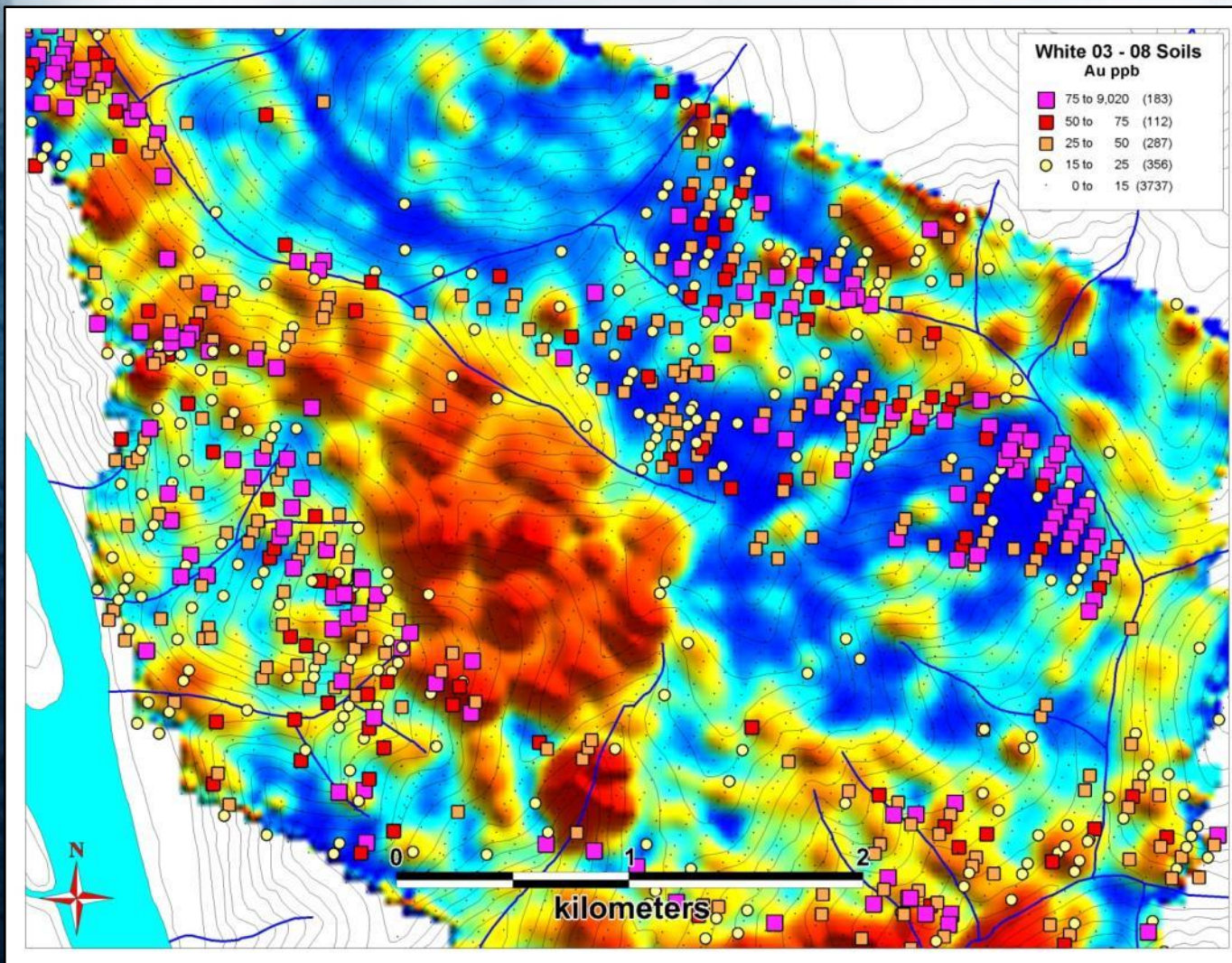
Gold over arsenic background



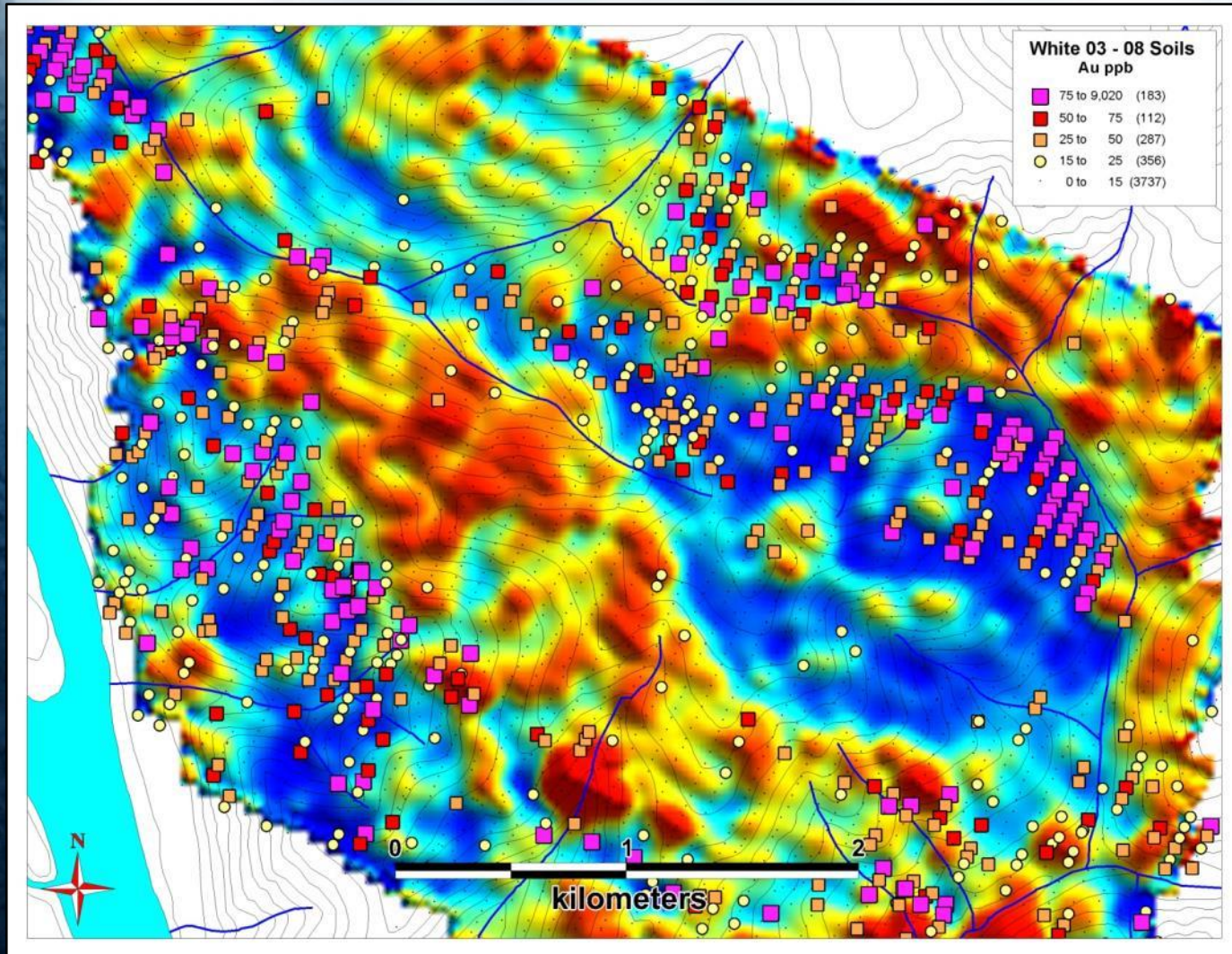
Gold over GSC Gradient Mag



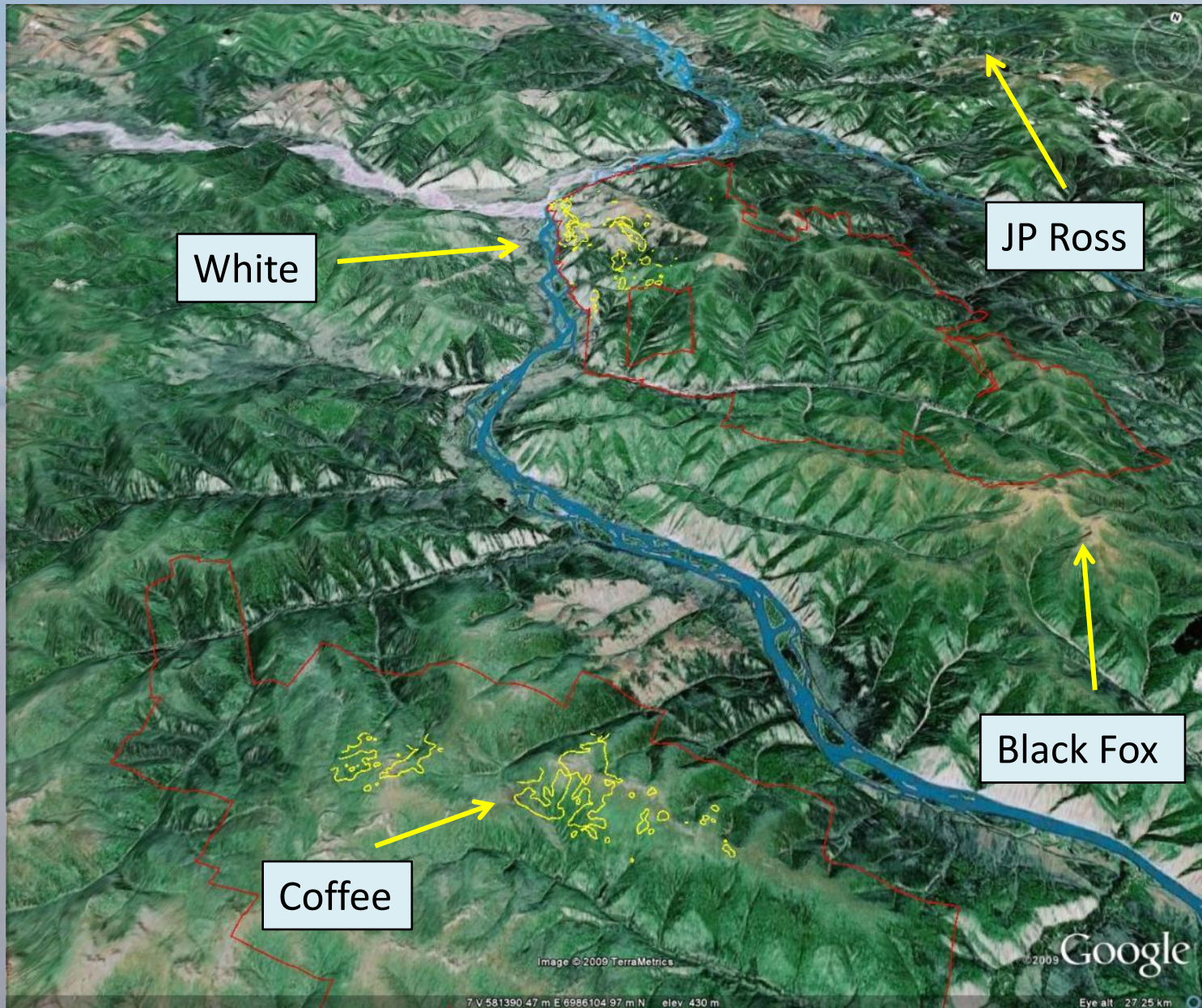
Gold over Nickel Map



Gold over Magnesium



When You Find One There Might be More

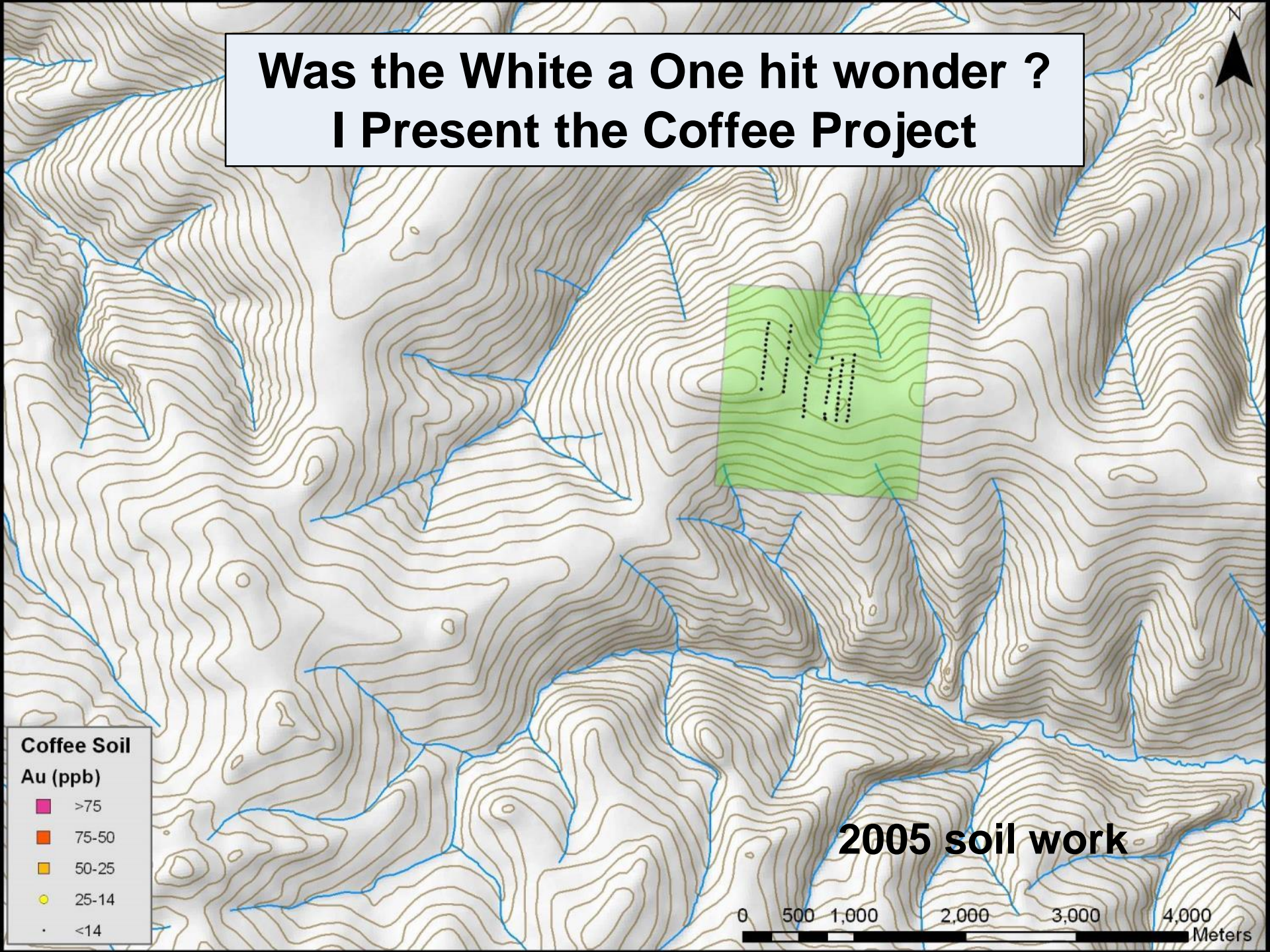


Coffee Project

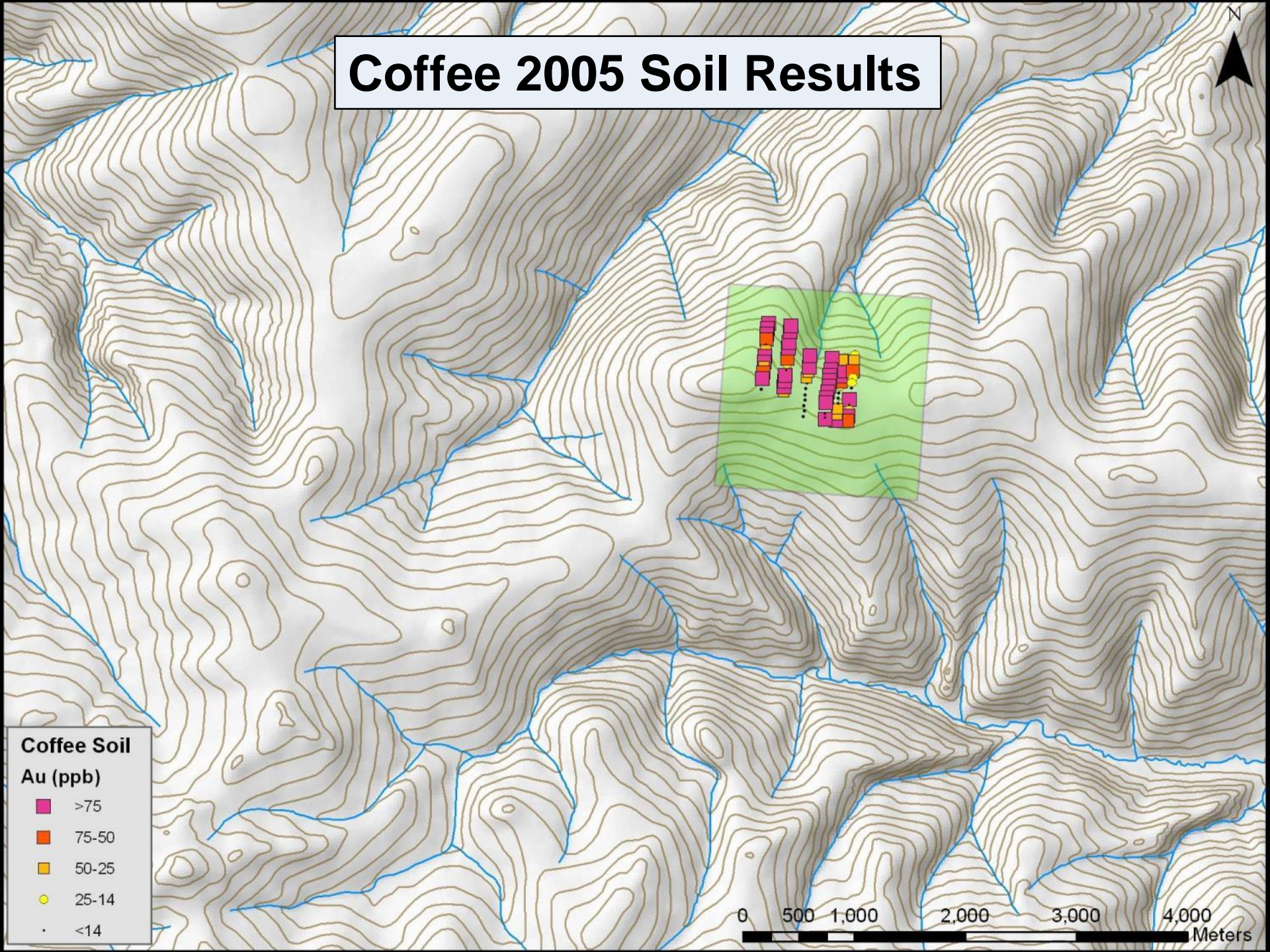
2009 Field Program



Was the White a One hit wonder ? I Present the Coffee Project





Coffee 2005 Soil Results

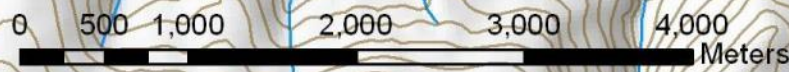


Coffee 2006 Soil Survey

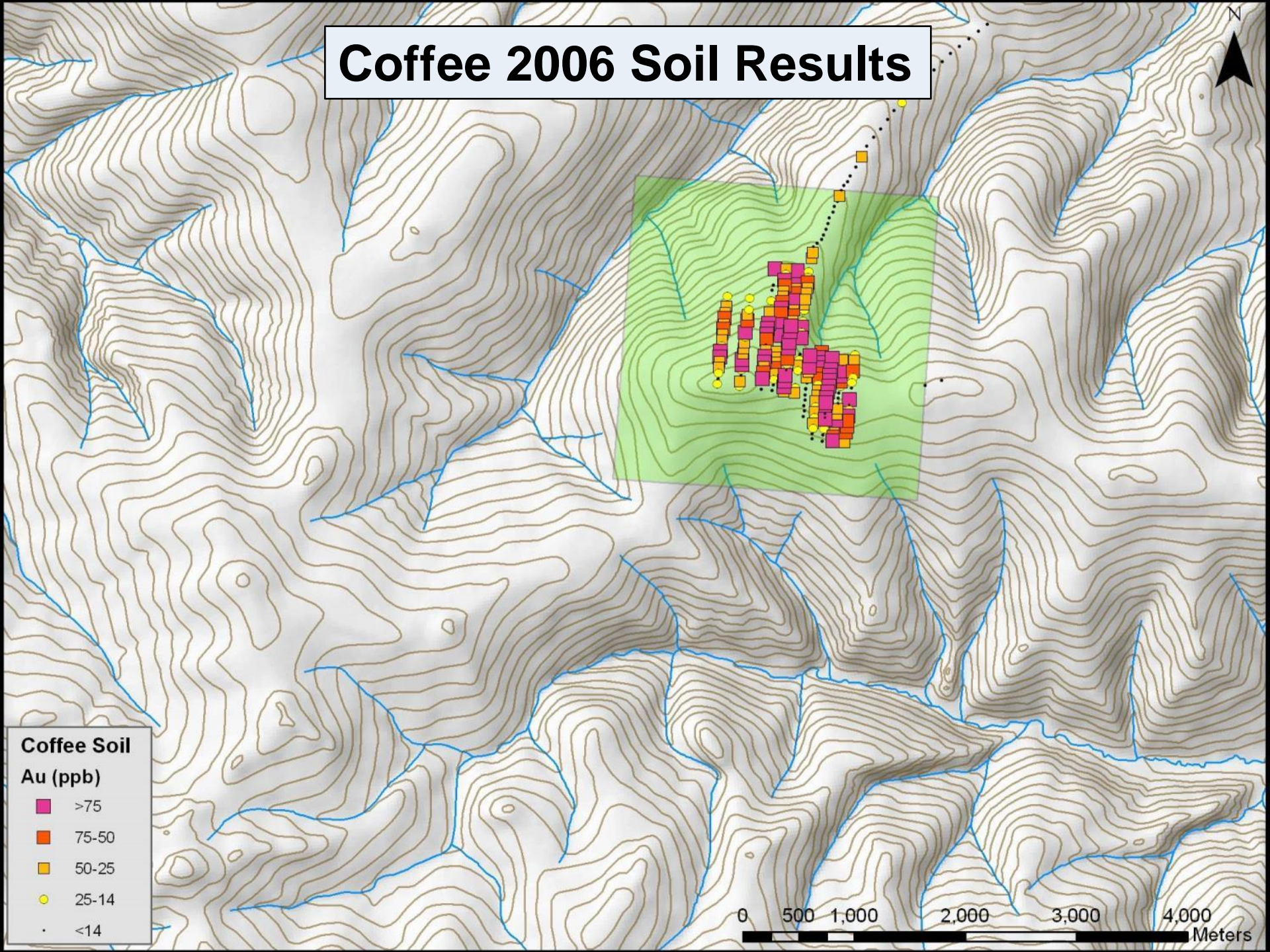


Coffee Soil
Au (ppb)

	>75
	75-50
	50-25
	25-14
	<14



Coffee 2006 Soil Results



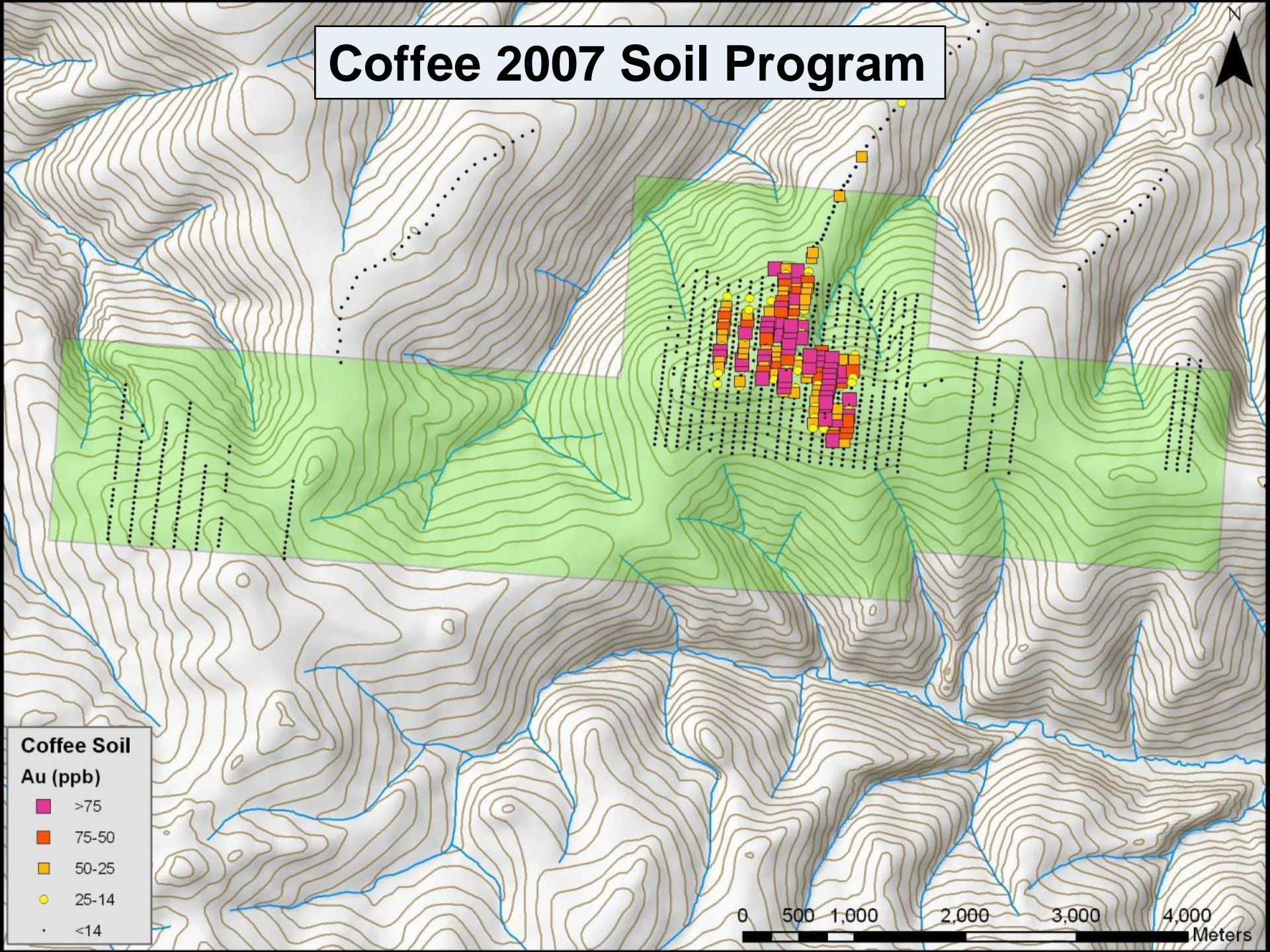
Coffee Soil

Au (ppb)

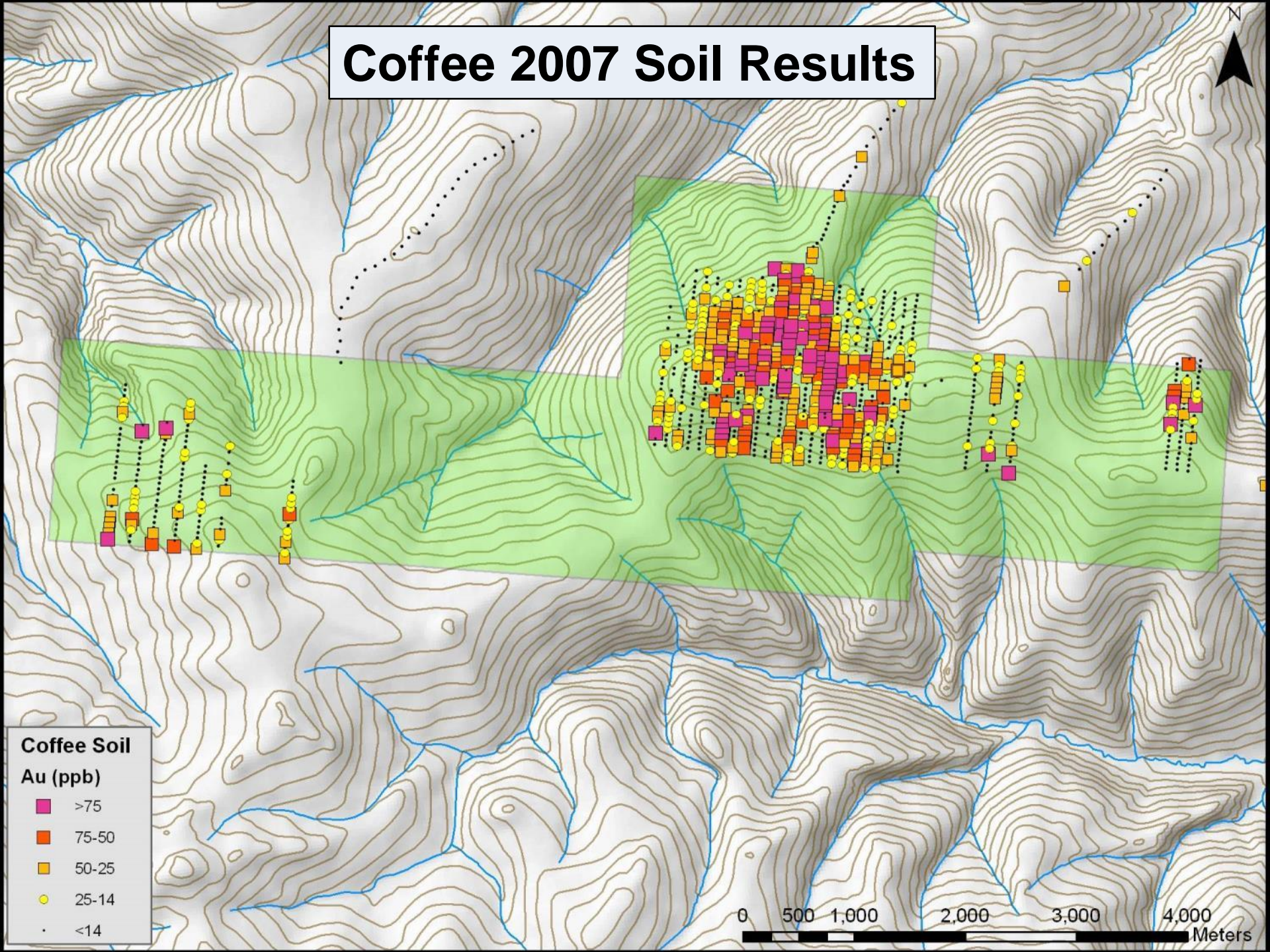
- >75
- 75-50
- 50-25
- 25-14
- <14

0 500 1,000 2,000 3,000 4,000 Meters

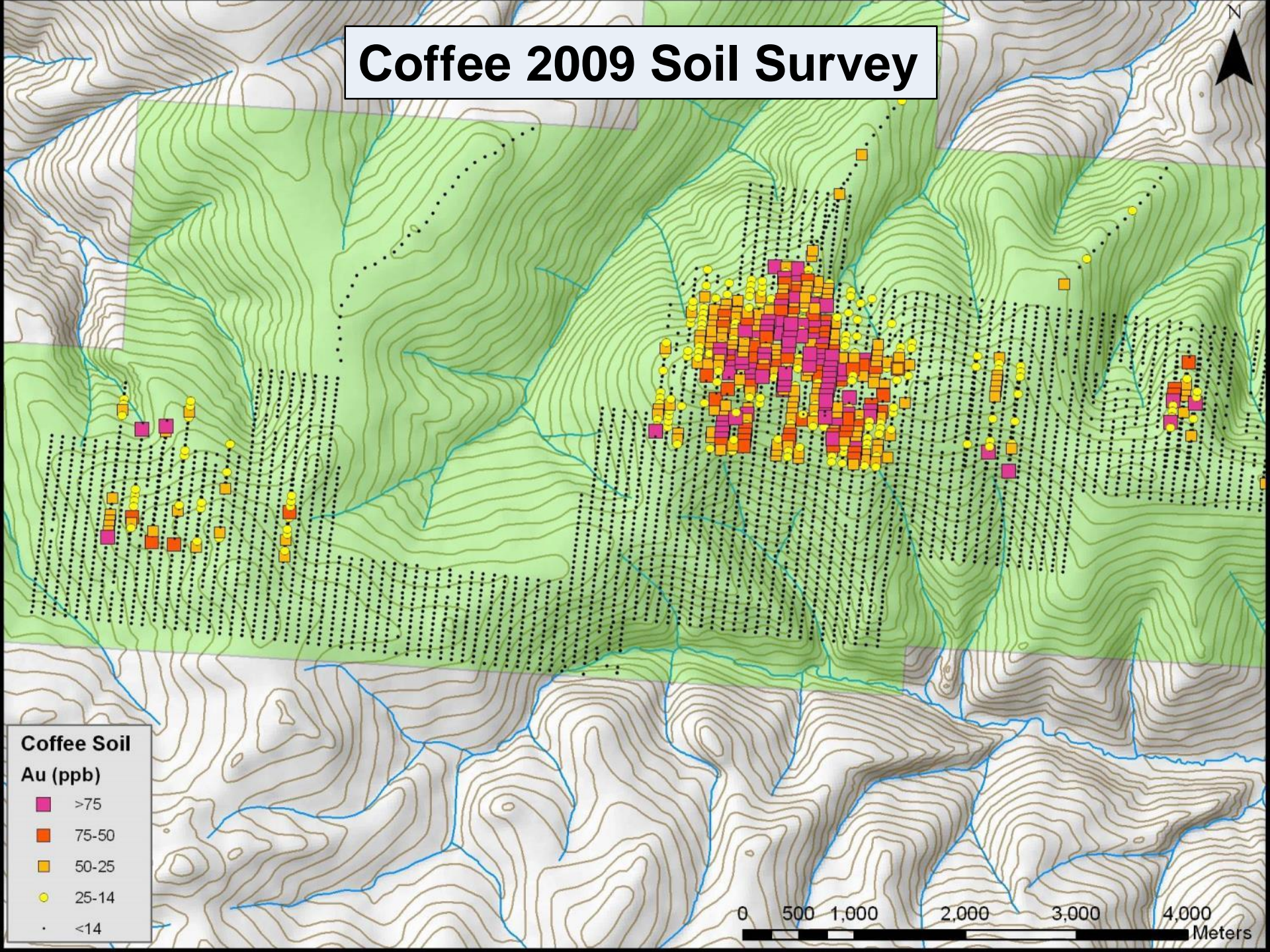
Coffee 2007 Soil Program



Coffee 2007 Soil Results

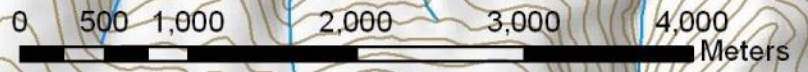


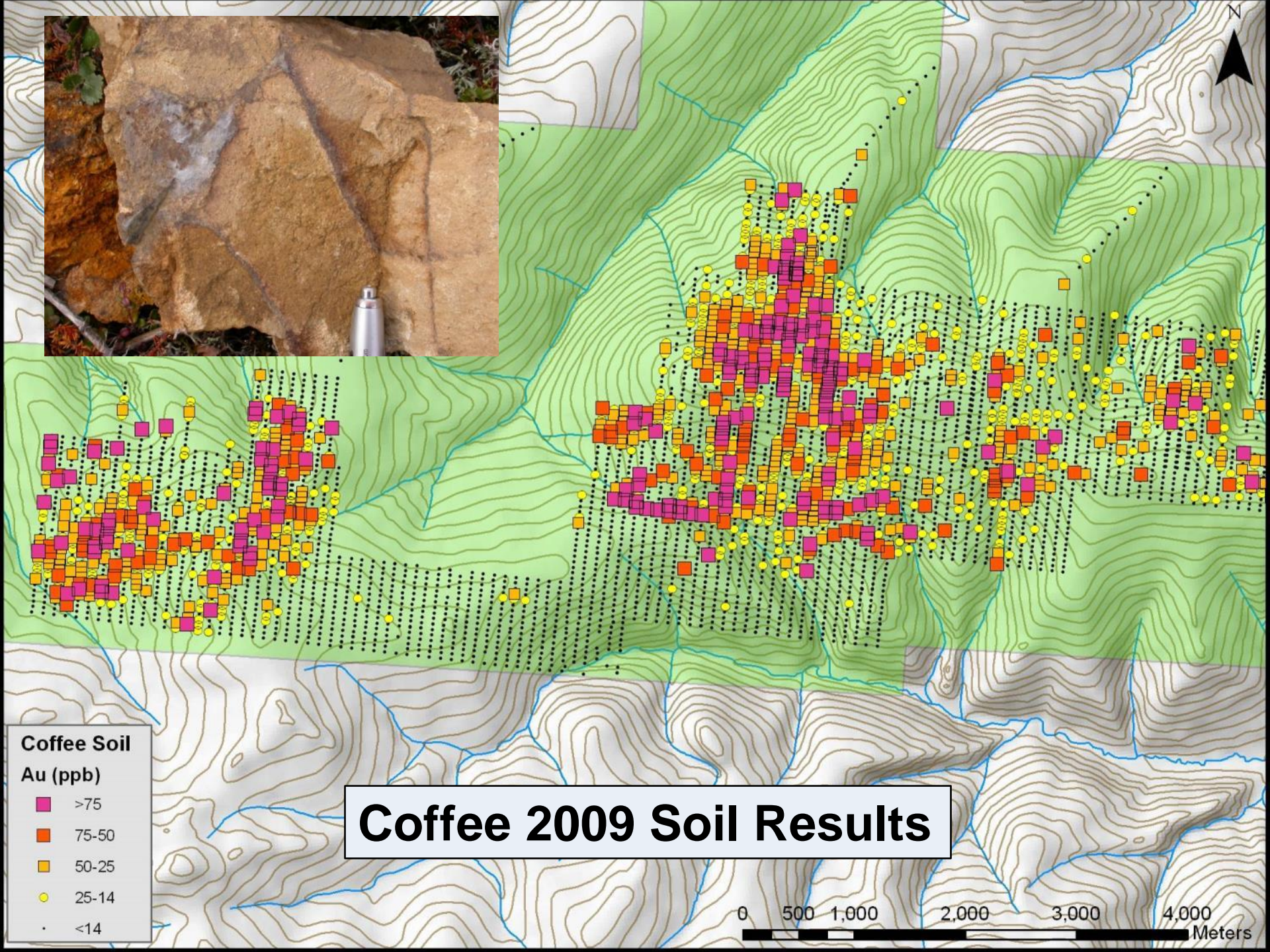
Coffee 2009 Soil Survey



Coffee Soil
Au (ppb)

- >75
- 75-50
- 50-25
- 25-14
- <14





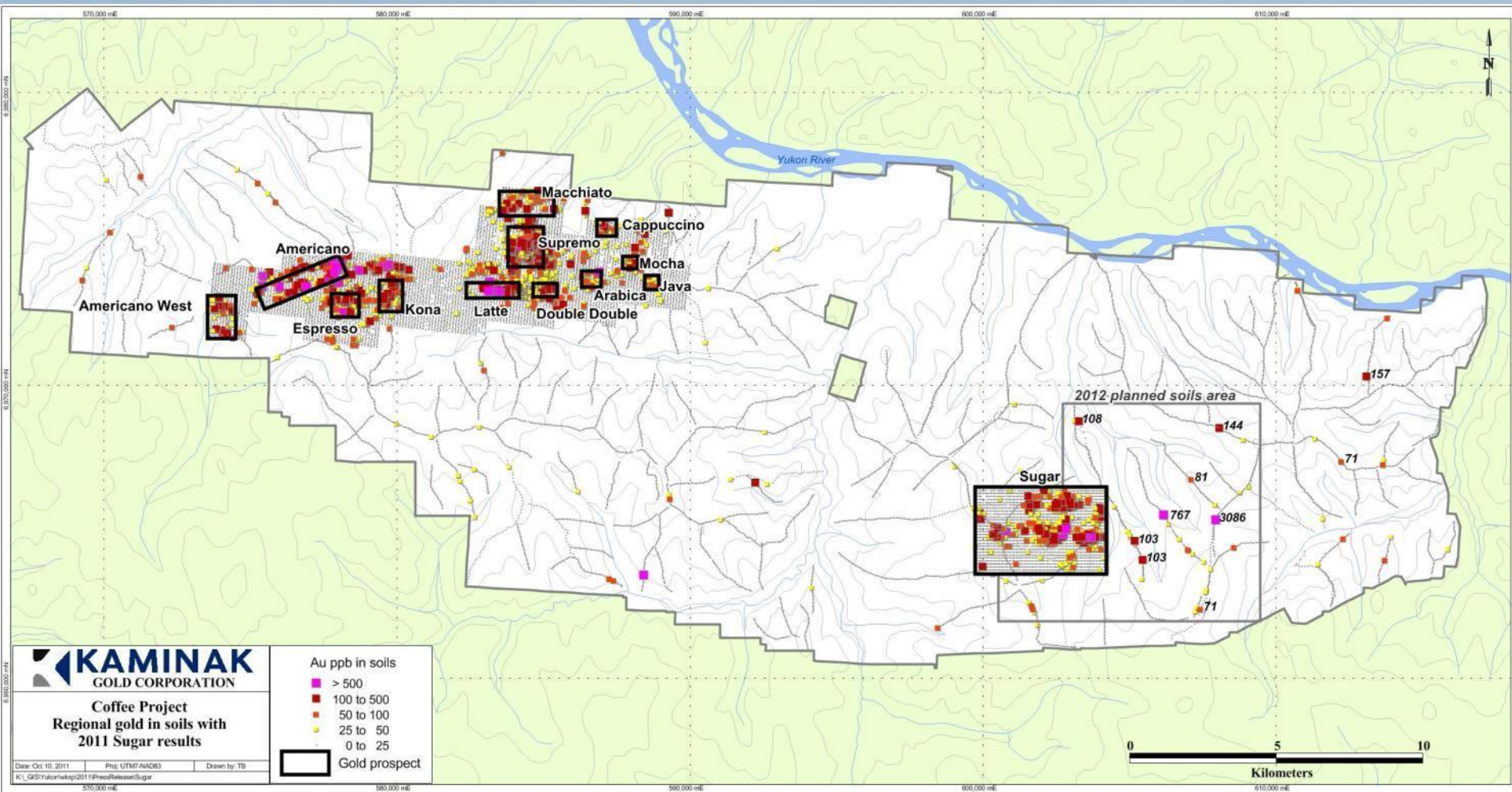
Coffee Soil
Au (ppb)

■	>75
■	75-50
■	50-25
●	25-14
·	<14

Coffee 2009 Soil Results

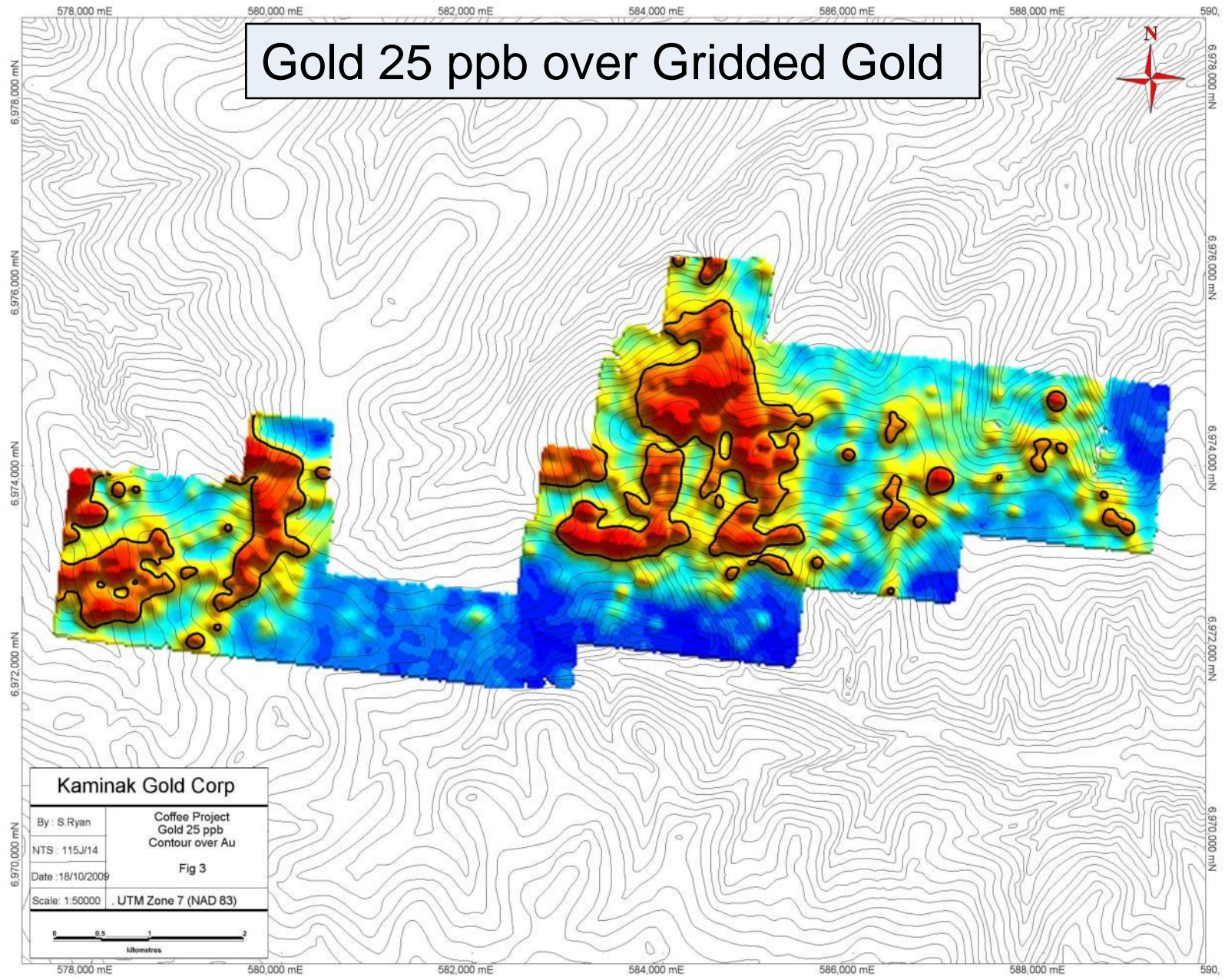
0 500 1,000 2,000 3,000 4,000 Meters

Coffee Property

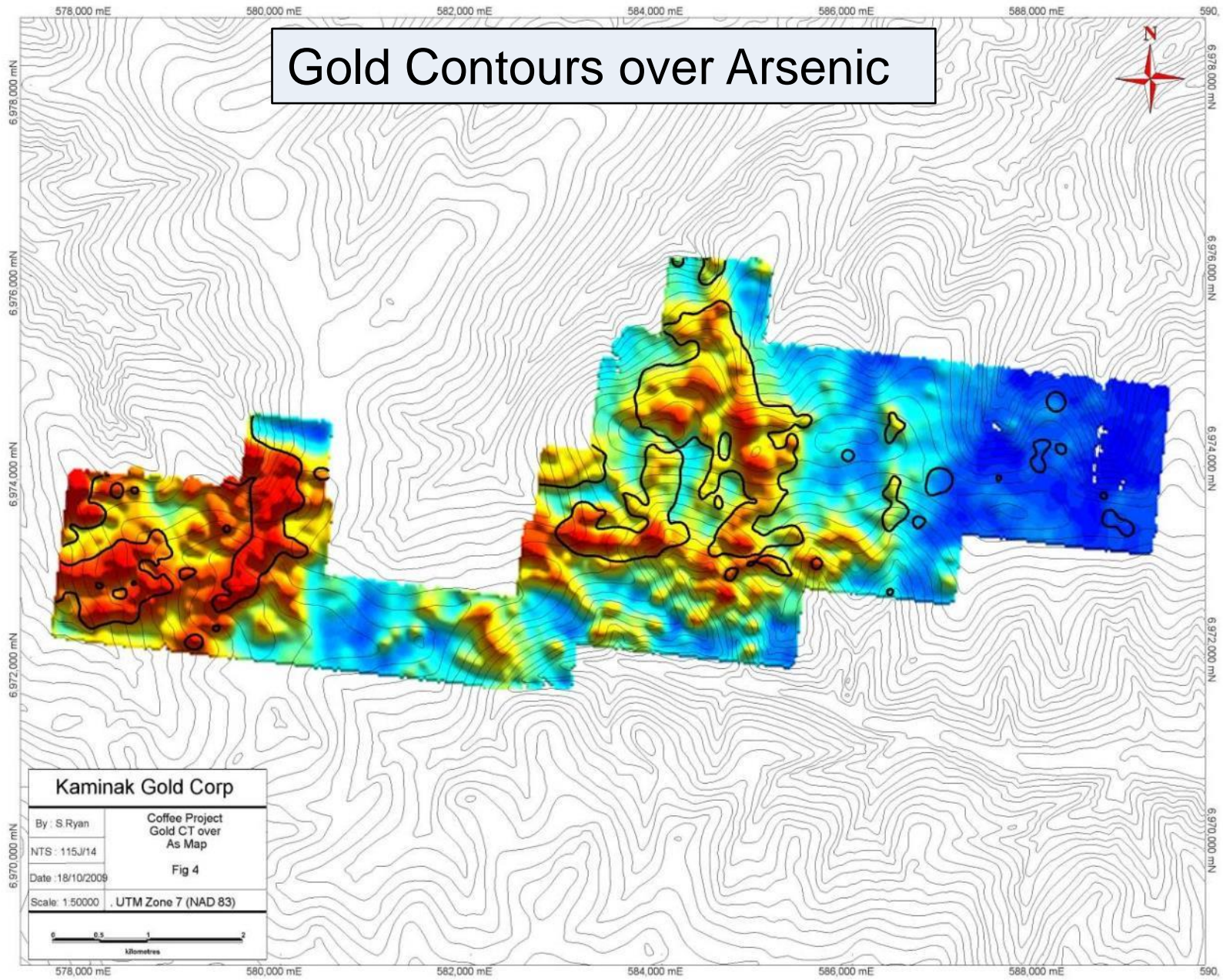


**Coffee Property from 16 claims to more than 4000 Claims
All based on Soil Sampling**

Gold 25 ppb over Gridded Gold

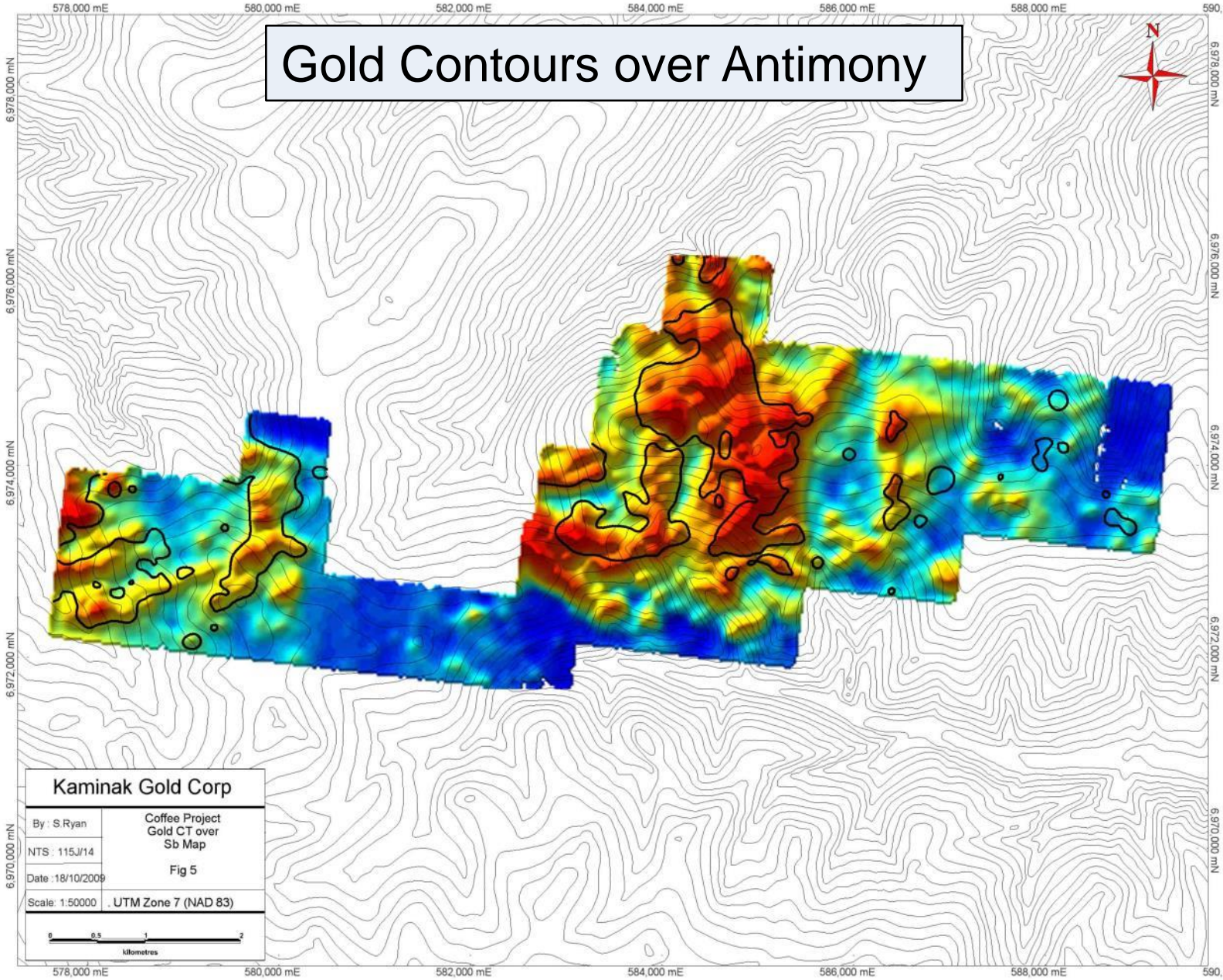


Gold Contours over Arsenic



Kaminak Gold Corp	
By : S.Ryan	Coffee Project Gold CT over As Map
NTS : 115/J/14	Fig 4
Date :18/10/2009	
Scale : 1:50000	UTM Zone 7 (NAD 83)

Gold Contours over Antimony



Kaminak Gold Corp	
By : S.Ryan	Coffee Project Gold CT over Sb Map
NTS : 115J/14	Fig 5
Date : 18/10/2009	
Scale : 1:50000	UTM Zone 7 (NAD 83)

Gold Contours over Uranium

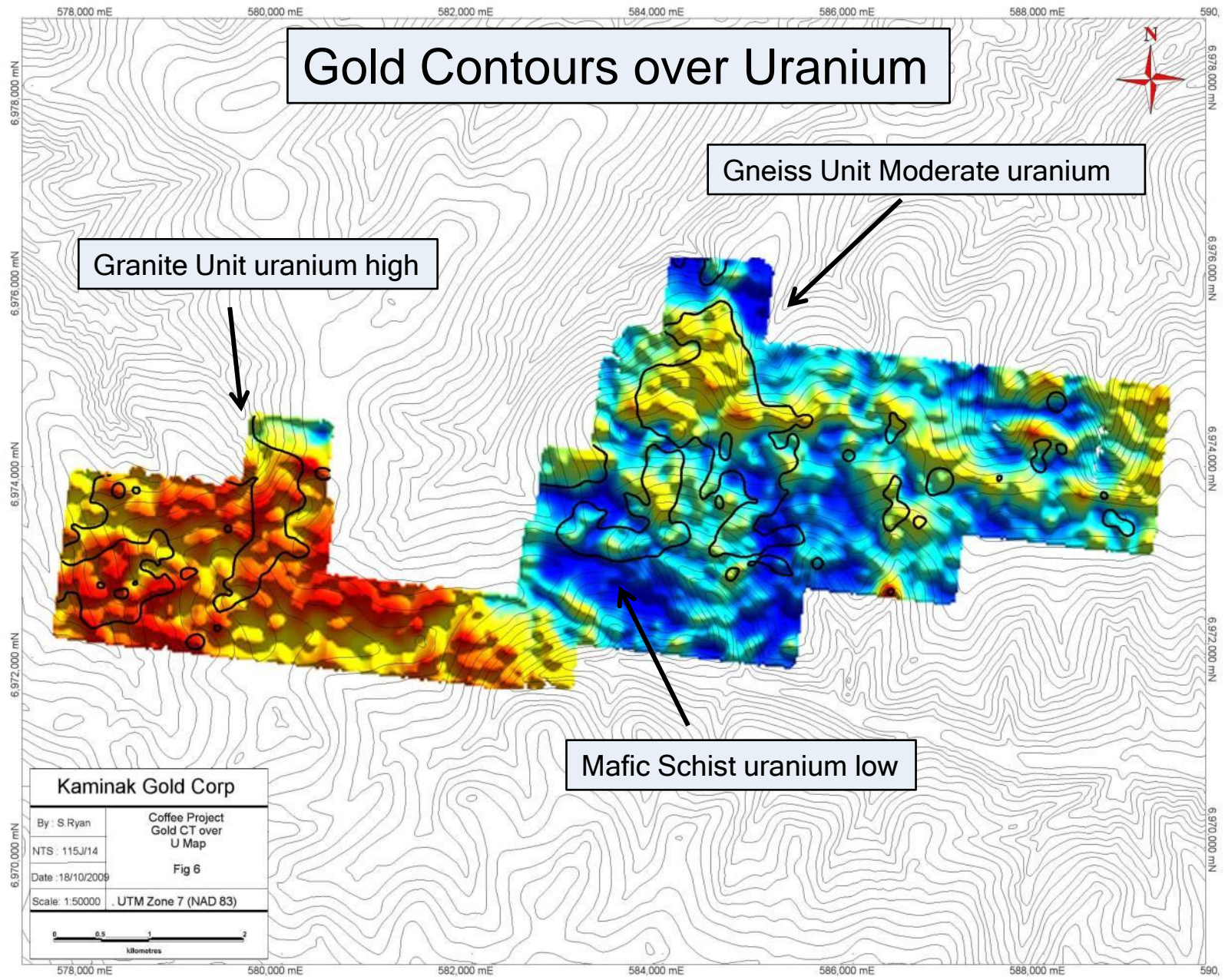


Granite Unit uranium high

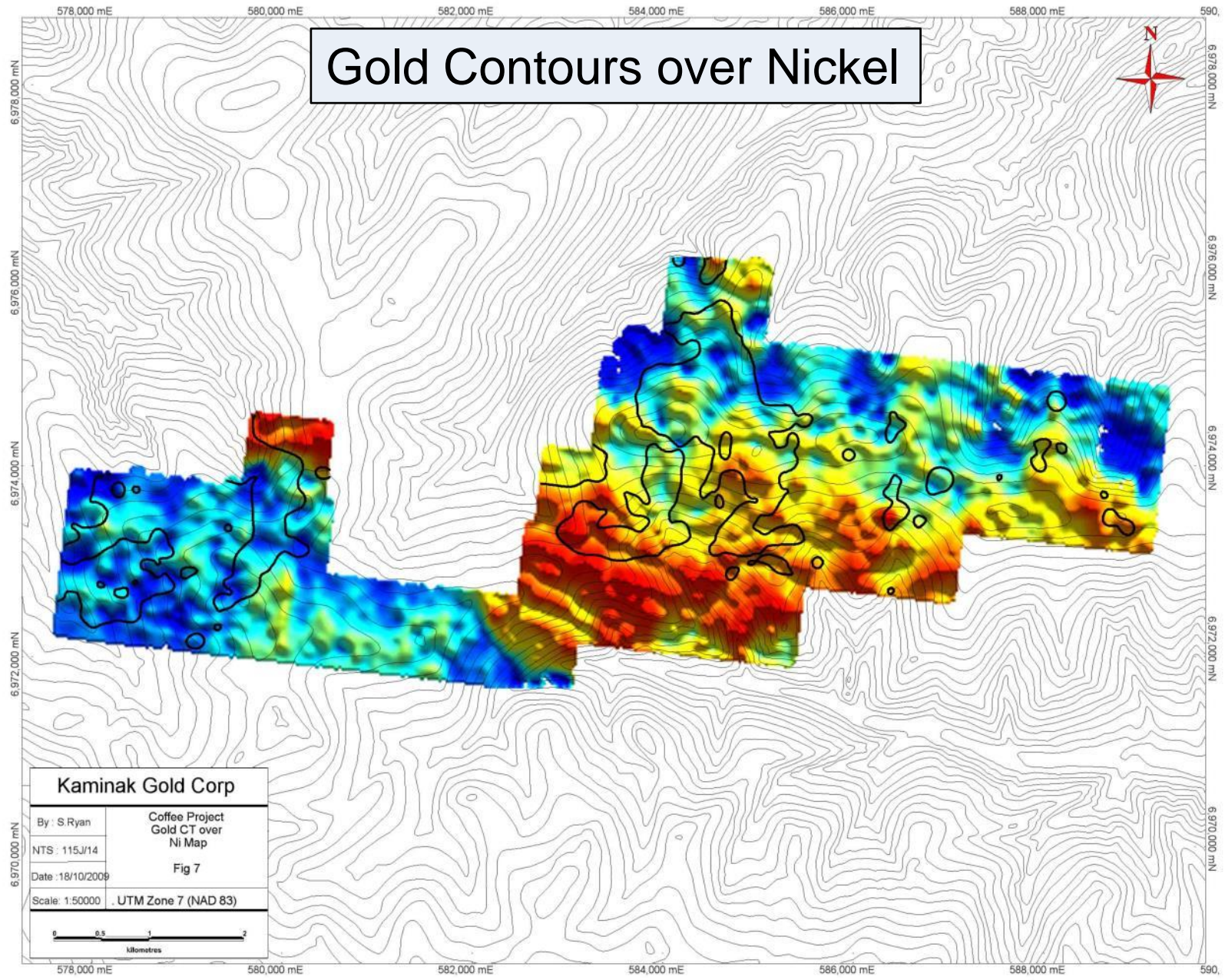
Gneiss Unit Moderate uranium

Mafic Schist uranium low

Kaminak Gold Corp	
By : S.Ryan	Coffee Project Gold CT over U Map
NTS : 115J/14	Fig 6
Date : 18/10/2009	
Scale : 1:50000	UTM Zone 7 (NAD 83)

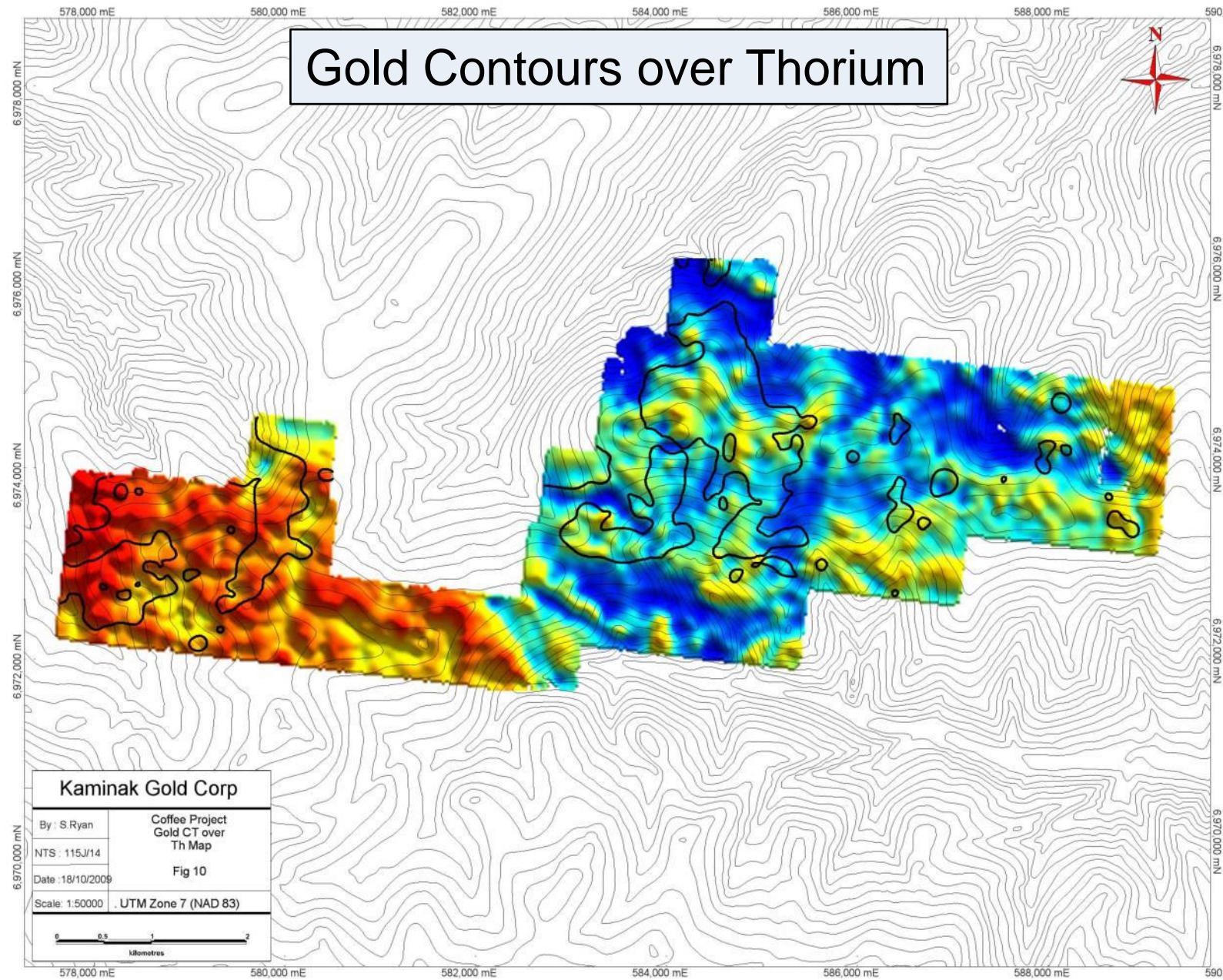


Gold Contours over Nickel

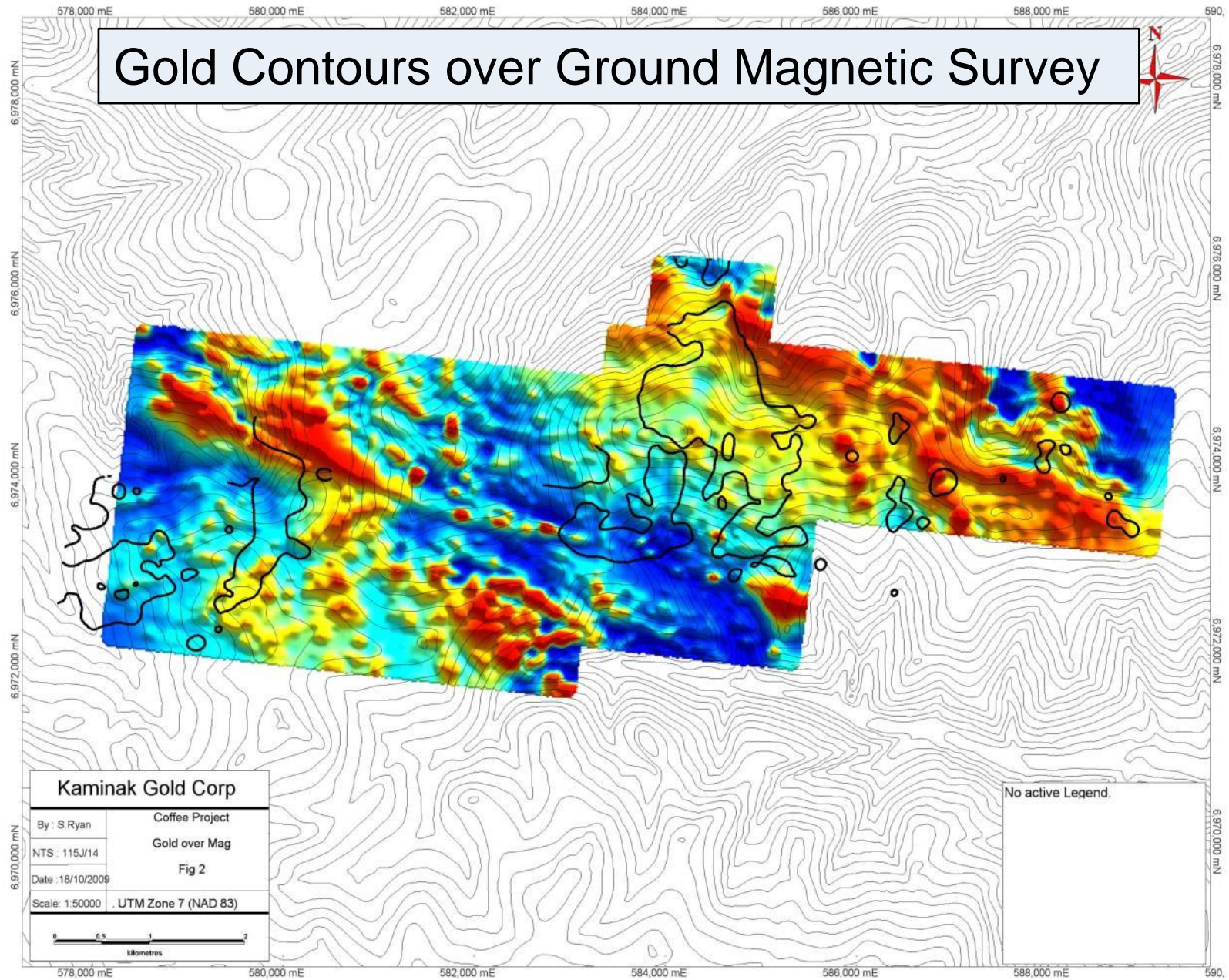


Kaminak Gold Corp	
By : S.Ryan	Coffee Project Gold CT over Ni Map
NTS : 115J/14	Fig 7
Date : 18/10/2009	
Scale : 1:50000	UTM Zone 7 (NAD 83)

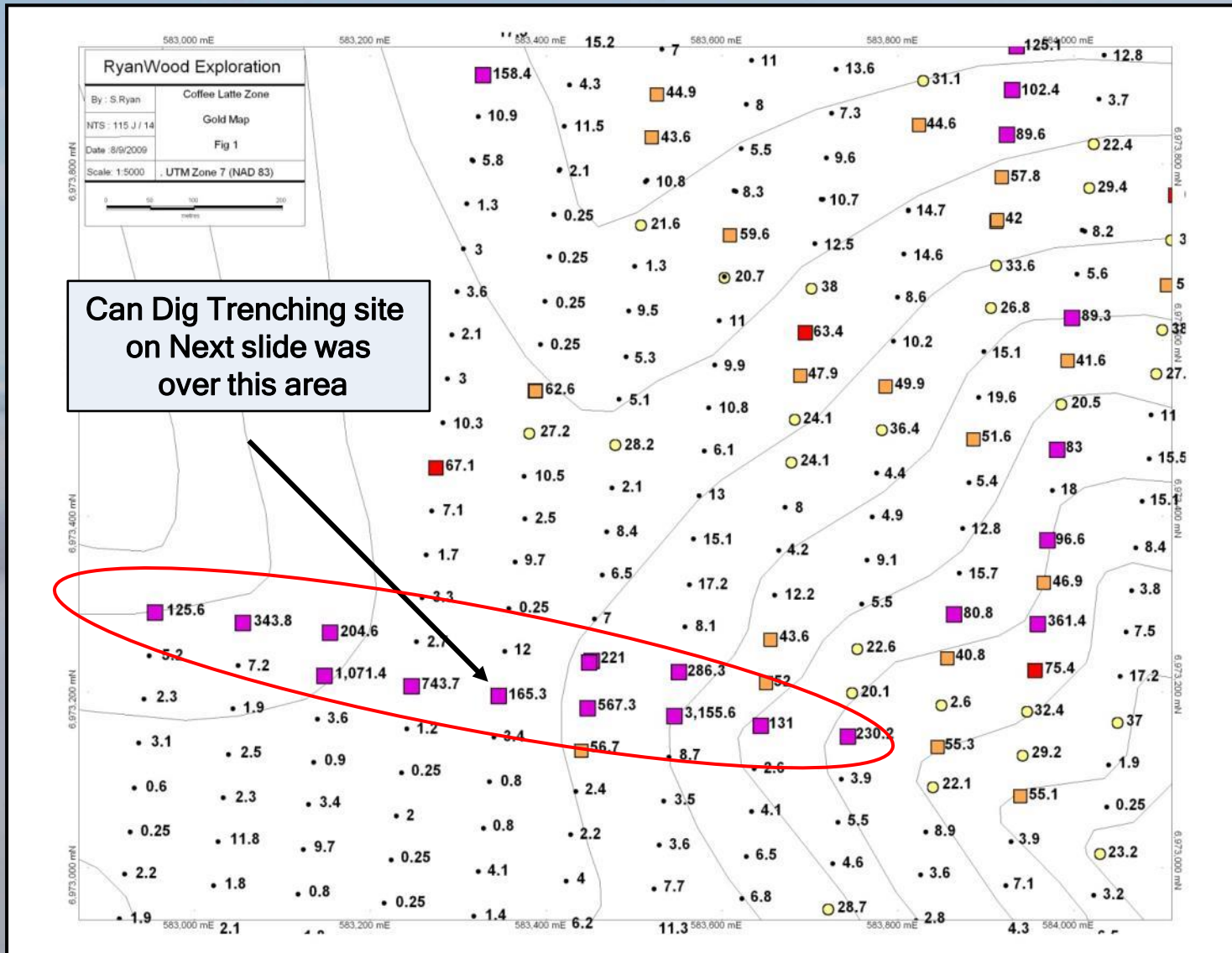
Gold Contours over Thorium



Gold Contours over Ground Magnetic Survey



Latte Gold Zone a One Station wonder



The Latte Gold Zone is sitting at more than million ounce Gold

Latte Gold Zone a One Station wonder



Supremo Gold Zone



2.3 g/t Au over 21m

Supremo Gold Zone

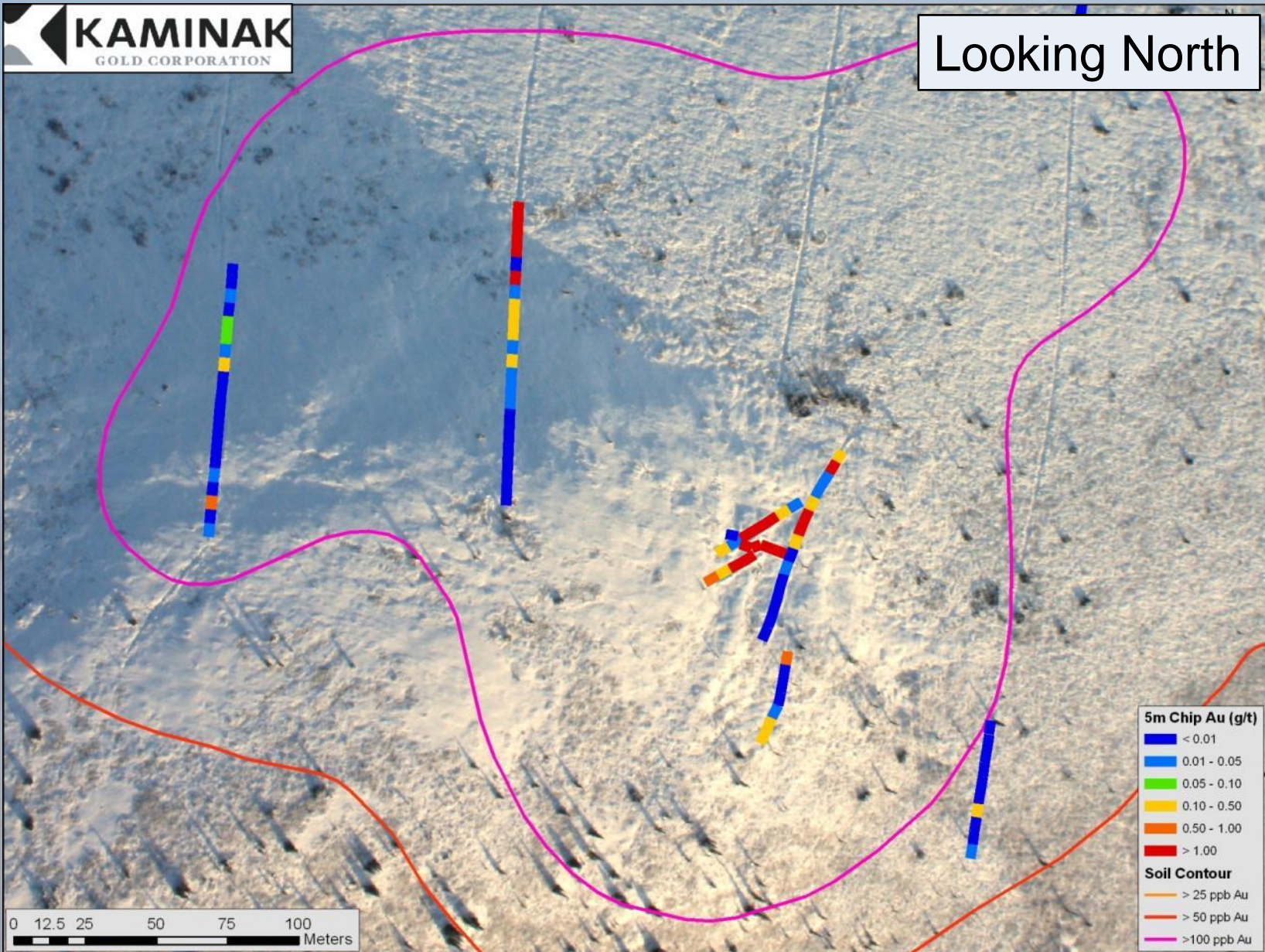


Looking South

Supremo Gold Zone

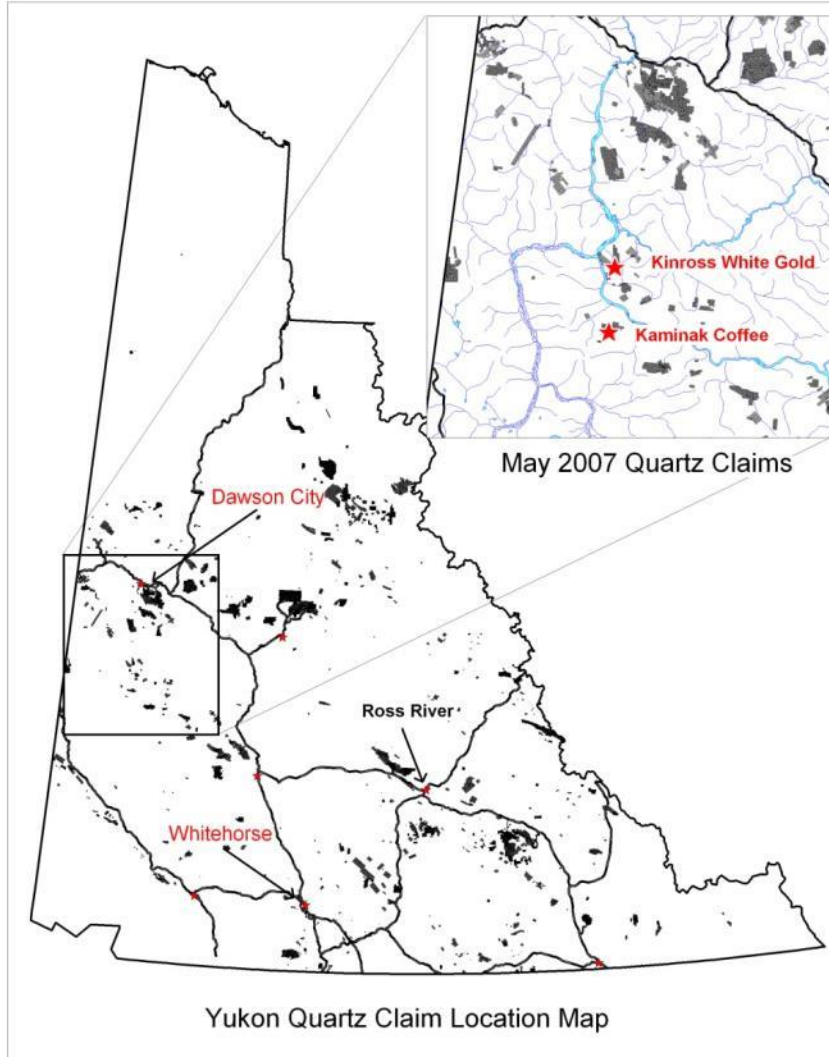


Looking North

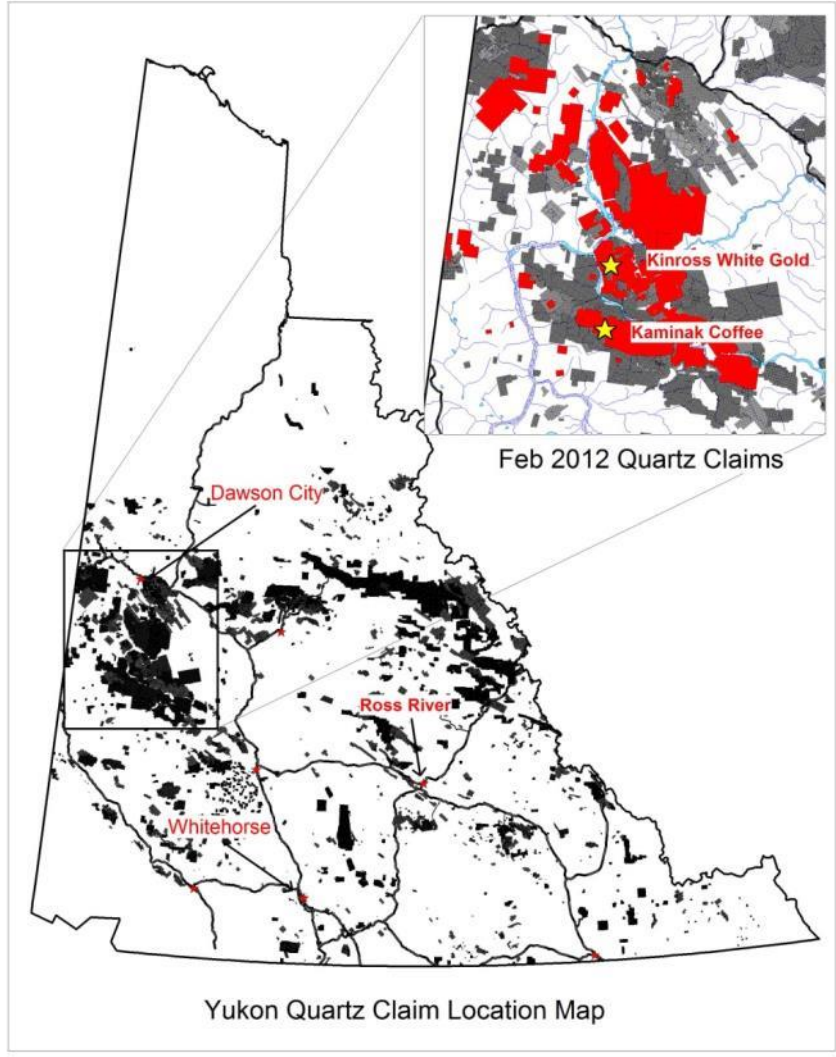




White Gold District Claim Location Map



May 2007



February 2012