

CLAIM STAKING, LICENSE MANAGEMENT AND ASSESSMENT REPORTING

MINERAL RIGHTS LEGISLATION

- Mineral Act
- Mineral Regulations

DEFINITION OF MINERAL

“mineral” means a naturally occurring inorganic substance including coal and minerals contained in mine tailings, but does not include:

- water
- quarry materials as defined in the ***Quarry Materials Act***,
- stratified deposits other than coal from which oil can be extracted by destructive distillation, or
- petroleum as defined in the ***Petroleum and Natural Gas Act***

CLAIM STAKING

TO STAKE A CLAIM

- You must be a corporation or at least 19 years of age
- You must stake online – Internet Explorer and Netscape web browsers; payable by credit card (Visa / Mastercard) only
- You must be registered with the Mineral Lands Division of the Department of Natural Resources (no cost)
- For help, contact the [claims recorder](#) (709 729 6437)

TO STAKE A CLAIM (CNT'D)

- Claims are 500 m on a side and are staked on a pre-determined grid
- Claims are staked in blocks (called licenses) ranging from 1 to a maximum of 256 contiguous units. There are no restrictions on shape of the license
- Staking costs include a \$10 recording fee and a \$50 refundable security deposit
- A Genuine Prospector can stake up to 30 claims per year without paying the security

MINERAL LICENSE

- Is issued 30 days after staking
- Gives the holder the exclusive right to explore but not to mine (mining and surface leases are required)
- Is issued for a 5 year term but can be renewed every 5 years for a maximum of 20 years – work is required to be completed, reported and accepted annually

LICENSE MANAGEMENT

MINERAL LICENSE MAINTENANCE

- Yearly exploration must be completed and an 'assessment report' describing the work must be filed and accepted
- Reports are held confidential for three years provided the mineral license is in good standing
- Extensions of time may be obtained both to perform work and file assessment reports
- A mineral license may be reduced in size or split into two or more smaller licenses
- Two or more mineral licenses may be grouped under certain conditions

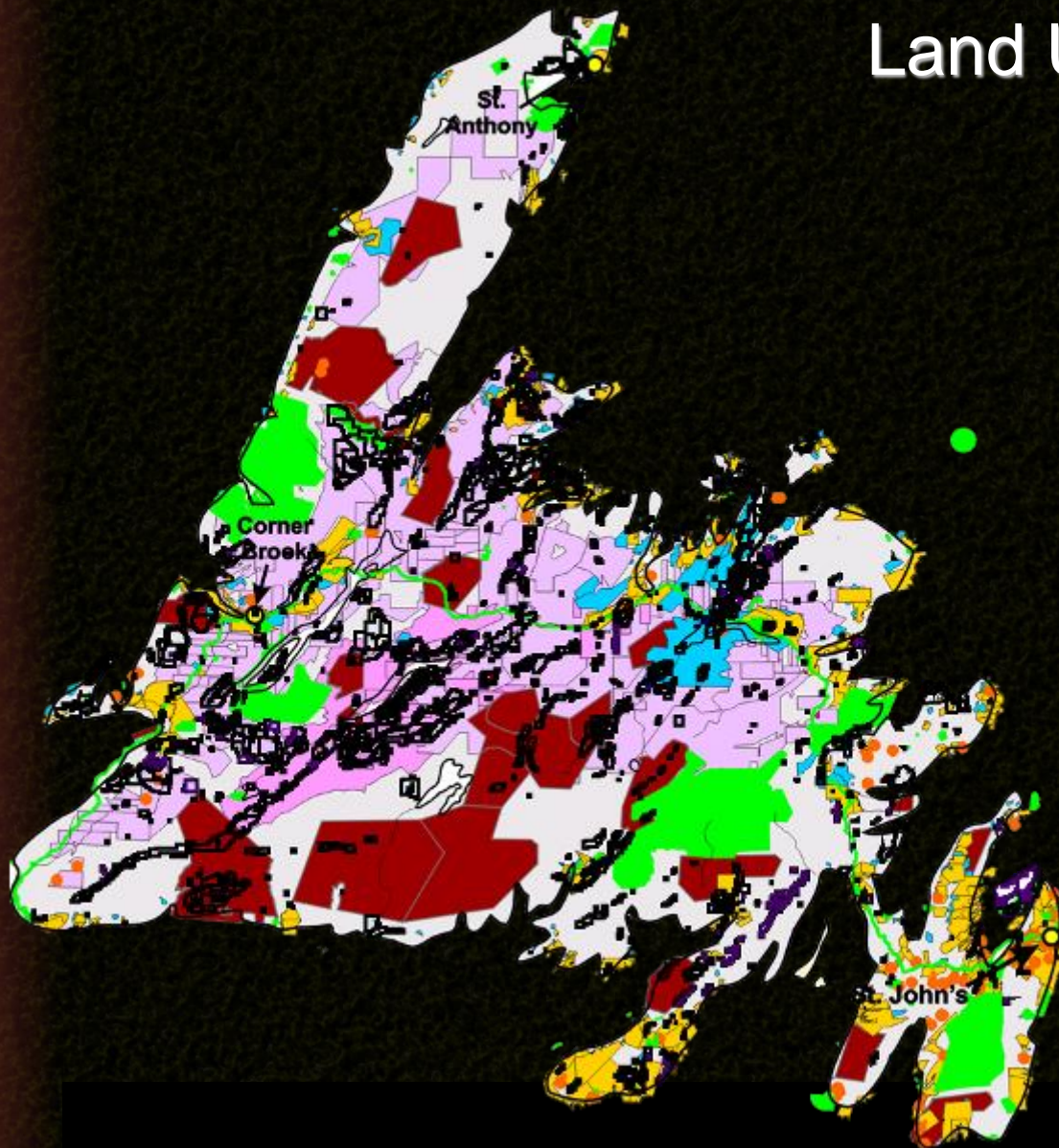
MINERAL EXPLORATION APPROVAL

- Mineral exploration approval is required before exploration work can be completed on a mineral license or mining lease
- To obtain approval, you must complete and submit a form available from the Natural Resources website at http://www.nr.gov.nl.ca/nr/forms/mines/expl_approval.pdf
- For help contact the [exploration approvals geologist](#) (709 729 6408)

Land Use Interests

Agencies:

- Forestry
- Wildlife
- Historic Resources
- Private Land
- Municipalities
- Outfitters
- Water Resources
- Parks
- Etc.



Assessment Reporting

Assessment Reports

- Assessment work to a minimum value must be conducted yearly to keep your claims in good standing
- An assessment report is submitted to the Department describing the work you have done on your license and the results obtained
- The report should be filed within 60 days of the anniversary of the license. A 60 day extension of time is possible
- Always send a **copy** of your report to the Department. Keep the original for your own files

What to Report

- All work should be reported – prospecting, sampling, trenching, and any site visits from exploration personnel
- The **most important** details are sample locations, assay results and expenditures
- You can also report time spent on file research and compilation - once per License
- A [sample assessment report](#) is found on the Department's website and can be used for reference
- Contact the [assessment report review geologist](#) for help (709 729 0573)

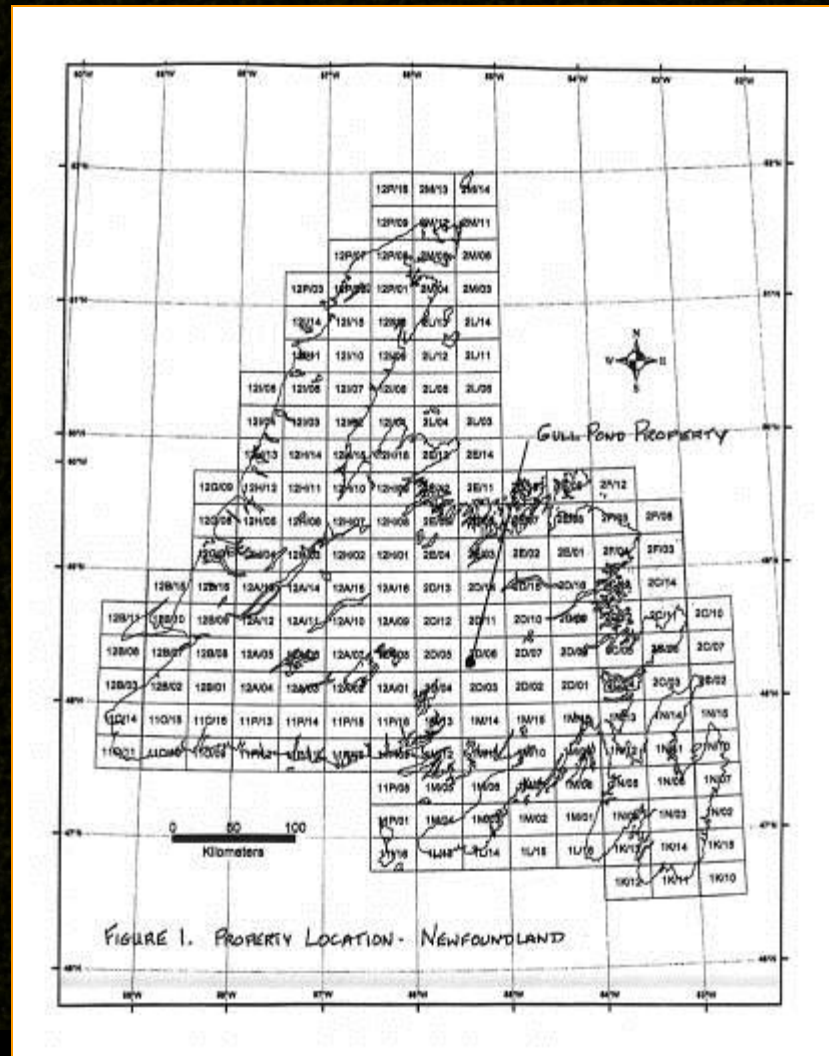
Maps

Three types of map are usually suggested:

- Property Location Map (regional scale)
- License Location Map (local scale)
- Sample Location Map (detailed scale)

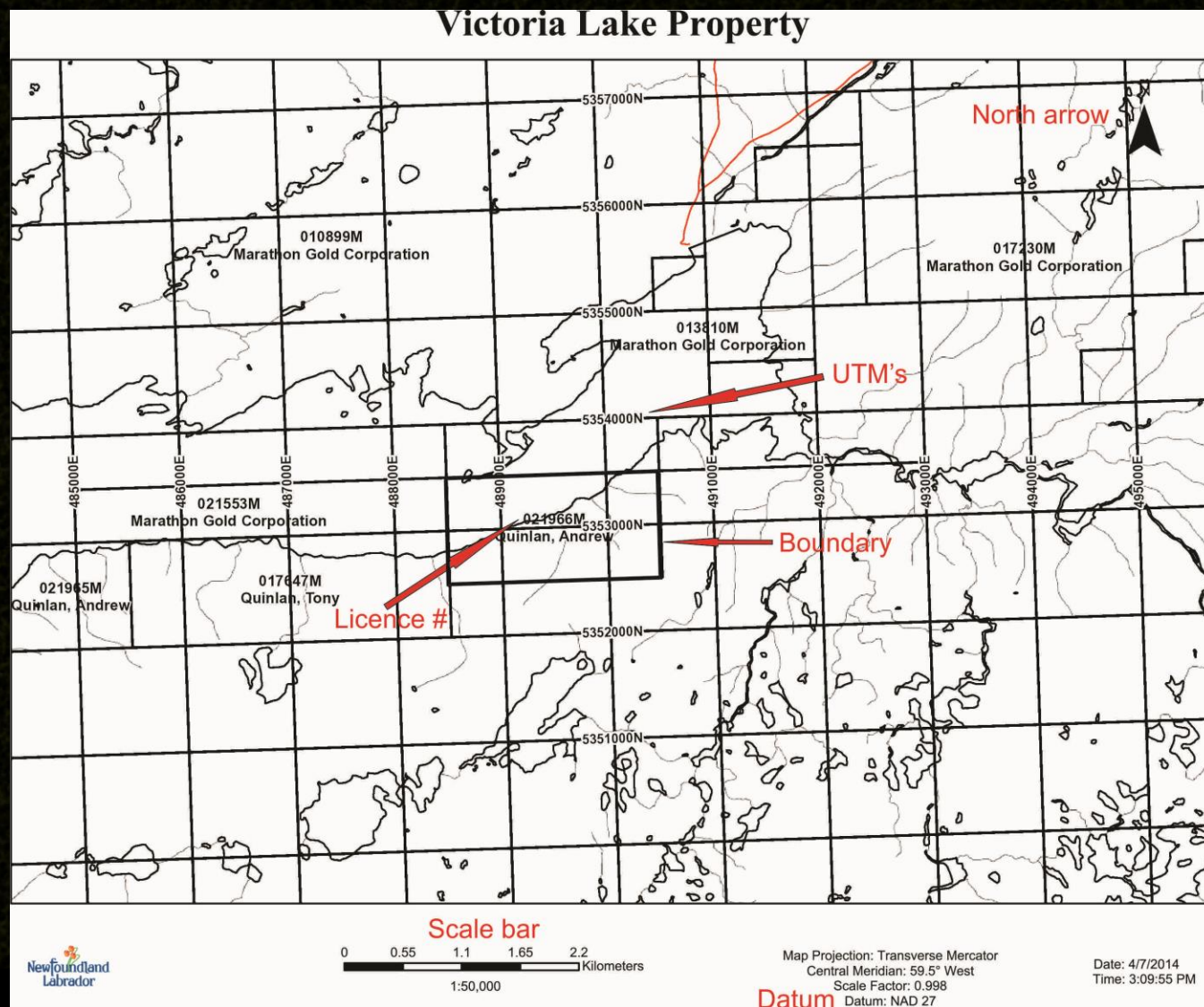
Shows the location of your property on a regional scale

Blank copies are available from the Department

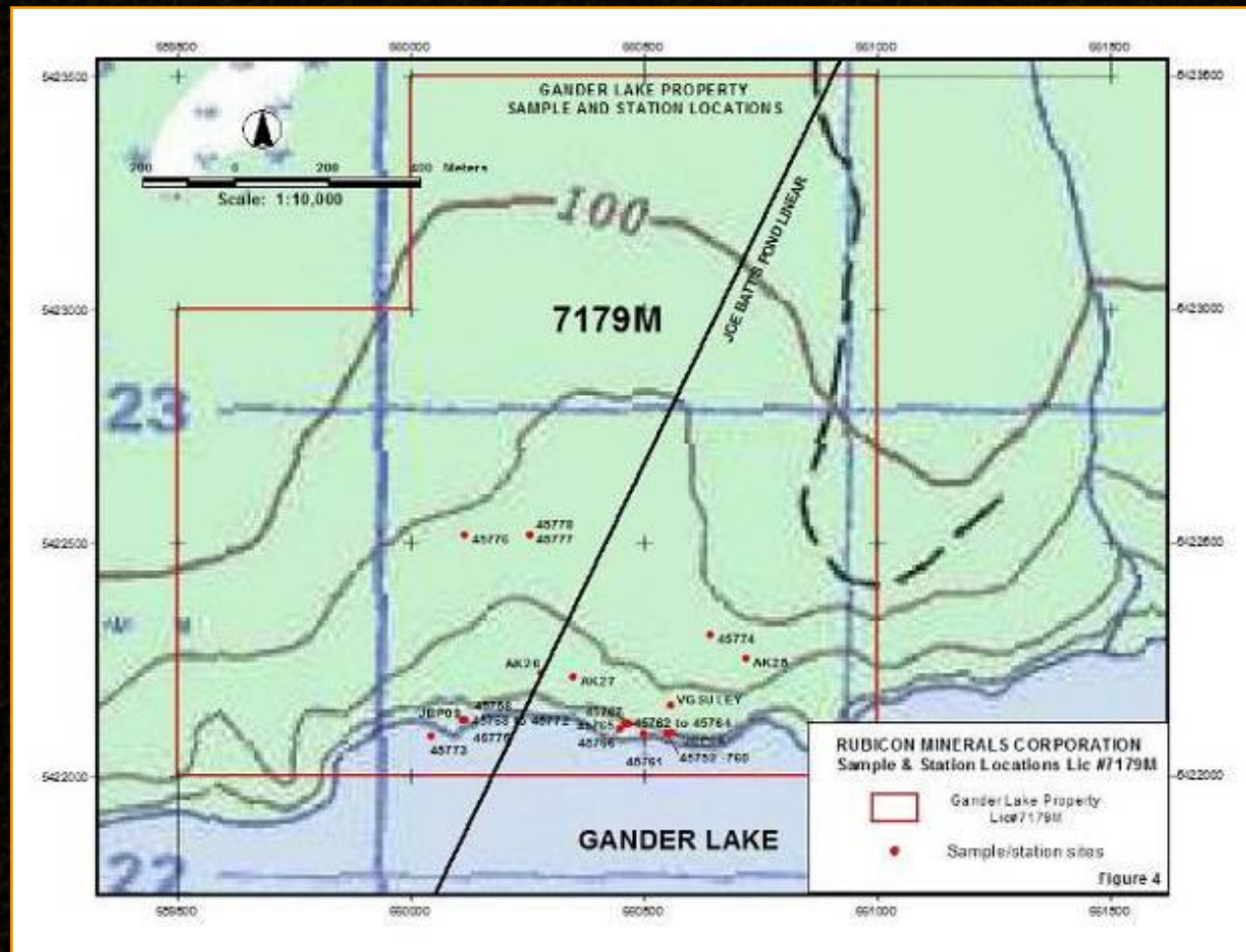


Victoria Lake Property

Note the important details in red



Sample Location Map



Can use a blow-up of your License Map or a topographic map

Appendices

Appendices come at the end of the report, and usually contain data, for example:

- Sample list with locations and brief descriptions
- Laboratory assay certificates
- Geochemical or geophysical survey data
- Expenditure list for work performed

SAMPLE LIST

Sample #	UTM E	UTM N	Description
R01	630000	5364000	0.5 metre quartz float, minor py
R02	632000	5365000	Rusty outcrop, quartz veins, cp etc.

py = pyrite, cp = chalcopyrite

- Ensure sample numbers are unique and consistent between location map, sample list and assay certificates

Assay Certificates

Client: Crosshair Exploration & Mining
Geologist: B. Sparkes
Project: SGP
Sample: Rock


DskFile: 591-E99263

DateIn: June 17, 2009
DateOut: June 24, 2009

Au Fire Assay/ICP Geochemistry Certificate

Eastern Analytical Limited
P.O. Box 187
Little Bay Road
Springdale, NL
A0J 1T0

Phone: 709-673-3909
Fax: 709-673-3408
Email: easternanalytical@nfaibn.com

Signed by: 

(Concentrations in assay range
may cause interferences in
associated elements)

Sample Number	Au ppb	Ce ppm	Sr ppm	Ba ppm	Fe %	P %	Hg ppm	Mg %	As ppm	V ppm	Na %	Mo ppm	Al %	Be ppm	Ca %	Zn ppm	Cu ppm	Sb ppm	Ag ppm	Pb ppm	Bi ppm	Ti %	Cd ppm	Co ppm	Ni ppm	W ppm	La ppm	K %	Mn ppm	Sn ppm	Cr ppm
S10001	6778	10	6	10	0.56	0.02	1	0.01	344	2	0.14	8	0.06	0.5	0.06	4	6	5	0.6	26	2	0.01	0.5	2	7	10	10	0.01	295	20	342
S10002	2440	10	7	14	0.98	0.02	1	0.05	539	3	0.16	13	0.19	0.5	0.07	24	7	5	0.2	57	2	0.01	0.5	4	10	10	10	0.03	973	20	423
S10003	5	10	1	10	0.39	0.01	1	0.01	7	2	0.11	9	0.05	0.5	0.01	4	2	5	0.2	2	2	0.01	0.5	2	7	10	10	0.01	221	20	353
S10004	5	30	>220	24	0.85	0.01	1	0.20	5	10	0.19	9	0.55	0.5	3.72	40	6	5	0.2	13	2	0.01	0.5	5	7	10	10	0.05	910	20	345
S10005	5	17	4	10	0.83	0.02	1	0.02	11	4	0.16	11	0.11	0.5	0.04	6	24	5	0.2	5	2	0.01	0.5	2	11	10	10	0.03	341	20	453
S10006	5	10	2	10	0.37	0.01	1	0.01	5	1	0.13	15	0.03	0.5	0.02	2	4	5	0.2	2	2	0.01	0.5	1	8	10	10	0.01	35	20	462
S10007	5	245	3	15	1.34	0.01	1	0.75	5	4	0.20	8	0.96	0.5	0.02	58	3	5	0.2	2	2	0.01	0.5	6	10	10	14	0.02	2863	20	312
S10008	5	10	4	10	0.91	0.02	1	0.02	23	2	0.13	14	0.11	0.5	0.03	6	5	5	0.2	7	2	0.01	0.5	2	9	10	10	0.01	913	20	447
S10009	5	10	2	10	0.52	0.01	1	0.01	39	3	0.18	12	0.07	0.5	0.01	3	3	5	0.2	3	2	0.01	0.5	2	9	10	10	0.01	248	20	449
S10051	5	10	2	10	0.41	0.01	1	0.01	31	2	0.17	14	0.06	0.5	0.01	2	4	5	0.2	2	2	0.01	0.5	1	7	10	10	0.01	108	20	432
S10052	101	10	2	10	0.35	0.01	1	0.01	15	2	0.15	10	0.04	0.5	0.02	1	3	5	0.2	2	2	0.01	0.5	1	8	10	10	0.01	45	20	390
S10053	56	20	10	16	1.70	0.01	1	0.13	331	8	0.16	14	0.32	0.5	0.17	13	28	5	0.2	2	2	0.01	0.5	4	11	10	10	0.03	484	20	467

- These are sent to you from the lab

Costs

Total costs should be listed, and then distributed by License if more than one License is being reported. Some typical items include :

- Prospecting (# days x \$100/day)
 - Report and research (# days x \$100/day)
 - Vehicle (# days x \$60/day)
 - Quad (# days x \$40/day)
 - Assays (total from receipts)
 - etc.
-
- For allowable daily rates, refer to [this page](#) on the DNR website
 - Note that receipts should not be filed unless requested

CONTACTS:

DEPARTMENT OF NATURAL RESOURCES

• Justin Lake	Claims recorder	709 729 6437	justinwlake@gov.nl.ca
• Trina Adams	Assessment reports	709 729 0573	trinaadams@gov.nl.ca
• Phil Saunders	Exploration consultant	709 729 6193	philsaunders@gov.nl.ca

Department of Natural Resources website <http://www.nr.gov.nl.ca/nr/>

Geoscience Resource Atlas <http://gis.geosurv.gov.nl.ca/>

Matty Mitchell Room http://www.nr.gov.nl.ca/nr/mines/prospector/matty_mitchell/index.html