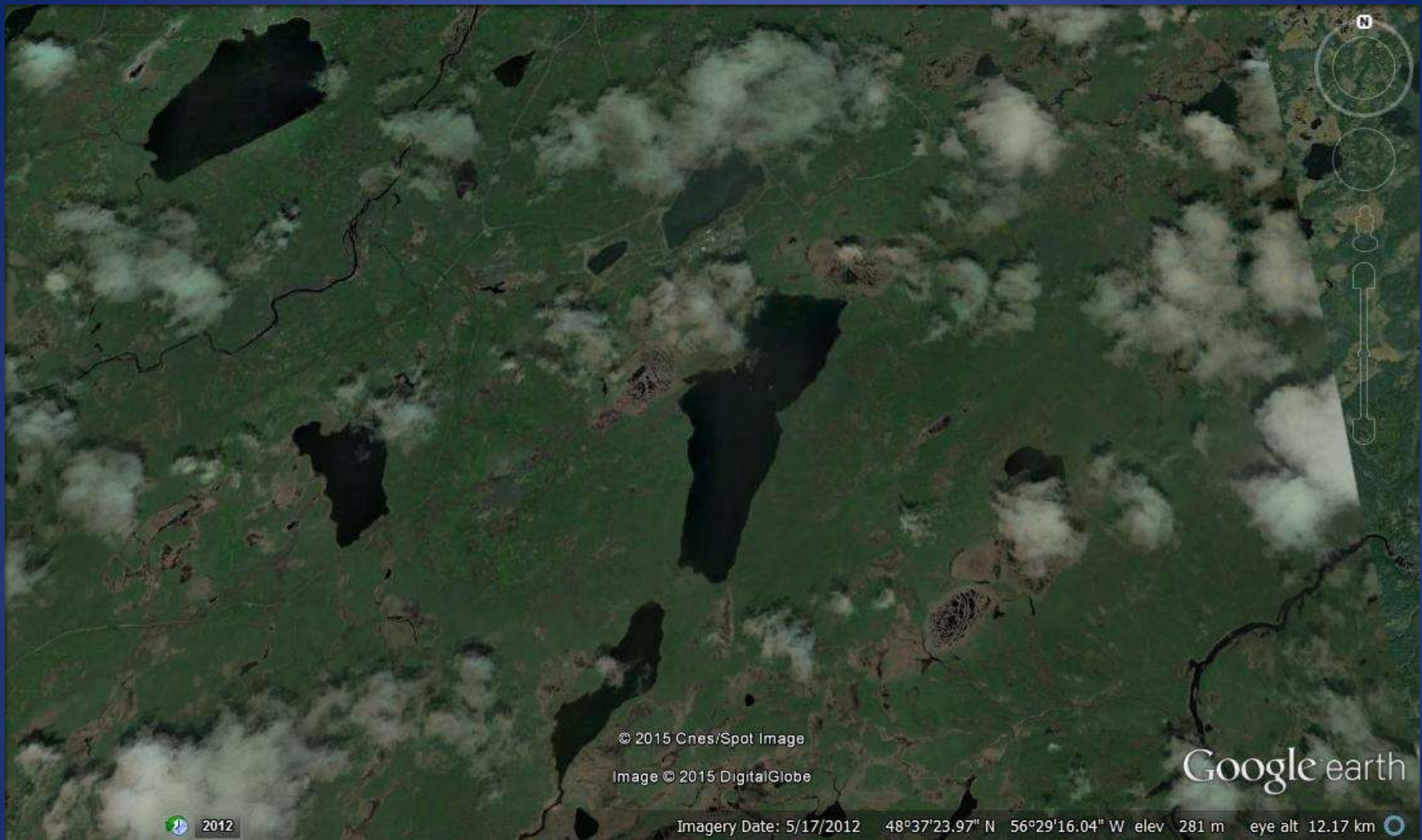


# TALLY POND / DUCK POND DEPOSIT

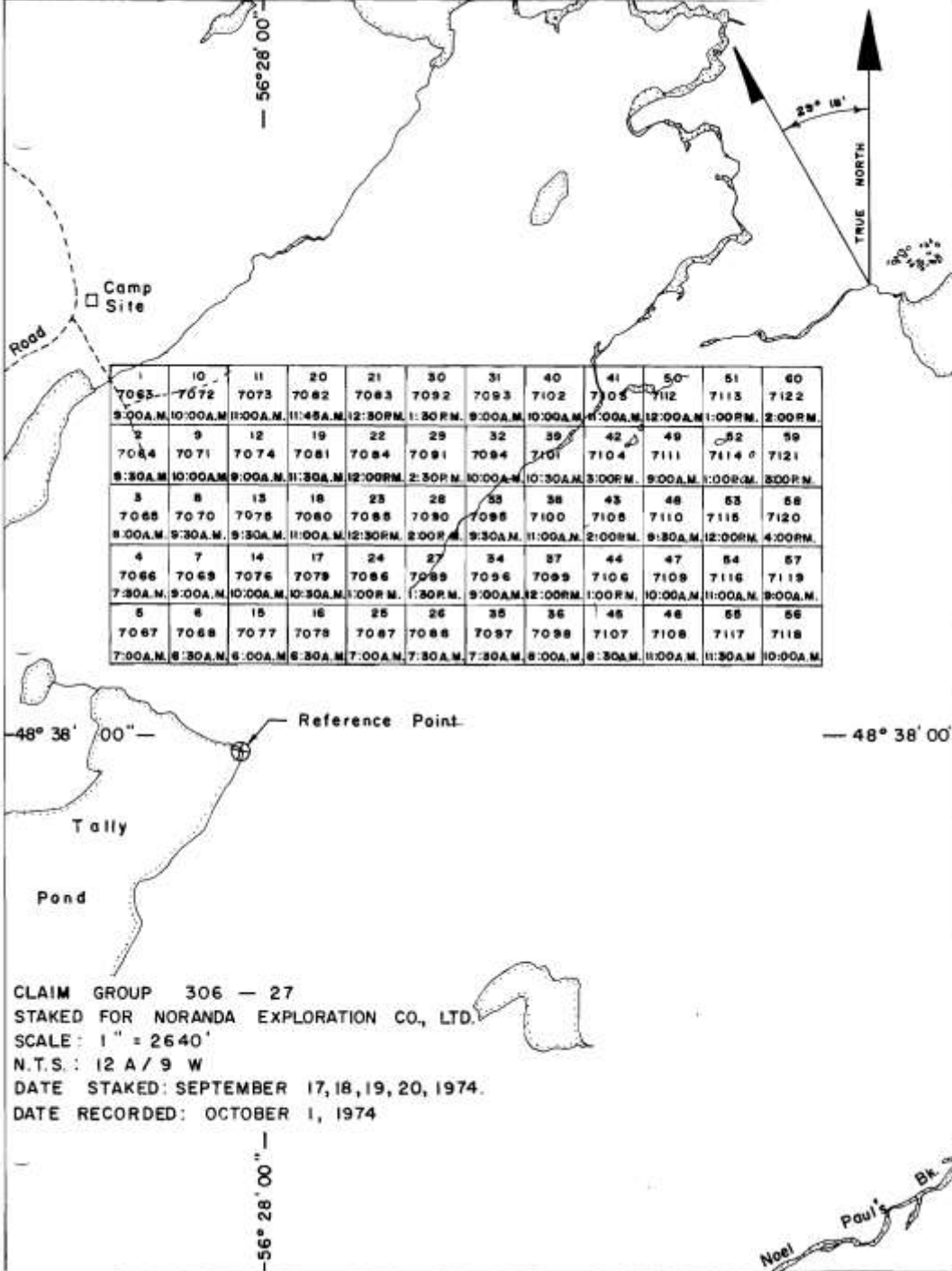
A Prospecting Assisted Discovery

NL Mineral Resources Review

Nov. 4, 2015



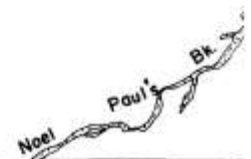
Google Earth Image – Tally Pond Area



1	10	11	20	21	30	31	40	41	50	51	60
7055	7072	7073	7082	7083	7092	7093	7102	7105	7112	7113	7122
9:00A.M.	10:00A.M.	11:00A.M.	11:45A.M.	12:30P.M.	1:30P.M.	9:00A.M.	10:00A.M.	11:00A.M.	12:00A.M.	1:00P.M.	2:00P.M.
2	9	12	19	22	29	32	39	42	49	52	59
7084	7071	7074	7081	7084	7091	7094	7101	7104	7111	7114	7121
9:30A.M.	10:00A.M.	9:00A.M.	11:30A.M.	12:00P.M.	2:30P.M.	10:00A.M.	10:30A.M.	3:00P.M.	9:00A.M.	1:00P.M.	3:00P.M.
3	8	13	18	23	28	33	38	43	48	53	58
7065	7070	7075	7080	7085	7090	7095	7100	7105	7110	7115	7120
8:00A.M.	9:30A.M.	9:30A.M.	11:00A.M.	12:30P.M.	2:00P.M.	9:30A.M.	11:00A.M.	2:00P.M.	9:30A.M.	12:00P.M.	4:00P.M.
4	7	14	17	24	27	34	37	44	47	54	57
7066	7069	7076	7079	7086	7089	7096	7099	7106	7109	7116	7119
7:30A.M.	9:00A.M.	10:00A.M.	10:30A.M.	1:00P.M.	1:30P.M.	9:00A.M.	12:00P.M.	1:00P.M.	10:00A.M.	11:00A.M.	9:00A.M.
5	6	15	16	25	26	35	36	45	46	55	56
7067	7068	7077	7078	7087	7088	7097	7098	7107	7108	7117	7118
7:00A.M.	8:30A.M.	8:00A.M.	8:30A.M.	7:00A.M.	7:30A.M.	7:30A.M.	8:00A.M.	8:30A.M.	11:00A.M.	11:30A.M.	10:00A.M.

Noranda Exploration  
Tally Pond Claim Group  
Project 306-27-1  
1974

CLAIM GROUP 306 - 27  
STAKED FOR NORANDA EXPLORATION CO., LTD.  
SCALE: 1" = 2640'  
N.T.S.: 12 A / 9 W  
DATE STAKED: SEPTEMBER 17, 18, 19, 20, 1974.  
DATE RECORDED: OCTOBER 1, 1974







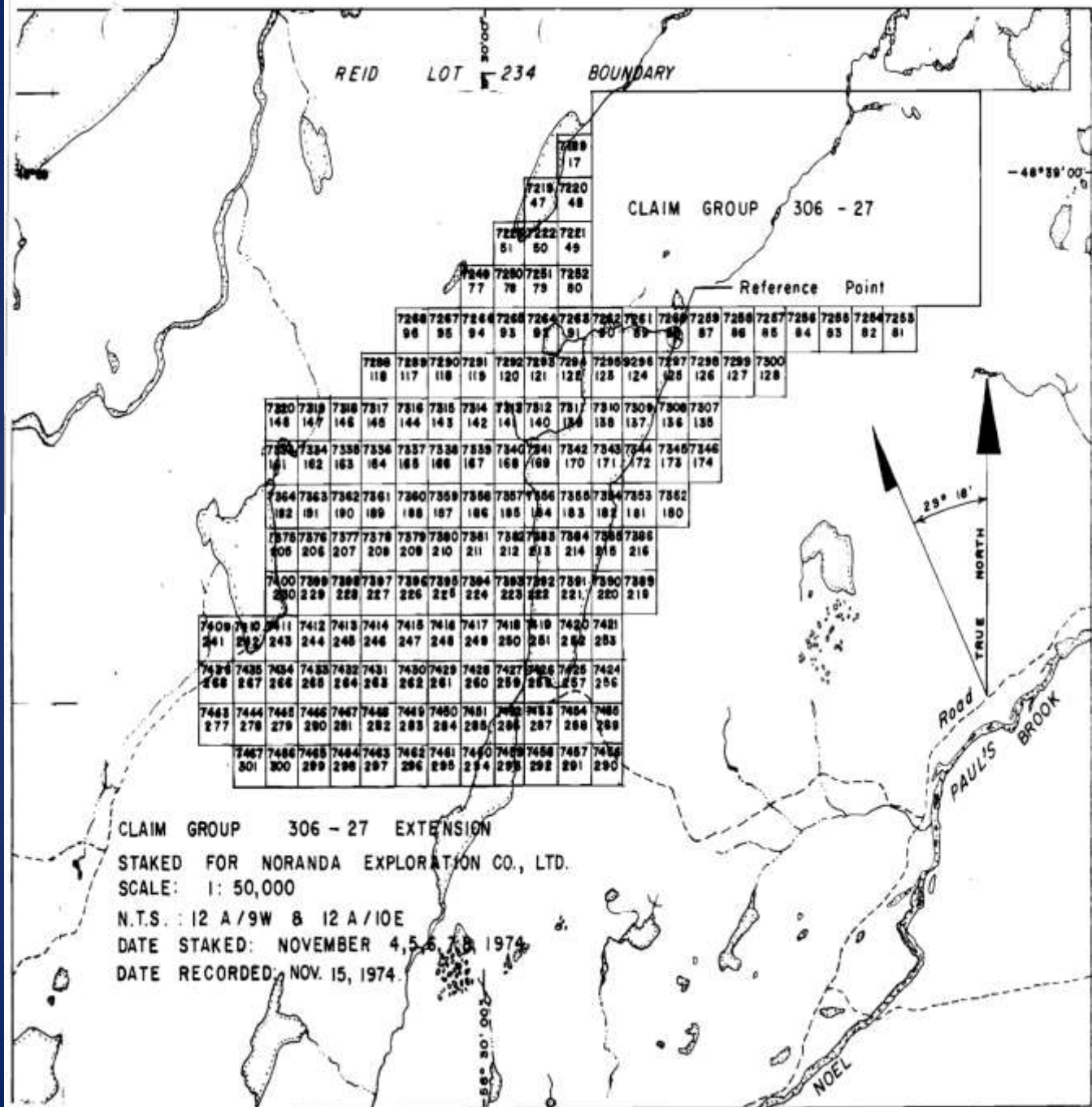
East Pond Brook - Pb/Zn outcrop (D. MacDonald, A Keats, J. James) – summer 1974





Tally Pond – East Pond Brook Road (W) - Original Discovery of MS Boulder





Noranda Exploration  
 Tally Pond Claim Group  
 Project 306-27-1  
 November, 1974  
 (after AK boulder  
 discovery )







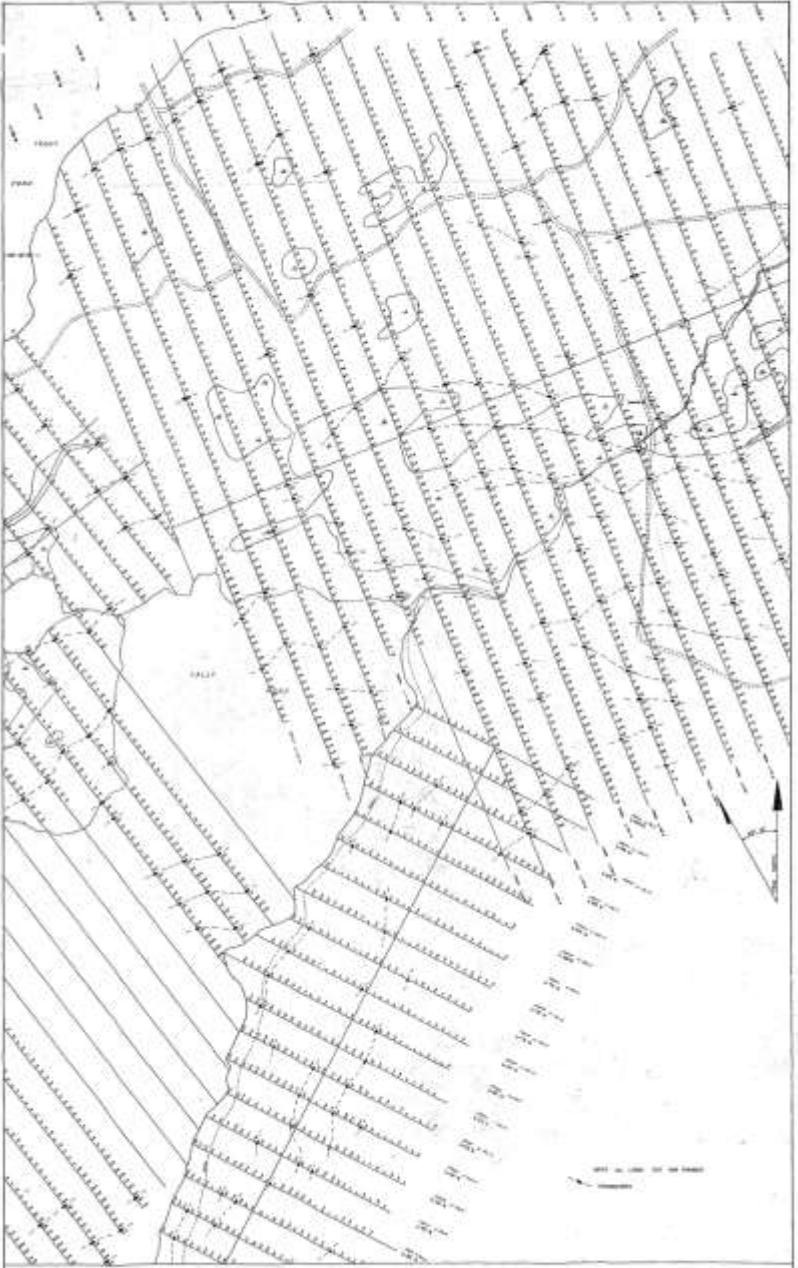
Tally Pond Area – Google Earth Image  
(stars show location of MS boulders)





Tally Pond Massive Sulphide Boulders  
NE Corner Tally Pond  
Discovered by Al Keats – summer 1975?





ST 200 SURVEY  
noranda

# Noranda Grids

Tally Pond / Duck Pond Area  
1974/75



Hole No.	Grid	Location	A.E.M. Conductor	To Test	Azimuth	Dip	Length	Comments
306-27-1	1	L 8W 9+00S	4	V.L.E.M. conductor	158°	-51°	760'	Rhyolites, minor graphite at top hole - drilled down dip
306-27-2	2	L 4E 10+31S	6	V.L.E.M. conductor	140°	-45°	916'	Rhyolites, graphitic shale, rhyolites. Fracture filling pyrite, minor chalcopyrite below graphitic shale in rhyolite fragmental
306-27-3	1	L 8W 14+50S	4	V.L.E.M. conductor	338°	-45°	430'	Graphitic shale, some rhyolite
306-27-4	1	L 28E 6+50S	4	S.E. 200 broadside	338°	-45°	557'	Rhyolite, graphitic shale, rhyolite
306-27-5	2	L 12W 19+50N	27u 28n	Radem	140°	-46°	319'	Pillowed basic volcanics, pyritic graphitic argillite, rhyolite
306-27-6	6	L 24S 7+75W	4	V.L.E.M. conductor	303°	-46.5°	354'	Rhyolite, graphitic argillite, siltstone, rhyolite
306-27-7	6	L 24S 11+00W	4	V.L.E.M. conductor	123°	-46°	258'	Rhyolite, graphitic argillite, siltstone
306-27-8	5	L 44S 54+00E	5b	C.E.M. shootback	300°	-44°	280'	Rhyolite, graphitic cherty argillite with 25% pyrrhotite. pillowed silicified andesite
306-27-9	1	L 60W 18+00N	34a 35a (7)	Induced Potential	158°	-45°	408'	Rhyolite, minor dike with disseminated and fracture filling pyrite

4262' - Total footage drilled



Looking NW across Duck Pond

Tally Pond / Duck Pond  
Diamond Drilling  
DDH 306-27-2

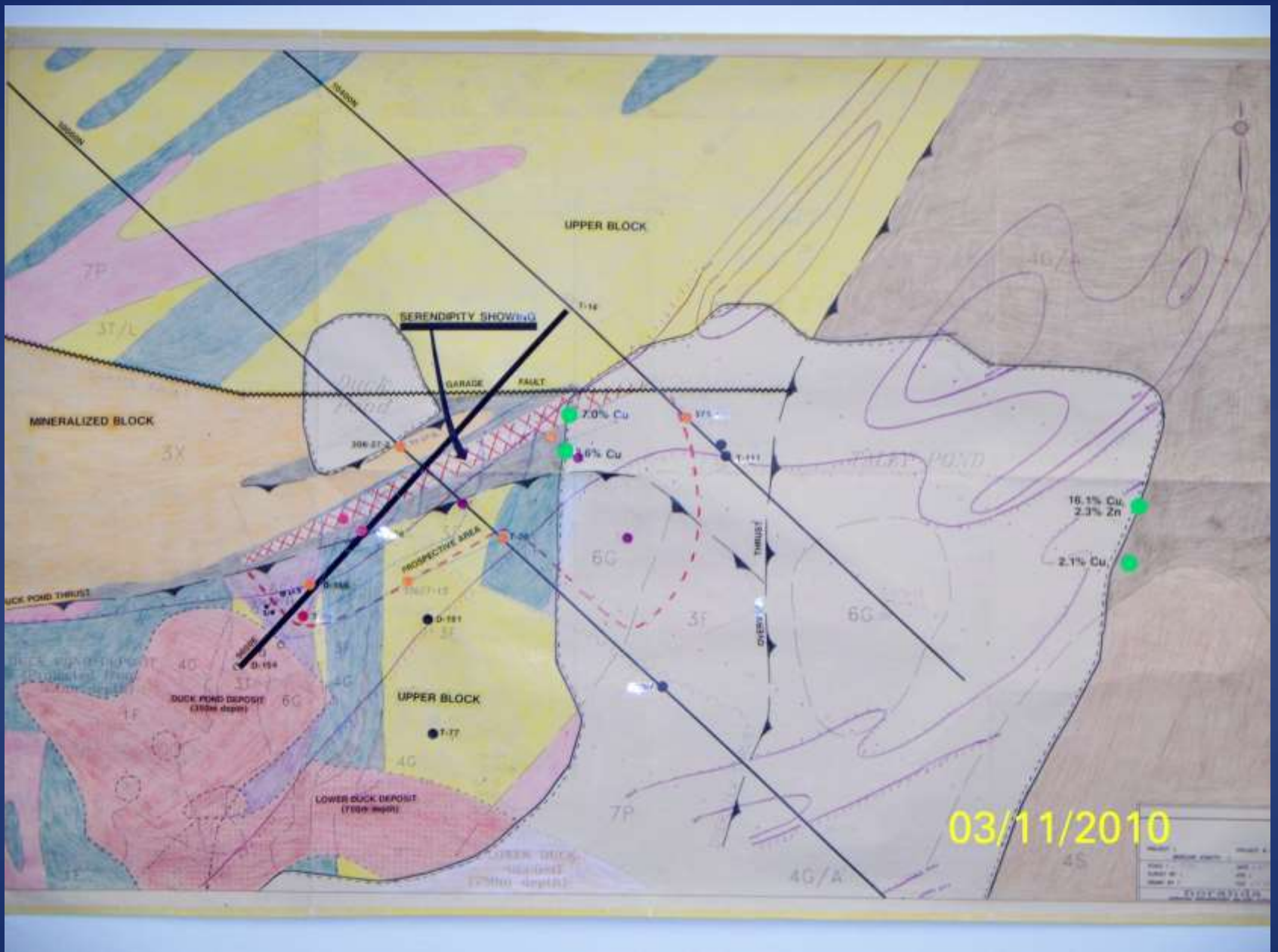
Looking SE to Tally Pond







Tally Pond / Duck Pond Deposit – Diamond Drills - 1986



Serendipity Zone – Tally / Duck Pond – North end Tally Pond





Noranda Campsite – 1973-1983



East Pond Brook Road after 30 years  
Tally Pond – Oct. 2010

Noranda - East Pond Brook Rd  
Campsite Oct. 2010  
(Al Keats, Peter Dimmell)





Duck Pond Mine Official Opening - 2007







Duck Pond – Underground Ore – October 2010





Duck Pond Flotation Cell – Copper





Boundary Deposit Area – October 2010





North Pit – Boundary Deposit  
Spring 2014



Muck Pile – Boundary North Pit



Boundary – polished slab

Boundary Deposit Ore