

THE MATTY MITCHELL PROSPECTORS RESOURCE ROOM

**A public-private sector partnership working for the
Newfoundland and Labrador prospecting community**

by the MMPRR management committee

2014

Matty Mitchell
Prospectors Resource Room



Sponsored By:



Located in offices of

GEOLOGICAL SURVEY

Dept. of Natural Resources

1st Floor

Natural Resources Building

50 Elizabeth Avenue

P.O. Box 8700,

St. John's, NL

A1B 4J6

The Matty Mitchell Prospectors Resource Room



The Matty Mitchell Prospectors Resource Room



Launched in 1998

by

Geological Survey
Department of Natural Resources
Newfoundland and Labrador

Main proponents



Sean O'Brien



Norm Mercer



Principal Sponsors/Partners:

Department of Natural Resources

Mining Industry NL



Management Committee

Represents government, industry and university.

Programs

Programs delivered in conjunction with the Mineral Development Division, DNR and the Mining Industry Association (MINL).



Who Was Matty Mitchell?



- ❖ **Matty Mitchell – perhaps most famous prospector in province’s history.**
- ❖ **(Mi’kmaq and Montagnais Innu ancestry) - a hunter, guide and expert woodsman.**
- ❖ **In early 1900’s, he found mineralization along the banks of the Buchans River.**
- ❖ **His discovery led to the production of 16.2 million tonnes of high grade ore from the Buchans Mine.**
- ❖ **Present day value (early 2014) of this ore is approx. \$11 (Can.) billion.**
- ❖ **Matty passed away in 1922 at the age of 75, sadly, before his discovery became a world class mine.**

The Matty Mitchell Prospectors Resource Room

WHAT DO WE DO?

- ❖ **Provide mentoring, technical support and promotional assistance to prospectors across Newfoundland and Labrador.**

The Matty Mitchell Prospectors Resource Room

WHAT DO WE DO?

- ❖ **Provide mentoring, technical support and promotional assistance to prospectors across Newfoundland and Labrador.**

WHY DO WE DO IT?

- ❖ **To encourage prospectors in their work of property promotion which attracts new mineral investment to the province and stimulates the provincial mineral industry.**
- ❖ **This helps to create jobs and wealth through mineral exploration and development.**

**PROSPECTING
CREATES WEALTH!**



**Prospectors Al Chislett and Chris Verbiski
Discovery Hole – Voisey's Bay Ni-Cu-Co Mine**

**Open Pit Development
at Voisey's Bay, 2012**



**Long Harbour Development, 2012: Hydromet
facility to process Voisey's Bay Ni-Cu-Co ore.**



The Matty Mitchell Prospectors Resource Room



**PROSPECTING IS
ALSO FUN, GREAT
EXERCISE, AND A
FINE WAY TO SPEND
TIME IN THE
COUNTRY !**



The Resource Room provides prospectors with

INFORMATION AND CONSULTATION SERVICES

- ❖ **One-on-one advice, including rock and mineral identification, technical support and referrals.**

The Resource Room provides prospectors with

INFORMATION AND CONSULTATION SERVICES

One-on-one advice, including rock and mineral identification, technical support, referrals and mentoring.

- ❖ **Reference collection of rocks, common minerals, ore mineral suites and rock alteration styles from around the province and the world.**

The Resource Room provides prospectors with

INFORMATION AND CONSULTATION SERVICES

One-on-one advice, including rock and mineral identification, technical support, referrals and mentoring.

Reference collection of rocks, minerals, ore suites and alteration styles from around the province and around the world.

❖ Textbooks and articles on geology, maps, short course notes, databases ... and more.

Free Assays!

DNR through the Matty Mitchell Room provides free assays for prospectors on a limited number of prospective samples.

Required – UTM's (Eastings/Northings) for each sample...

Confidentiality assured...

Other requirements...

The Matty Mitchell Prospectors Resource Room



Rock and Ore Sample Collection

The Matty Mitchell Prospectors Resource Room



We also provide prospectors with...

PROMOTIONAL SERVICES

“Property poster series” (hard copies and CD-ROMs)

“PROPERTY POSTER” SERIES

NEWFOUNDLAND & LABRADOR

Explore The Opportunities

Cripple Creek Property Cu-Au-Sb

Prospector-driven option deals
Attracts considerable investment
to Newfoundland and Labrador
One example is Cripple Creek...

Expenditures (Approx)
\$633,000
By Capstone Mining
(2012/2013)

Property previously
optioned to
Richmont Mining
in 2006 who spent
at least
\$150,000 there



Map 1. Property location map

The **Cripple Creek Property** consists of 268 claims (Lic. # 12415M, 16272M, 17797M, 17802M, 17803M, 18072M and 18073M) located approx 25 km north of the town of Gander, on the Gander River (NTS 2E/02, 2E/01). The property is readily accessible from the Gander Bay Highway (Route 330) and woods roads and trails.

Regional Geology

The property lies on the eastern edge of the Dunnage Zone. This region is underlain by sedimentary rocks of the lowermost Davidsville Group tectonically interleaved with felsic, mafic and ultramafic rocks of the Gander River Complex.

Local Geology

Within the property area, Davidsville Group sedimentary rocks comprise sandstone, conglomerate, coarse-grained sandstone and dark grey to black shale and siltstone, all of which has a strong penetrative cleavage. Gander River Complex rocks include trondhjemite, intermediate to mafic volcanics, gabbro, diabase, serpentinite, pyroxenite and ultramafic rocks altered to talc-magnesite assemblages.

Mineralization

The two main areas of mineralization are the original Cripple Creek Prospect (Gander River Minerals) which comprises a series of quartz veins (0.1 - 1 m thick) with pyrite and arsenopyrite, and the semi-mafic chalcopryite zone of LeDrew and Fancey. The quartz veins have an historical assay of **9 g/t Au**. These veins are primarily trondhjemite, volcaniclastic sedimentary and mafic volcanic rocks showing moderate to intense alteration to assemblages of ankerite ± sericite(?). Intense alteration of mafic rocks also occur nearby. The host rocks contain patchy to disseminated pyrite and arsenopyrite.

The second mineralized site contains a ~0.75 km wide zone of semi-massive chalcopryite hosted by volcaniclastic rocks. The mineralization zone lies proximal to ultramafic rocks showing intense alteration to ankerite and also containing thin quartz stringers. Black shale and trondhjemite are exposed nearby, assays on 4% Au and 13% Cu have been obtained at this site. Seven grab samples in total were collected from the Property (2005) yielding significant gold, copper and silver values, including Au up to **19.8 g/t**, Cu up to **10.2% Ag** up to **19 g/t**. Three of the samples contain anomalous Au from 0.85 to 0.853 ppb. The sample that assayed **4853 ppb Au** (RNF30107) also contains 0.6% Cu with 18.4 ppm Ag, 3170 ppm As and 334 ppm Zn. The sample is similar to RNF30106 that assayed 165 ppb Au, 3.16% Cu, 22.1% Ag and 182 ppm Zn. Sampling in 2008 returned two assays with up to 0.6% Cu (Sb 3), reinforcing the polymetallic nature of the mineralization. Recent sampling (Table 3) returned assays up to **1 g/t Au**, **0.12% Zn**, **15.5% Cu** and **31.1% Ag** at the east of the Cripple Creek Prospect. New mineralized zones are characterized by intense alteration and have significantly extended the strike length of the mineralized zone.

Mineralization Model

The significant Au values associated with up to 10% Cu and elevated Zn are reminiscent of deposits such as Tilt Cove, Terra Nova, Bett's Cove and the Rambler area (among others), all associated with ophiolitic sequences. Other similarities including abundant evidence for intense alteration of ultramafic rocks indicates an excellent potential for economic concentrations of mesothermal-VMS associated Au-Cu-Zn+Ag. The recent discovery of antimony also suggests the potential for Beaver Brook type mineralization.

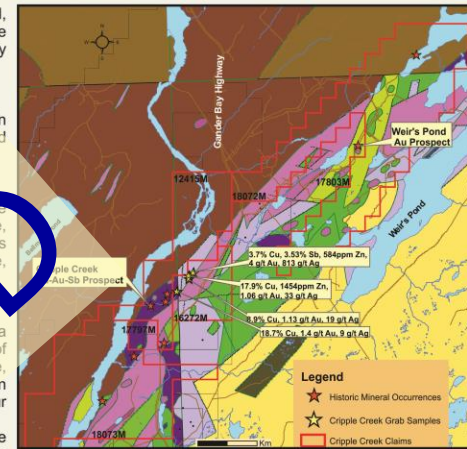
FOR MORE INFORMATION CONTACT:

Derrick Fancey
Tel: (709) 676-2124
E-mail: marilyn_fancey@yahoo.ca

Donald LeDrew
Tel: (709) 676-2904

Sample #	Cu%	Ag g/t	Sb%
2008-70	1.44	339	0.61
2008-74	—	151	0.36

Table 2: 2008 rock samples



Map 2. Claims and property geology map

Source: Mineral Occurrence Database - Geological Survey, Department of Natural Resources
Website: <http://www.gov.nl.ca/mines/gen/geosurvey>

P.H. Davenport, L.W. Nolan, A.J. Butler, H.A. Wagenbauer and P. Honarvar, 1999 The Geoscience Atlas of Newfoundland. Newfoundland Department of Mines and Energy, Geological Survey, Open File NFDL2687, Version 1.1

Sample #	Au(ppm)	Zn(ppm)	Cu%	Ag g/t
3031	2452	213	6.4	12
3032	7358	233	6.3	10.3
3033	1252	200	7.1	17.5
3034	1248	255	10.2	21.9
3040	7260	258	7.5	15.4
9008	19893	355	3.18	>6.0
#413	12265	219	>1	>6.0
RNF30105*	492	-	-	>6.0
RNF30106*	165	182	3.18	>6.0
RNF30107*	4853	334	8.0	>6.0

Table 1. Grab sample assay results (Rubicon Minerals Samples)

Sample	Auppb	Asppm	Znppm	Cu%	Agg/t
CK 7000	142	5	0.017		
CK 7001	363				
CU 7002	50	56			
CU 7003	508	35	473	12.4	13
CU 7004		374	241	0.53	0.5
CU 7006	1030	298	1220	15.5	31.1
CU 7007		64	31	0.086	0.2
CU 7008	43	134	133	1.33	3.5
CU 7009	272	101	153	1.88	18.9
CRIS 7012			59	0.05	
CRIS 7014	398	73	101	4.2	9.97
CRIS 7015	399	61	199	11.7	16.9
CRIS 7016S		663	67	0.01	0.3

Table 3: 2010 rock samples

Produced By:
MM
prospectors
resource room

Revised February, 2012

PROMOTIONAL SERVICES

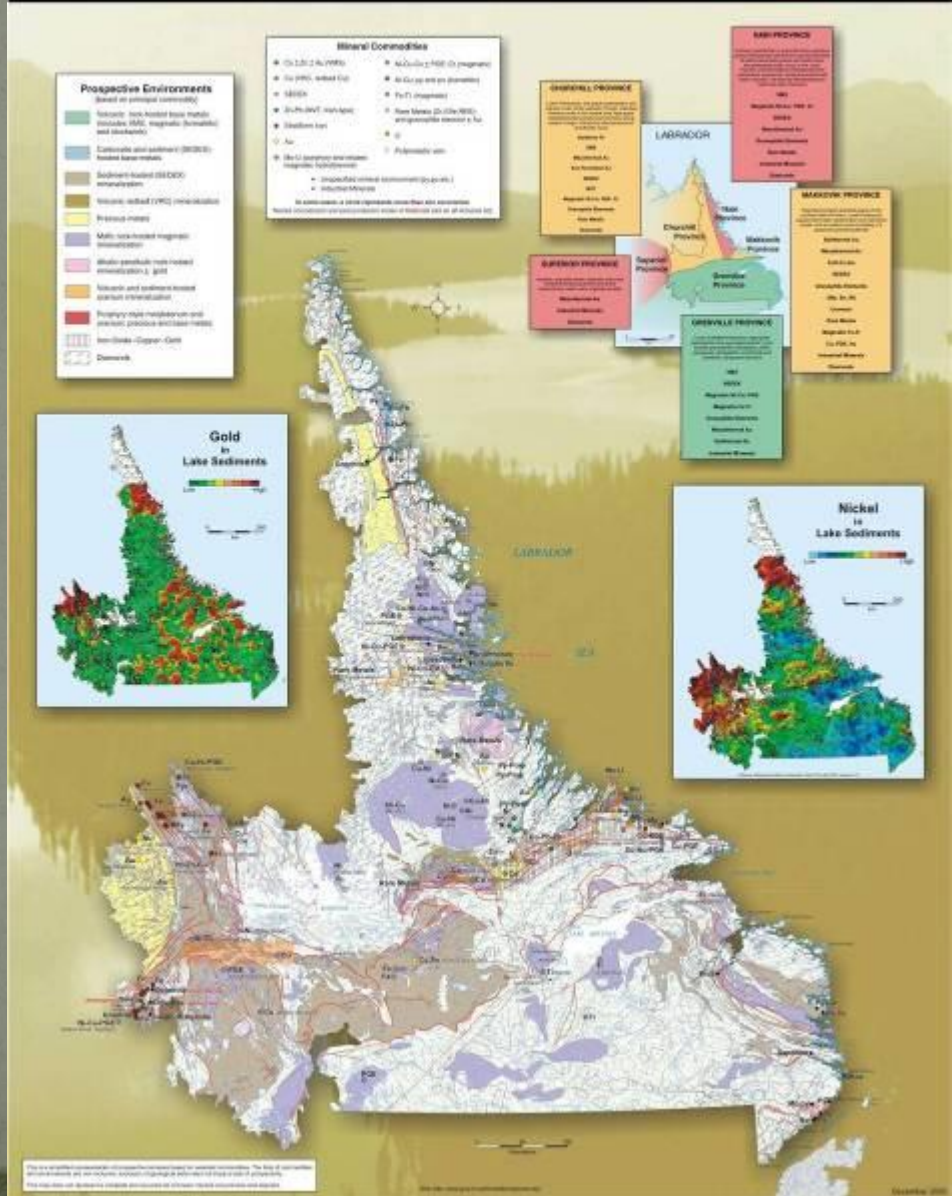
“Property poster series” (hard copies and CD-ROMs)

Regional technical posters

“REGIONAL TECHNICAL POSTER” SERIES

Geology which would be favourable to different types of mineralization

PROSPECTING ENVIRONMENTS LABRADOR



PROMOTIONAL SERVICES

“Property poster series” (hard copies and CD-ROMs)

Regional technical posters

**“Properties for Option” series: maps, booklets
and CD-ROMs**

“PROPERTIES FOR OPTION” SERIES

A REPRESENTATIVE SELECTION OF GOLD PROPERTIES AVAILABLE FOR OPTION ON THE ISLAND OF NEWFOUNDLAND

Compiled by
The Maty Mitchell Prospectors Resource Room Partners
with the sponsorship of
The Newfoundland and Labrador Department of Mineral Resources & the
Newfoundland and Labrador Chamber of Mineral Resources
January 2005
(Geological Survey)

NEWFOUNDLAND GOLD

HYDROTHERMAL GOLD
1. PLACER DEPOSITS AND VEIN DEPOSITS
2. VEIN DEPOSITS
3. VEIN DEPOSITS
4. VEIN DEPOSITS
5. VEIN DEPOSITS
6. VEIN DEPOSITS
7. VEIN DEPOSITS
8. VEIN DEPOSITS
9. VEIN DEPOSITS
10. VEIN DEPOSITS
11. VEIN DEPOSITS
12. VEIN DEPOSITS
13. VEIN DEPOSITS
14. VEIN DEPOSITS
15. VEIN DEPOSITS
16. VEIN DEPOSITS
17. VEIN DEPOSITS
18. VEIN DEPOSITS
19. VEIN DEPOSITS
20. VEIN DEPOSITS
21. VEIN DEPOSITS
22. VEIN DEPOSITS
23. VEIN DEPOSITS
24. VEIN DEPOSITS
25. VEIN DEPOSITS
26. VEIN DEPOSITS
27. VEIN DEPOSITS
28. VEIN DEPOSITS
29. VEIN DEPOSITS
30. VEIN DEPOSITS
31. VEIN DEPOSITS
32. VEIN DEPOSITS
33. VEIN DEPOSITS
34. VEIN DEPOSITS
35. VEIN DEPOSITS
36. VEIN DEPOSITS
37. VEIN DEPOSITS
38. VEIN DEPOSITS
39. VEIN DEPOSITS
40. VEIN DEPOSITS
41. VEIN DEPOSITS
42. VEIN DEPOSITS
43. VEIN DEPOSITS
44. VEIN DEPOSITS
45. VEIN DEPOSITS
46. VEIN DEPOSITS
47. VEIN DEPOSITS
48. VEIN DEPOSITS
49. VEIN DEPOSITS
50. VEIN DEPOSITS
51. VEIN DEPOSITS
52. VEIN DEPOSITS
53. VEIN DEPOSITS
54. VEIN DEPOSITS
55. VEIN DEPOSITS
56. VEIN DEPOSITS
57. VEIN DEPOSITS
58. VEIN DEPOSITS
59. VEIN DEPOSITS
60. VEIN DEPOSITS
61. VEIN DEPOSITS
62. VEIN DEPOSITS
63. VEIN DEPOSITS
64. VEIN DEPOSITS
65. VEIN DEPOSITS
66. VEIN DEPOSITS
67. VEIN DEPOSITS
68. VEIN DEPOSITS
69. VEIN DEPOSITS
70. VEIN DEPOSITS
71. VEIN DEPOSITS
72. VEIN DEPOSITS
73. VEIN DEPOSITS
74. VEIN DEPOSITS
75. VEIN DEPOSITS
76. VEIN DEPOSITS
77. VEIN DEPOSITS
78. VEIN DEPOSITS
79. VEIN DEPOSITS
80. VEIN DEPOSITS
81. VEIN DEPOSITS
82. VEIN DEPOSITS
83. VEIN DEPOSITS
84. VEIN DEPOSITS
85. VEIN DEPOSITS
86. VEIN DEPOSITS
87. VEIN DEPOSITS
88. VEIN DEPOSITS
89. VEIN DEPOSITS
90. VEIN DEPOSITS
91. VEIN DEPOSITS
92. VEIN DEPOSITS
93. VEIN DEPOSITS
94. VEIN DEPOSITS
95. VEIN DEPOSITS
96. VEIN DEPOSITS
97. VEIN DEPOSITS
98. VEIN DEPOSITS
99. VEIN DEPOSITS
100. VEIN DEPOSITS

NEOARCHAIC GOLD
1. PLACER DEPOSITS AND VEIN DEPOSITS
2. VEIN DEPOSITS
3. VEIN DEPOSITS
4. VEIN DEPOSITS
5. VEIN DEPOSITS
6. VEIN DEPOSITS
7. VEIN DEPOSITS
8. VEIN DEPOSITS
9. VEIN DEPOSITS
10. VEIN DEPOSITS
11. VEIN DEPOSITS
12. VEIN DEPOSITS
13. VEIN DEPOSITS
14. VEIN DEPOSITS
15. VEIN DEPOSITS
16. VEIN DEPOSITS
17. VEIN DEPOSITS
18. VEIN DEPOSITS
19. VEIN DEPOSITS
20. VEIN DEPOSITS
21. VEIN DEPOSITS
22. VEIN DEPOSITS
23. VEIN DEPOSITS
24. VEIN DEPOSITS
25. VEIN DEPOSITS
26. VEIN DEPOSITS
27. VEIN DEPOSITS
28. VEIN DEPOSITS
29. VEIN DEPOSITS
30. VEIN DEPOSITS
31. VEIN DEPOSITS
32. VEIN DEPOSITS
33. VEIN DEPOSITS
34. VEIN DEPOSITS
35. VEIN DEPOSITS
36. VEIN DEPOSITS
37. VEIN DEPOSITS
38. VEIN DEPOSITS
39. VEIN DEPOSITS
40. VEIN DEPOSITS
41. VEIN DEPOSITS
42. VEIN DEPOSITS
43. VEIN DEPOSITS
44. VEIN DEPOSITS
45. VEIN DEPOSITS
46. VEIN DEPOSITS
47. VEIN DEPOSITS
48. VEIN DEPOSITS
49. VEIN DEPOSITS
50. VEIN DEPOSITS
51. VEIN DEPOSITS
52. VEIN DEPOSITS
53. VEIN DEPOSITS
54. VEIN DEPOSITS
55. VEIN DEPOSITS
56. VEIN DEPOSITS
57. VEIN DEPOSITS
58. VEIN DEPOSITS
59. VEIN DEPOSITS
60. VEIN DEPOSITS
61. VEIN DEPOSITS
62. VEIN DEPOSITS
63. VEIN DEPOSITS
64. VEIN DEPOSITS
65. VEIN DEPOSITS
66. VEIN DEPOSITS
67. VEIN DEPOSITS
68. VEIN DEPOSITS
69. VEIN DEPOSITS
70. VEIN DEPOSITS
71. VEIN DEPOSITS
72. VEIN DEPOSITS
73. VEIN DEPOSITS
74. VEIN DEPOSITS
75. VEIN DEPOSITS
76. VEIN DEPOSITS
77. VEIN DEPOSITS
78. VEIN DEPOSITS
79. VEIN DEPOSITS
80. VEIN DEPOSITS
81. VEIN DEPOSITS
82. VEIN DEPOSITS
83. VEIN DEPOSITS
84. VEIN DEPOSITS
85. VEIN DEPOSITS
86. VEIN DEPOSITS
87. VEIN DEPOSITS
88. VEIN DEPOSITS
89. VEIN DEPOSITS
90. VEIN DEPOSITS
91. VEIN DEPOSITS
92. VEIN DEPOSITS
93. VEIN DEPOSITS
94. VEIN DEPOSITS
95. VEIN DEPOSITS
96. VEIN DEPOSITS
97. VEIN DEPOSITS
98. VEIN DEPOSITS
99. VEIN DEPOSITS
100. VEIN DEPOSITS

- A REPRESENTATIVE SELECTION OF PROPERTIES AVAILABLE FOR OPTION IN NEWFOUNDLAND AND LABRADOR
- GOLD-PLATINUM-PALLADIUM
 - VOLCANOGENIC MASSIVE SULPHIDE
 - MAGNETIC SULPHIDE
 - SEDIMENT-HOSTED STRATIFORM COPPER
 - VOLCANIC RED BED COPPER
 - URANIUM
 - POLYMERUN-ANTIMONY-TUNGSTEN
 - IRON
 - VEIN TYPE DEPOSITS
 - GEMSTONES
 - INDUSTRIAL MINERALS
 - DIMENSION STONE

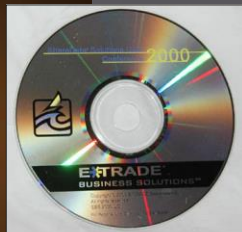
compiled by
The Maty Mitchell Prospectors Resource Room Partners
with the sponsorship of
The Newfoundland and Labrador Chamber of Mineral Resources & the
Newfoundland and Labrador Department of Natural Resources



NEWFOUNDLAND & LABRADOR Explore The Opportunities

Nickel
Prospects, Showings
and
Properties For Option

Facilitated by
E-TRADE
March 15th - 4th, 2009
Toronto, Ont.



Produced by
MMP
The Maty Mitchell Prospectors Resource Room
Post Box: Mineral Resources Building
Geological Survey of Newfoundland and Labrador
48 Elizabeth Ave. P.O. Box 9181, St. John's
St. John's, Newfoundland, Canada
Telephone: (709) 753-2000
Email: matymitchell@mlr.gov.nl.ca
Website: www.ml.gov.nl.ca/mlr/mlrindex.html

PROMOTIONAL SERVICES

Property poster series (hard copies and CD-ROMs)

Regional technical posters

“Properties for Option” series: maps and booklets and CD-ROMs

Other support in preparation for local and national mining and exploration conferences (handouts, sample preparation, data presentation etc.)

The Matty Mitchell Prospectors Resource Room provides prospectors with

**TECHNICAL AND LOGISTICAL SUPPORT AT
MINERAL INDUSTRY TRADE SHOWS AND
CONFERENCES**

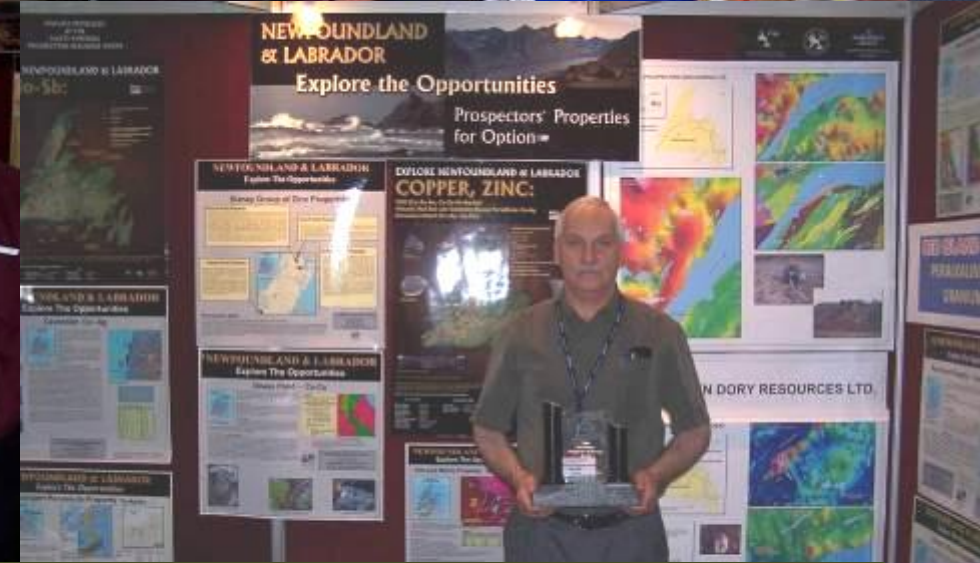
- **Prospectors and Developers Association of Canada
(PDAC) Conference, Toronto
Atlantic Rock Room**

Prospectors' Displays with Posters and Rock Samples, PDAC Toronto



PDAC 2007

**Prospectors of the Year Award
For 2006
Awarded to
Prospecting Families
Keats, Stares and Crockers**



*Prospector Al Keats: PDAC 2007, Toronto and the
Prospector of the Year Award*

The Matty Mitchell Prospectors Resource Room



*Original award presented to the Keats and Stares prospecting families from Benton, Newfoundland and Labrador.
This award was generously donated to the Matty Mitchell Room in recognition of the service provided to the prospecting community by
The Matty Mitchell Prospectors Resource Room.*



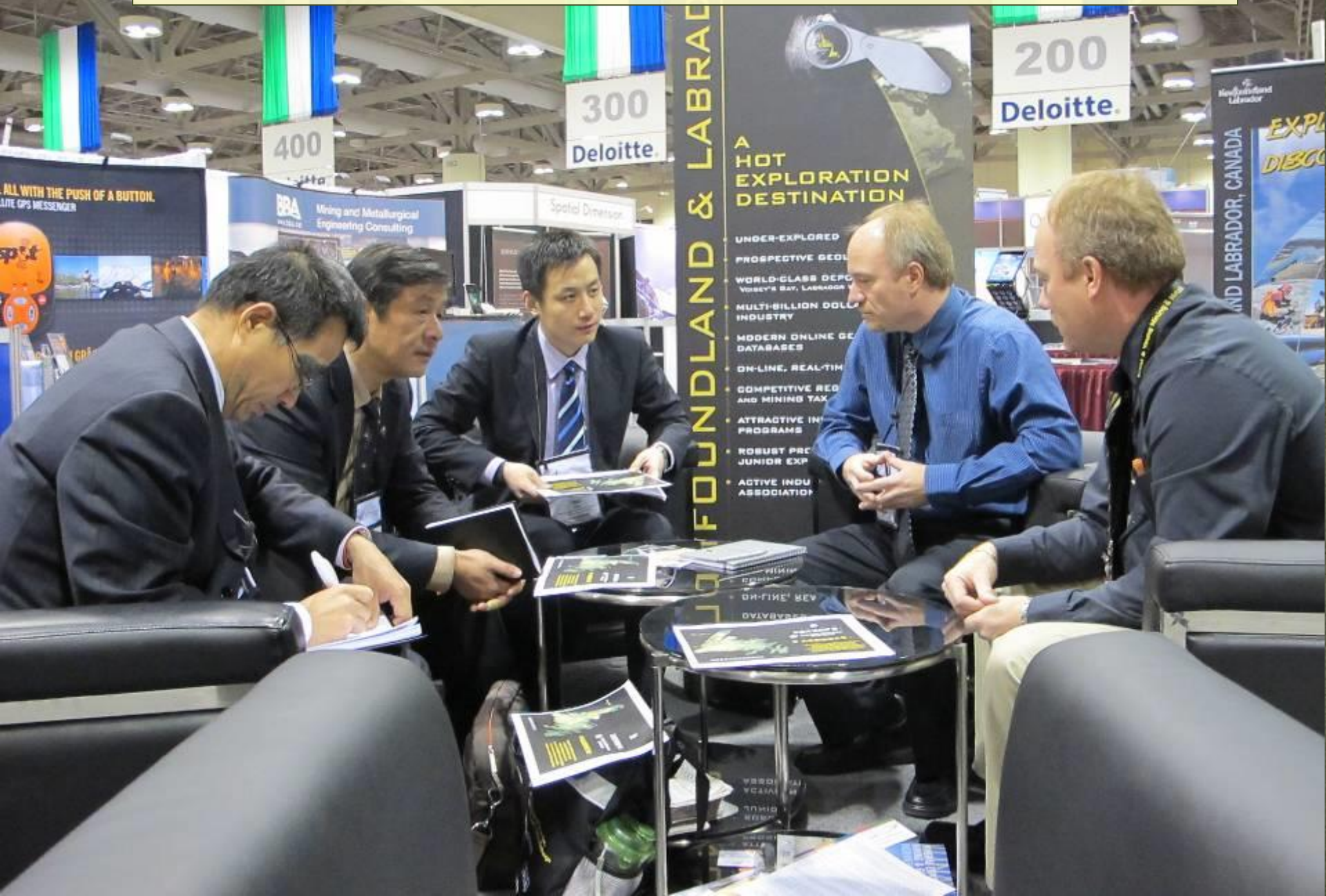
Prospector of the Year Award

For 2006

Donated to the

Matty Mitchell Room

Newfoundland Prospectors meet with International Delegates at the PDAC Conference 2011, Toronto



The Matty Mitchell Prospectors Resource Room



Prospector Nath Noel Demonstrates how to carve soapstone at the PDAC Conference 2009 Toronto

The Matty Mitchell Prospectors Resource Room



**New Prospectors selling their first property
PDAC Conference, 2008, Toronto**



**Chilean
Rescue
Capsule
PDAC'11**

The Matty Mitchell Prospectors Resource Room provides prospectors with

**TECHNICAL AND LOGISTICAL SUPPORT AT
MINERAL INDUSTRY TRADE SHOWS AND
CONFERENCES**

Atlantic Rock Room -- PDAC (Toronto) -- March

**Mineral Resources Review (Department of Natural Resources)
St. John's, November
Prospectors' Tent and Core Shack**

The Matty Mitchell Prospectors Resource Room

Mineral Resources Review, St. John's



SEG Volunteers



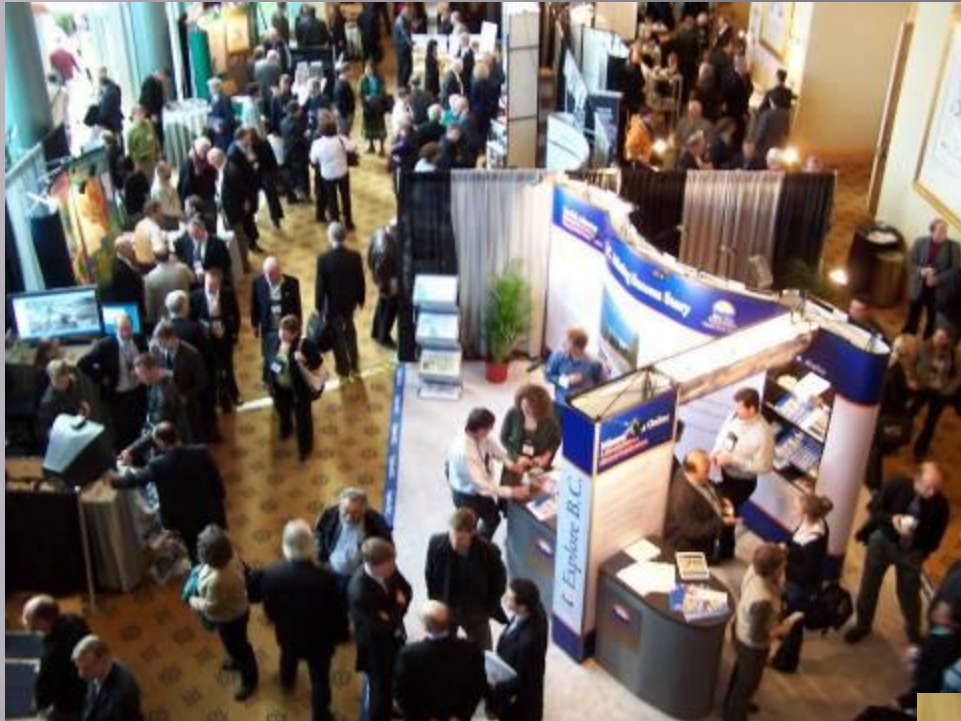
The Matty Mitchell Prospectors Resource Room provides prospectors with

TECHNICAL AND LOGISTICAL SUPPORT AT MINERAL INDUSTRY TRADE SHOWS AND CONFERENCES

Atlantic Rock Room -- PDAC (Toronto)

Prospectors' Tent/Core Shack -- Mineral Resources Review
(St. John's)

Cordilleran Roundup
Vancouver, January
Newfoundland and Labrador Rock Room



Prospectors' Displays Exploration Roundup, Vancouver



The Matty Mitchell Prospectors Resource Room provides prospectors with

TECHNICAL AND LOGISTICAL SUPPORT AT MINERAL INDUSTRY TRADE SHOWS AND CONFERENCES

Atlantic Rock Room -- PDAC (Toronto)

Prospectors' Tent /Core Shack -- CIMM (St. John's)

NL Rock Room -- Roundup
(Vancouver)

**One-on-one advice and aid with networking
on-site at conferences and trade shows**

Workshops

The Matty Mitchell Room, Mining Industry NL and DNR work in partnership to deliver one-day prospector workshops in rural and urban areas across Newfoundland and Labrador



EXPLORE THE OUTDOORS

A free information session and workshop on

PROSPECTING IN EASTERN NEWFOUNDLAND

- Prospecting tips and techniques
- Resources to help prospectors
- Rock and mineral samples
- Fossils
- Overview of Newfoundland geology
- How to stake a claim
- Mineral uses
- Economic impact of mining and exploration and more

Saturday, May 14th
Holiday Inn (Salon D), St. John's

Workshop runs from 9:00 am to 5:00 pm
(with a break from 12:30 to 1:30 pm)

For information call:
709-729-2120, -729-6193 or -722-9542
email: matty@ceppo.geosurv.gov.nf.ca or
director@nlcmr.ca

Sponsored by:
The Matty Mitchell Prospectors Resource Room and
The Newfoundland and Labrador Chamber of Mineral Resources



The Matty Mitchell Prospectors Resource Room



2005 PUBLIC OUTREACH INITIATIVE
Explore NL Trade Show

Prospectors Guides

The Matty Mitchell Resource Room prepares and coordinates a series of guides to prospecting in Newfoundland and Labrador

A PROSPECTOR'S GUIDE TO
Mississippi-Valley Type (MVT)
Lead-Zinc Deposits
in Newfoundland
and Labrador

A PROSPECTOR'S GUIDE TO
URANIUM DEPOSITS
IN
NEWFOUNDLAND AND
LABRADOR

MATTY MITCHELL PROSPECTORS RESOURCE ROOM
INFORMATION CIRCULAR NUMBER 4

A PROSPECTOR'S GUIDE TO
VMS DEPOSITS
IN NEWFOUNDLAND
AND LABRADOR

A GUIDE TO
Prospecting in
Newfoundland
and Labrador

Contributed by:

Matty Mitchell, Prospector
Information Circular Number 1

A GUIDE TO
Geochemistry in
Newfoundland
and Labrador

With contributions from:
Dr. Steve Amor, Geological Survey
Department of Natural Resources
Newfoundland and Labrador

Matty Mitchell Prospector
Information Circular Number 2

A PROSPECTOR'S GUIDE TO
GROOMING AND
OPTIONING A PROPERTY

Reproduced from the
Matty Mitchell Room Web-site
revised and updated, March 2000

Matty Mitchell Prospector's Resource Room
Information Circular Number 2

A PROSPECTORS GUIDE TO
Epithermal Gold and Silver
in
Newfoundland and Labrador

Contributed by:

Matty Mitchell Prospector's Resource Room
Information Circular Number 8



First Floor - Natural Resources Building,
Geological Survey of Newfoundland and Labrador
50 Elizabeth Avenue • PO Box 8700 • A1B 4J6
St. John's • Newfoundland • Canada
Telephone: 709-729-3228, 709-729-6100 • e-mail: mattym@gsnl.ca
Website: http://www.nr.gov.nl.ca/tr/mines/prospect/matty_mitchell/index.html



First Floor - Natural Resources Building,
Geological Survey of Newfoundland and Labrador
50 Elizabeth Avenue • PO Box 8700 • A1B 4J6
St. John's • Newfoundland • Canada
Telephone: 709-729-3228, 709-729-6100 • e-mail: mattym@gsnl.ca
Website: http://www.nr.gov.nl.ca/tr/mines/prospect/matty_mitchell/index.html



First Floor - Natural Resources Building,
Geological Survey of Newfoundland and Labrador
50 Elizabeth Avenue • PO Box 8700 • A1B 4J6
St. John's • Newfoundland • Canada
Telephone: 709-729-3228, 709-729-6100 • e-mail: mattym@gsnl.ca
Website: http://www.nr.gov.nl.ca/tr/mines/prospect/matty_mitchell/index.html



First Floor - Natural Resources Building,
Geological Survey of Newfoundland and Labrador
50 Elizabeth Avenue • PO Box 8700 • A1B 4J6
St. John's • Newfoundland • Canada
Telephone: 709-729-3228, 709-729-6100 • e-mail: mattym@gsnl.ca
Website: http://www.nr.gov.nl.ca/tr/mines/prospect/matty_mitchell/index.html

Wealth for Prospectors

New ideas

come from

Old data

Natural Resources Geoscience Databases

Provincial Department of Natural Resources - A great storehouse of geoscientific data

Natural Resources Geoscience Databases

Provincial Department of Natural Resources - A great storehouse of geoscientific data

The Resource Room helps put this government-funded geoscience data and other pertinent information into the hands of prospectors

Natural Resources Geoscience Databases

Provincial Department of Natural Resources - A great storehouse of geoscientific data

The Resource Room helps put this government-funded geoscience data and other pertinent information into the hands of prospectors free.

Geoscience data and support is available to prospectors of all levels of expertise throughout the year.

Natural Resources Geoscience Databases

Provincial Department of Natural Resources - A great storehouse of geoscientific data

The Resource Room helps put this government-funded geoscience data and other pertinent information into the hands of prospectors free.

Geoscience data and support is available to prospectors of all levels of expertise throughout the year.

All interactions with prospectors are carried out in strict confidentiality.

The Mining Sequence



WITHOUT THIS...

... LITTLE OR NONE OF THIS \$\$

Importance of the Mineral Industry in Newfoundland and Labrador

Exploration Expenditures

2013 (p) - \$104,000,000

2014 (f) - \$84,000,000

Mineral Shipments – Value

2013(e) – \$3.7 Billion

2014(f) - \$3.8 Billion

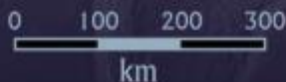
(Approx 8.6% of the province's GDP)

Employment

2013(e) - 11,252

2014(f) – 8,106

Revenues from mineral exploration & mining provide funding for government to help address public priorities such as education, health care, etc.



Importance of Mineral Exploration

Revenues from mineral exploration & mining provide funding for governments goals to address public priorities such as education & health care.

The mineral exploration industry provides family-supporting employment and business opportunities in communities across Newfoundland & Labrador.

Prospect discovery is the first step in the mineral exploration process. A successful exploration industry needs prospectors & their prospects.

Importance of Mineral Exploration

Revenues from mineral exploration & mining provide funding for governments goals to address public priorities such as education & health care.

The mineral exploration industry provides family-supporting employment and business opportunities, particularly in rural communities across Newfoundland & Labrador.

Prospect discovery is the first step in the mineral exploration process. A successful exploration industry needs prospectors & their discoveries.

No mineral exploration means no mines!



Over the past 10 years, the Matty Mitchell Room project has evolved into a major venture that facilitates effective delivery of a wide range of joint government - industry initiatives related to prospecting.



EXPLORE THE OUTDOORS

A free information session and workshop on

PROSPECTING IN LABRADOR

- Prospecting tips and techniques
- Resources to help prospectors
- Rock and mineral identification and samples
 - Overview of Labrador geology
- Prospecting environments in Labrador
 - How to stake a claim

and more

Saturday, August 27: Labrador West

The Carol Inn (Neal Room, No.1)

9 am to 5 pm (with a break from 12:30 to 1:30 pm)

Monday, August 29: Happy Valley - Goose Bay

The Labrador Inn (Menihok Room)

1 pm to 9 pm (with a break from 5 to 6 pm)

For information call:

709-729-2120, -722-9542, or -729-6193

email: director@nlcmr.ca or matty@zeppo.geosurv.gov.nf.ca

Sponsored by: The Newfoundland and Labrador Chamber of Mineral Resources
and the Matty Mitchell Prospectors Resource Room

2005 PROSPECTING WORKSHOP INITIATIVE

The Matty Mitchell Prospectors Resource Room

A public-private sector partnership working for the Newfoundland and Labrador prospecting community



Annual Report for 2007

Matty Mitchell Prospectors Resource Room; Matty Mitchell Sample Library
First Floor, Natural Resources Building
Geological Survey of Newfoundland and Labrador
50 Elizabeth Avenue, PO Box 8700 A1B 4J6
Telephone 709-729-2120; Fax: c/n 709-729-4491
Email matty@gov.nl.ca

The Resource Room provides an annual report of its activities, which is available online

For further information about the Matty Mitchell Room, contact

Pat O'Neill: Matty Mitchell Room

Geologist

Tel: (709) 729-2120

E-mail: matty@gov.nl.ca

Phil Saunders: Geological Survey

Exploration Consultant

Tel: (709) 729-6193

E-mail: philsaunders@gov.nl.ca

Sean O'Brien: Geological Survey

Chair, Matty Mitchell Room Committee

Tel: (709) 729-2775

E-mail: seanobrien@gov.nl.ca

Ed Moriarity: MINL

Mining Industry NL

Executive Director

Tel: (709) 722-9542

E-mail: director@nlcmr.ca

Or internet search 'Matty Mitchell Room'

Newfoundland and Labrador Prospectors Association

- First AGM in Gander; Sep, 2012
- Meetings held across the province
- Membership 260 and growing
- Representing over 100 communities
- Coordinator / president- Norm Mercer
- Advocacy group for prospectors
- Ongoing meetings and workshops
- Join the NLPA (\$20)!



Visit the
The Matty Mitchell
Prospectors Resource Room

**A GREAT WAY TO
KEEP IN TOUCH AND
CONTINUE YOUR
PROSPECTING
EDUCATION...**

**YOU NEVER KNOW YOUR LUCK
IN THE GREAT OUTDOORS...**

**WHY NOT
LEARN ABOUT
PROSPECTING!**

come see us at the
**Matty Mitchell
Prospectors Resource Room**

Main floor, Natural Resources Bldg.,
50 Elizabeth Avenue, St. John's,
Newfoundland and Labrador

Telephone: (709) 729-2120, Fax: (709) 729-4491

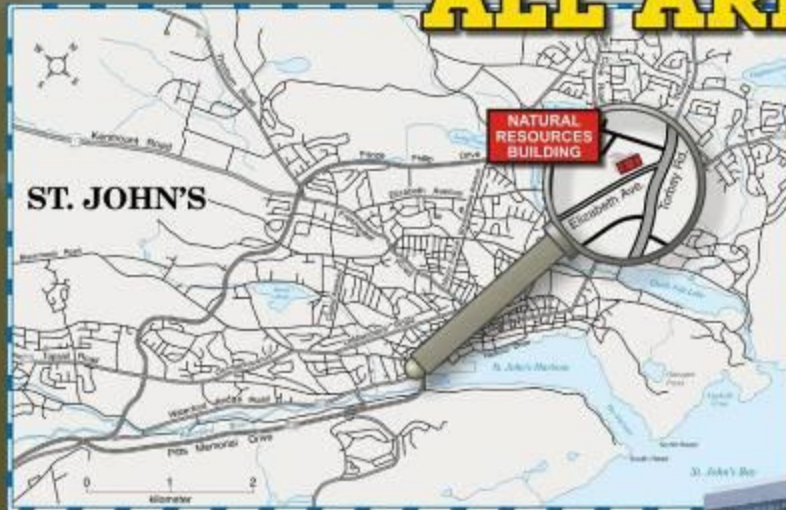
E-mail: matty@gov.nl.ca

www.nr.gov.nl.ca/mines&en/geosurvey/matty_mitchell/

Matty Mitchell - prospector, trapper, woodsman and guide: discoverer of the Buchans Mines

The Matty Mitchell Prospectors Resource Room

ALL ARE WELCOME!



Matty Mitchell Prospectors Resource Room

The Matty Mitchell Prospectors Resource Room is a government-industry-university partnership developed by the Newfoundland and Labrador Department of Natural Resources to provide assistance to this province's prospecting community. The Resource Room delivers technical support as well as advice, mentoring and promotional services to prospectors, rock hounds, mineral collectors and other interested members of the public from all parts of the province. Opened in 1998, the facility is located in the department's Geological Survey and is dedicated to pioneering prospector Matty Mitchell.

