

EL# 98-116-01-ES  
RELEASED: MARCH 19, 2003

VULCAN MINERALS INC.

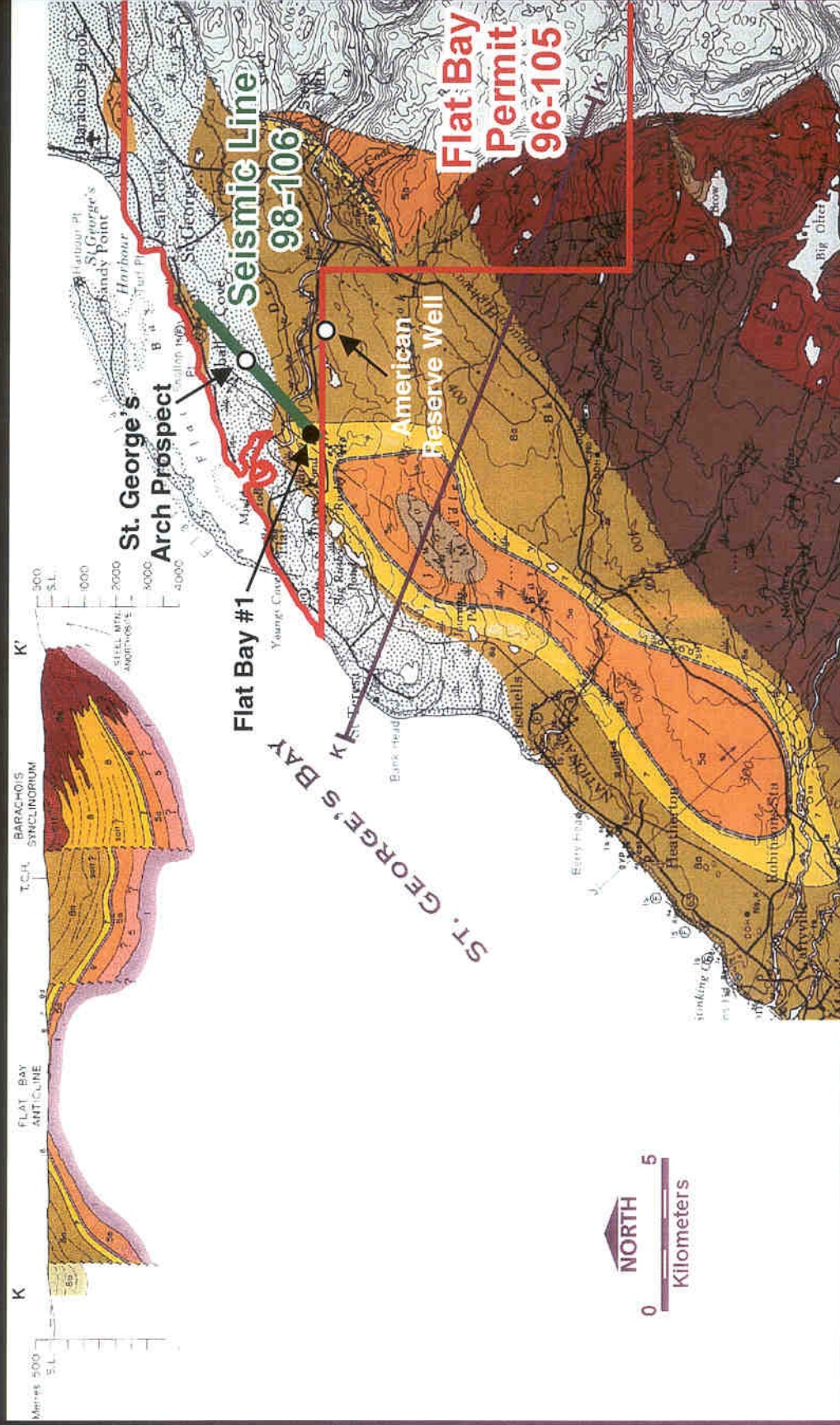
SEISMIC LINE 98-106  
INTERPRETATION

Patrick J. Laracy, P. Geo.  
January 2000

### **Seismic Line 98-106-Interpretation**

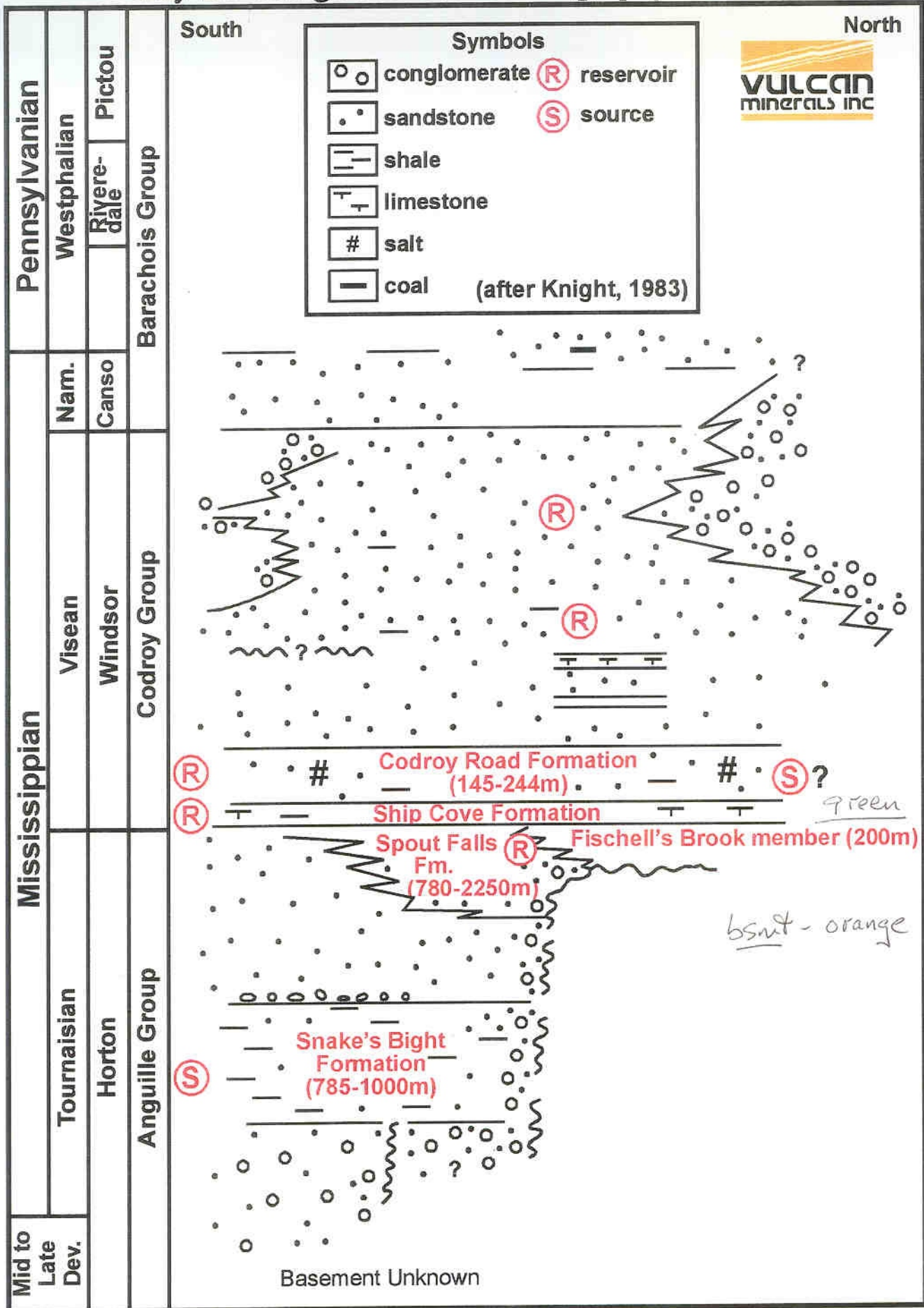
The line was shot along the quarry road from the Domtar gypsum quarry towards the town of St. Georges. The purpose of the line was to image the northeast plunge of the Flat Bay Anticline. The plunge is relatively gentle, though some structuring is evident. The first good reflection is interpreted to be the Ship Cove Lst overlain by Codroy Fm evaporites and clastics. The St. George Arch target is evident at this horizon (green). The pre-Carboniferous is defined by a character change in the data at the orange horizon. Between these two horizons we interpret the presence of the Fischells Brook conglomerate sandstone which may change facies from alluvial material at Flat Bay #1 to braided material towards the St. Georges Arch proposed location. Reservoir quality may improve as a result.

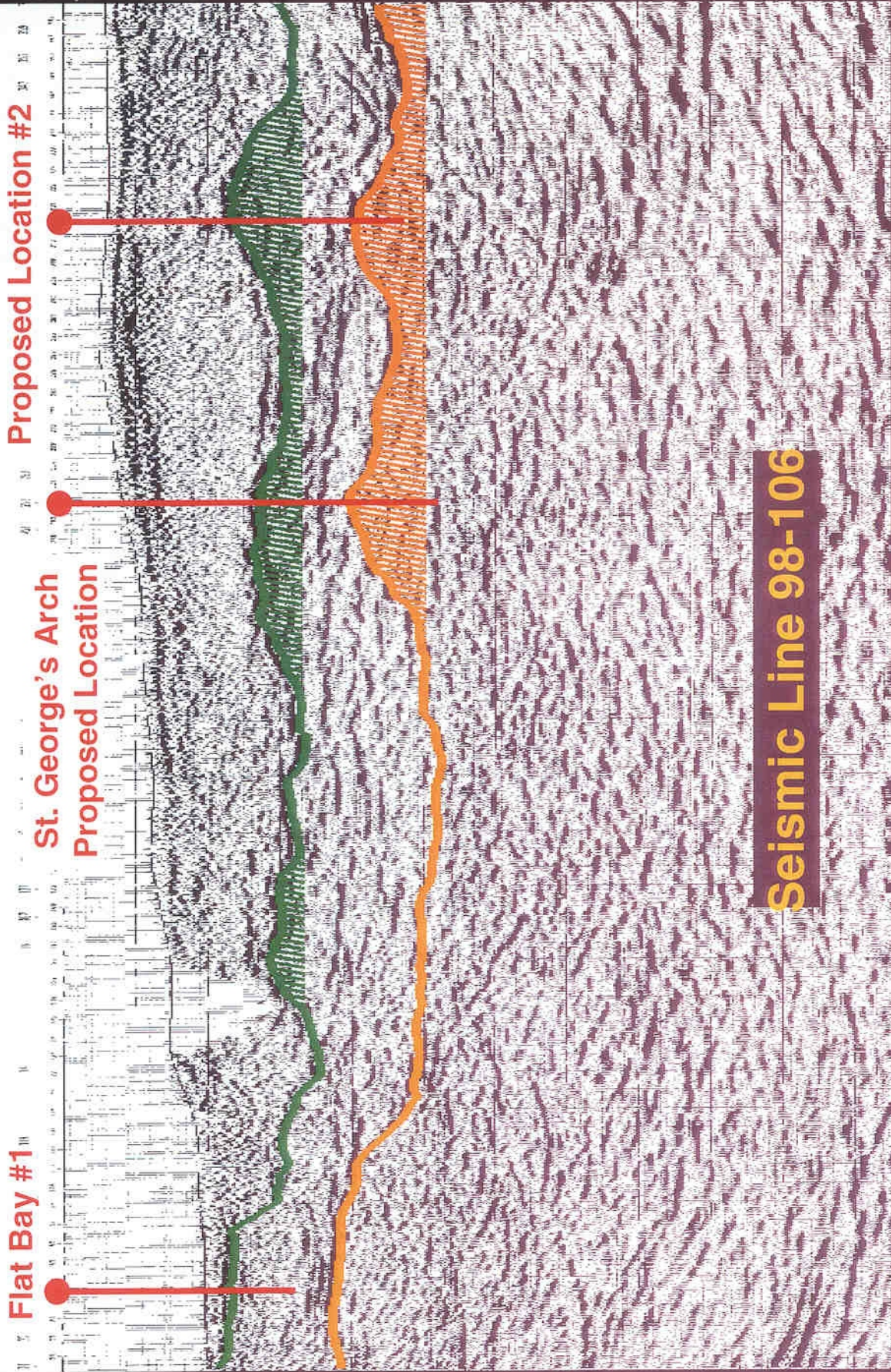
Patrick J. Laracy, P. Geo.



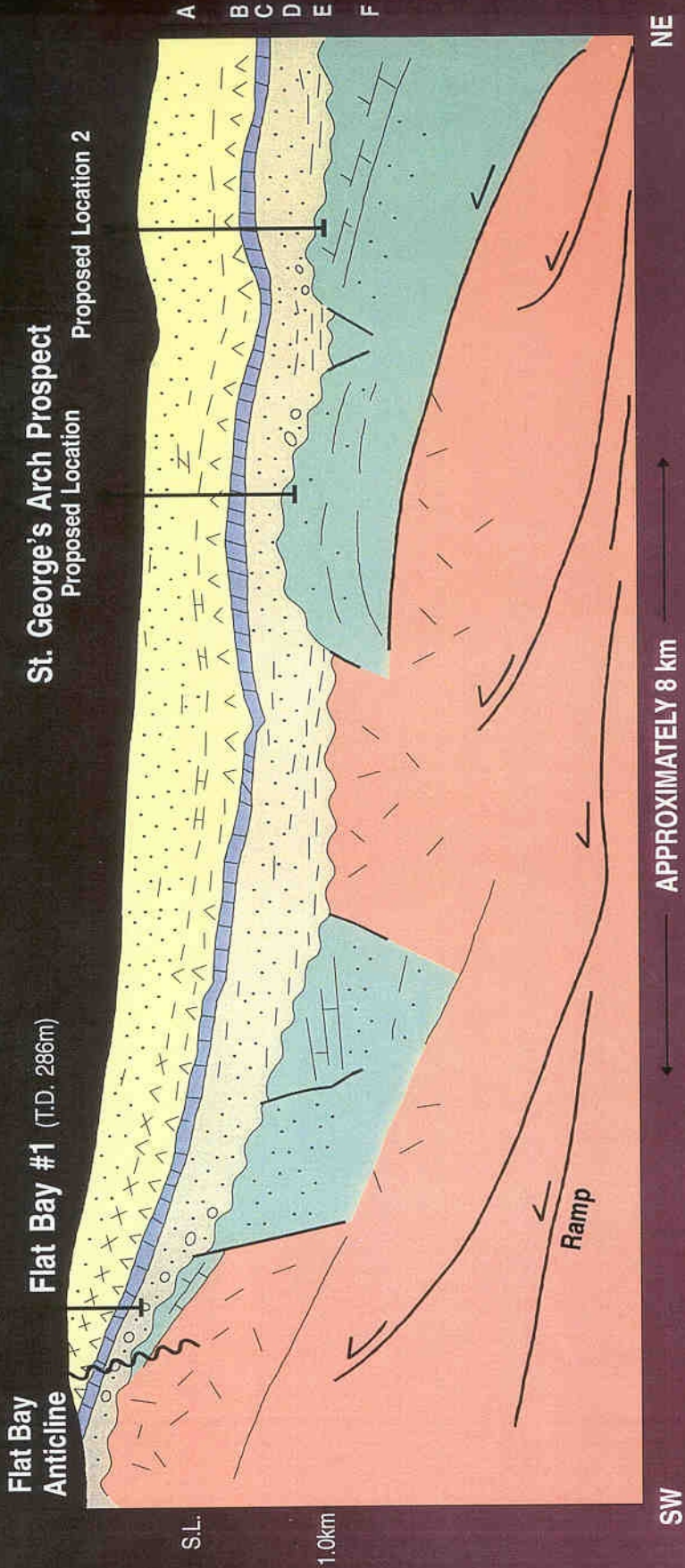
Northern Bay St. George Basin Geology

# Bay St. George Sub-basin Stratigraphy





**Seismic Line 98-106**



- A Codroy Group clastic - non-marine
- B Codroy Group evaporites - gypsum (seal)
- C Ship Cove Limestone - shallow marine (reservoir)
- D Anguille - Fischells conglomerate and equivalent sandstone (reservoir)
- E Anguille - lacustrine shales - lake beds - Snake's Bight Formation (source)
- F Pre-Carboniferous crystalline basement (schematic only)
- F Pre-Carboniferous - Cambro-Ordovician allocthonous sediments (source - reservoir?) (Schematic only)

**Schematic Geological Profile Along Seismic Line 98-106**