



Final Well Report Port au Port #3

**PDIP Ref. GHS-0001-OPW-2-REP-0011
Rev. 0**

Submitted by

PDI Production Inc.
2nd Floor Baine Johnston Centre
Suite 201
10 Fort William Place
St John's, NL
A1C 1K4

July 2008

This document is confidential. Neither the whole nor any part of this document may be disclosed to any third party without the prior written consent of PDI Production (PDIP) Inc. All rights reserved. Neither the whole nor any part of this document may be reproduced, stored in any retrieval system or transmitted in any form or by any means (electronic, mechanical, reprographic, recording or otherwise) without the prior written consent of PDI Production Inc, the copyright owner.



Report Approval Cover Sheet

Report Title:	Final Well Report – Port au Port #3
Project Name:	Garden Hill South
Client:	n/a
Client Ref:	n/a
PDIP Ref:	GHS-0001-OPW-2-REP-0011

Approval Record

Rev. No.	Date	Prepared	Reviewed	Approved
0	July 4, 2008	K. Batten Hender	T. Young S. Abdurrahman	M. Hibbert

This document is confidential. Neither the whole nor any part of this document may be disclosed to any third party without the prior written consent of PDI Production (PDIP) Inc. All rights reserved. Neither the whole nor any part of this document may be reproduced, stored in any retrieval system or transmitted in any form or by any means (electronic, mechanical, reprographic, recording or otherwise) without the prior written consent of PDI Production Inc, the copyright owner.



Report Record of Revision

Report Title:	Final Well Report – Port au Port #3
Project Name:	Garden Hill South
Client:	n/a
Client Ref:	n/a
PDIP Ref:	GHS-0001-OPW-2-REP-0011

Record of Revision

Rev. No.	Date	Revision Details
0	July 4, 2008	Original issue.

Contents

Report Approval Cover Sheet	i
Report Record of Revision	ii
Contents	iii
1. INTRODUCTION	1
1.1 Map	1
1.2 General Information	1
1.3 Difficulties and Delays	3
2. DRILLING OPERATIONS	3
2.1 Elevation	3
2.2 Total Depth	3
2.3 Spud Date	3
2.4 Date Drilling Completed	3
2.5 Rig Release Date	3
2.6 Well Status	3
2.7 Hole Sizes and Depths	3
2.8 Bit Records	3
2.9 Casing and Cementing Record	3
2.10 Sidetracked Hole	3
2.11 Drilling Fluid	3
2.12 Fluid Disposal	3
2.13 Fishing Operations	4
2.14 Well Kicks	4
2.15 Formation Leak-Off Tests	4
2.16 Time Distribution	4
2.17 Deviation Plot	4
2.18 Abandonment/Suspension Plugs	4

2.19	Well Schematic	4
2.20	Fluid Samples	4
2.21	Composite Well Record	5
3.	GEOLOGY	5
4.	WELL EVALUATION	5
5.	OTHER	5

APPENDIX A: Legal Survey Plan

1. Introduction

This report has been produced by PDI Production Inc. (PDIP), the current operator of the Petroleum Lease containing PAP#3 (Lease #2002-01). It has been more than six years since the well was drilled by the previous operator, Canadian Imperial Venture Corporation (CIVC), and in the intervening period, a significant quantity of information pertaining to the well has been lost. As a result, parts of this report may be incorrect or incomplete as they are based on limited data.

Port au Port #3 (PAP#3) was intended as an appraisal well, as a follow-up to the Port au Port #1 well that discovered the Garden Hill South (GHS) field on the Port au Port Peninsula.

Drilling operations were limited to the drilling and setting of conductor casing, using only a water well rig contracted from P.J. Sullivan. This was undertaken sometime between May and August 2001. Because operations were limited to drilling the conductor, no Daily Drilling Reports were kept; therefore much of the information normally reported in a Final Well Report is not applicable to PAP#3.

1.1 Map

A map showing the well location is provided in Figure 1.

1.2 General Information

Well Name: Port au Port #3

Petroleum Lease: Permit #93-102

Drilling Program Approval: DPA 2001-117-02

Authority to Drill a Well: ADW 2001-117-02-01

Well Co-ordinates:	N 5373087.860	48° 29' 21.78995"
	E 335563.576	59° 13' 32.05740"

Surveying System: WGS-84

Drilling Rig: water well drilling rig



Figure 1: Map of Port au Port Peninsula Showing Location of Port au Port #3 Well

1.3 Difficulties and Delays

There is no information available pertaining to difficulties or delays.

2. Drilling Operations

2.1 Elevation

Ground level at the well site is 212.4 m above mean sea level.

2.2 Total Depth

The total depth of the well is 30 m.

2.3 Spud Date

Technically, the well was not spudded.

2.4 Date Drilling Completed

Unknown.

2.5 Rig Release Date

Not applicable.

2.6 Well Status

Suspended; the well was never spudded.

2.7 Hole Sizes and Depths

The conductor casing is 508 mm in diameter. The depth was never recorded.

2.8 Bit Records

Numbered drill bits were not used in this operation.

2.9 Casing and Cementing Record

The hole was cased with 508 mm conductor casing, set at 30 m. The casing weight is 197.90 kg/m and its grade is X-52. It was cemented with surface grouting.

2.10 Sidetracked Hole

There were no sidetracking operations.

2.11 Drilling Fluid

The well was drilled using water only.

2.12 Fluid Disposal

There was no downhole disposal of drilling fluids or cuttings.

2.13 Fishing Operations

No fishing operations were conducted.

2.14 Well Kicks

No kicks were experienced.

2.15 Formation Leak-Off Tests

No formation leak-off tests were conducted.

2.16 Time Distribution

No information on the time distribution is available.

2.17 Deviation Plot

No deviation surveys were conducted.

2.18 Abandonment/Suspension Plugs

No plugs were placed in the well.

2.19 Well Schematic

A well schematic diagram is presented in Figure 2.

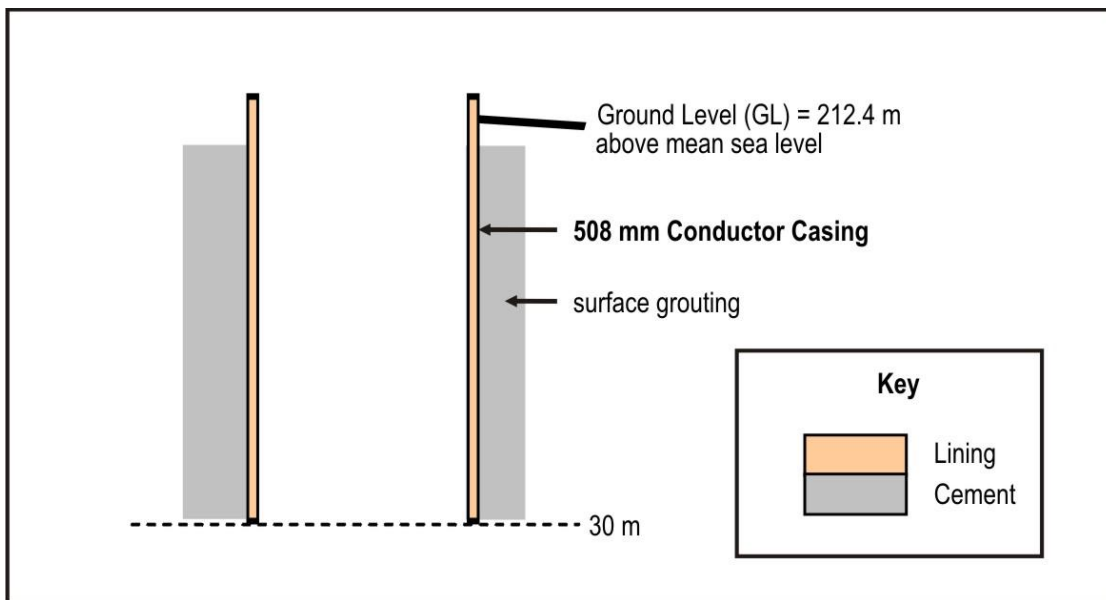


Figure 2: Well Schematic for PAP#3.

2.20 Fluid Samples

No fluid samples were collected.

2.21 Composite Well Record

Not applicable.

3. Geology

No information about the geology was recorded. No cuttings or cores were collected.

4. Well Evaluation

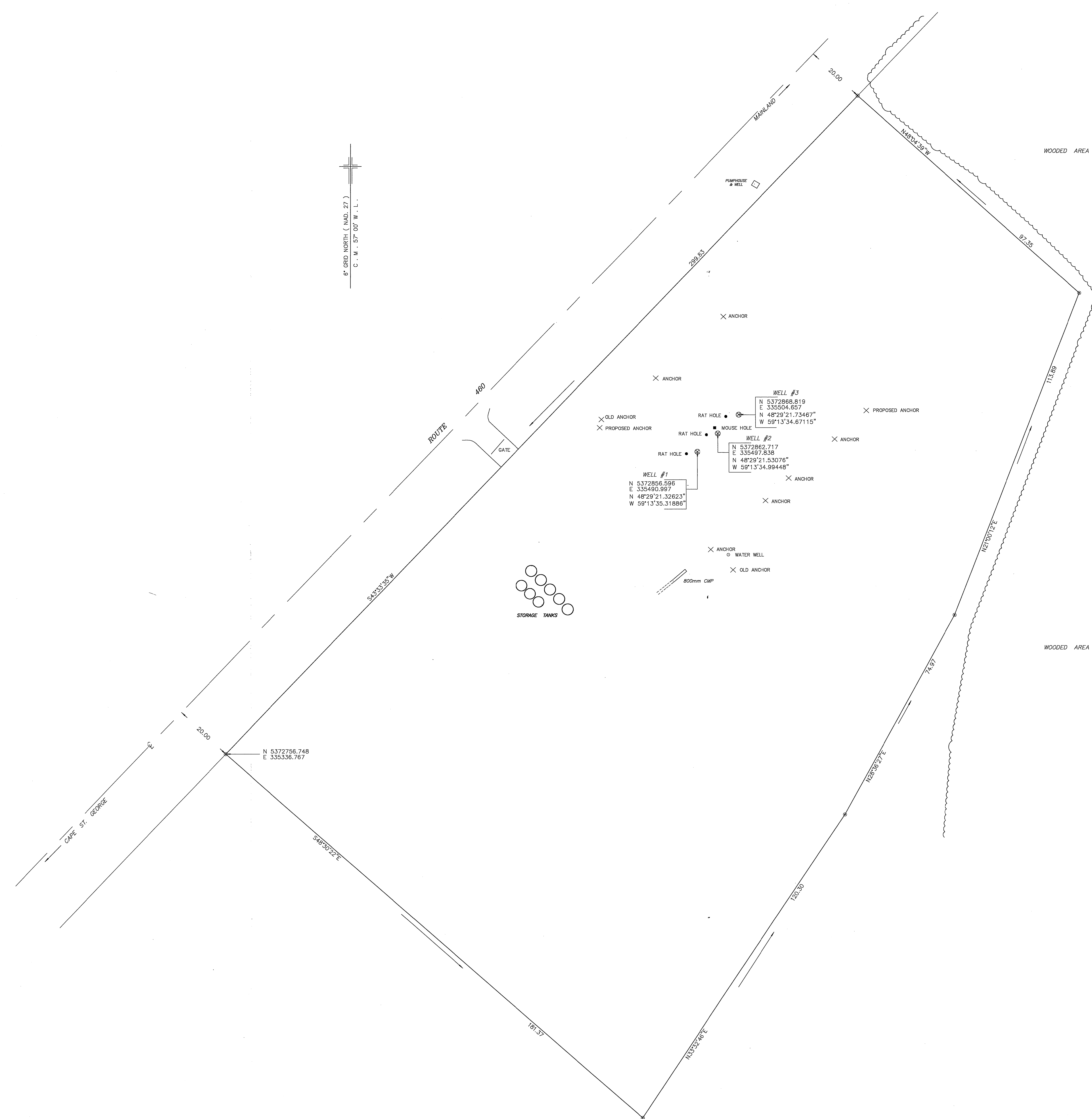
No information is available pertaining to well evaluation. No logging, seismic surveying, or testing was undertaken.

5. Other

There is no additional information available for this well. No logging, surveying, coring, or sampling was conducted.

APPENDIX A:

Legal Survey Plan



WELL COORDINATES IN WGS-84

WELL # 1	N 5373075.623	E 335549.916
	N 48° 29' 21.38107"	W 59° 13' 32.70513"
WELL # 2	N 5373081.743	E 335556.757
	N 48° 29' 21.58559"	W 59° 13' 32.38074"
WELL # 3	N 5373087.860	E 335563.576
	N 48° 29' 21.78995"	W 59° 13' 32.05740"

LEGEND

- RAT HOLES
- MOUSE HOLE
- MAIN WELL
- WELL
- ANCHORS
- PLACED IRON PIN
- PROPERTY DEALT WITH

APPLIED SCALE FACTOR = 0.999933

YATES AND WOODS LTD. NEWFOUNDLAND LAND SURVEYORS CO-OP BLDG., 5 PARK STREET CORNER BROOK, Nfld. A2H 6E3 TEL. 639-9177	P.O. BOX 434 TEL. 639-9177
EXISTING SITE PLAN FOR CANADIAN IMPERIAL VENTURE CORP., GARDEN HILL, ROUTE 460, CAPE ST. GEORGE, Nfld.	
SCALE: 1 : 500	DWG. NO. 01023-1
DATE: MAY 31, 2001	

