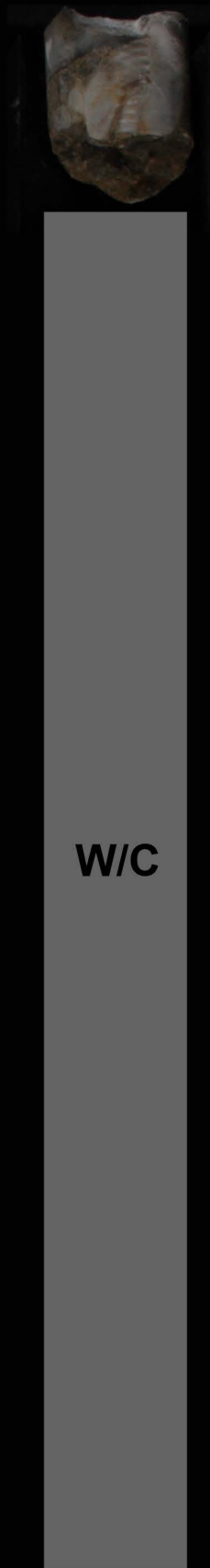


**Appendix IX  
Core Photos**

200.50m

201.00m

201.50m

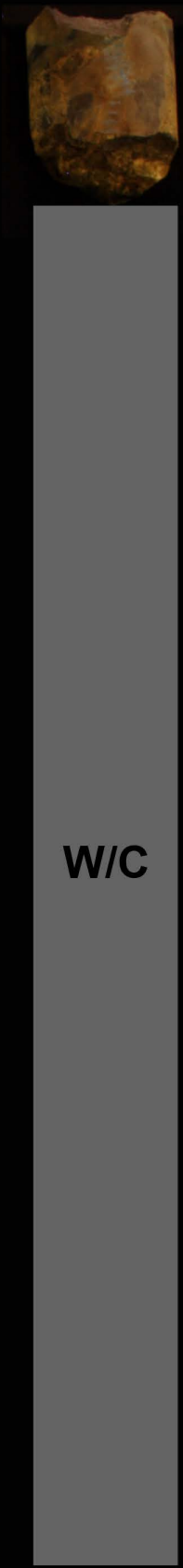
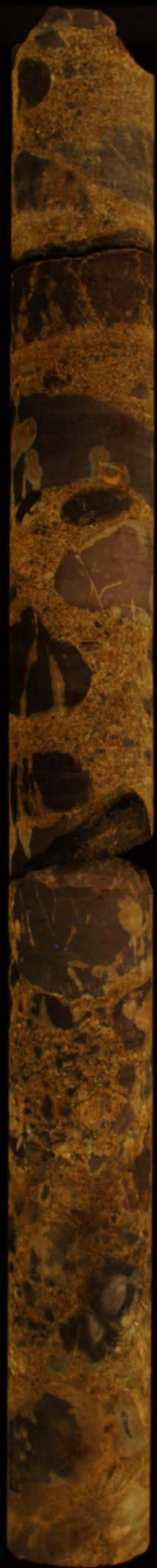


W/C

200.50m

201.00m

201.50m



199.00m

199.50m

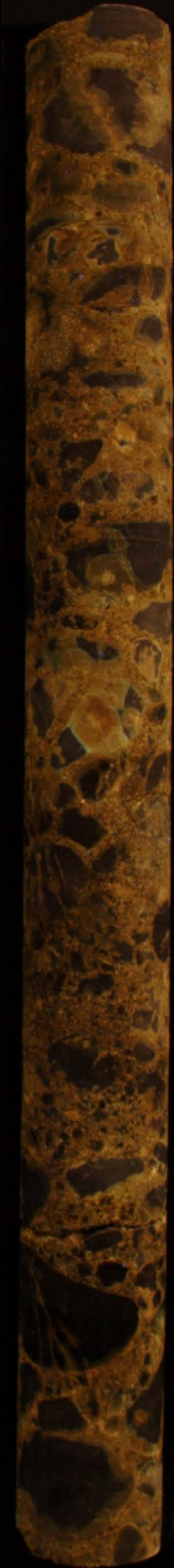
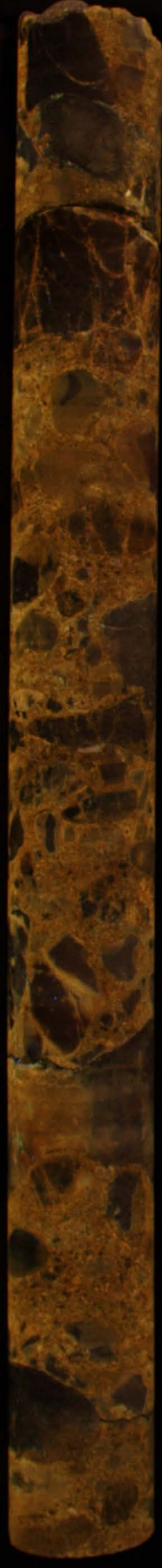
200.00m



199.00m

199.50m

200.00m



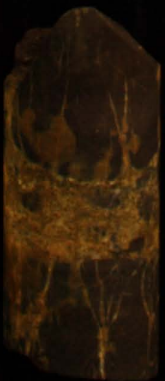
198.00m

198.50m



198.00m

198.50m



196.00m

196.50m

197.00m





196.00m

196.50m

197.00m



194.50m

195.00m

195.50m



W/C

W/C



194.50m

195.00m

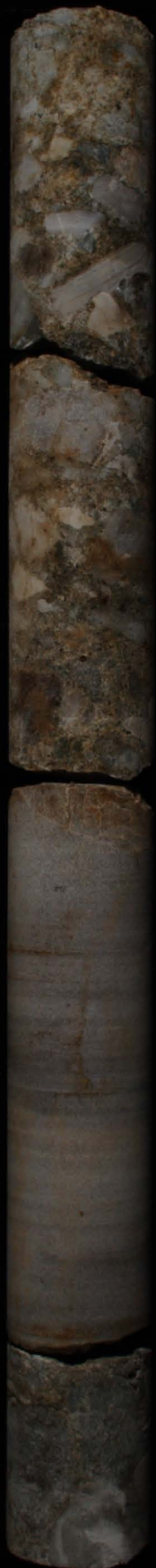
195.50m



193.00m

193.50m

194.00m



193.00m

193.50m

194.00m



191.50m

192.00m

192.50m

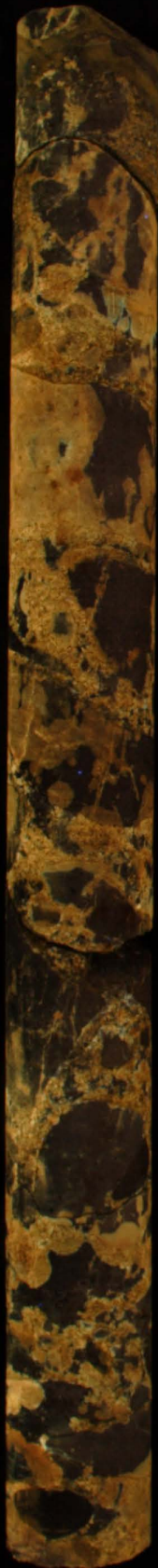


W/C

191.50m

192.00m

192.50m



W/C

190.40m

190.50m

191.00m





190.40m

190.50m

191.00m



**Appendix X**  
**Core Analysis Report**



## SUMMARY OF CONVENTIONAL CORE ANALYSES RESULTS

Conventional Oven Dried at 95°C

Vulcan Minerals Inc.  
 Flat Bay Test Hole No. 6  
 Western Newfoundland

Sample Number	Sample Depth, m	Permeability, millidarcys to Air	Porosity, fraction	Grain Density, kg/m <sup>3</sup>	Residual Fluid Saturations	
					Oil	Water
<b>Conventional 1" plugs.</b>						
1-1	191.00	0.018	0.034	2690	0.519	0.185
1-2	194.18	0.115	0.052	2700	0.464	0.535
1-3	198.10	0.046	0.039	2710	0.435	0.426
1-4	198.95	0.038	0.041	2720	0.291	0.538
1-5	201.30	0.147	0.060	2680	0.465	0.395
1-6	201.40	0.225	0.043	2680	0.410	0.449