



Baker Atlas

FILE NO: _____ COMPANY: **YULCAN MINERALS INC.**
 WELL: **FLAT BAY NO. 3**
 APN NO: _____ FIELD: **FLAT BAY**
 PROVINCE: **NEWFOUNDLAND**

Ver: 3.87 LOCATION: LIC: 98-103
 ST. GEORGES BAY LAT 48.383334 N LONG 58.580253 W
 OTHER SERVICES: HDIL-GR

PERMANENT DATUM G.L. _____ ELEVATION 50.0 M
 LOG MEASURED FROM K.B. _____ 3.3 M ABOVE P.D.
 DRILL MEAS. FROM KELLY BUSHING
 ELEVATIONS: KB 53.3 M
 DF _____
 OL 50.0 M

DATE	13-OCT-2005	TRIP	1
SERVICE ORDER	201902		
DEPTH DRILLER	570.5 M		
DEPTH LOGGER	570.2 M		
BOTTOM LOGGED INTERVAL	380.5 M		
TOP LOGGED INTERVAL	SURFACE		
CASING DRILLER	177.8 M	Ø 140.9 M	Ø
CASING LOGGER	140.7 M		
BIT SIZE	189.0 MM		
TYPE OF FLUID IN HOLE	AIR		
DENSITY	N/A	VISCOSITY	N/A
PH	N/A	FLUID LOSS	N/A
SOURCE OF SAMPLE	N/A		
RM AT MEAS. TEMP.	N/A	Ø N/A	Ø
RMF AT MEAS. TEMP.	N/A	Ø	Ø
RMG AT MEAS. TEMP.	N/A	Ø N/A	Ø
SOURCE OF RMF	N/A	RMG	N/A
RM AT BHT	N/A	Ø N/A	Ø
TIME SINCE CIRCULATION	N/A		
MAX. RECORDED TEMP.	4.0 DEGC		
EQUIP. NO.	HSL 8816	SARINIA	
RECORDED BY	Y. OBIRI		
WITNESSED BY	P. LAROCK		

IN MAKING INTERPRETATIONS OF LOGS OUR EMPLOYEES WILL GIVE CUSTOMER THE BENEFIT OF THEIR BEST JUDGEMENT. BUT SINCE ALL INTERPRETATIONS ARE OPINIONS BASED ON INFERENCES FROM ELECTRICAL OR OTHER MEASUREMENTS, WE CANNOT, AND WE DO NOT GUARANTEE THE ACCURACY OR CORRECTNESS OF ANY INTERPRETATION. WE SHALL NOT BE LIABLE OR RESPONSIBLE FOR ANY LOSS, COST, DAMAGES, OR EXPENSES WHATSOEVER INCURRED OR SUSTAINED BY THE CUSTOMER RESULTING FROM ANY INTERPRETATION MADE BY ANY OF OUR EMPLOYEES.

BOREHOLE RECORD		
BIT SIZE	FROM	TO
158.0 MM	140.87 M	570.5 M

CASING RECORD				
SIZE	WEIGHT	GRADE	FROM	TO
244.5 MM	35.8 KG/M	K-55	0 M	29.01 M
177.8 MM	28.8 KG/M	H-40	29.01 M	140.87 M

REMARKS

RUN 1 TRIP 1: DRILLING COMPLETED: 21:00 HRS. 12-OCT-05
 WELL WAS AIR DRILLED.

TIME ENTERING HOLE: 23:10 HRS. 13-OCT-05
 TIME AT BOTTOM: 23:30 HRS. 13-OCT-05
 TIME LAST ON BOTTOM: 23:50 HRS. 13-OCT-05
 TIME EXITING HOLE: 01:00 HRS. 14-OCT-05

HDIL/ZDL/CN/GR RUN IN COMBINATION.

PORZ AND CNC RECORDED IN LIMESTONE MATRIX.
 SANDSTONE MATRIX ALSO PRESENTED.
 COMPENSATED NEUTRON WAS NOT PRESENTED DUE TO 'AIR FILLED BOREHOLE' ATTENUATED

COM INTEGRATED NEUTRON AND NOT PRESENTED DUE TO AIR FLEED BARREL ATTENUATED RESPONSE.
 SHORT SPACED NEUTRON COUNTS (SSN) PRESENTED SINCE THERE WAS NO FLUID IN THE HOLE. SSN WAS SCALED ONLY FOR DISPLAY PURPOSES.

INTEGRATED BOREHOLE VOLUME TICS EVERY: 0.1, 1.0, & 10.0 M3.
 INTEGRATED CEMENT VOLUME TICS EVERY: 0.1, 1.0, & 10.0 M3.

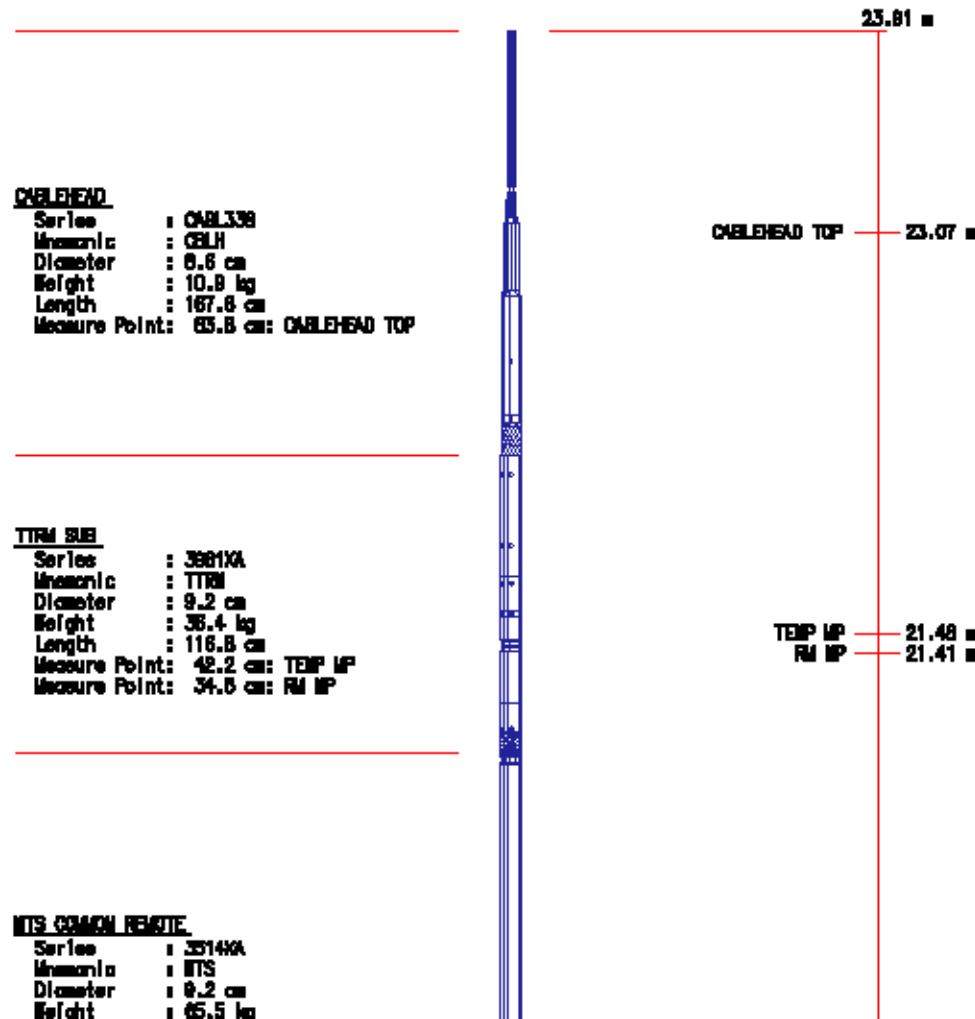
CREW : D.KIRWAN*P.POMERLEAU

EQUIPMENT DATA

RUN	TRIP	TOOL	SERIES NO.	SERIAL NO.	POSITION
1	1	TTRM	3881XA	178328	FREE
1	1	COM REM	3514XA	153384	FREE
1	1	DGR	1328XA	153172	FREE
1	1	KJLT	3823XA	186278	KNUCKLE JOINT
1	1	ZDL E	2228FA	155357	DECENTRALIZED
1	1	ZDL M	2228MA	153038	PND DEVICE X-AXIS
1	1	CN	2446XA	173080	DECENTRALIZED
1	1	HDIL E	1515FA	177888	FREE
1	1	HDIL M	1515MA	187383	25.4 MM STAND-OFF

INSTRUMENT CONFIGURATION

Source File: /dall/a/pom/ruL/RIS/zdl-tdg



Length : 189.5 cm

DIGITAL SPECTRALOG

Series : 13200A
Mnemonic : DSL
Diameter : 9.2 cm
Weight : 64.8 kg
Length : 222.5 cm
Measure Points : 48.8 cm GR MP

GR MP — 17.43 m

COMPENSATED NEUTRON

Series : 24400A
Mnemonic : CN
Diameter : 9.2 cm
Weight : 68.2 kg
Length : 231.4 cm
Source Type : AM24-1BE
Strength : 18 curies
Measure Points : 60.3 cm LSN MP
Measure Points : 68.2 cm SSN MP

LSN MP — 15.43 m

SSN MP — 15.31 m

Z-DENS LOG

Series : 22200A
Mnemonic : ZDL
Diameter : 12.4 cm
Weight : 213.6 kg
Length : 564.6 cm

Source Type : GS137
Strength : 2.0 curies
Measure Point: 107.7 cm: SSD MP
Measure Point: 97.3 cm: OAL / ZSPEC MP



SSD MP — 10.08 m
OAL / ZSPEC MP — 9.85 m

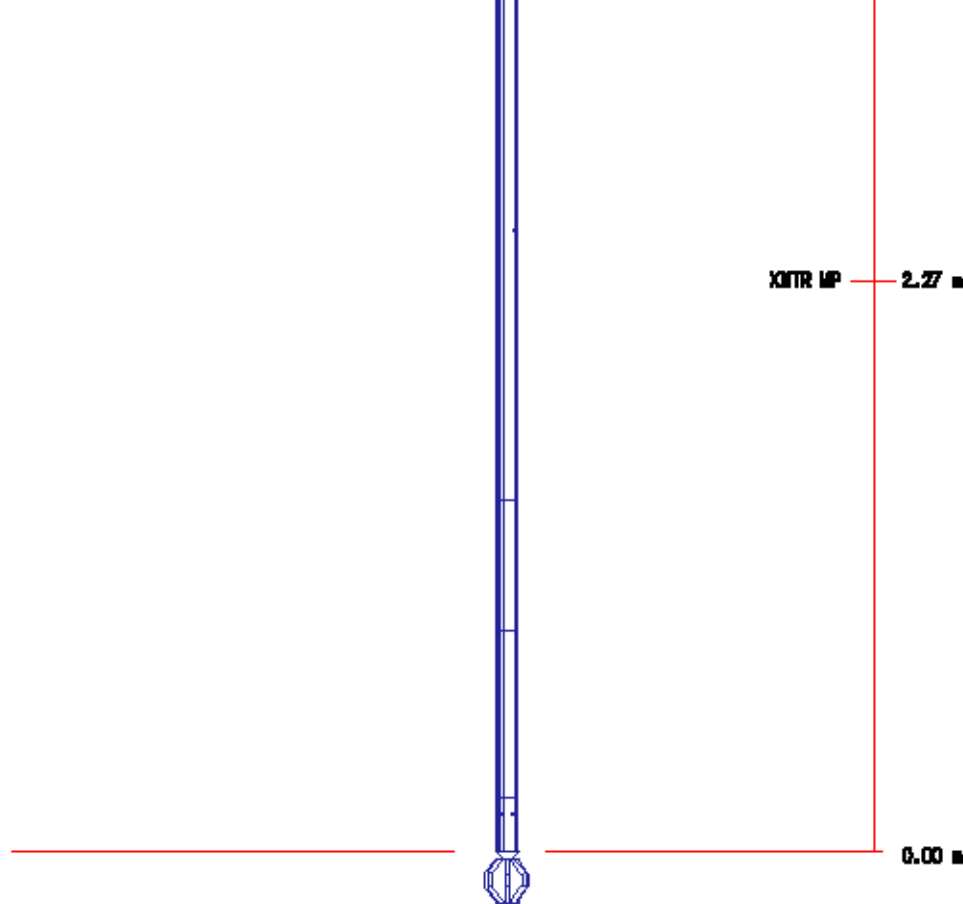
KNUCKLE JOINT

Series : 39230A
Mnemonic : KAJT
Diameter : 8.8 cm
Weight : 21.8 kg
Length : 70.0 cm

HIGH DEFINITION INDUCTION TOOL

Series : 15130A
Mnemonic : HDIL
Diameter : 9.2 cm
Weight : 200.5 kg
Length : 627.0 cm
Measure Point: 423.9 cm: SF MP
Measure Point: 228.5 cm: XMTR MP

SF MP — 4.24 m



TOTAL LENGTH: 24.11 m
 TOTAL WEIGHT: 883.2 kg
 MAX DIAMETER: 16.2 cm

MAIN LOG - UPPER PRESENTATION

ECLIPS 5.01 Dec 17, 2003
 Updates: 1,2,3,32

Perpht /main/59

Cplot 7.09
 Pdf_Cpp /main/16

Fri Oct 14 01:40:20 2005
 Fileview 4.67

PARAMETER AND FILTER SUMMARY REPORT

FILE: /data/pasa/vul_filt/1777.ha05.prm
 LOGGING MODE: DEPTH DIRECTION: UP
 TOP DEPTH: 0.000 m BOTTOM DEPTH: 0.000 m

SYMMETRIC FILTER

MEASUREMENT TYPE	PARAMETER	VALUE	UNITS	INTERVAL (m)	
Y AXIS CALIPER	FILTER ()	light (2)		TOP	BOTTOM
SPEED	FILTER ()	medium (1)		"	"
TENSION	FILTER ()	medium (1)		"	"
GR	FILTER ()	medium (1)		"	"
ZDL	FILTER ()	medium (1)		"	"

BOREHOLE & CEMENT

MEASUREMENT TYPE	PARAMETER	VALUE	UNITS	INTERVAL (m)	
CASING - BOREHOLE & CEMENT VOLUME	CASING O.D.	114.300	■	TOP	BOTTOM
BIT SIZE	BIT SIZE	158.000	■	"	"

ZDL PROCESSING

MEASUREMENT TYPE	PARAMETER	VALUE	UNITS	INTERVAL (m)	
ZDL CHI-SMOOTH FILTER	DEN CHISM ()	ON		TOP	BOTTOM
	PE CHISM ()	OFF		"	"
ZDL	ZDL TRACKING	ON		"	"

PARAMETER AND FILTER SUMMARY REPORT

FILE: /dat1a/pasa/vul_fit3/1777.bx04.prm
 LOGGING MODE: DEPTH DIRECTION: UP
 TOP DEPTH: 0.000 m BOTTOM DEPTH: 0.000 m

SYMMETRIC FILTER

MEASUREMENT TYPE	PARAMETER	VALUE	UNITS	INTERVAL (m)	
Y AXIS CALIPER	FILTER ()	light (2)		TOP	BOTTOM
SPEED	FILTER ()	medium (1)		"	"
TENSION	FILTER ()	medium (1)		"	"
GR	FILTER ()	medium (1)		"	"
ZDL	FILTER ()	medium (1)		"	"

BOREHOLE & CEMENT

MEASUREMENT TYPE	PARAMETER	VALUE	UNITS	INTERVAL (m)	
CASINO - BOREHOLE & CEMENT VOLUME	CASINO O.D.	114.300	m	TOP	BOTTOM
BIT SIZE	BIT SIZE	159.000	m	"	"

ZDL PROCESSING

MEASUREMENT TYPE	PARAMETER	VALUE	UNITS	INTERVAL (m)	
ZDL CHI-SMOOTH FILTER	DEN CHISM ()	ON		TOP	BOTTOM
	PE CHISM ()	OFF		"	"
ZDL	ZDL TRACKING	ON		"	"

CURVE DESCRIPTION REPORT

CURVE NAME	CURVE ALIAS	CREATION DATE	CURVE DESCRIPTION
F1:BIT	BIT	Oct 14 00:41:09 2005	BIT SIZE
F1:BYOL	BYOL	Oct 14 00:41:09 2005	BOREHOLE VOLUME
F1:CAL	CALX	Oct 14 00:41:09 2005	CALIPER
F1:CYOL	CYOL	Oct 14 00:41:09 2005	CEMENT VOLUME
F1:GR	GR	Oct 14 00:41:09 2005	GAMMA RAY
F1:MMRK	MMRK	Oct 14 00:41:09 2005	MINUTE MARK
F1:PE	PE	Oct 13 23:51:57 2005	PHOTO ELECTRIC CROSS-SECTION
F1:TEN	TEN	Oct 14 00:41:09 2005	DIFFERENTIAL TENSION
F1:ZCOR	ZCOR	Oct 13 23:51:57 2005	DENSITY CORRECTION
F1:ZDEN	ZDEN	Oct 13 23:51:57 2005	FORMATION BULK DENSITY

CURVE MEASURE POINT OFFSET

CURVE	OFFSET (m)	CURVE	OFFSET (m)	CURVE	OFFSET (m)	CURVE	OFFSET (m)
BIT	0.00	GR	17.41	TEN	0.00	ZDEN	9.94
CAL	9.94	PE	9.94	ZCOR	9.94		

Presentation : opul:/dat1a/pasa/vul_fit3/zdl_upper.pdf [1:800 Scale]
 Plot Interval : 8.2484 - 372.161 Meters

Data File 1 : F1 : opul:/dat1a/pasa/vul_fit3/1777.bx.zff
 Created On : Oct 13 23:51:57 2005
 Company : VULCAN MINERALS INC.
 Well : FLAT BAY #3
 Field : FLAT BAY
 File Interval : 8.2484 - 372.161 Meters
 Oct : 1777.bx

GR BACKUP

TOOL STICKING

METERS

XCAL < BIT

GAMMA RAY [gr]

0 150

(gAPI)

Caliper [cal]

125 375

(mm)

BIT SIZE

125 375

(mm)

DIFF. TENSION [ton]

1900 100

(kgf)

MINUTE MARK

1

BVOL

0.1

1

10

Cement

0.1

1

10

BULK DENSITY [zden]

2000

3000

(kg/m3)

P.E. [pe]

0

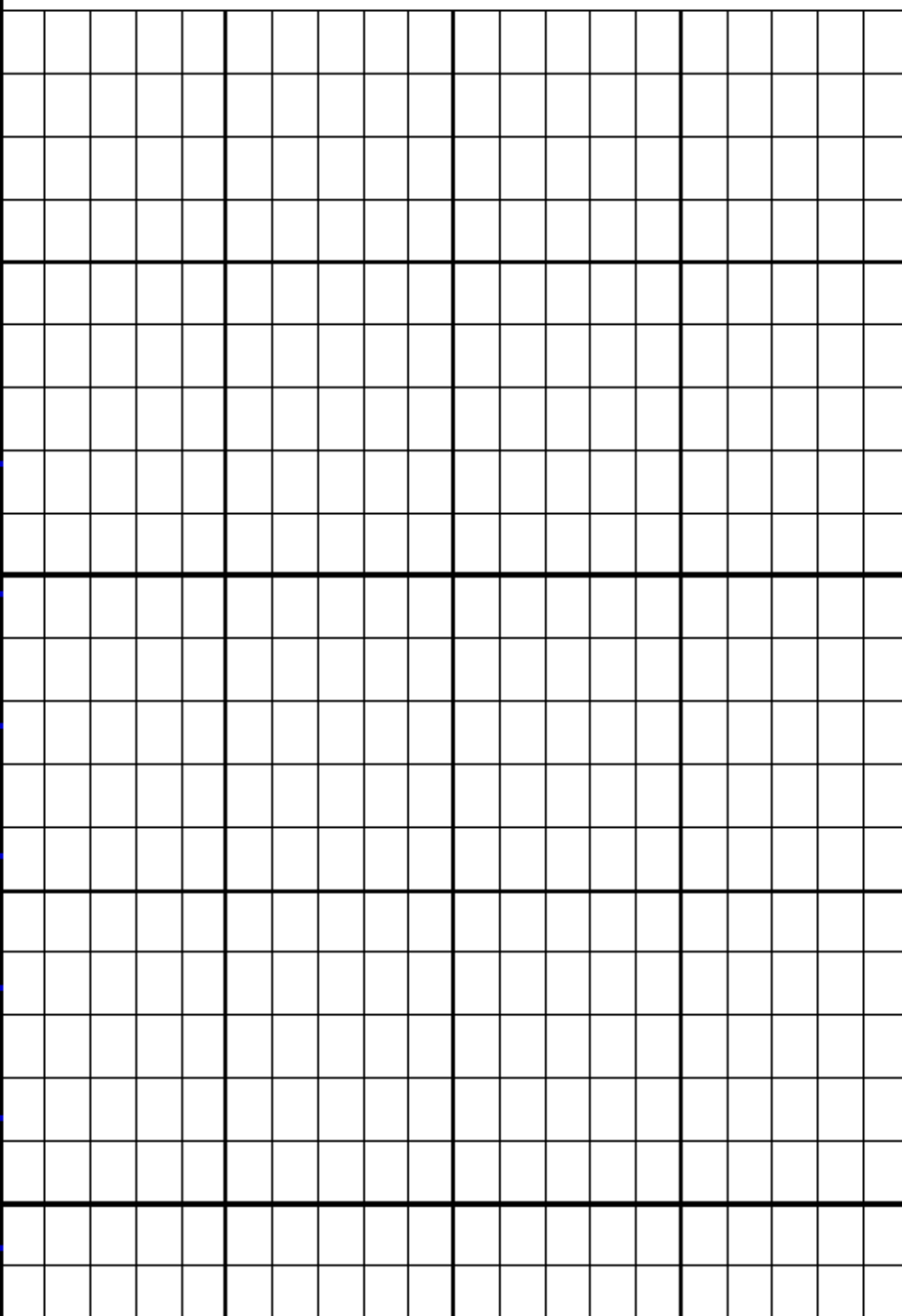
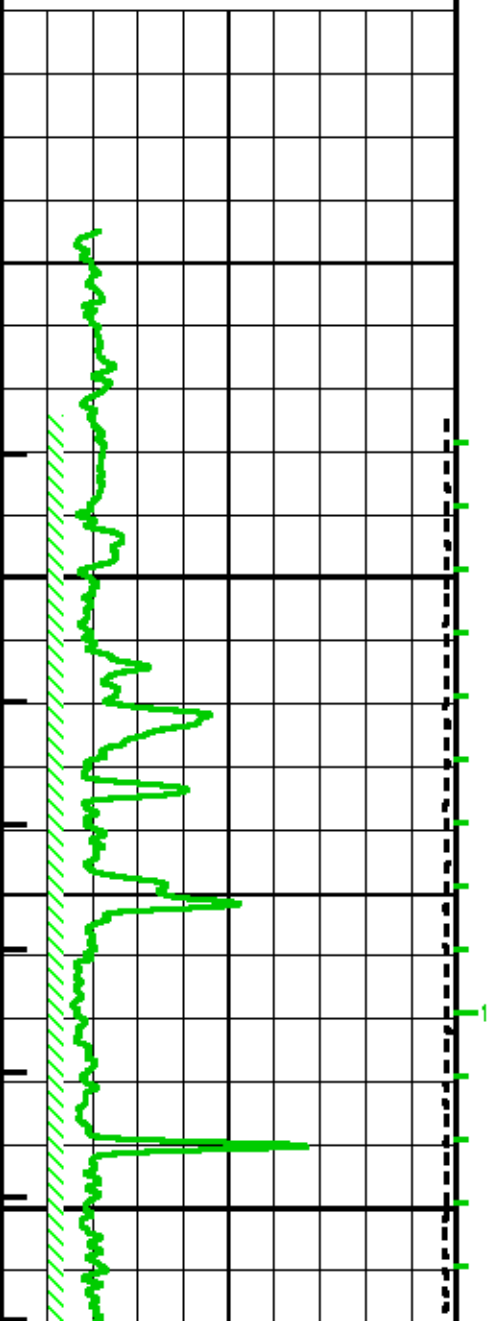
10 450

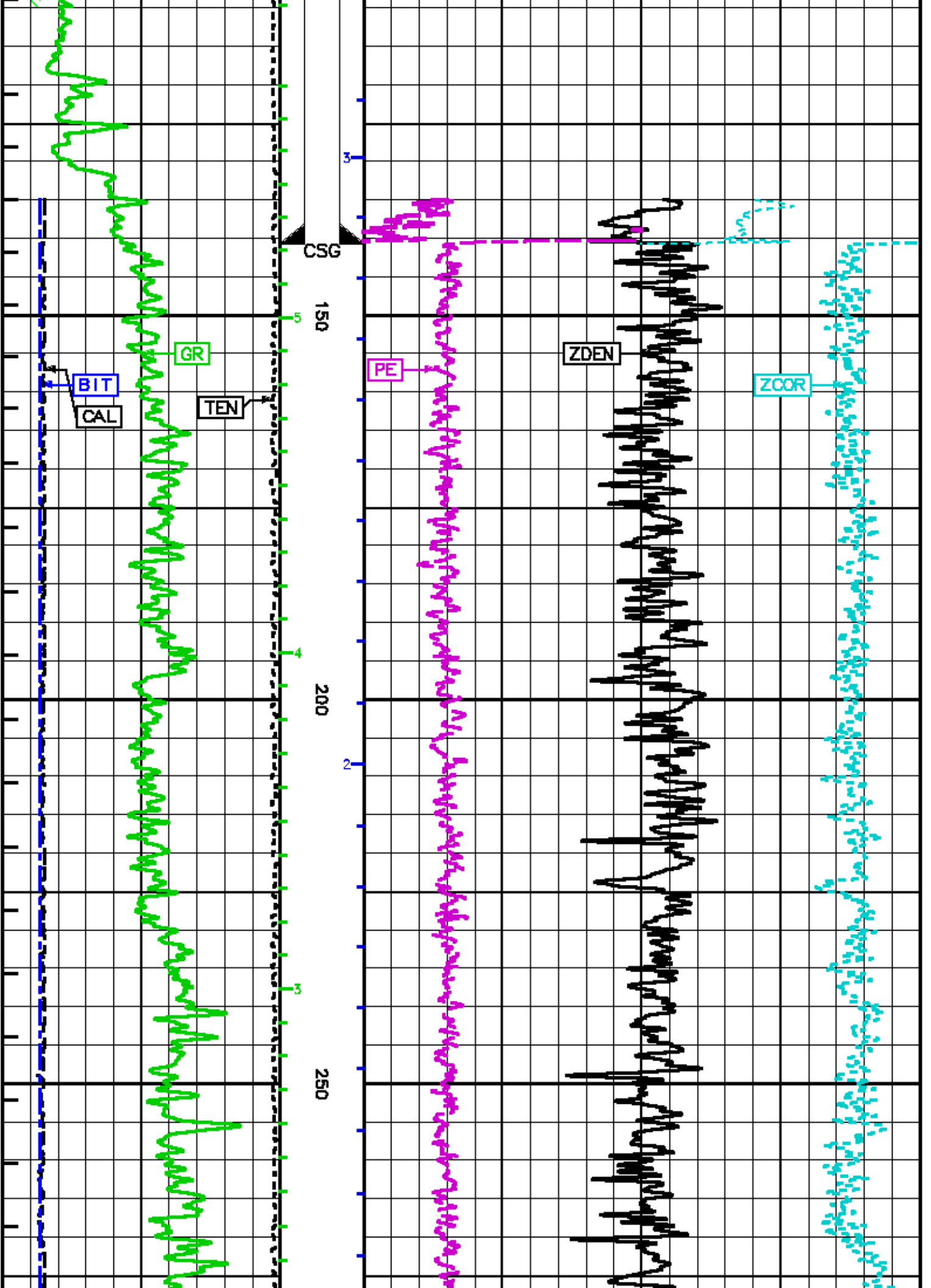
Z-CORR [zcor]

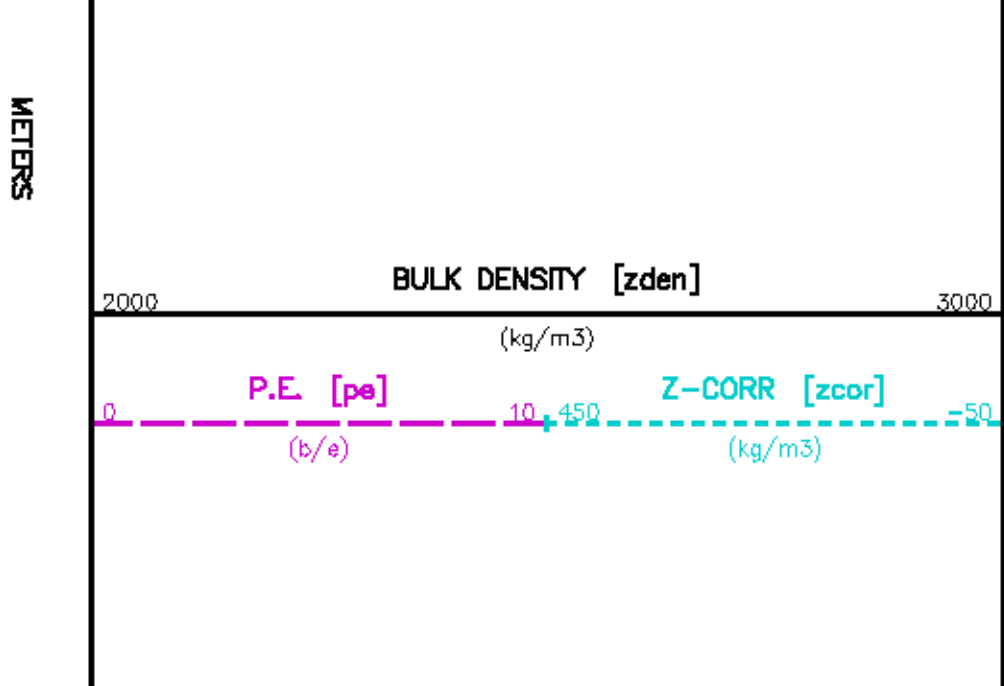
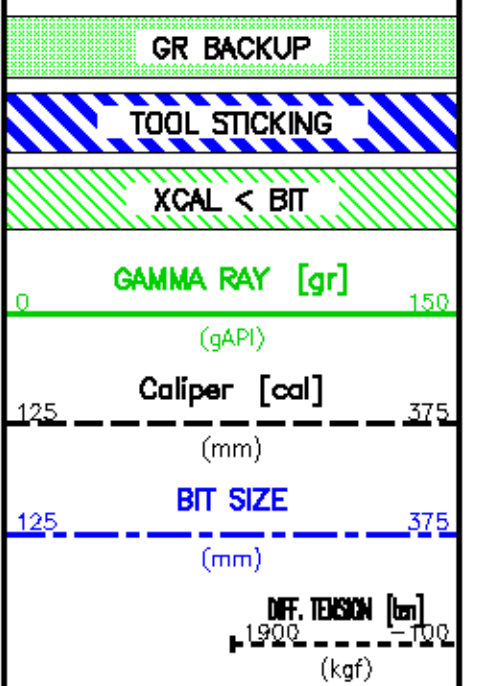
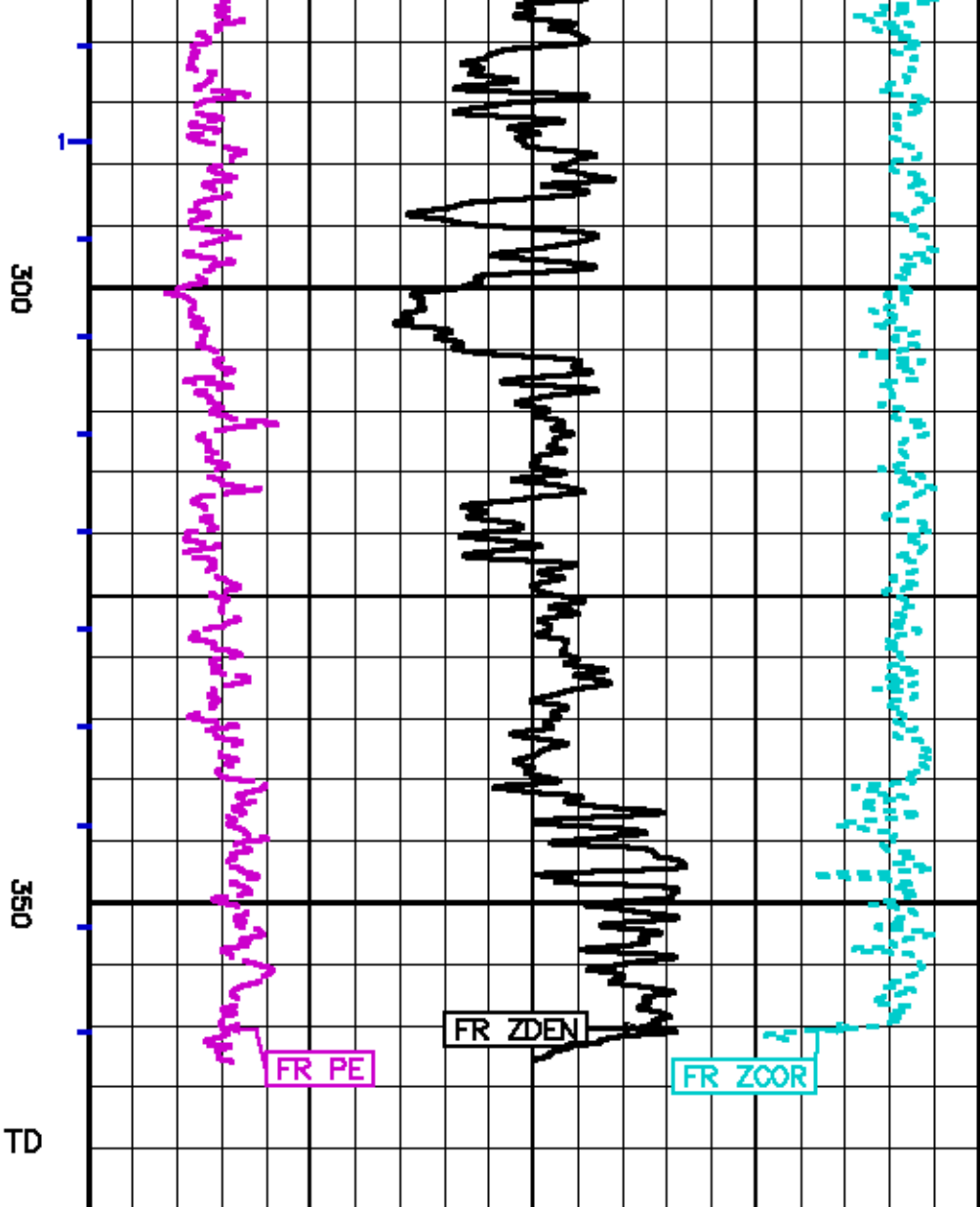
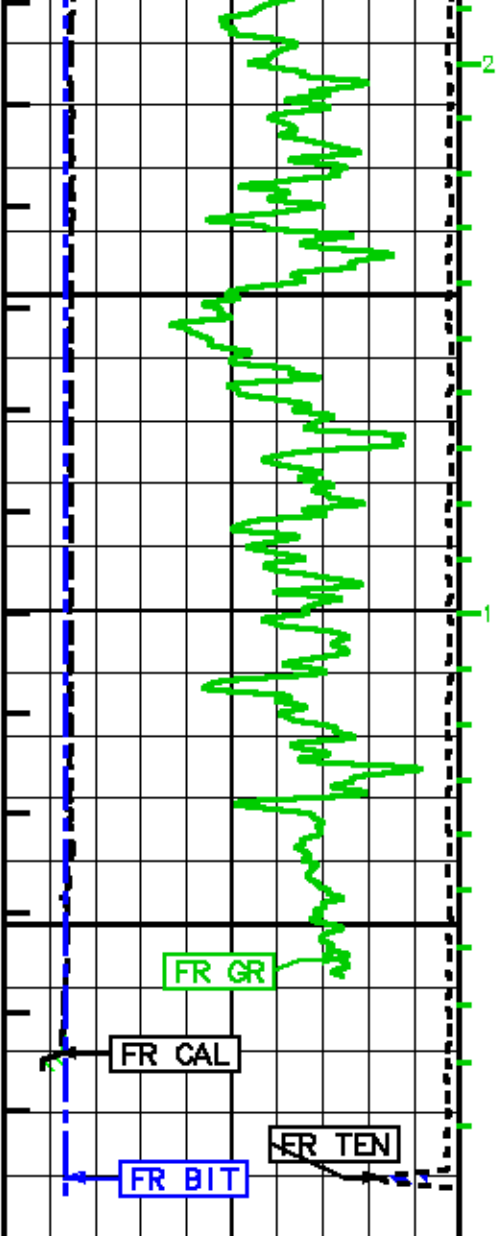
-50

(b/e)

(kg/m3)







0.1
1
10

MAIN LOG - LIMESTONE MATRIX

ECLIPS 5.01 Dec 17, 2003
Updates: 1,2,3,32

Perpht /main/59

Cplot 7.09
Pdf_Cpp /main/16

Fri Oct 14 02:17:02 2005
Fileview 4.67

PARAMETER AND FILTER SUMMARY REPORT

FILE: /data/pasa/vul_filt3/1777Jx03.prm
LOGGING MODE: DEPTH DIRECTION: UP
TOP DEPTH: 0.000 BOTTOM DEPTH: 0.000

SYMMETRIC FILTER

MEASUREMENT TYPE	PARAMETER	VALUE	UNITS	INTERVAL (m)	
Y AXIS CALIPER	FILTER ()	light (2)		TOP	BOTTOM
SPEED	FILTER ()	medium (1)		"	"
TENSION	FILTER ()	medium (1)		"	"
GR	FILTER ()	medium (1)		"	"
CN	FILTER ()	medium (1)		"	"
ZDL	FILTER ()	medium (1)		"	"

BOREHOLE & CEMENT

MEASUREMENT TYPE	PARAMETER	VALUE	UNITS	INTERVAL (m)	
CASING - BOREHOLE & CEMENT VOLUME	CASING O.D.	114.300	■	TOP	BOTTOM
BIT SIZE	BIT SIZE	159.000	■	"	"

ZDL PROCESSING

MEASUREMENT TYPE	PARAMETER	VALUE	UNITS	INTERVAL (m)	
ZDL CHI-SMOOTH FILTER	DEM CHISM ()	ON		TOP	BOTTOM
	PE CHISM ()	OFF		"	"
DENSITY POROSITY	RHOfluid	1.000	g/cm3	"	"
	RHOmatrix (line)	2.710	g/cm3	"	"
ZDL	ZDL TRACKING	ON		"	"

PARAMETER AND FILTER SUMMARY REPORT

FILE: /data/pasa/vul_filt3/1777Jx04.prm
LOGGING MODE: DEPTH DIRECTION: UP
TOP DEPTH: 0.000 BOTTOM DEPTH: 0.000

SYMMETRIC FILTER

MEASUREMENT TYPE	PARAMETER	VALUE	UNITS	INTERVAL (m)	
Y AXIS CALIPER	FILTER ()	light (2)		TOP	BOTTOM
SPEED	FILTER ()	medium (1)		"	"
TENSION	FILTER ()	medium (1)		"	"
GR	FILTER ()	medium (1)		"	"
CN	FILTER ()	medium (1)		"	"
ZDL	FILTER ()	medium (1)		"	"

BOREHOLE & CEMENT

MEASUREMENT TYPE	PARAMETER	VALUE	UNITS	INTERVAL (m)	
CASING - BOREHOLE & CEMENT VOLUME	CASING O.D.	114.300	■	TOP	BOTTOM
BIT SIZE	BIT SIZE	159.000	■	"	"

ZDL PROCESSING

MEASUREMENT TYPE	PARAMETER	VALUE	UNITS	INTERVAL (m)	
ZDL CHI-SMOOTH FILTER	DEH CHISM ()	ON		TOP	BOTTOM
	PE CHISM ()	OFF		''	''
DENSITY POROSITY	RHOfluid	1.000	g/cm3	''	''
	RHOmatrix (lime)	2.710	g/cm3	''	''
ZDL	ZDL TRACKING	ON		''	''

CURVE DESCRIPTION REPORT

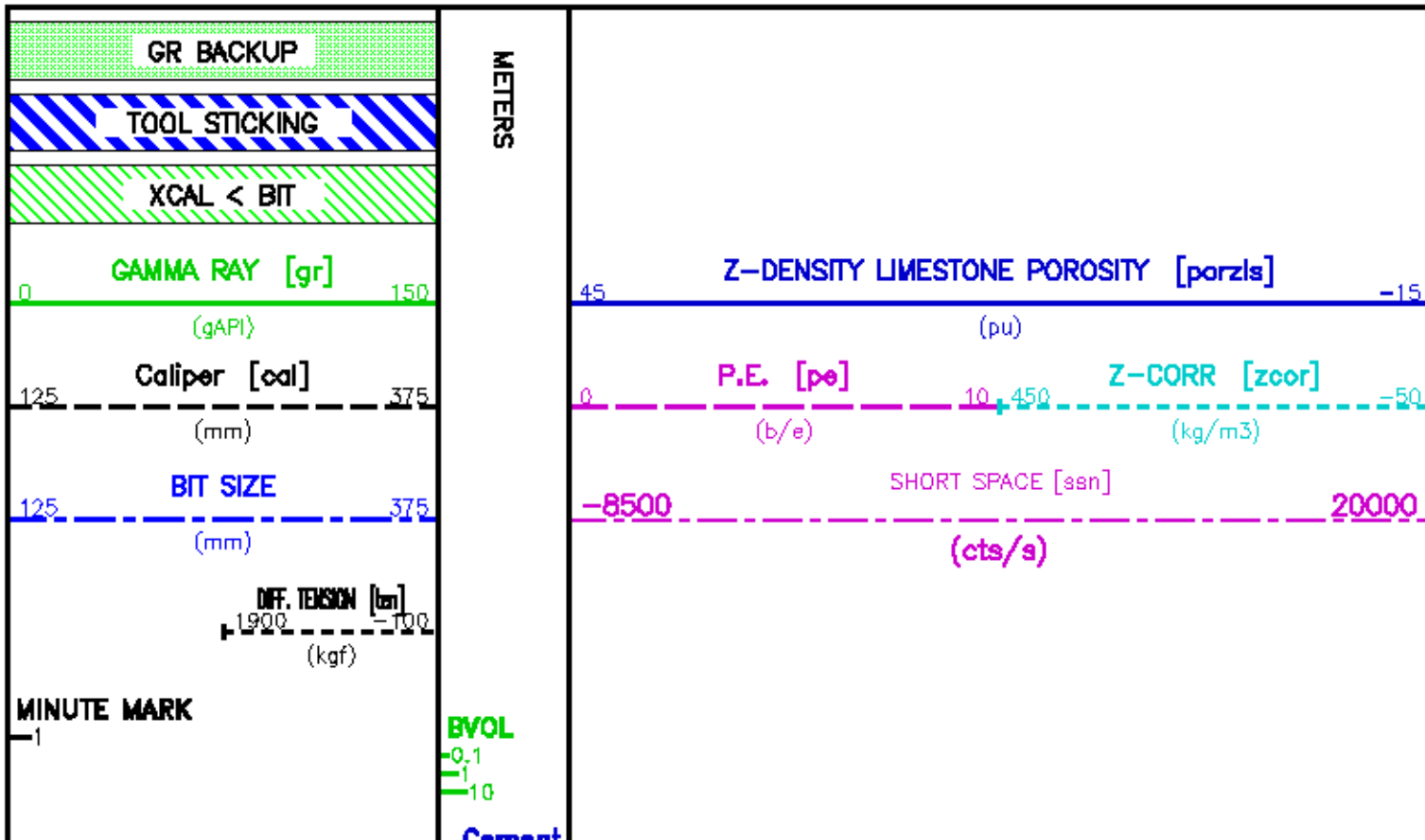
CURVE NAME	CURVE ALIAS	CREATION DATE	CURVE DESCRIPTION
F1:BIT	BIT	Oct 14 00:41:09 2005	BIT SIZE
F1:BYOL	BYOL	Oct 14 00:41:09 2005	BOREHOLE VOLUME
F1:CAL	CALX	Oct 14 00:41:09 2005	CALIPER
F1:CYOL	CVOL	Oct 14 00:41:09 2005	CEMENT VOLUME
F1:GR	GR	Oct 14 00:41:09 2005	GAMMA RAY
F1:MMRK	MMRK	Oct 14 00:41:09 2005	MINUTE MARK
F1:PE	PE	Oct 13 23:51:57 2005	PHOTO ELECTRIC CROSS-SECTION
F1:PORZLS	PORZLS	Oct 13 23:51:57 2005	POROSITY FOR LIMESTONE MATRIX
F1:SSN	SSN	Oct 14 00:41:09 2005	SHORT SPACED COUNT RATE
F1:TEN	TEN	Oct 14 00:41:09 2005	DIFFERENTIAL TENSION
F1:ZCOR	ZCOR	Oct 13 23:51:57 2005	DENSITY CORRECTION

CURVE MEASURE POINT OFFSET

CURVE	OFFSET (m)	CURVE	OFFSET (m)	CURVE	OFFSET (m)	CURVE	OFFSET (m)
BIT	0.00	GR	17.41	PORZLS	9.94	TEN	0.00
CAL	9.94	PE	9.94	SSN	15.32	ZCOR	9.94

Presentation : opul:/data/pass/vul_fms/zdl_main_la.pdf [1:240 Scale]
Plot Interval : 8.2484 - 372.161 Meters

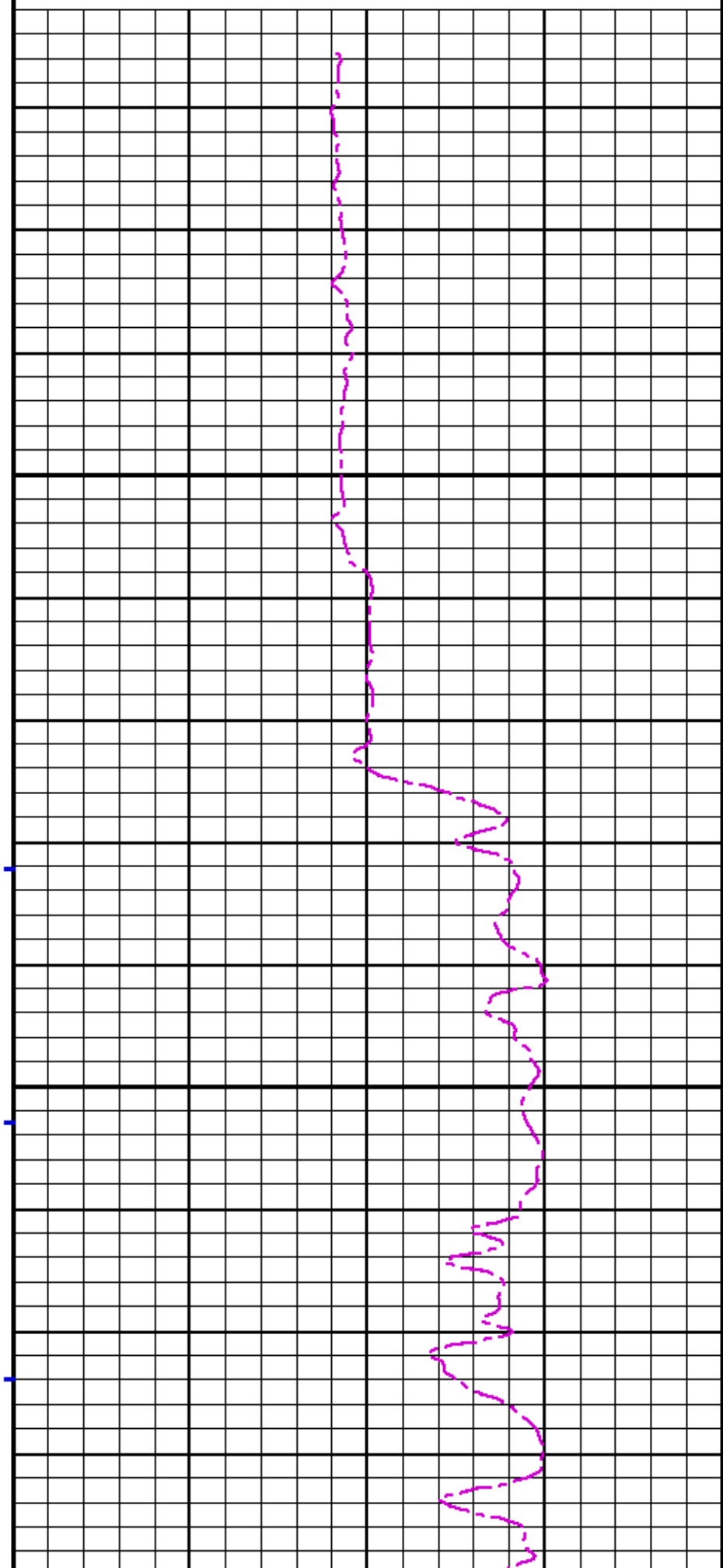
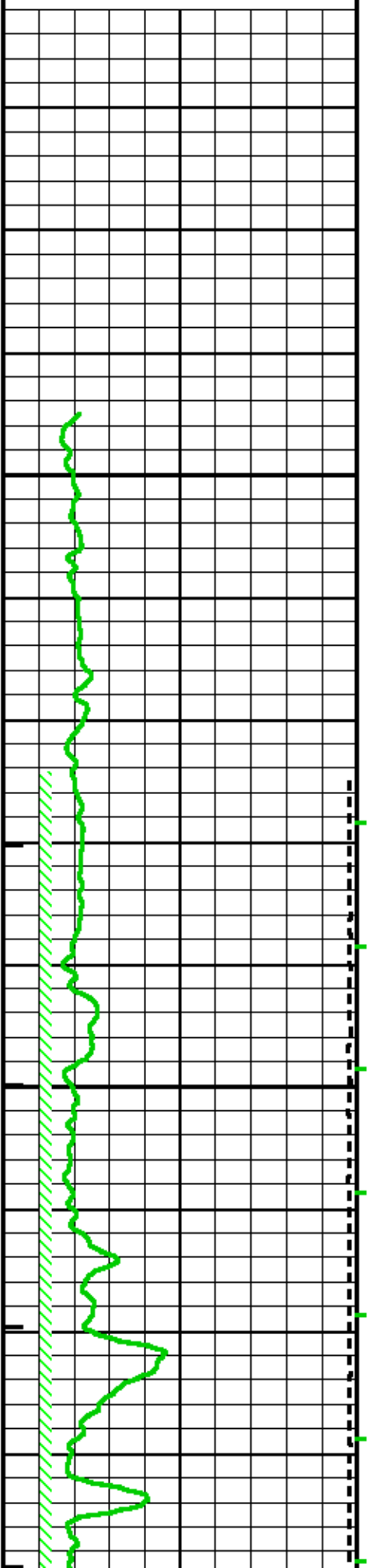
Data File 1 : F1 : opul:/data/pass/vul_fms/1777.las.tif
Created On : Oct 13 23:51:57 2005
Company : VULCAN MINERALS INC.
Well : FLAT BAY #3
Field : FLAT BAY
File Interval : 8.2484 - 372.161 Meters
Oct : 1777.la



0.1
1

25

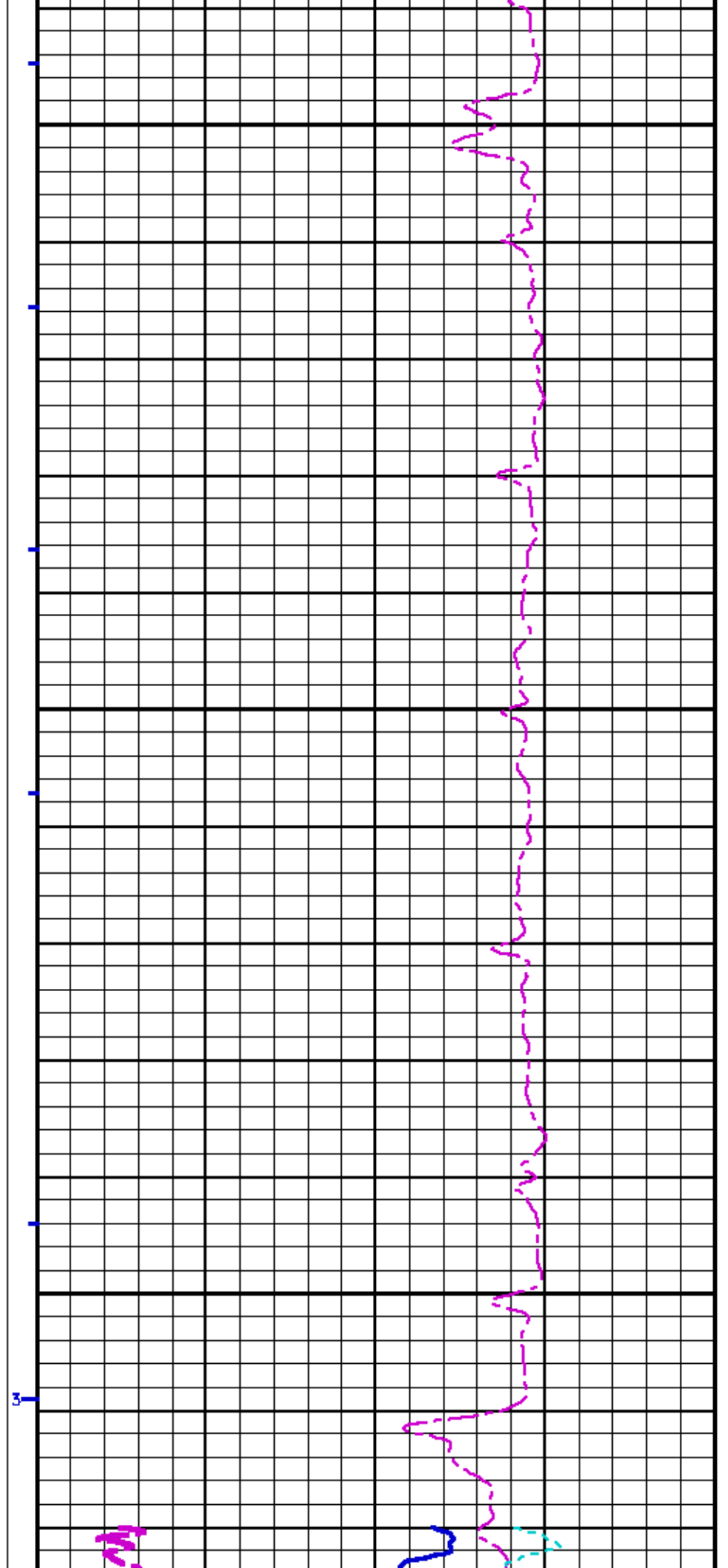
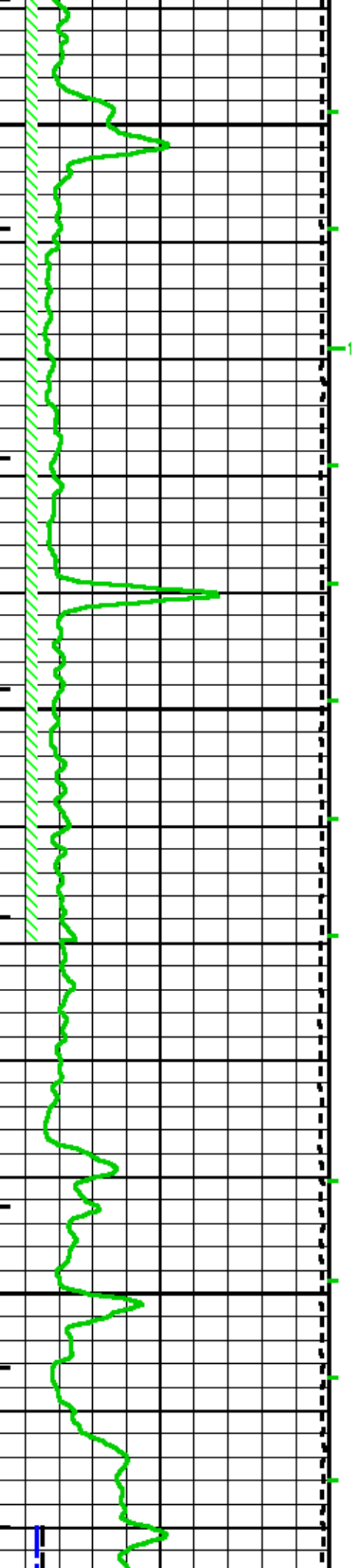
50

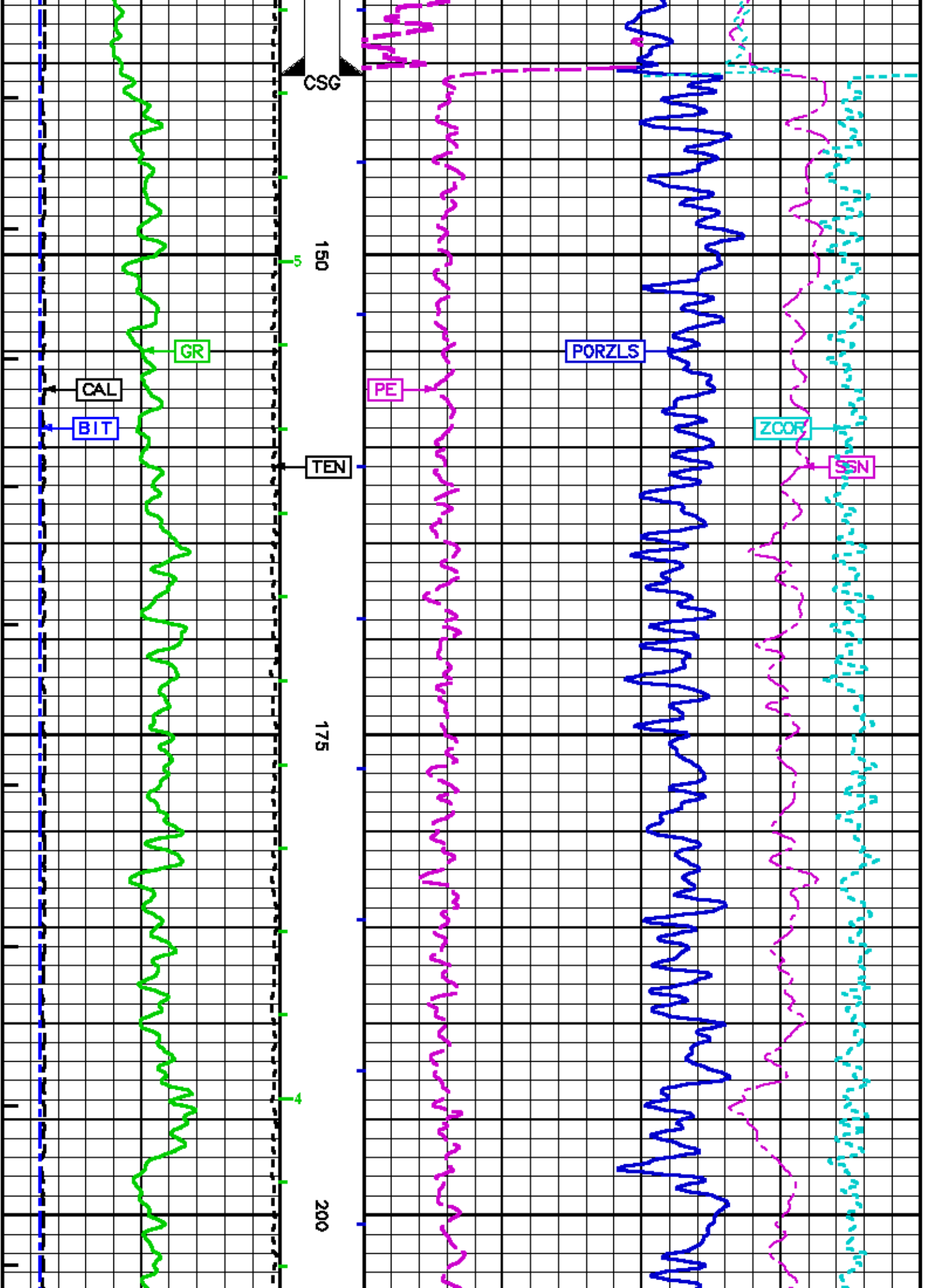


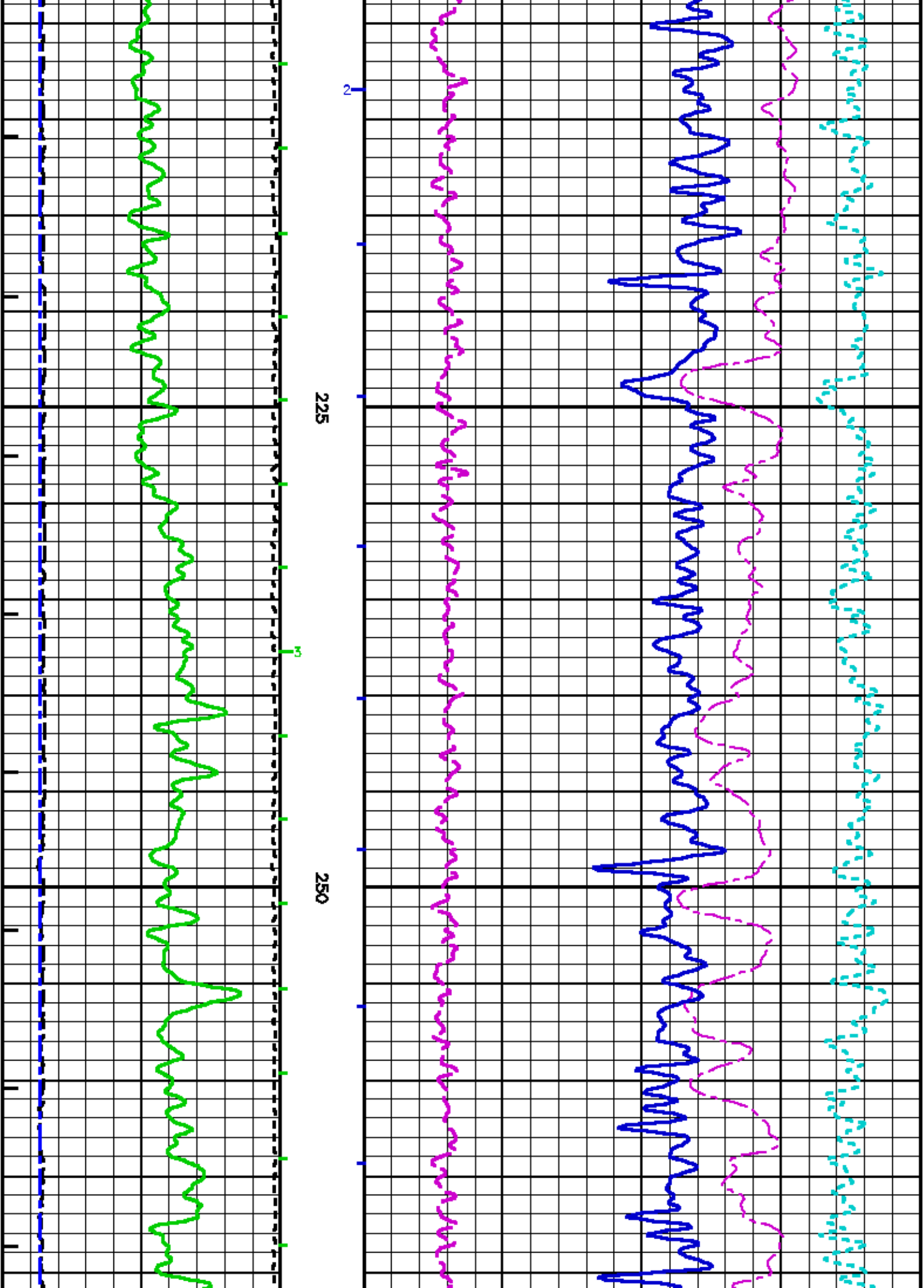
75

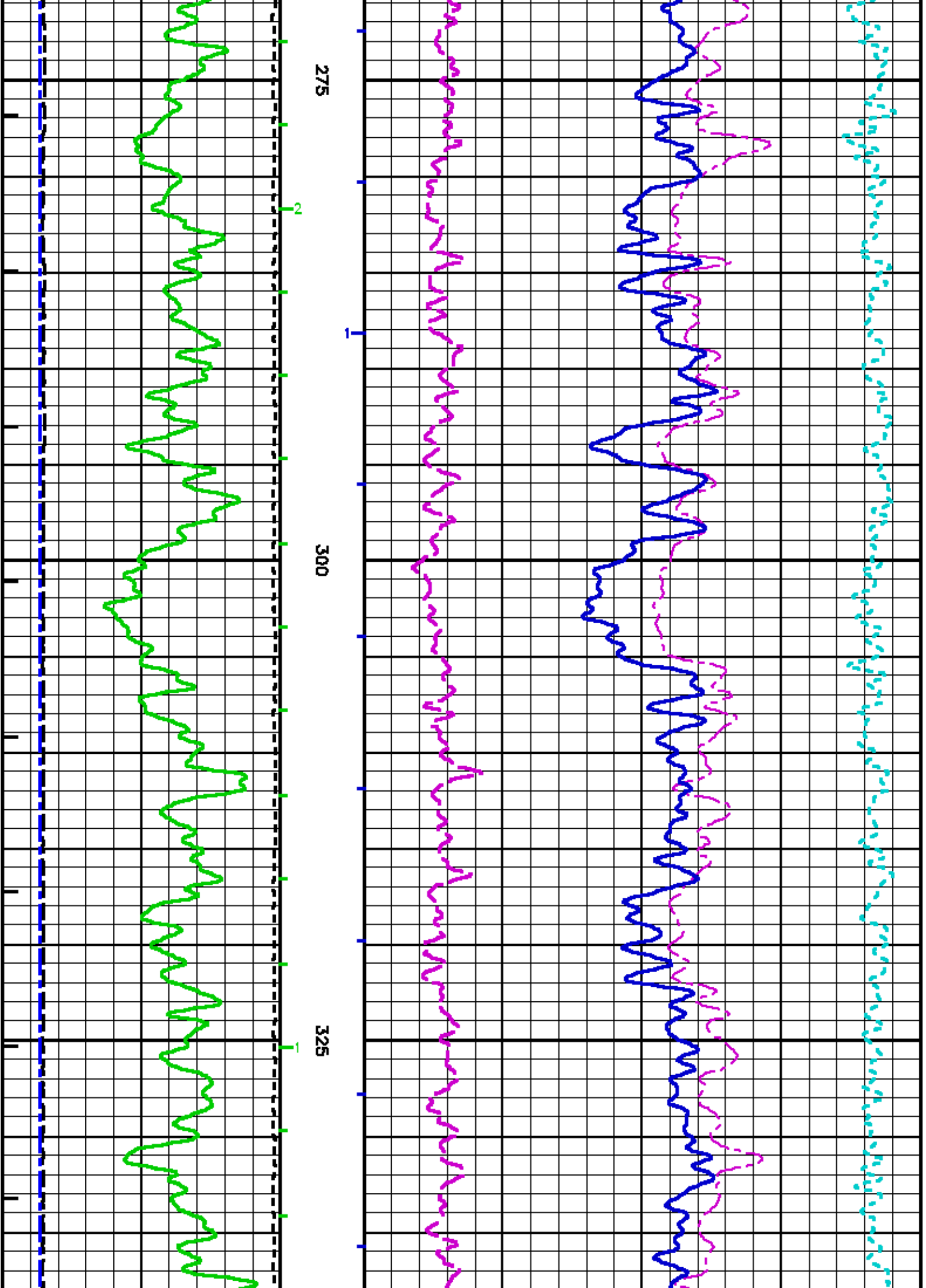
100

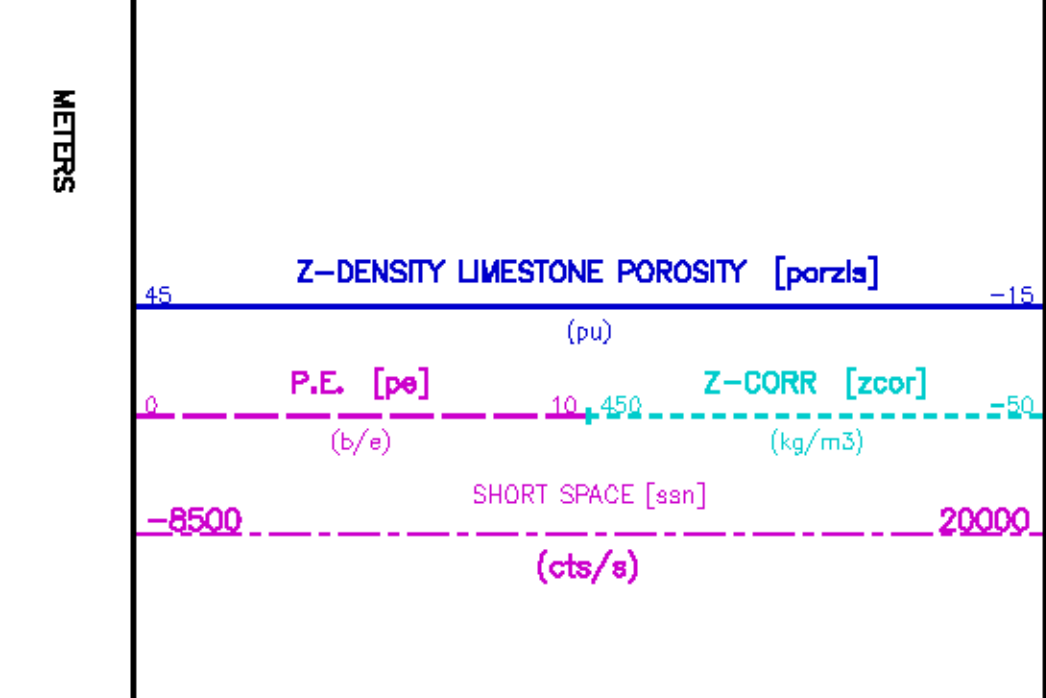
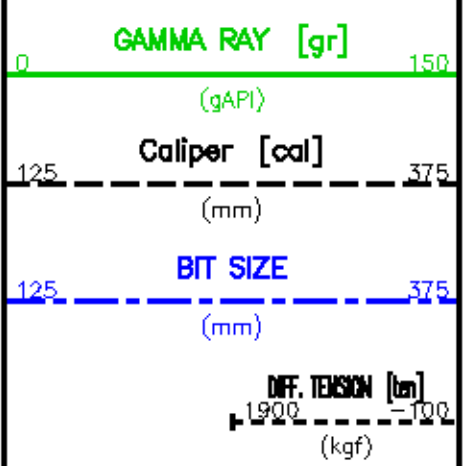
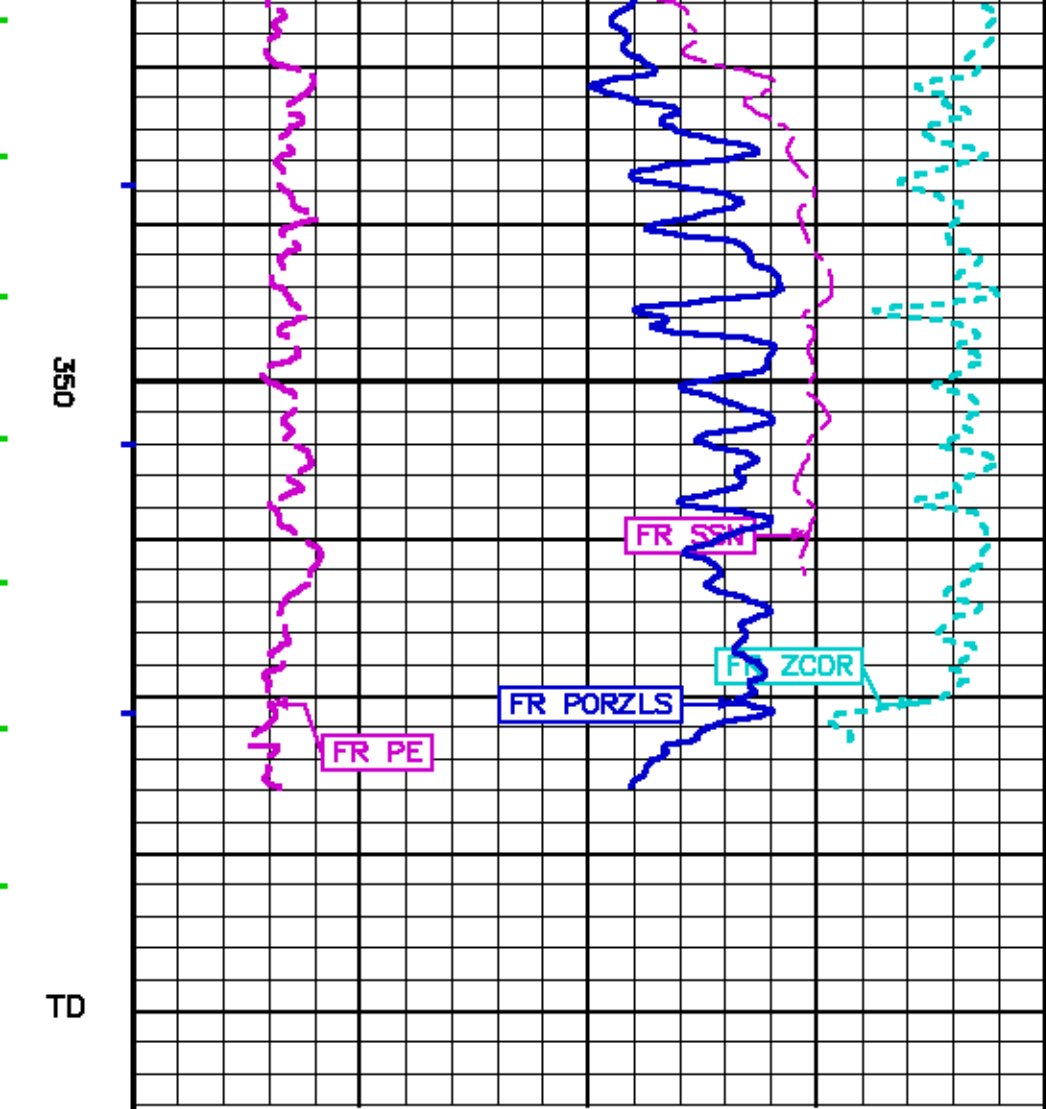
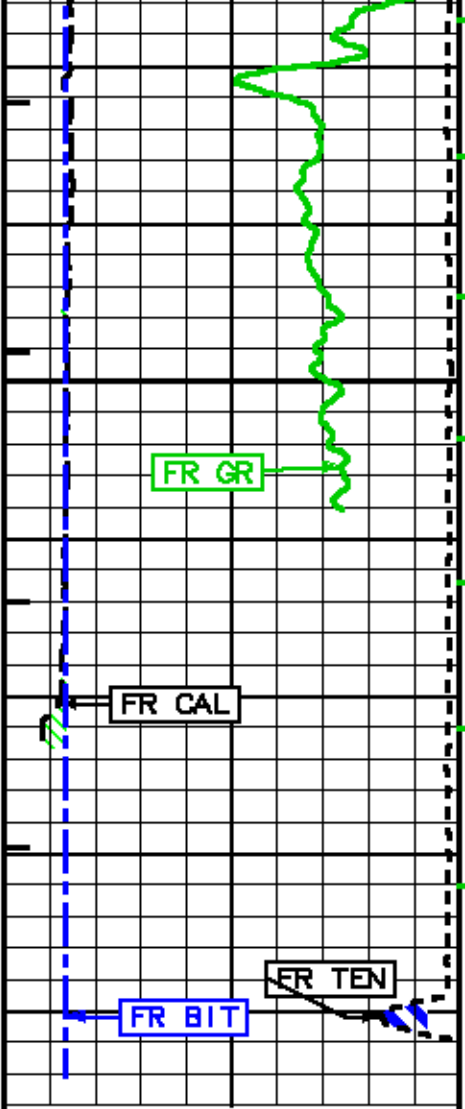
125











REPEAT LOG - LIMESTONE MATRIX

ECLIPS 5.01 Dec 17, 2003
Updates: 1,2,3,32

Perpht /maln/59

Cplot 7.09
Pdf_Cpp /maln/16

Fri Oct 14 02:27:02 2005
Fileview 4.67

PARAMETER AND FILTER SUMMARY REPORT

FILE: /dat1a/pasa/vul_fit3/1777.JdR01.prm
LOGGING MODE: DEPTH DIRECTION: UP
TOP DEPTH: 278.818 m BOTTOM DEPTH: 388.427 m

SYMMETRIC FILTER

MEASUREMENT TYPE	PARAMETER	VALUE	UNITS	INTERVAL (m)	
Y AXIS CALIPER	FILTER ()	light (2)		TOP	BOTTOM
SPEED	FILTER ()	medium (1)		"	"
TENSION	FILTER ()	medium (1)		"	"
GR	FILTER ()	medium (1)		"	"
CN	FILTER ()	medium (1)		"	"
ZDL	FILTER ()	medium (1)		"	"

BOREHOLE & CEMENT

MEASUREMENT TYPE	PARAMETER	VALUE	UNITS	INTERVAL (m)	
CASING - BOREHOLE & CEMENT VOLUME	CASING O.D.	114.300	mm	TOP	BOTTOM
BIT SIZE	BIT SIZE	159.000	mm	"	"

ZDL PROCESSING

MEASUREMENT TYPE	PARAMETER	VALUE	UNITS	INTERVAL (m)	
ZDL CHI-SMOOTH FILTER	DEN CHISM ()	ON		TOP	BOTTOM
	PE CHISM ()	OFF		"	"
DENSITY POROSITY	RHOfluid	1.000	g/cm3	"	"
	RHOmatrix (line)	2.710	g/cm3	"	"
ZDL	ZDL TRACKING	ON		"	"

CURVE DESCRIPTION REPORT

CURVE NAME	CURVE ALIAS	CREATION DATE	CURVE DESCRIPTION
F1:BIT	BIT	Oct 13 23:48:42 2005	BIT SIZE
F1:BYOL	BYOL	Oct 13 23:48:42 2005	BOREHOLE VOLUME
F1:CAL	CALX	Oct 13 23:48:42 2005	CALIPER
F1:CYOL	CYOL	Oct 13 23:48:42 2005	CEMENT VOLUME
F1:GR	GR	Oct 13 23:48:42 2005	GAMMA RAY
F1:MMRK	MMRK	Oct 13 23:48:42 2005	MINUTE MARK
F1:PE	PE	Oct 13 23:48:42 2005	PHOTO ELECTRIC CROSS-SECTION
F1:PORZLS	PORZLS	Oct 13 23:48:42 2005	POROSITY FOR LIMESTONE MATRIX
F1:SSN	SSN	Oct 13 23:48:42 2005	SHORT SPACED COUNT RATE
F1:TEN	TEN	Oct 13 23:48:42 2005	DIFFERENTIAL TENSION
F1:ZCOR	ZCOR	Oct 13 23:48:42 2005	DENSITY CORRECTION

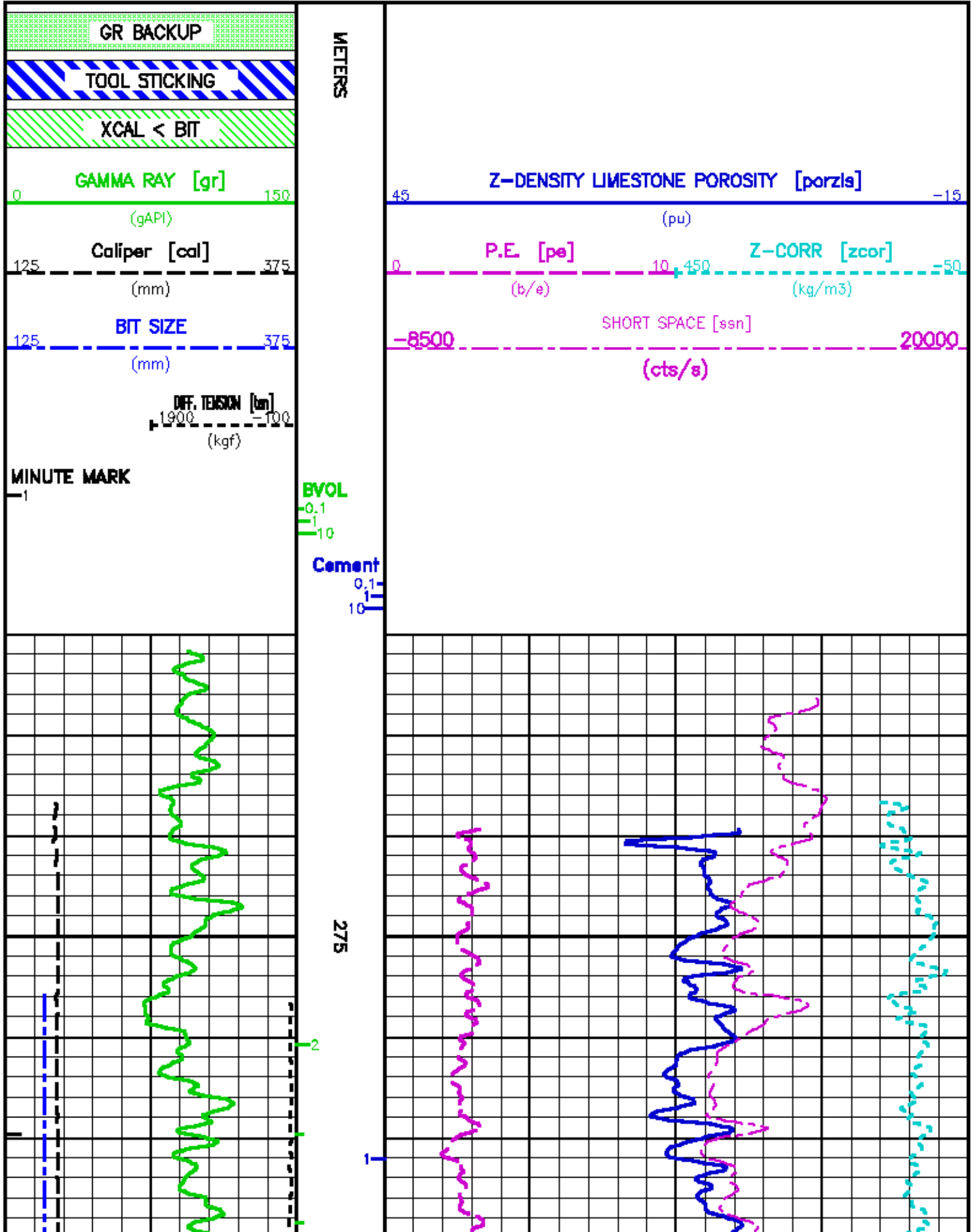
CURVE MEASURE POINT OFFSET

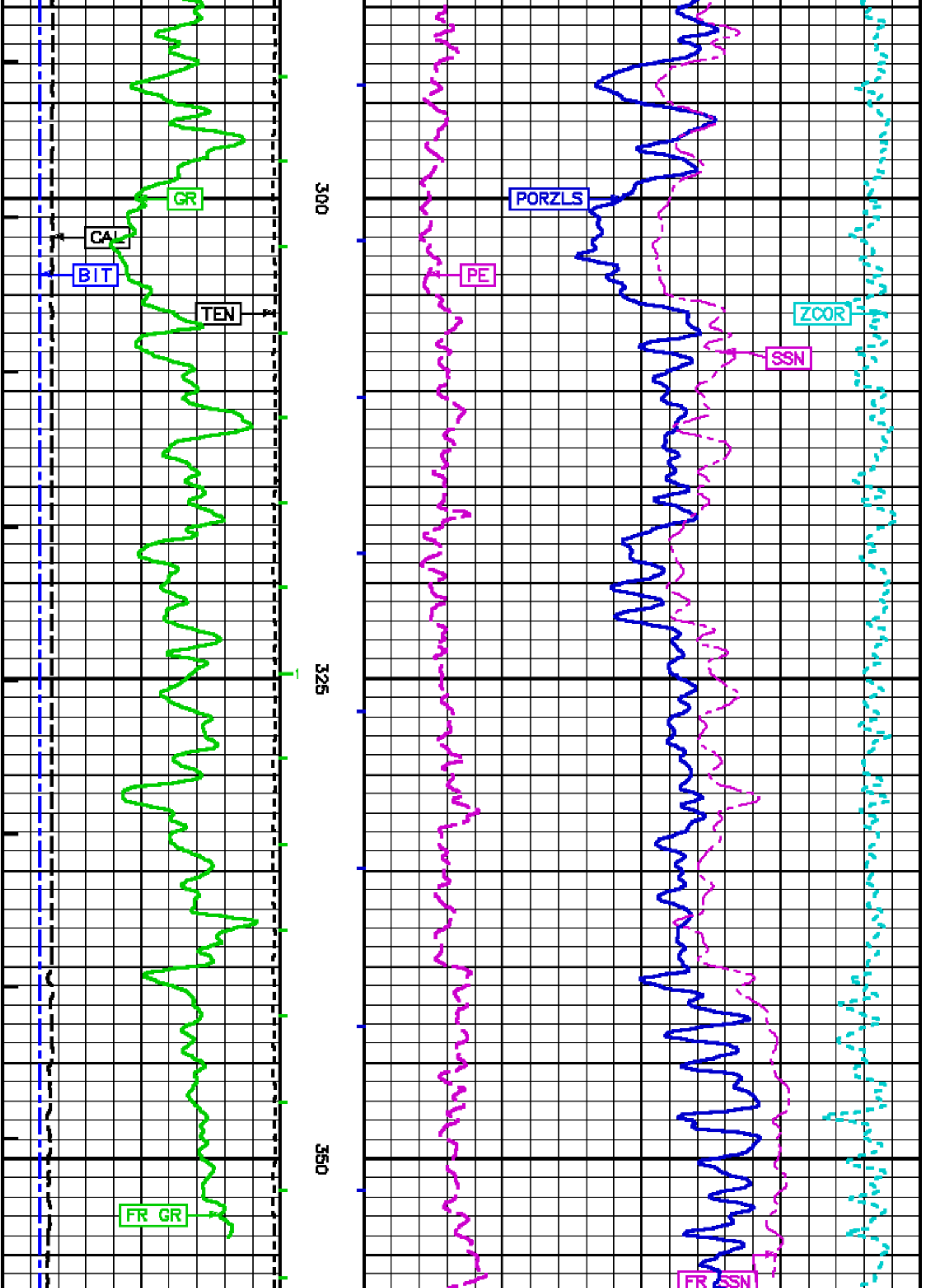
CURVE	OFFSET (m)	CURVE	OFFSET (m)	CURVE	OFFSET (m)	CURVE	OFFSET (m)
BIT	0.00	GR	17.41	PORZLS	9.94	TEN	0.00
CAL	9.94	PE	9.94	SSN	15.32	ZCOR	9.94

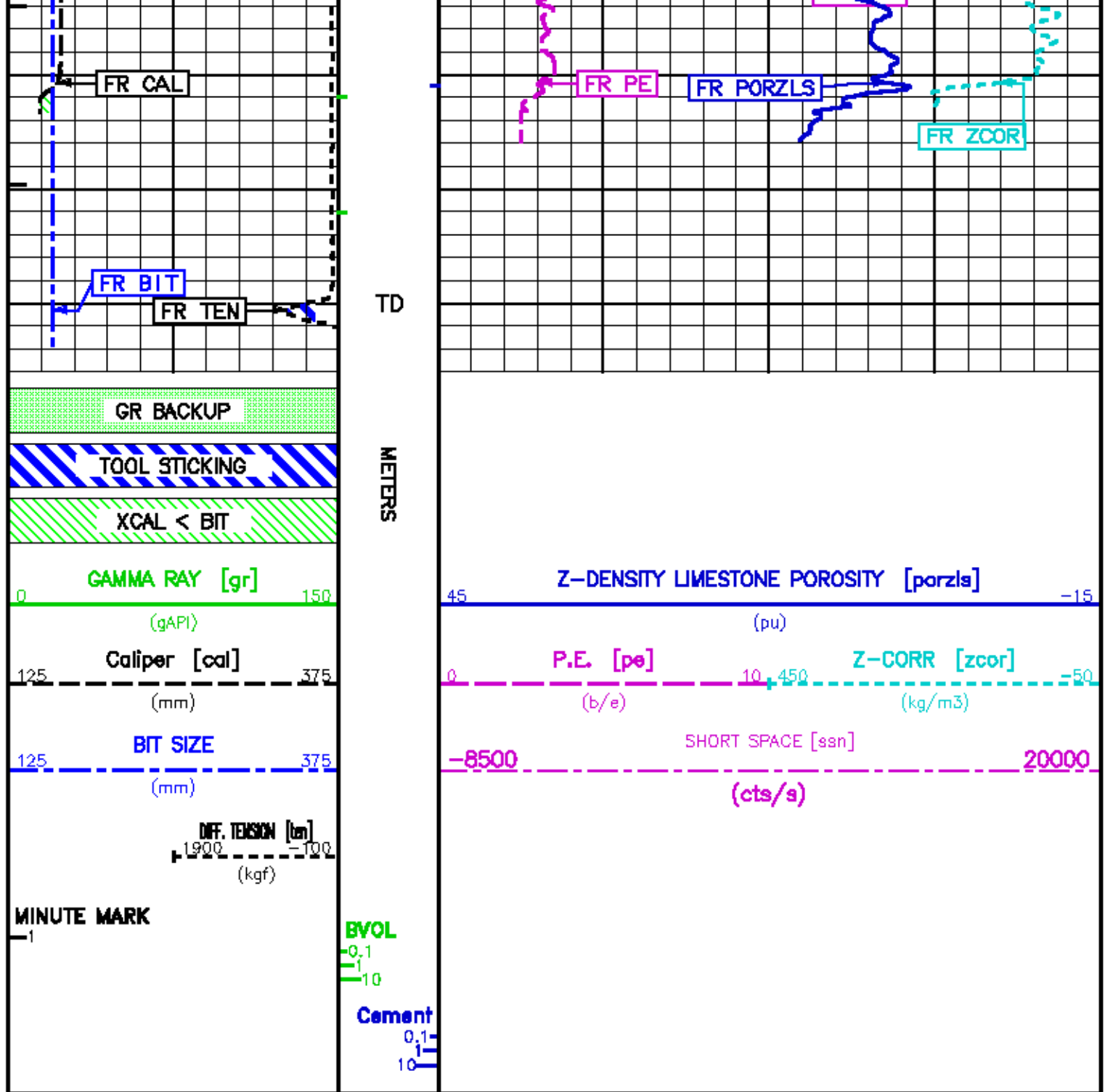
Presentation : cput1/dat1a/pasa/vul_fit3/zdl_rpt.lu.pdf [1:240 Scale]
Plot Interval : 280.909 - 372.161 Meters

Data File 1 : F1 : cput1/dat1a/pasa/vul_fit3/1777.JdR01.off

Created On : Oct 13 2:48:42 2005
 Company : VULCAN MINERALS INC.
 Well : FLAT BAY #3
 Field : FLAT BAY
 File Interval : 256.87 - 372.161 Meters
 Oct : 1777Jx







MAIN LOG - SANDSTONE MATRIX

ECLIPS 5.01 Dec 17, 2003
Updates: 1,2,3,32

Perpht /main/59

Cplot 7.09
Pdf_Cpp /main/16

Fri Oct 14 02:19:15 2005
Fileview 4.67

PARAMETER AND FILTER SUMMARY REPORT

FILE: /data/pasa/vul_fit3/1777.k03.prm
LOGGING MODE: DEPTH DIRECTION: UP
TOP DEPTH: 0.000 BOTTOM DEPTH: 0.000

SYMMETRIC FILTER

MEASUREMENT TYPE	PARAMETER	VALUE	UNITS	INTERVAL (m)	
Y AXIS CALIPER	FILTER ()	light (2)		TOP	BOTTOM
SPEED	FILTER ()	medium (1)		"	"
TENSION	FILTER ()	medium (1)		"	"
GR	FILTER ()	medium (1)		"	"
CN	FILTER ()	medium (1)		"	"
ZDL	FILTER ()	medium (1)		"	"

BOREHOLE & CEMENT

MEASUREMENT TYPE	PARAMETER	VALUE	UNITS	INTERVAL (m)	
CASING - BOREHOLE & CEMENT VOLUME	CASING O.D.	114.300	■	TOP	BOTTOM
BIT SIZE	BIT SIZE	159.000	■	"	"

ZDL PROCESSING

MEASUREMENT TYPE	PARAMETER	VALUE	UNITS	INTERVAL (m)	
ZDL CHI-SMOOTH FILTER	DEN CHISM ()	ON		TOP	BOTTOM
	PE CHISM ()	OFF		"	"
DENSITY POROSITY	RHOfluid	1.000	g/cm3	"	"
	RHOmatrix (sand)	2.650	g/cm3	"	"
ZDL	ZDL TRACKING	ON		"	"

CURVE DESCRIPTION REPORT

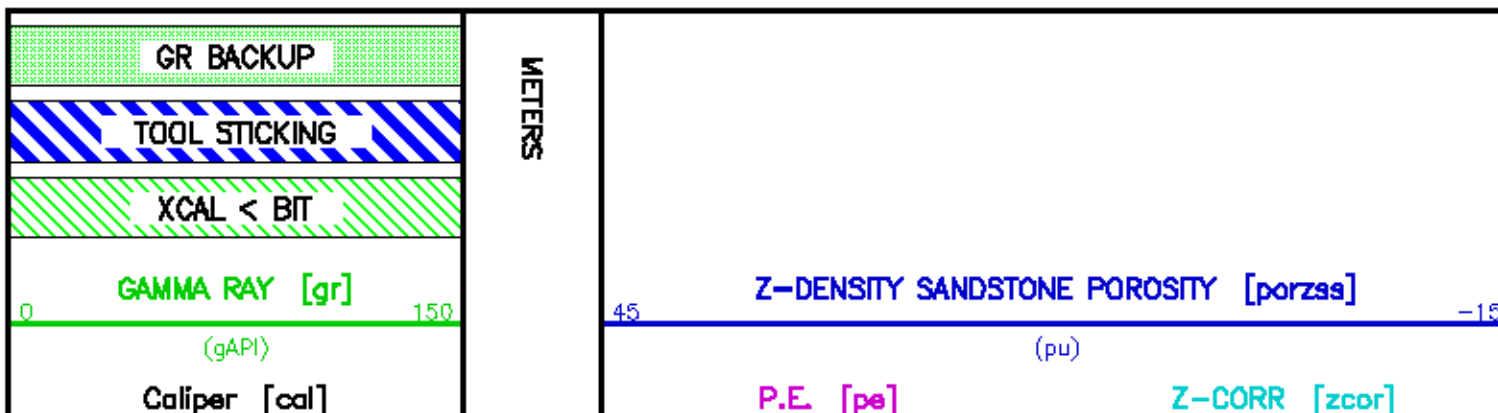
CURVE NAME	CURVE ALIAS	CREATION DATE	CURVE DESCRIPTION
F1:BIT	BIT	Oct 13 23:51:57 2005	BIT SIZE
F1:BYOL	BYOL	Oct 13 23:51:57 2005	BOREHOLE VOLUME
F1:CAL	CALX	Oct 13 23:51:57 2005	CALIPER
F1:CYOL	CYOL	Oct 13 23:51:57 2005	CEMENT VOLUME
F1:GR	GR	Oct 13 23:51:57 2005	GAMMA RAY
F1:MMRK	MMRK	Oct 13 23:51:57 2005	MINUTE MARK
F1:PE	PE	Oct 13 23:51:57 2005	PHOTO ELECTRIC CROSS-SECTION
F1:PORZSS	PORZSS	Oct 13 23:51:57 2005	POROSITY FOR SANDSTONE MATRIX
F1:SSN	SSN	Oct 13 23:51:57 2005	SHORT SPACED COUNT RATE
F1:TEN	TEN	Oct 13 23:51:57 2005	DIFFERENTIAL TENSION
F1:ZCOR	ZCOR	Oct 13 23:51:57 2005	DENSITY CORRECTION

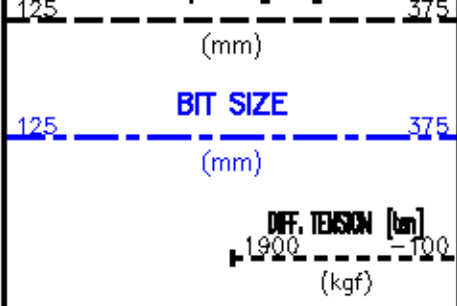
CURVE MEASURE POINT OFFSET

CURVE	OFFSET (m)	CURVE	OFFSET (m)	CURVE	OFFSET (m)	CURVE	OFFSET (m)
BIT	0.00	GR	17.41	PORZSS	9.94	TEN	0.00
CAL	9.94	PE	9.94	SSN	15.32	ZCOR	9.94

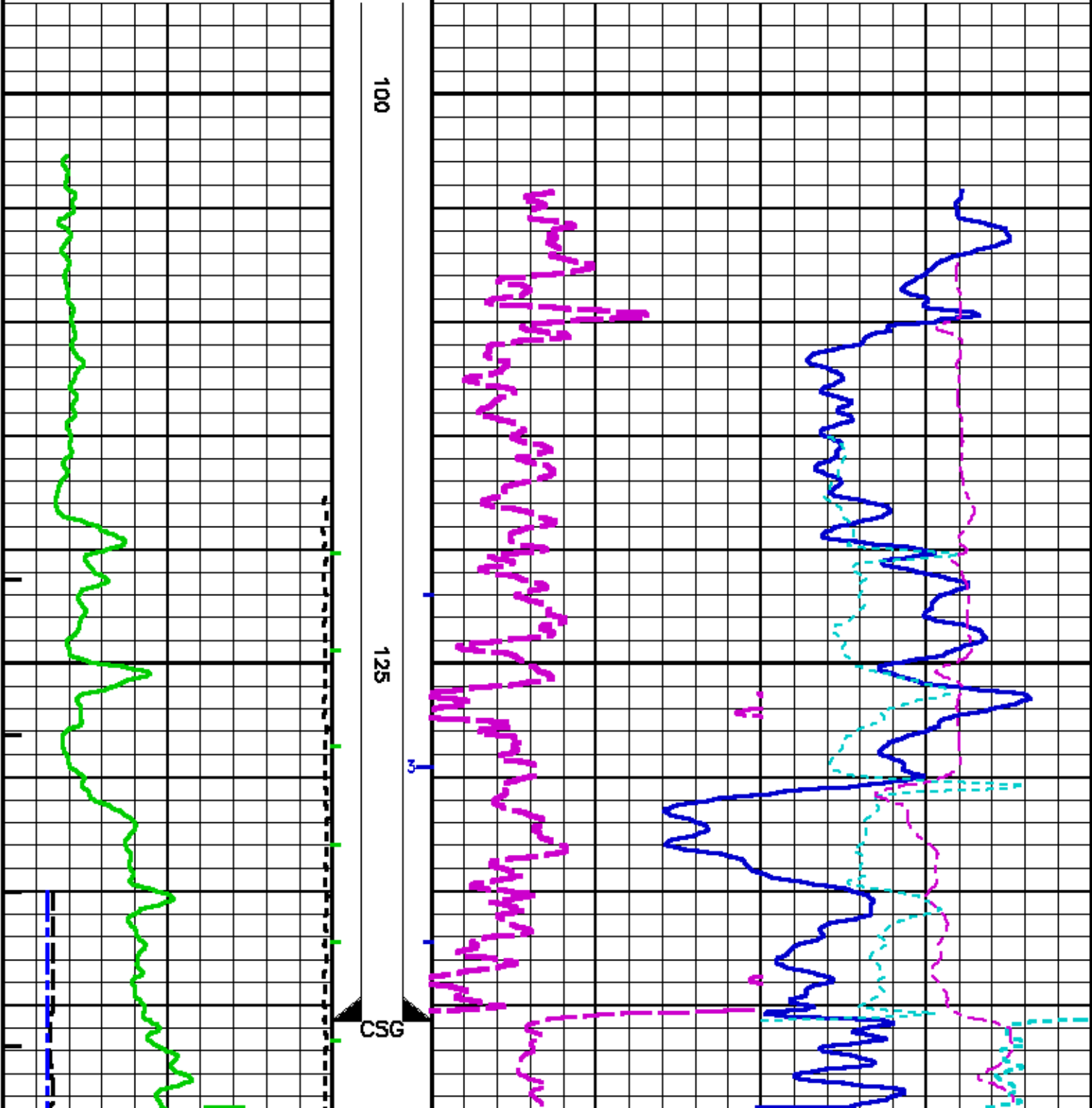
Presentation : cput:/data/pam/vul_fm3/zdl_main.as.pdf [1:240 Scale]
 Plot Interval : 98.1644 - 372.161 Meters

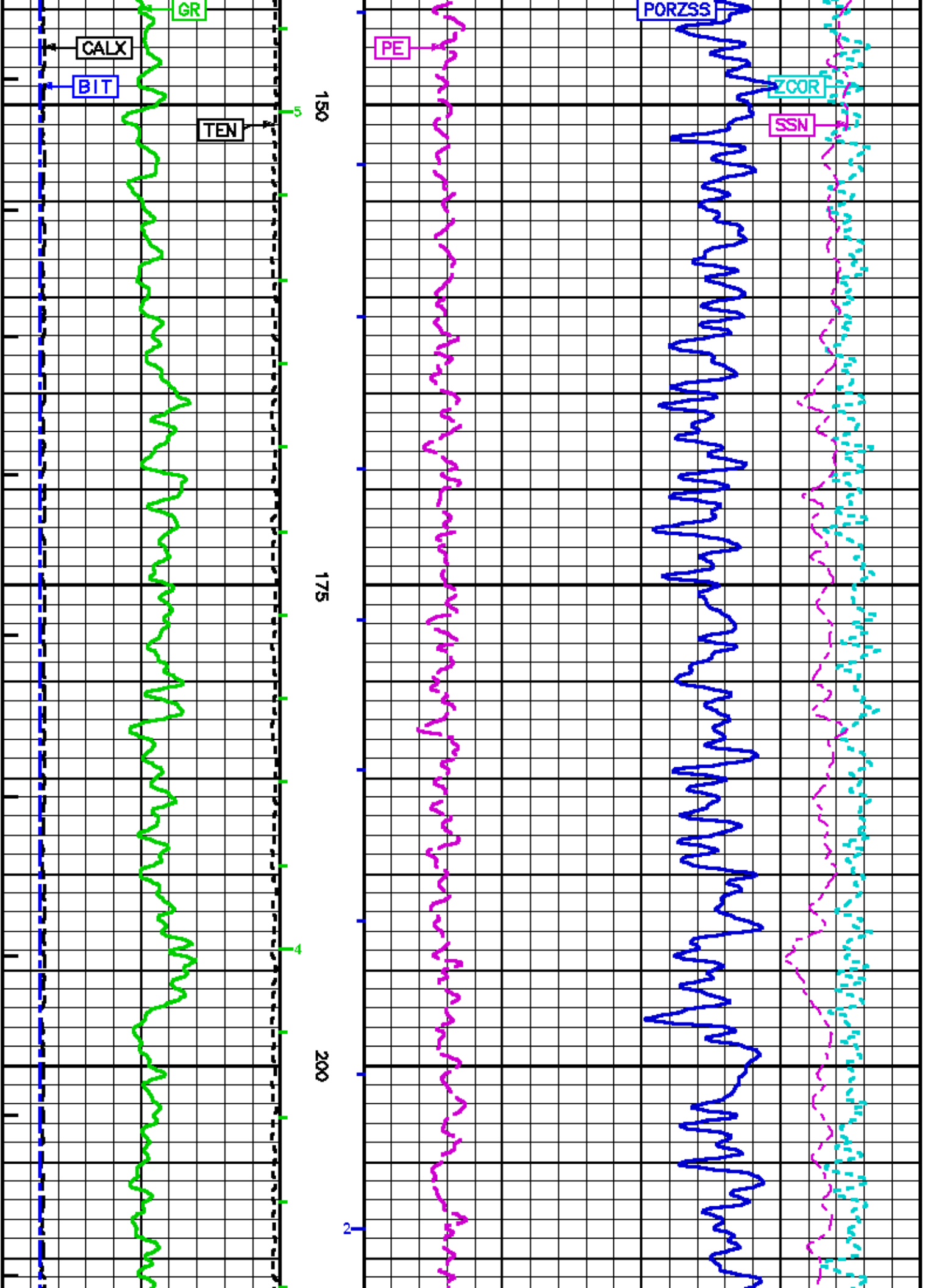
Data File 1 : F1 : cput:/data/pam/vul_fm3/1777.kr03.xdf
 Created On : Oct 13 23:51:57 2005
 Company : VULCAN MINERALS INC.
 Well : FLAT BAY B3
 Field : FLAT BAY
 File Interval : 98.1644 - 372.161 Meters
 Oct : 1777.kr

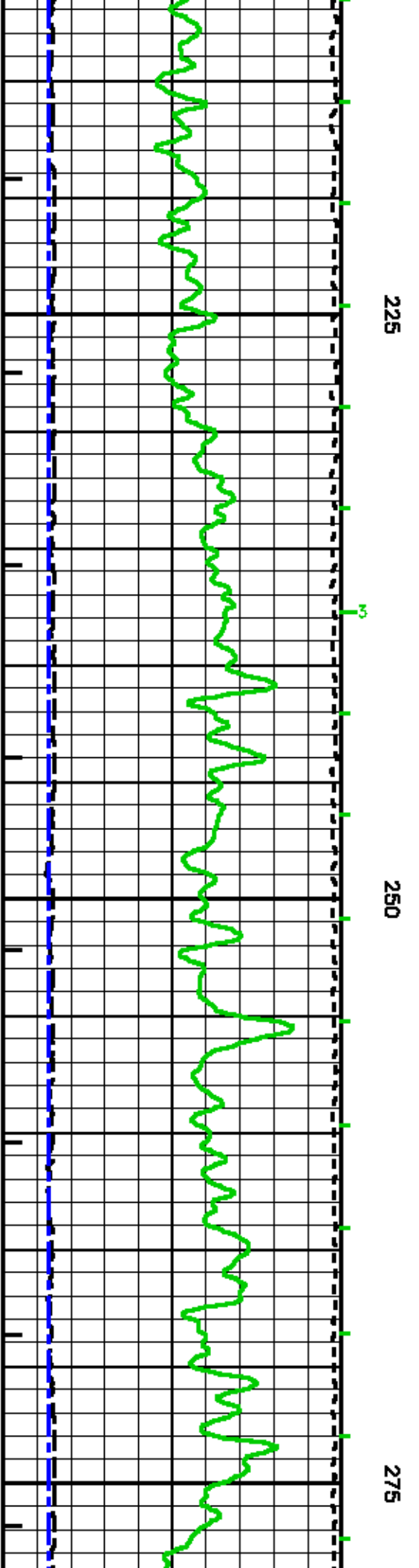
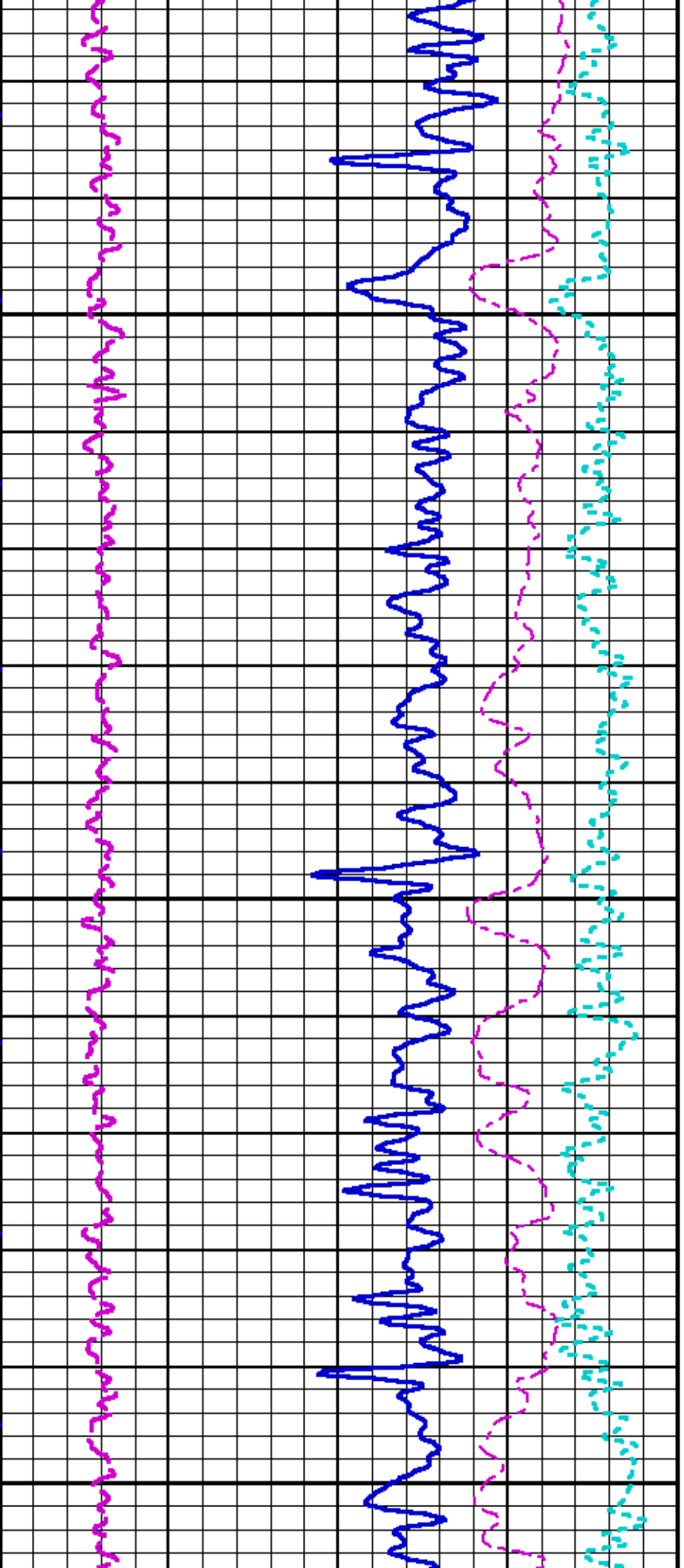


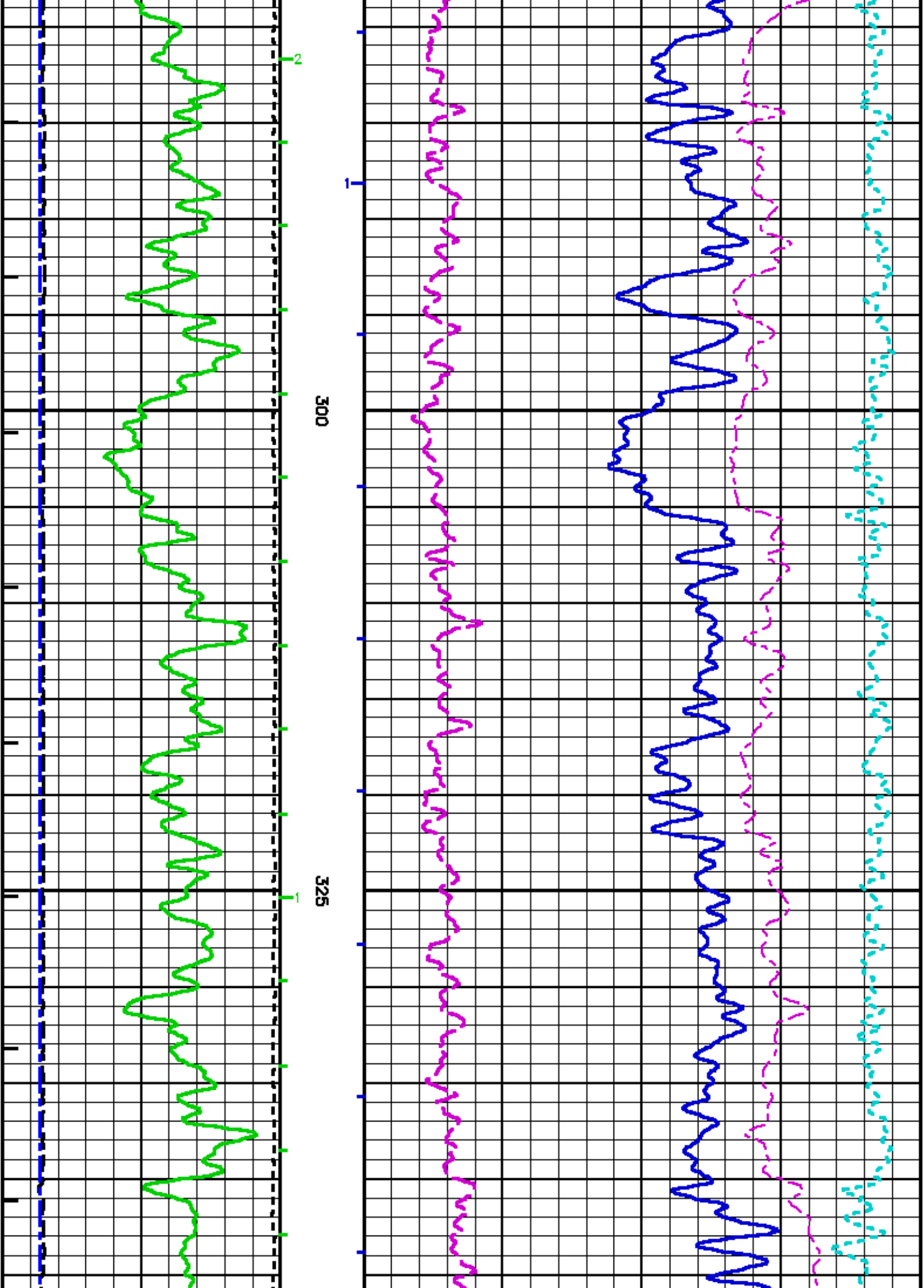


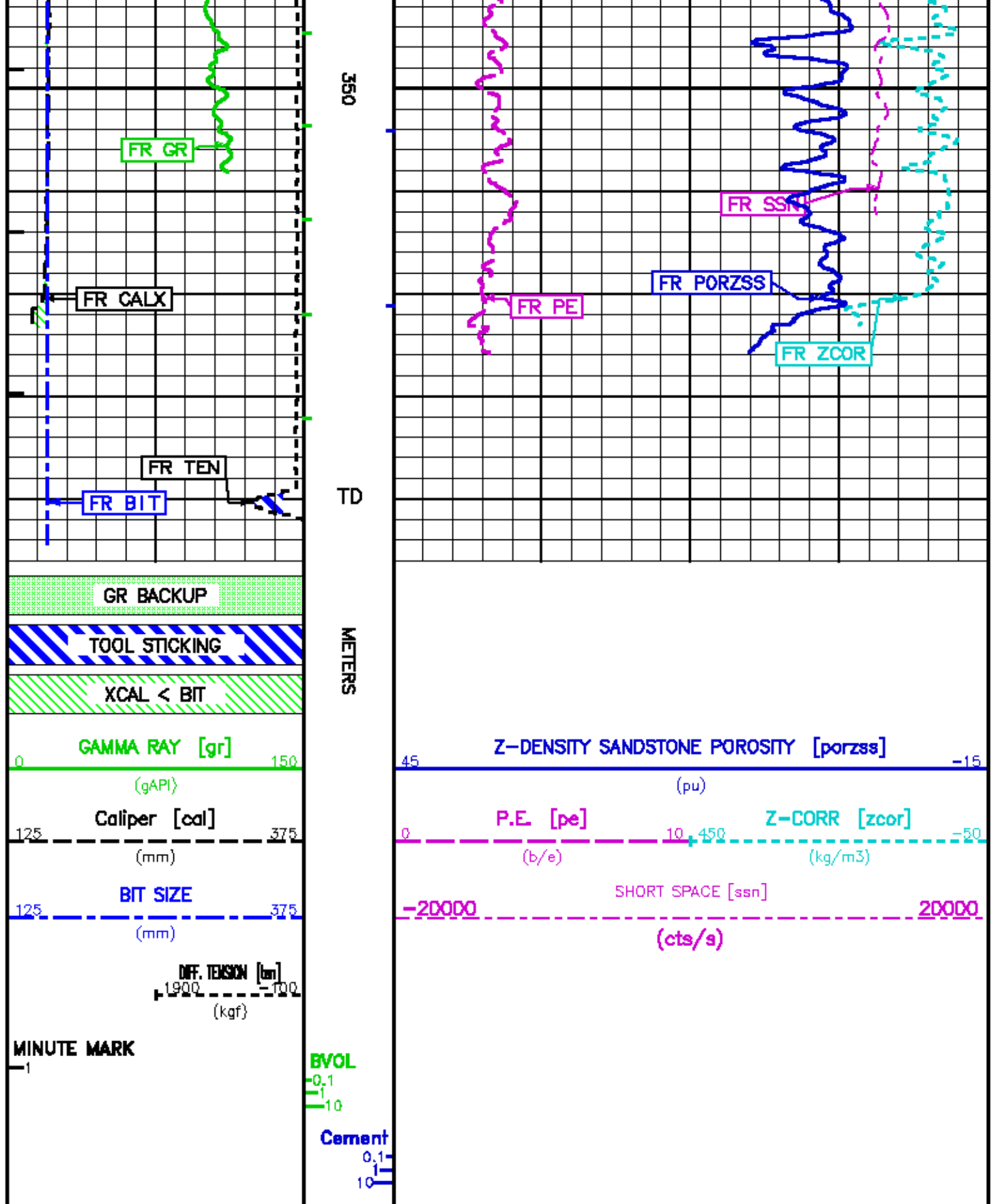
MINUTE MARK











CALIBRATION / VERIFICATION SUMMARY

GR PRIMARY CALIBRATION SUMMARY

TOOL #: 1329XA 153127

DATE/TIME PERFORMED: Fri Sep 23 16:47:10 2005

UNIT #: 3807TA 008616 CALB JIG #: 4702NK 01-304

	BACKGROUND CALBRTR ON (cts/s)	CR DIFF (cts/s)	MULT	BACKGROUND CALBRTR ON (gAPI)	CALBRTR (gAPI)
GR	142.98	1068.76	0.162	23.17	173.17
		870.0 980.0			150

GR PRIMARY VERIFICATION SUMMARY

TOOL #: 1329XA 153127

DATE/TIME PERFORMED: Fri Sep 23 16:53:36 2005

UNIT #: 3807TA 008616 VERI JIG #: 4702NK 01-304

	BACKGROUND CALBRTR ON (cts/s)	MULT	BACKGROUND CALBRTR ON (gAPI)	DIFF. (gAPI)
GR	139.98	0.162	22.68	149.46
	1062.42		172.14	140.00 160.00

GR BEFORE LOG VERIFICATION SUMMARY

TOOL #: 1329XA 153127

DATE/TIME PERFORMED: Thu Oct 13 20:13:13 2005

UNIT #: 3807TA 008616 VERI JIG #: 4702NK 01-304

	BACKGROUND CALBRTR ON (cts/s)	MULT	BACKGROUND CALBRTR ON (gAPI)	DIFF. (gAPI)
GR	94.73	0.162	15.35	151.16
	1027.67		166.51	139.46 159.46

GR AFTER LOG VERIFICATION SUMMARY

TOOL #: 1329XA 153127

DATE/TIME PERFORMED: Fri Oct 14 02:09:42 2005

UNIT #: 3807TA 008616 VERI JIG #: 4702NK 01-304

	BACKGROUND CALBRTR ON (cts/s)	MULT	BACKGROUND CALBRTR ON (gAPI)	DIFF. (gAPI)
GR	92.51	0.162	14.99	147.19
	1000.93		162.18	141.16 161.16

CN PRIMARY CALIBRATION SUMMARY

TOOL #: 2446XA 173080

DATE/TIME PERFORMED: Fri Sep 23 16:23:00 2005

UNIT #: 3807TA 008616

CALIBRATOR #: 2437XB 1131140

SOURCE #: 4717XS 048462

	MEASURED CPS	DEADTM CORR CPS	DTC SSN/LSN	NOMINAL SSN/LSN	CORRECTION FACTOR	POROSITY (pu)
LSN	754.45	768.36				
SSN	1980.28	2061.95				
RATIO			2.68356	2.75100	1.02513 0.97000 1.07000	
CN						21.358

CN PRIMARY VERIFICATION SUMMARY

TOOL #: 2446XA 173080

DATE/TIME PERFORMED: Fri Sep 23 16:31:51 2005

UNIT #: 3807TA 008616

ICE BLOCK #: 4717ND 00T-210

	MEASURED CPS	DEADTM CORR CPS	DTC SSN/LSN	CORRECTION FACTOR	DTC CORR SSN/LSN	POROSITY (pu)
LSN	1002.36	1027.09				
SSN	1253.32	1285.57				
RATIO			1.25167	1.02513	1.28436	
CN						3.255

CN BEFORE LOG VERIFICATION SUMMARY

TOOL #: 2446XA 173080

DATE/TIME PERFORMED: Thu Oct 13 20:08:03 2005

UNIT #: 3807TA 008616

ICE BLOCK #: 4717ND 00T-210

	MEASURED CPS	DEADTM CORR CPS	DTC SSN/LSN	CORRECTION FACTOR	DTC CORR SSN/LSN	POROSITY (pu)
LSN	930.41	951.69				
SSN	1224.31	1255.07				
RATIO			1.31878	1.02513	1.35380	
CN						4.022 1.255 5.255

CN AFTER LOG VERIFICATION SUMMARY

TOOL #: 2446XA 173080

DATE/TIME PERFORMED: Fri Oct 14 02:03:44 2005

UNIT #: 3807TA 008616

ICE BLOCK #: 4717ND 00T-210

	MEASURED CPS	DEADTM CORR CPS	DTC SSN/LSN	CORRECTION FACTOR	DTC CORR SSN/LSN	POROSITY (pu)
LSN	982.61	1006.37				
SSN	1218.92	1249.40				
RATIO			1.24150	1.02513	1.27394	
CN						3.140 2.022 6.022

CAL PRIMARY CALIBRATION SUMMARY

TOOL #: 2228MA 153038

DATE/TIME PERFORMED: Fri Sep 23 18:29:49 2005

UNIT #: 3807TA 008616

	SMALL RING (raw)	LARGE RING (raw)	MULT	ADD	SMALL RING (mm)	LARGE RING (mm)
CALIPER	1415.0	2361.5	0.16101	-75.43520	152.400	304.800

CAL BEFORE LOG VERIFICATION SUMMARY

TOOL #: 2228MA 153038

DATE/TIME PERFORMED: Thu Oct 13 23:23:00 2005

UNIT #: 3807TA 008616

	I.D. (raw)	MULT	ADD	I.D. (mm)
CALIPER	1477.4	0.16101	-75.43520	162.447

CAL AFTER LOG VERIFICATION SUMMARY

TOOL #: 2228MA 153038

DATE/TIME PERFORMED: Fri Oct 14 00:36:17 2005

UNIT #: 3807TA 008616

	I.D. (raw)	MULT	ADD	I.D. (mm)
CALIPER	1552.3	0.16101	-75.43520	174.507 148.747 175.147

ZDL PRIMARY CALIBRATION SUMMARY

TOOL #: 2228MA 153038

DATE/TIME PERFORMED: Fri Sep 23 17:54:07 2005

UNIT #: 3807TA 008616

CALB. BLOCK SET: 2225XA 112691

CS SOURCE #: 4703NT 001012

	SSD-NDTC (cts/s)	HRD1-NDTC (cts/s)	HRD2-NDTC (cts/s)	SHR	DEN (kg/m ³)	CORR (kg/m ³)	PE (b/e)
MG BLOCK (LO PE)	10938.9	4475.3	5445.4	0.676 0.625 0.725	1691.000	9.000	2.187
AL BLOCK	5490.5	457.6	582.0		2683.000	-12.000	
AL+SHIM (CORR)	7624.1	803.4	987.2		2607.000	169.000	
MG+SHIM (HI PE)		2152.7	2766.9	0.281 0.280 0.310			10.177
RATIO MG/AL	1.99 1.97 2.07	9.78 8.83 10.40	9.36 8.75 9.75				

BACKGROUND (cts/s)	CS PEAK CHANNEL #	AM PEAK CHANNEL #
952.7	228.2 225.0 235.0	23.1 21.0 25.0

ZDL PRIMARY VERIFICATION SUMMARY

TOOL #: 2228MA 153038

DATE/TIME PERFORMED: Fri Sep 23 18:02:40 2005

UNIT #: 3807TA 008616

VERI. JIG #: 4704NA 1120/1128

	SSD-NDTC (cts/s)	HRD1-NDTC (cts/s)	HRD2-NDTC (cts/s)	SHR	DEN (kg/m ³)	CORR (kg/m ³)	PE (b/e)
FIELD BLOCK	8710.0	1853.1	4424.2	0.186	1829.779	-71.057	15.527

ZDL BEFORE LOG VERIFICATION SUMMARY

TOOL #: 2228MA 153038

DATE/TIME PERFORMED: Thu Oct 13 20:13:18 2005

UNIT #: 3807TA 008616

VERI. JIG #: 4704NA 1120/1128

	SSD-NDTC (cts/s)	HRD1-NDTC (cts/s)	HRD2-NDTC (cts/s)	SHR	DEN (kg/m ³)	CORR (kg/m ³)	PE (b/e)
FIELD BLOCK	8598.8	1851.8	4427.9	0.184 0.186 0.208	1817.446 1804.779 1834.778	-83.226 -86.057 -46.057	15.607

ZDL AFTER LOG VERIFICATION SUMMARY

TOOL #: 2228MA 153038

DATE/TIME PERFORMED: Fri Oct 14 02:01:59 2005



UNIT #: 3807TA 008616

DATE TIME PERFORMED: 13 OCT 11 02:01:53 2005

UNIT #: 3807TA 008616

VERI. JIG #: 4704NA 1120/1128

	SSD-NDTC (cts/s)	HRD1-NDTC (cts/s)	HRD2-NDTC (cts/s)	SHR	DEN (kg/m3)	CORR (kg/m3)	PE (b/e)
FIELD BLOCK	8600.4	1858.1	4415.8	0.186	1818.316	-82.767	15.537
				0.184 0.204	1792.448 1842.448	-108.228 -58.228	

	COMPANY <u>VULCAN MINERALS INC.</u>	FILE NO: _____
	WELL <u>FLAT BAY NO. 3</u>	API NO: _____
Baker Atlas	FIELD <u>FLAT BAY</u>	
	PROVINCE <u>NEWFOUNDLAND</u>	
	LOCATION: LIC: 86-105 ST. GEORGES BAY LAT 48.385334 N LONG 58.560253 W	ELEVATIONS: KB 53.3 M DF GL 50.0 M DATE 13-OCT-2005