

Strike Slip Basin Sedimentation

- subsidence often asymmetrical resulting in rapid lateral changes in sediment thickness and facies
- on land: alluvial fans along active marginal faults, passing into fluvial and lacustrine facies towards basin centre
- volcanism along extensional faults
- evaporites in internal drainage basins in hot, arid climates (e.g. Dead Sea rift.)

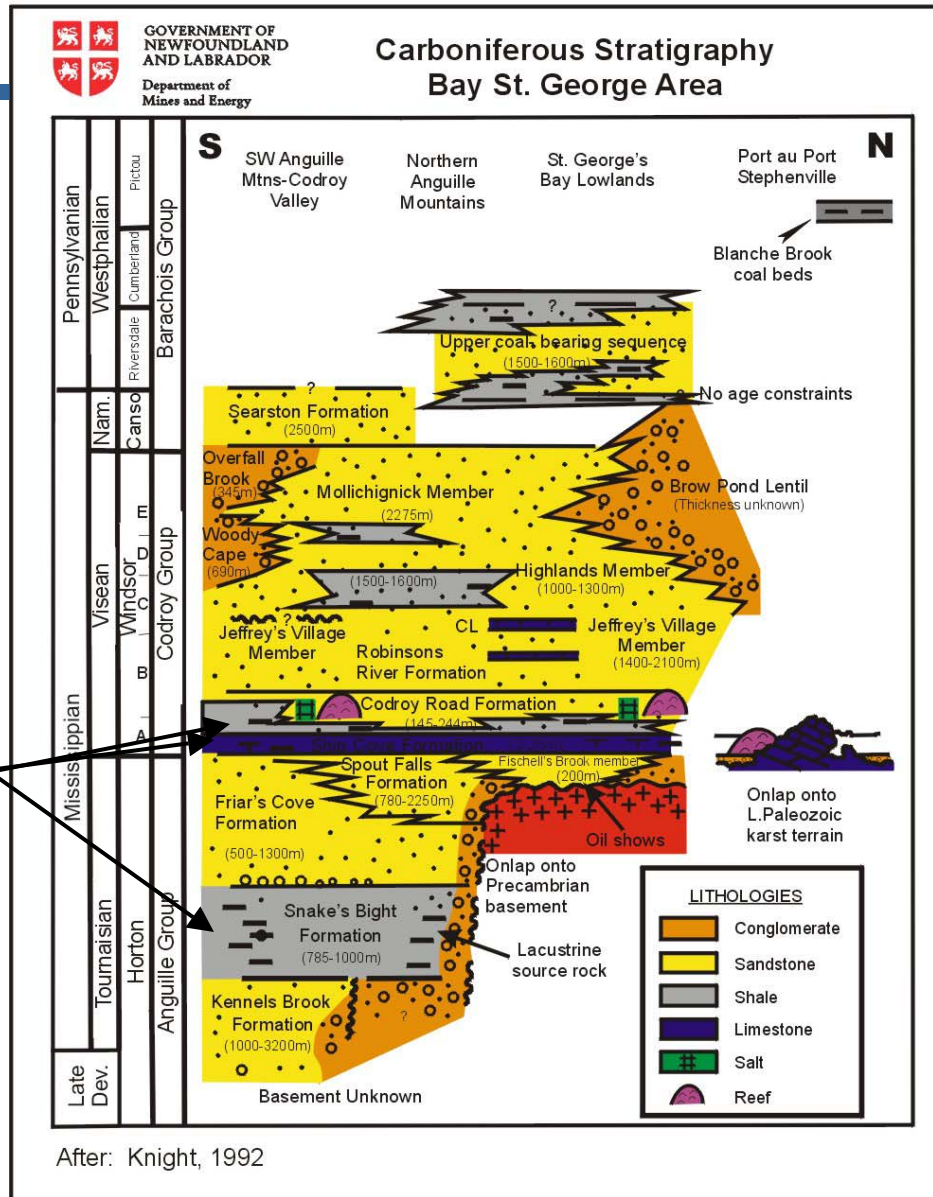
Oxford Brookes University
Homepage



Mines and Energy

Government of *Newfoundland
& Labrador*

Bay St. George Area Stratigraphic Chart



Possible Source Rocks

Non-marine

Marine

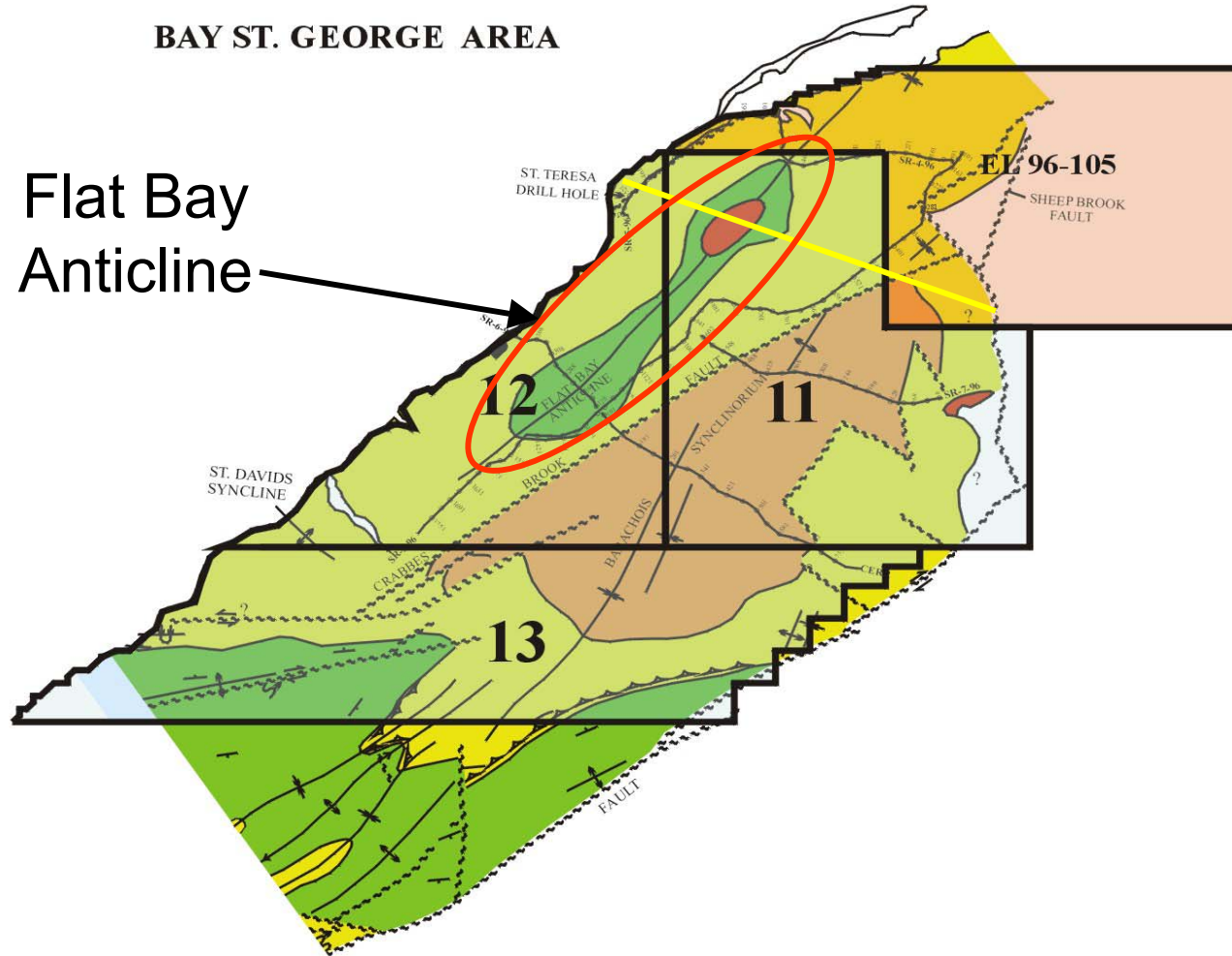
Non-Marine

Lithostratigraphy of the Bay St. George Sub-basin



BAY ST. GEORGE AREA

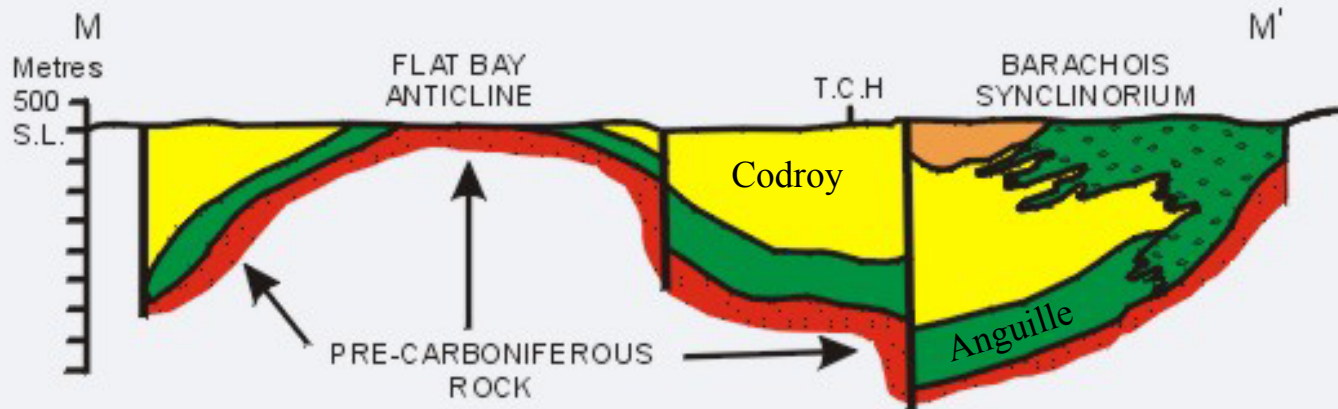
Flat Bay Anticline



For illustrative purposes only. Only released seismic lines are shown



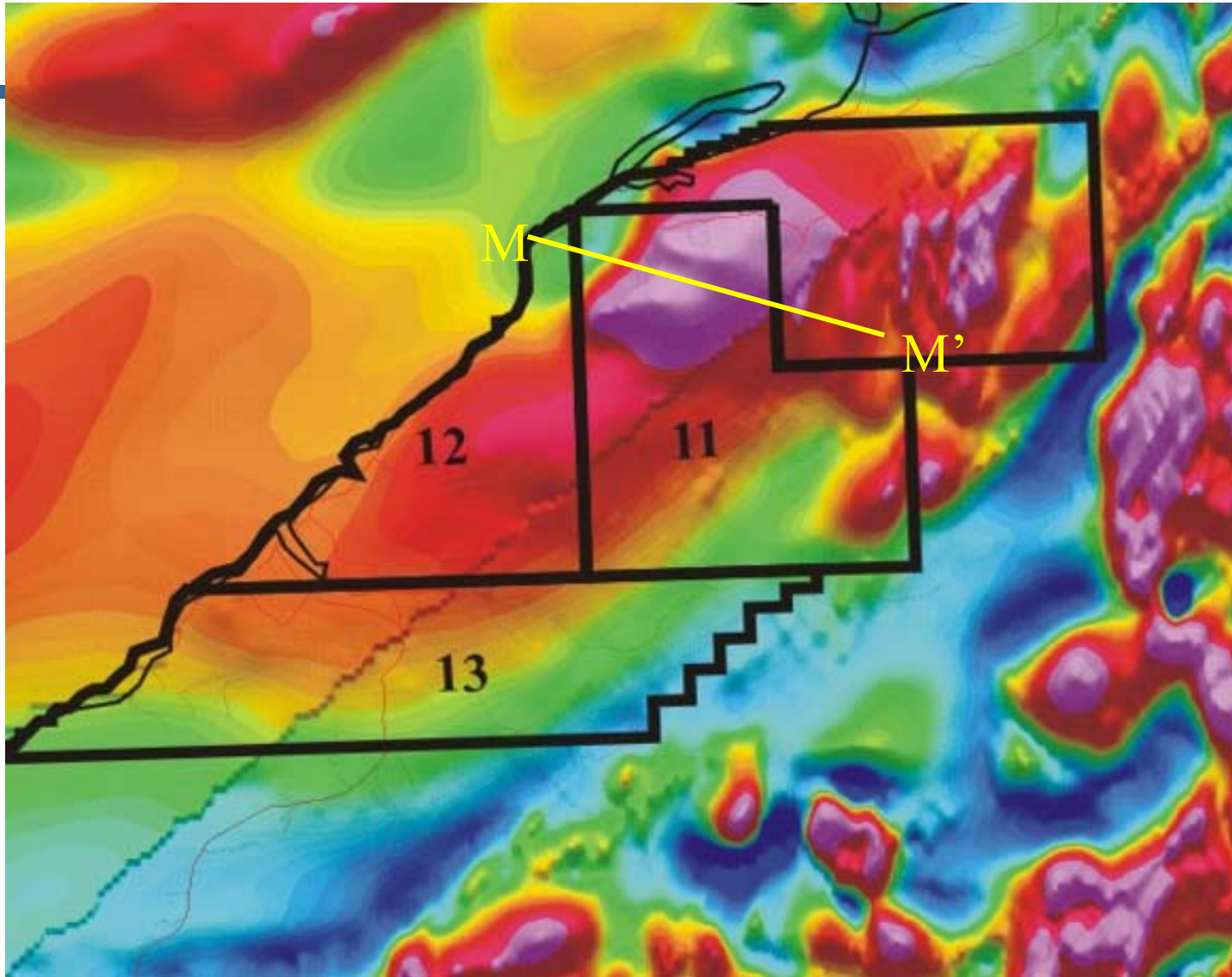
INTERPRETIVE GEOLOGICAL CROSS SECTION OF THE BAY ST. GEORGE SUBBASIN



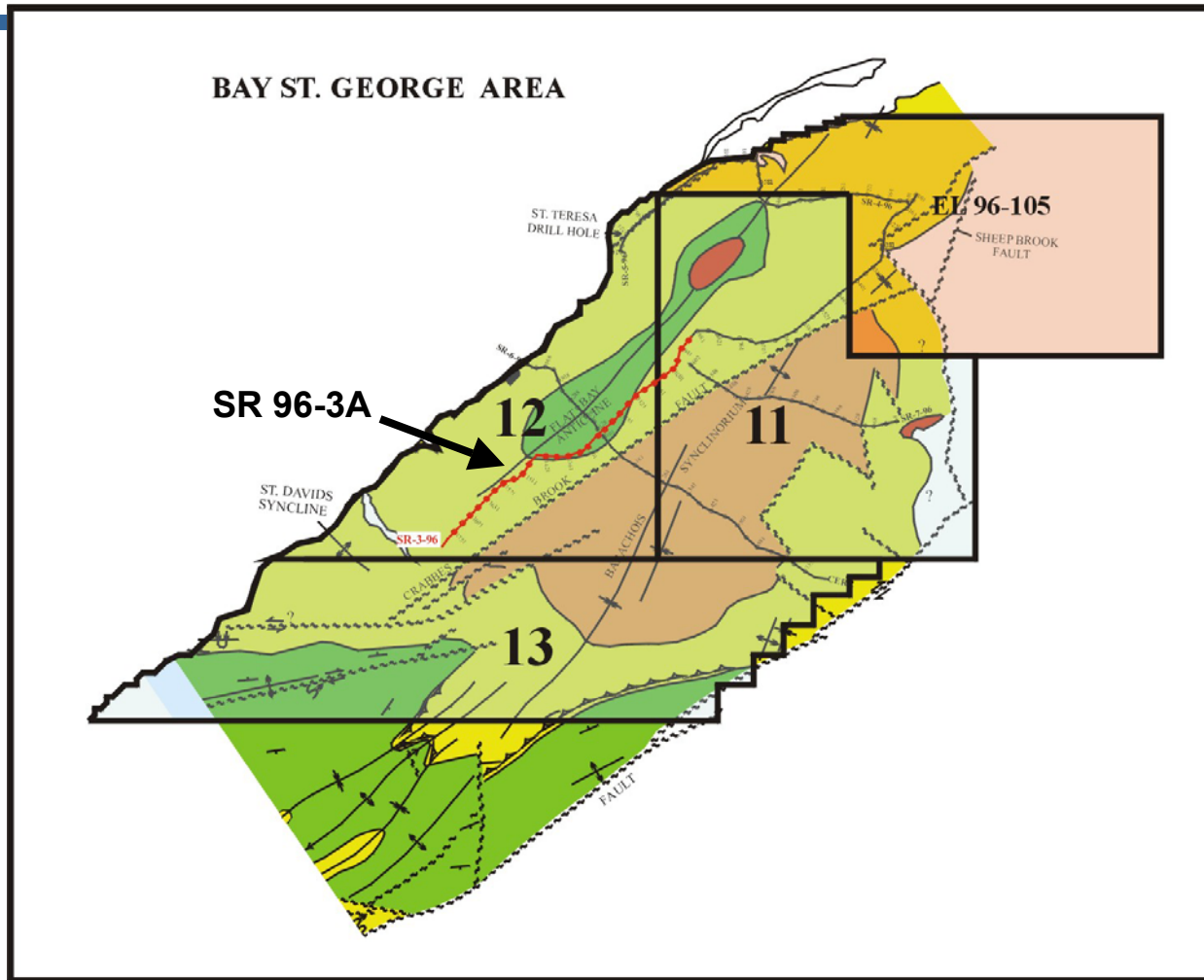
Knight, 1983



MAG DATA



REQUEST FOR BIDS 2002 PARCELS - WITH SURFACE GEOLOGY



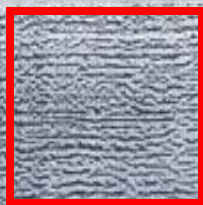
For illustrative purposes only. Only released seismic lines are shown



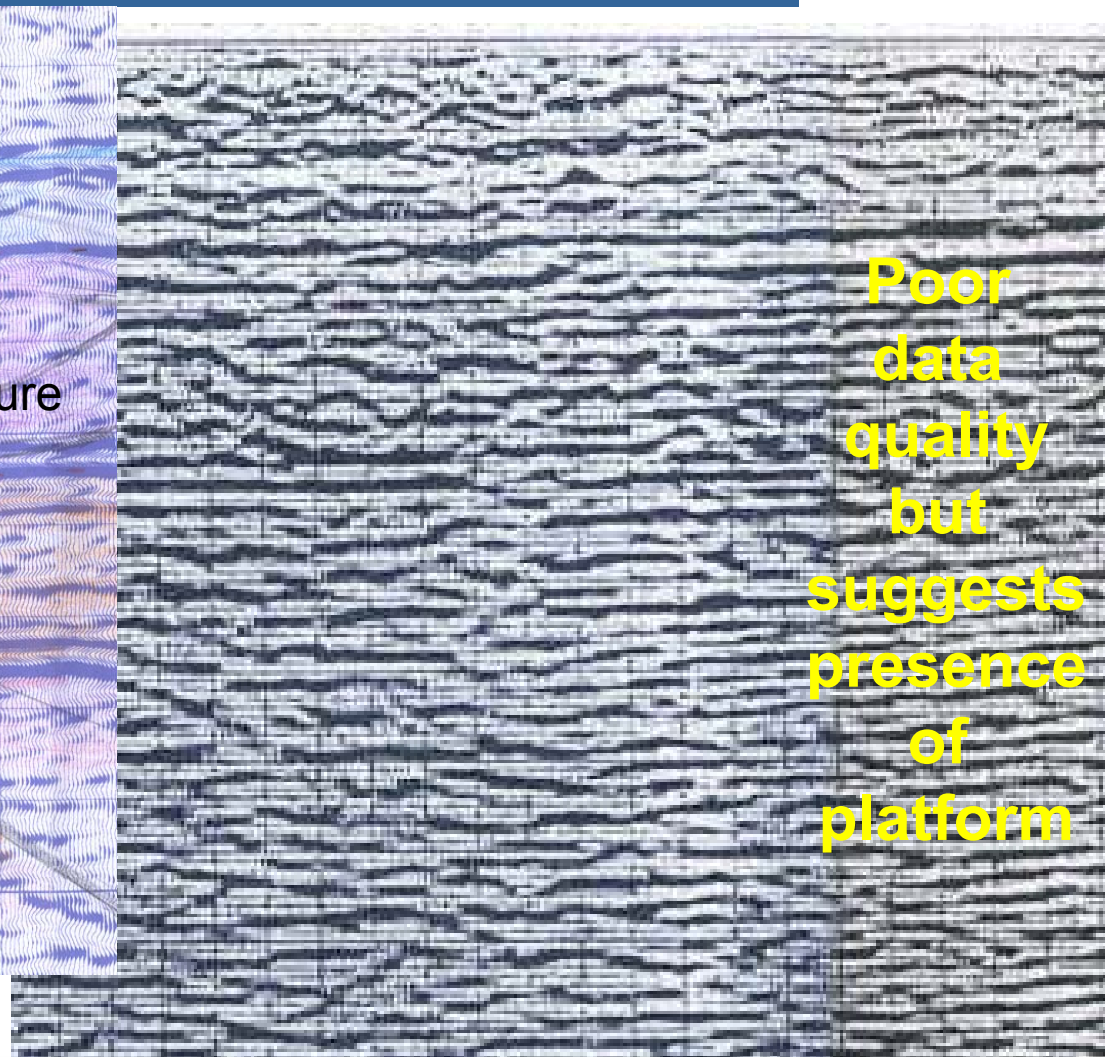
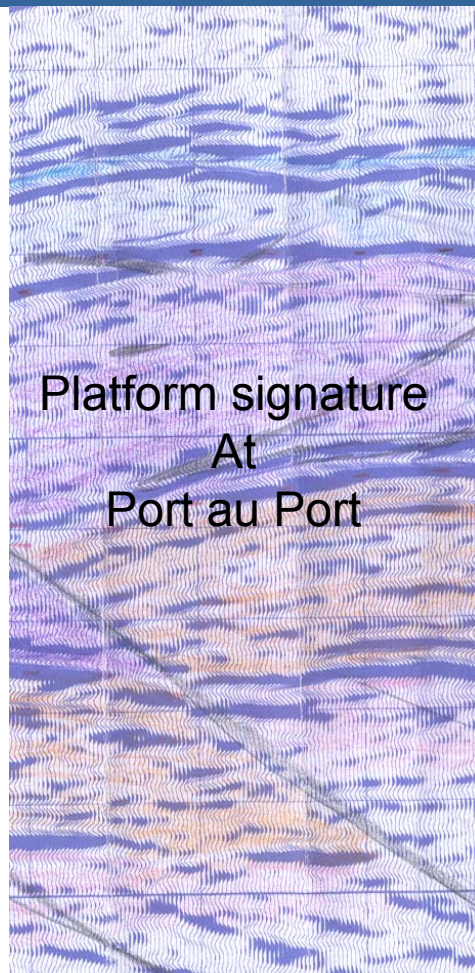
SW

Line SR 96-3A

NE



Is the Cambro-Ordovician Platform present in this area?



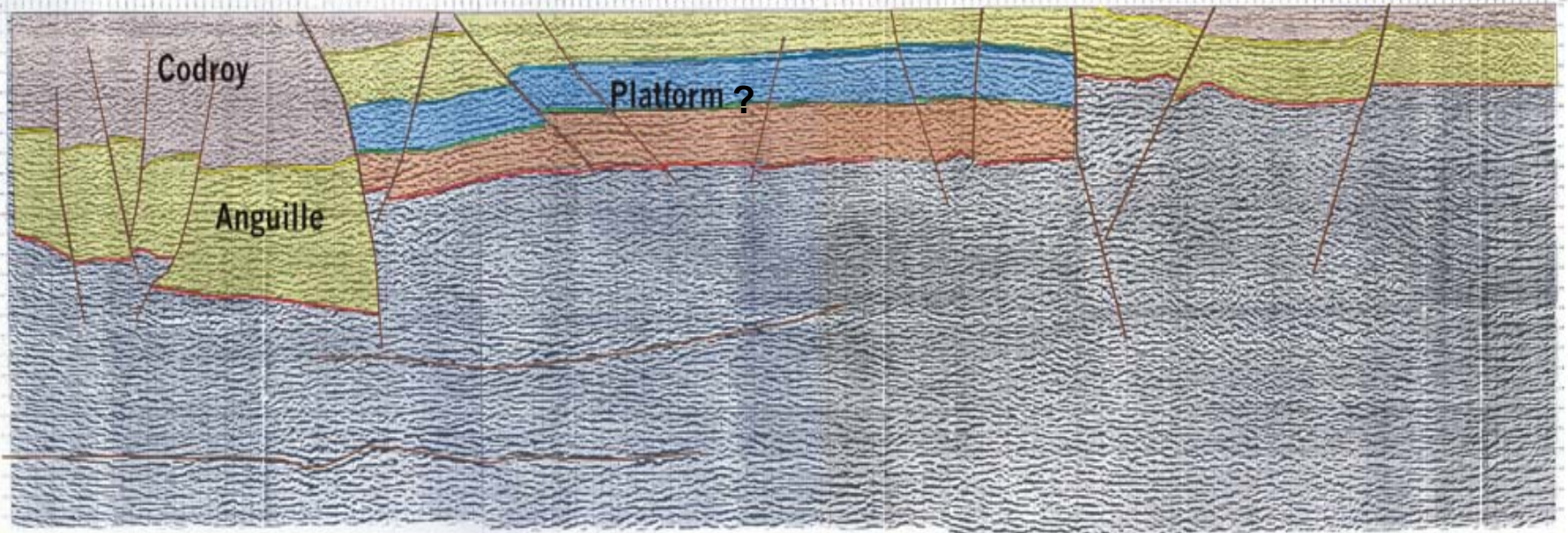
Poor
data
quality
but
suggests
presence
of
platform



SW

Line SR 96-3A

NE



4 Km

Mines and Energy

Government of *Newfoundland & Labrador*



Mag data suggests presence of thicker sediments over the SW part of the Flat Bay anticline

