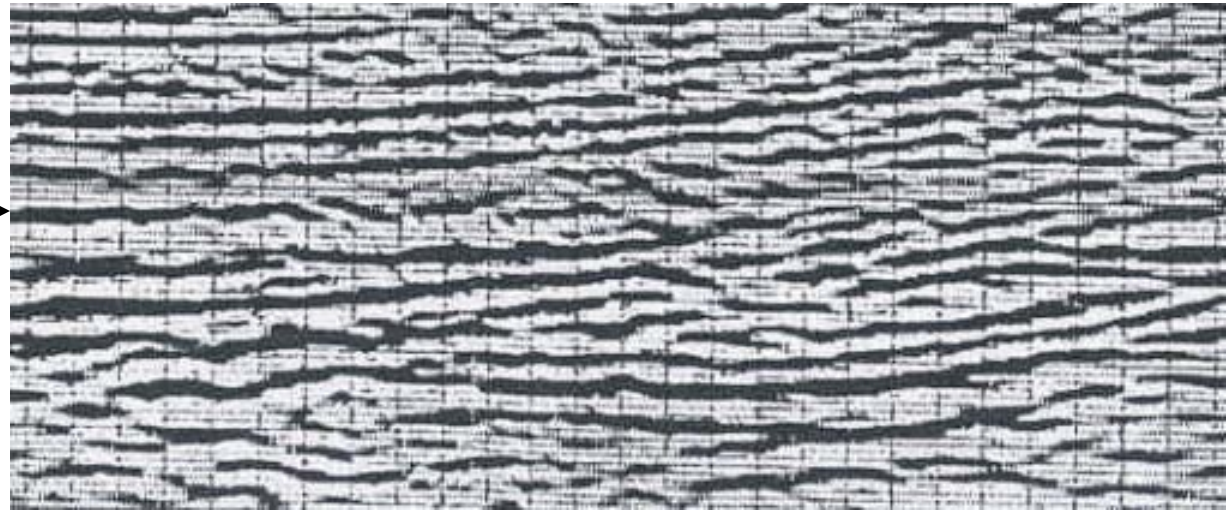
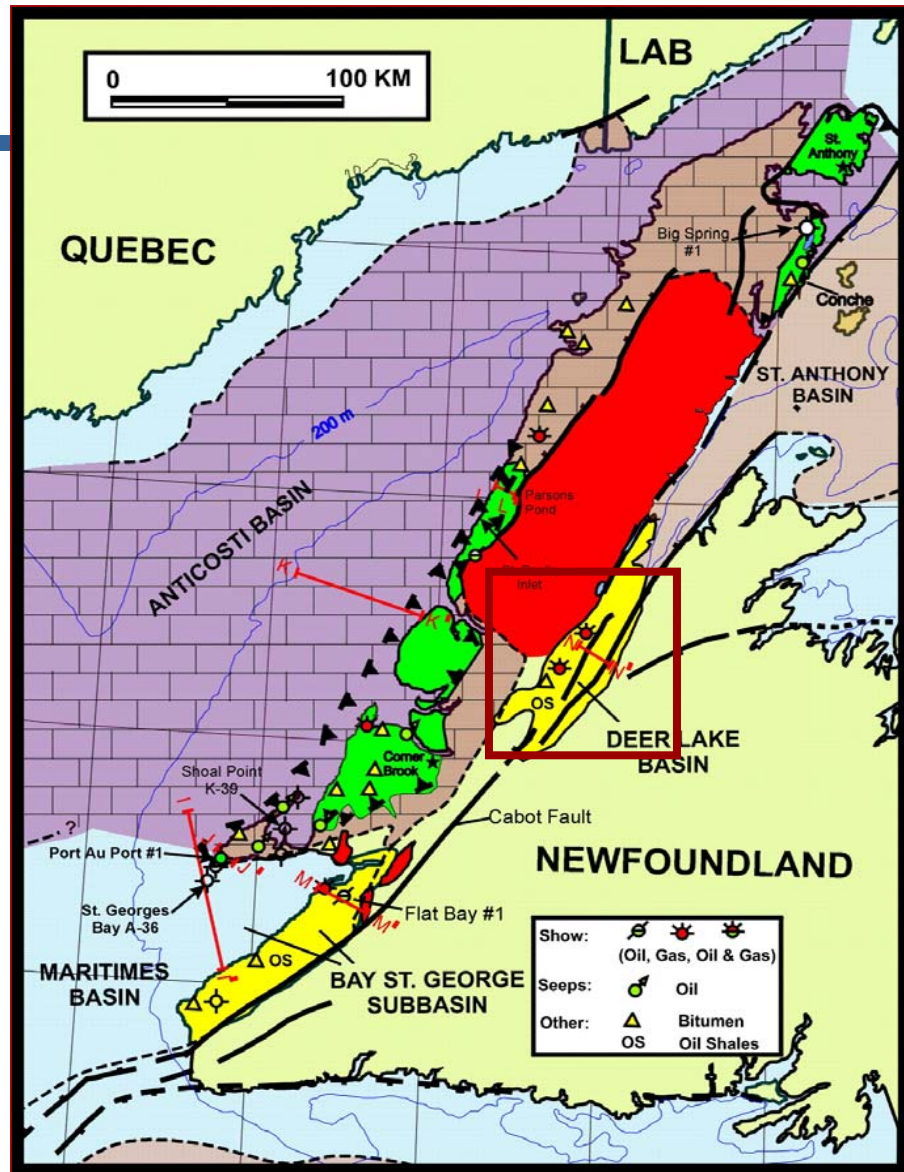


# Line SR 005 Anguille Anomalies

Reefs observed  
in outcrop at  
approximately  
this level –  
estimated here  
based on  
stratigraphic  
location in the  
seismic section



# Deer Lake Area



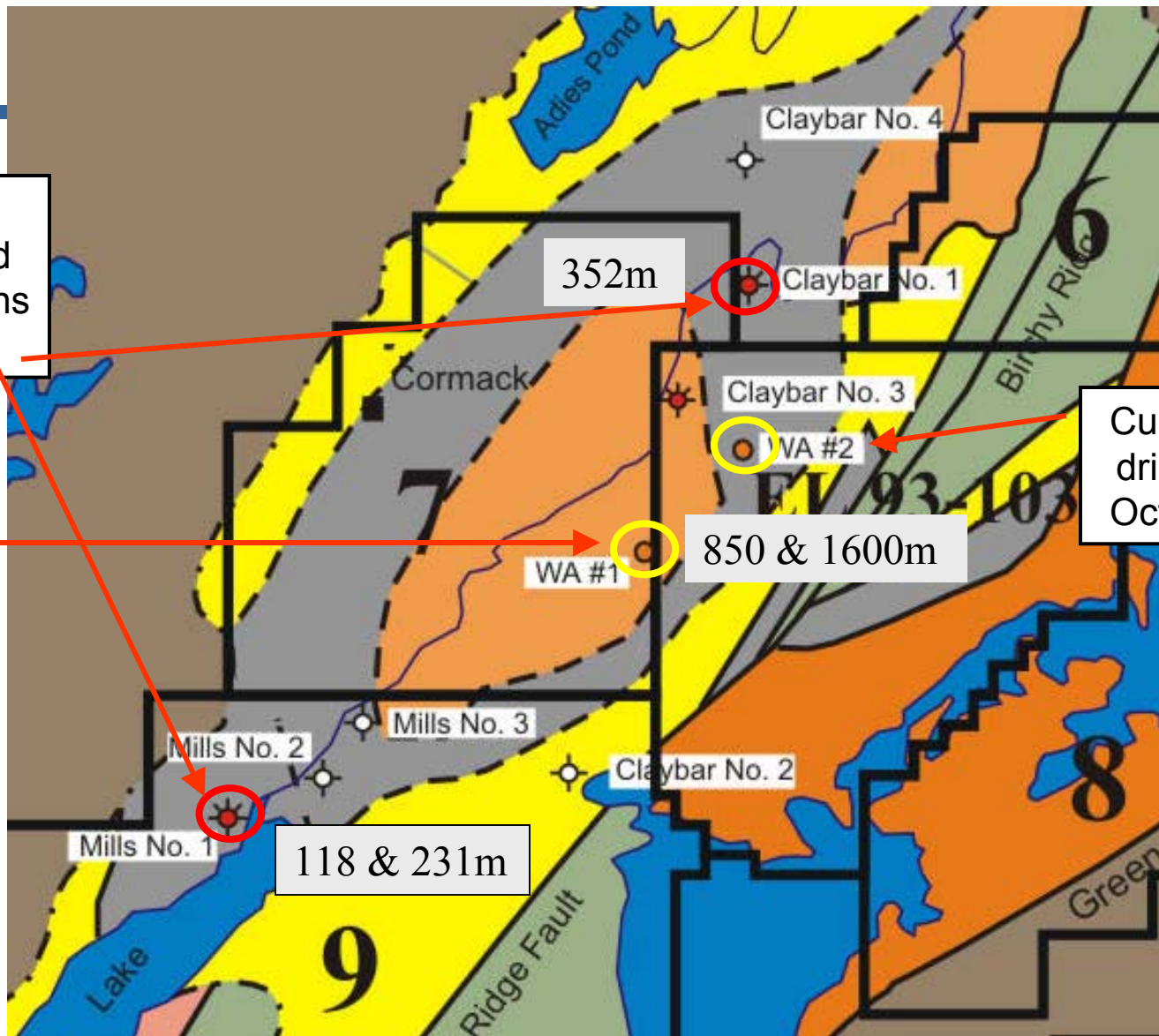


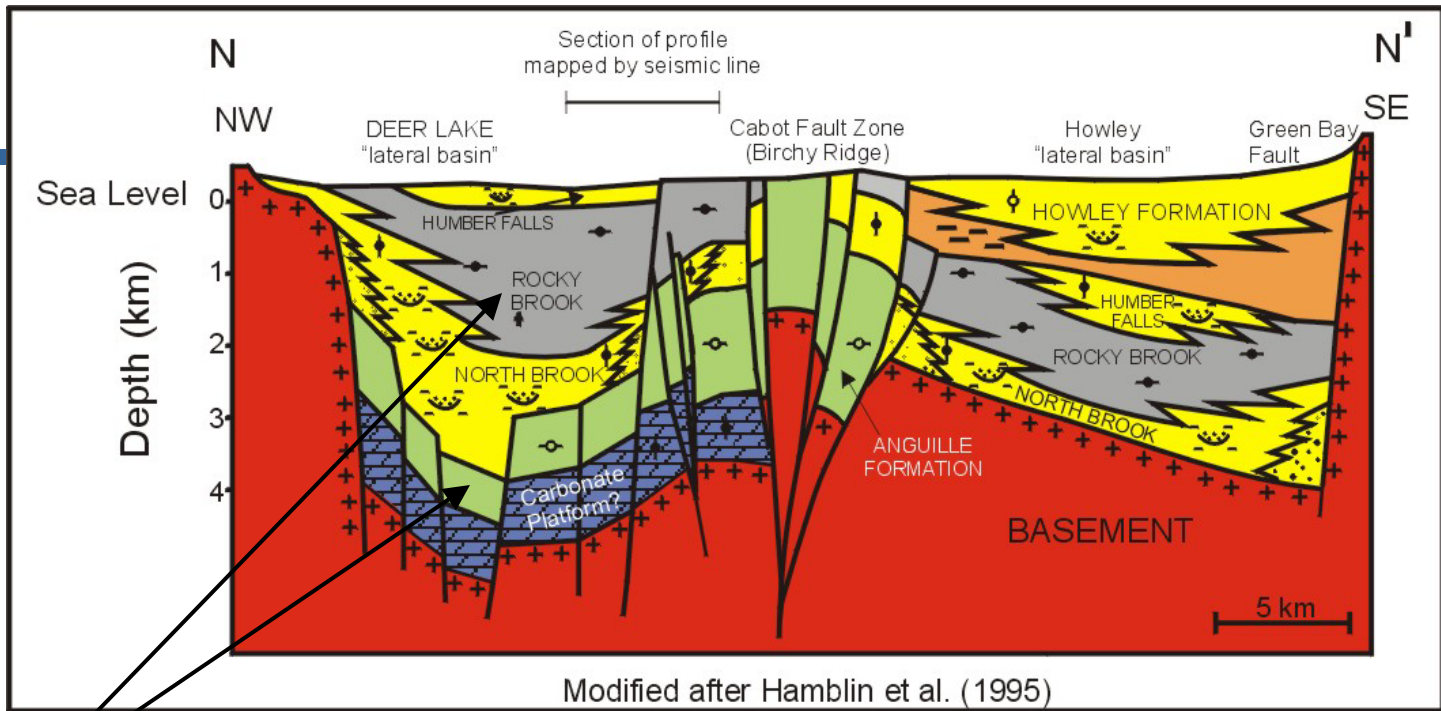


Old wells in this area had very good gas shows at depths Shown

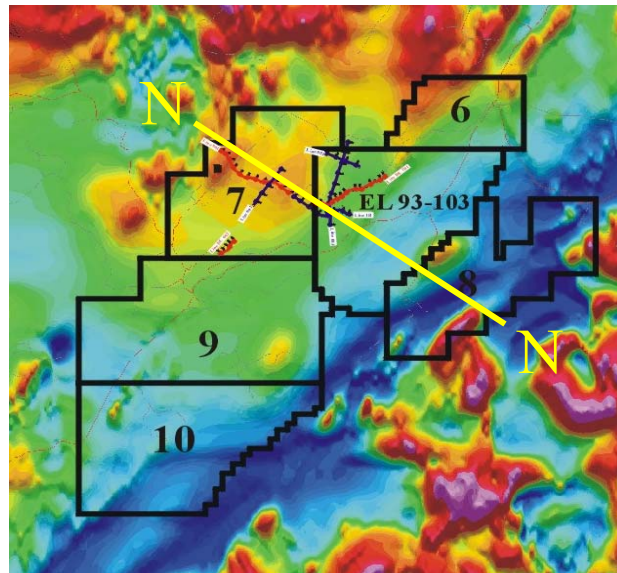
WA#1 had condensate Show at 850m & tested 100,000 cubic feet per day at 1600m

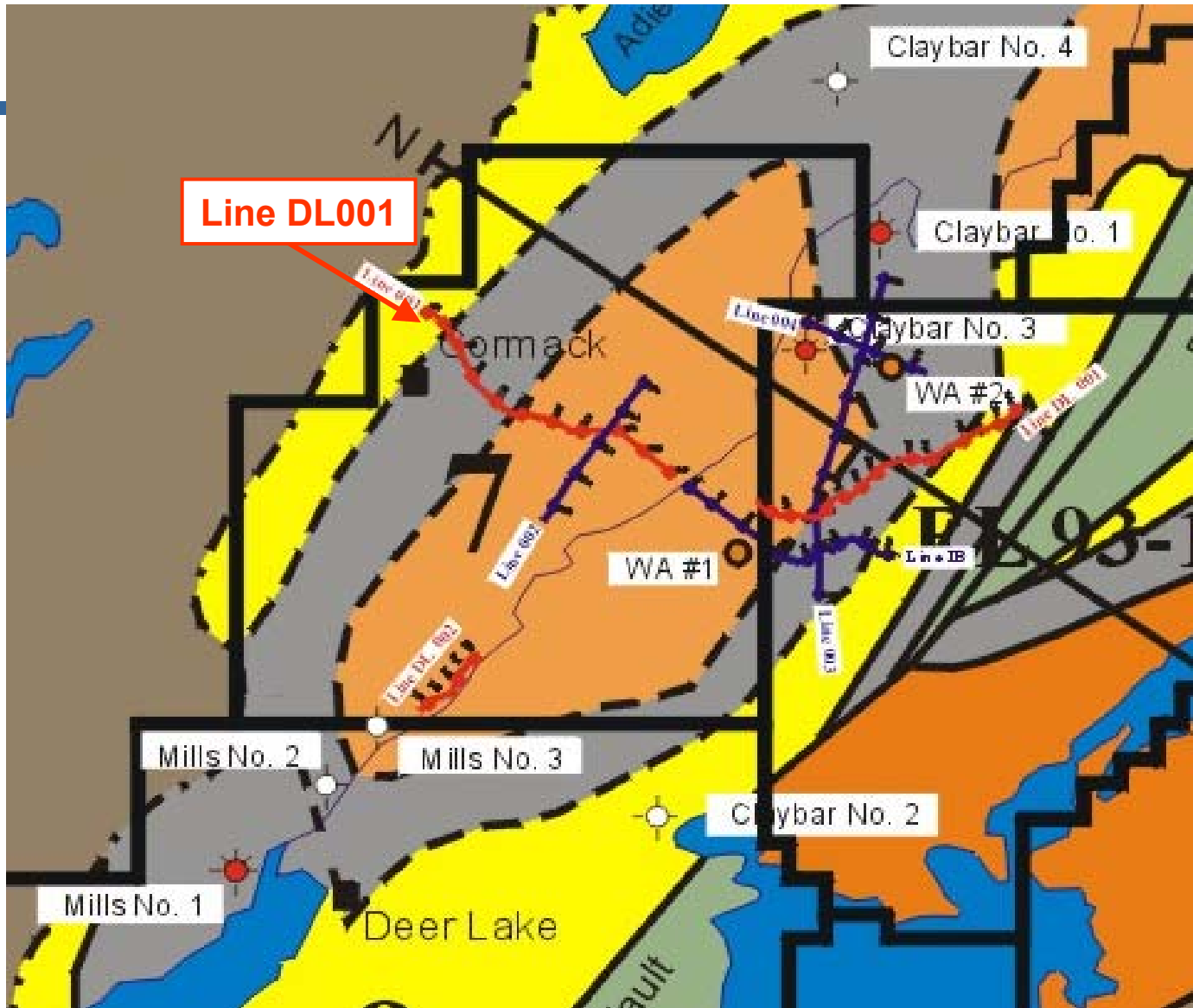
Currently drilling – Oct 2002





Possible source rocks





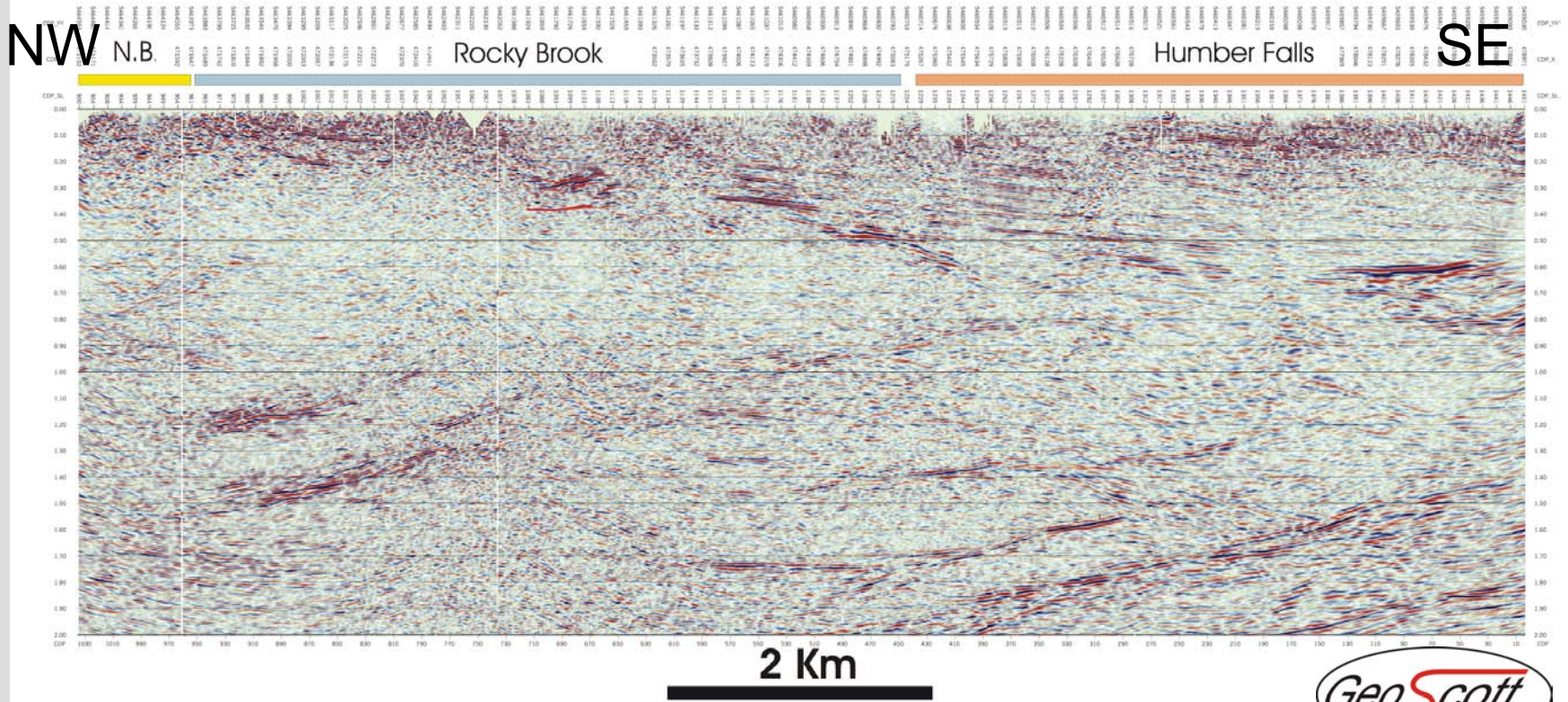
**Line DL001**

**Mines and Energy**





# Line DL 001





# Line DL 001

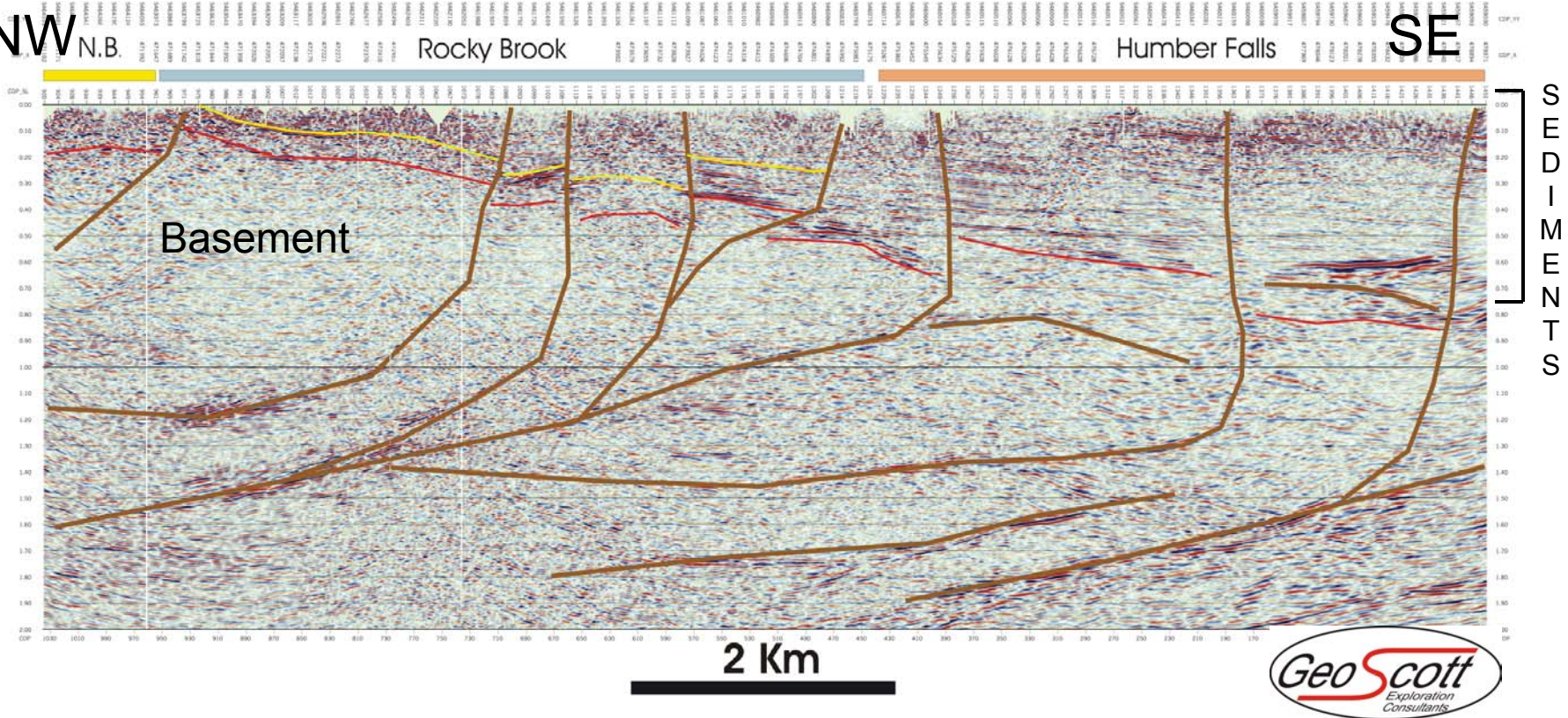
NW

N.B.

Rocky Brook

Humber Falls

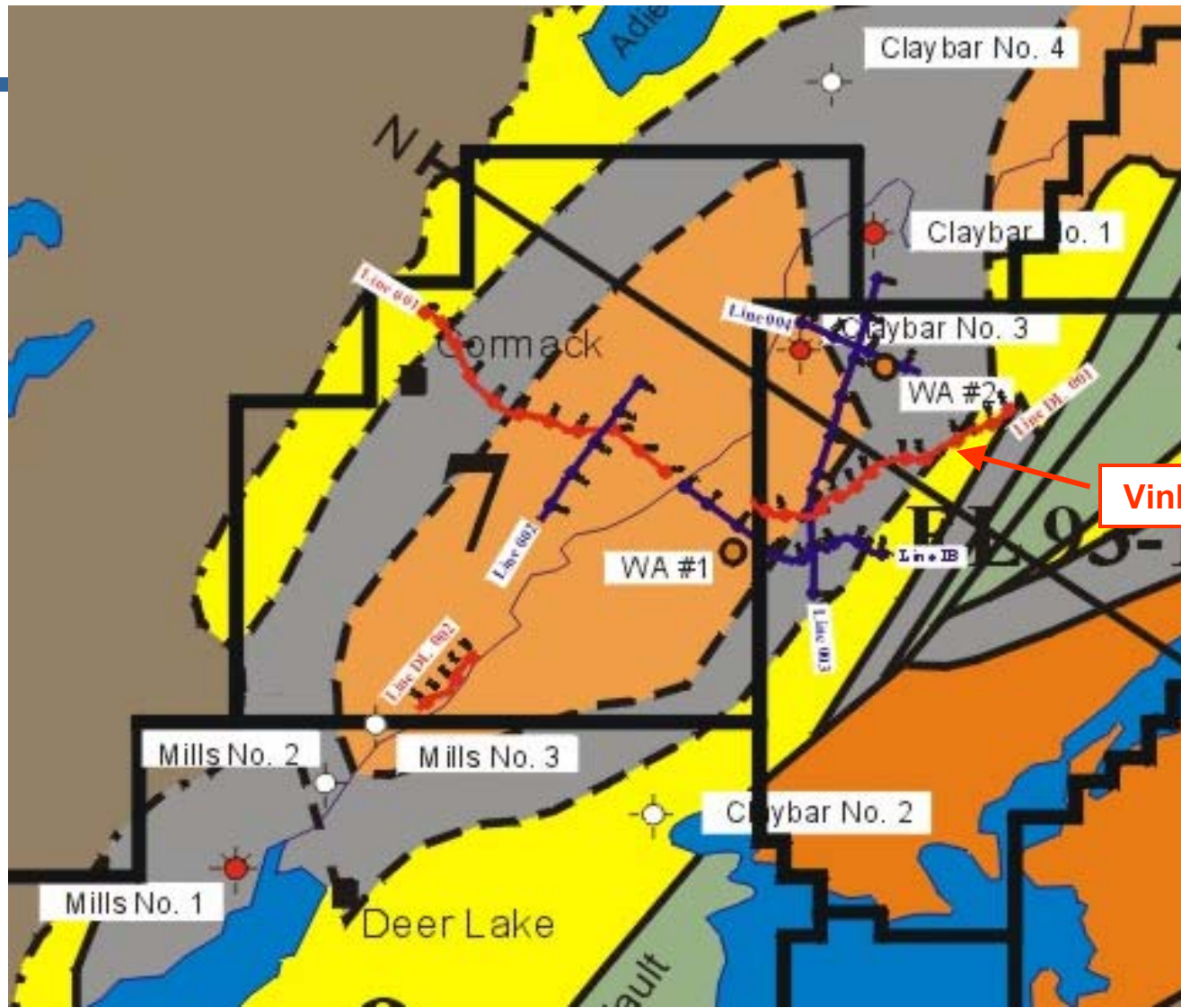
SE



**Mines and Energy**

Government of Newfoundland  
& Labrador





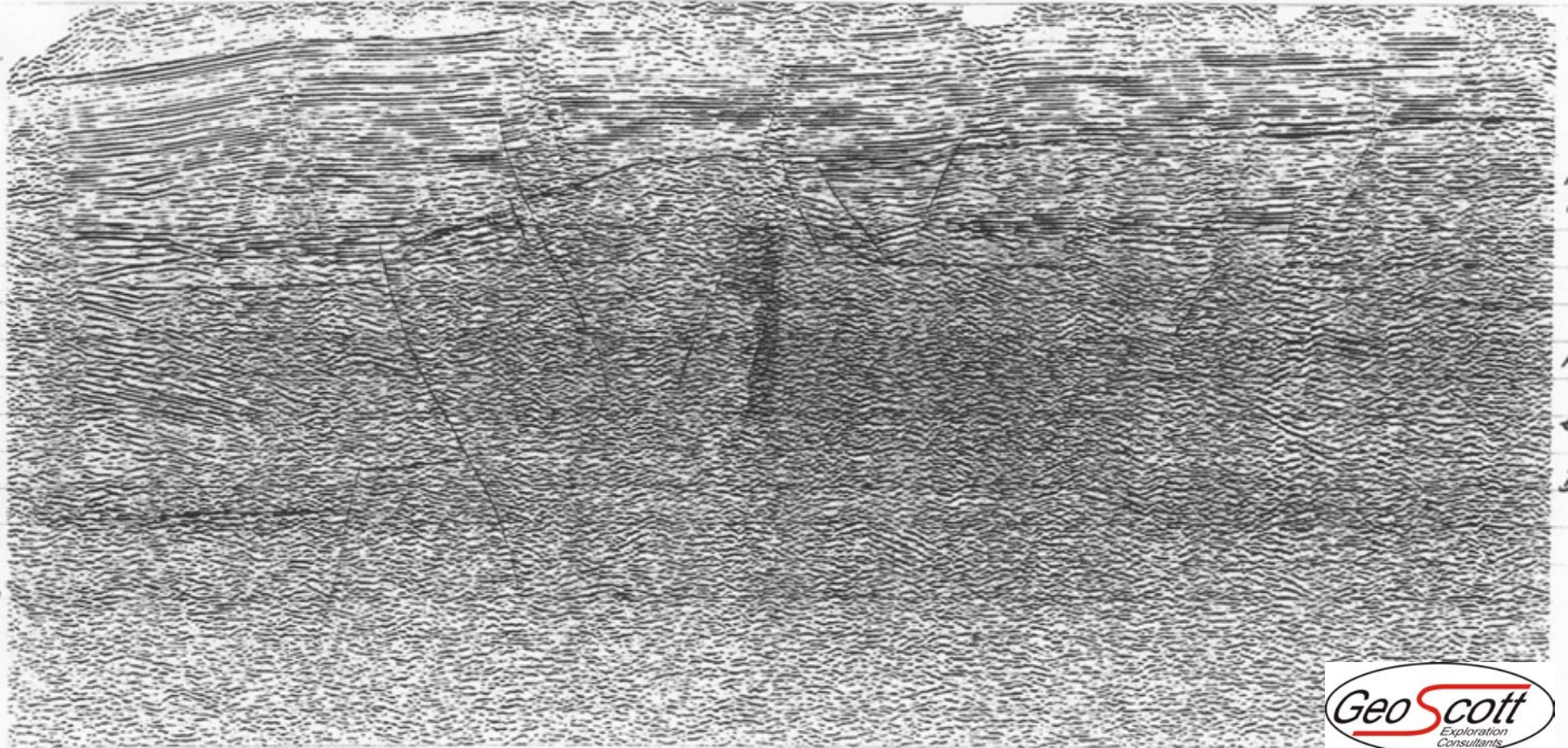
Vinland Line 1



# Vinland Line 001 – Deer Lake

SW

NE





# Parsons Pond Area

