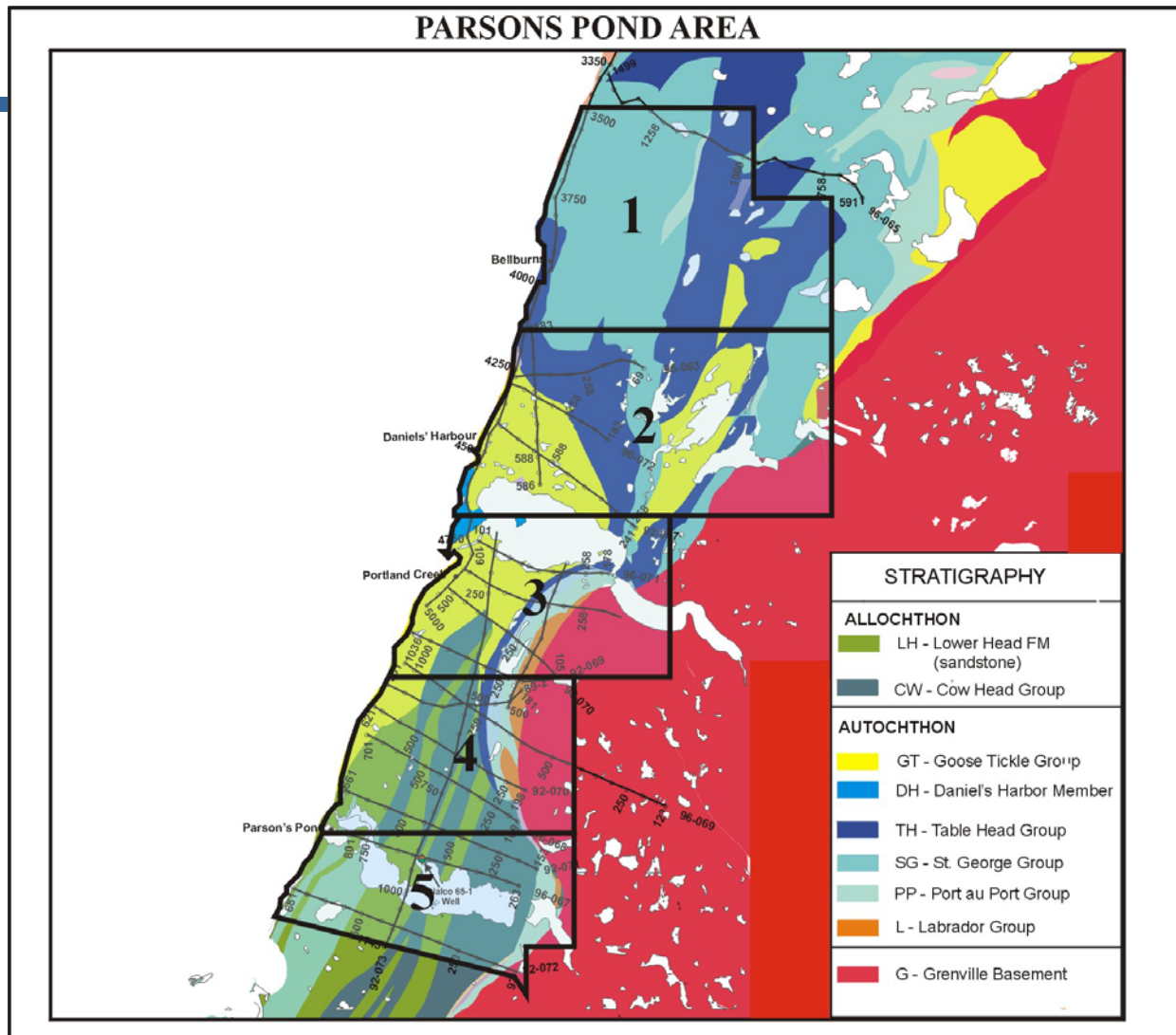


## PARSONS POND AREA







For illustrative purposes only. All Seismic Lines in this area are released.

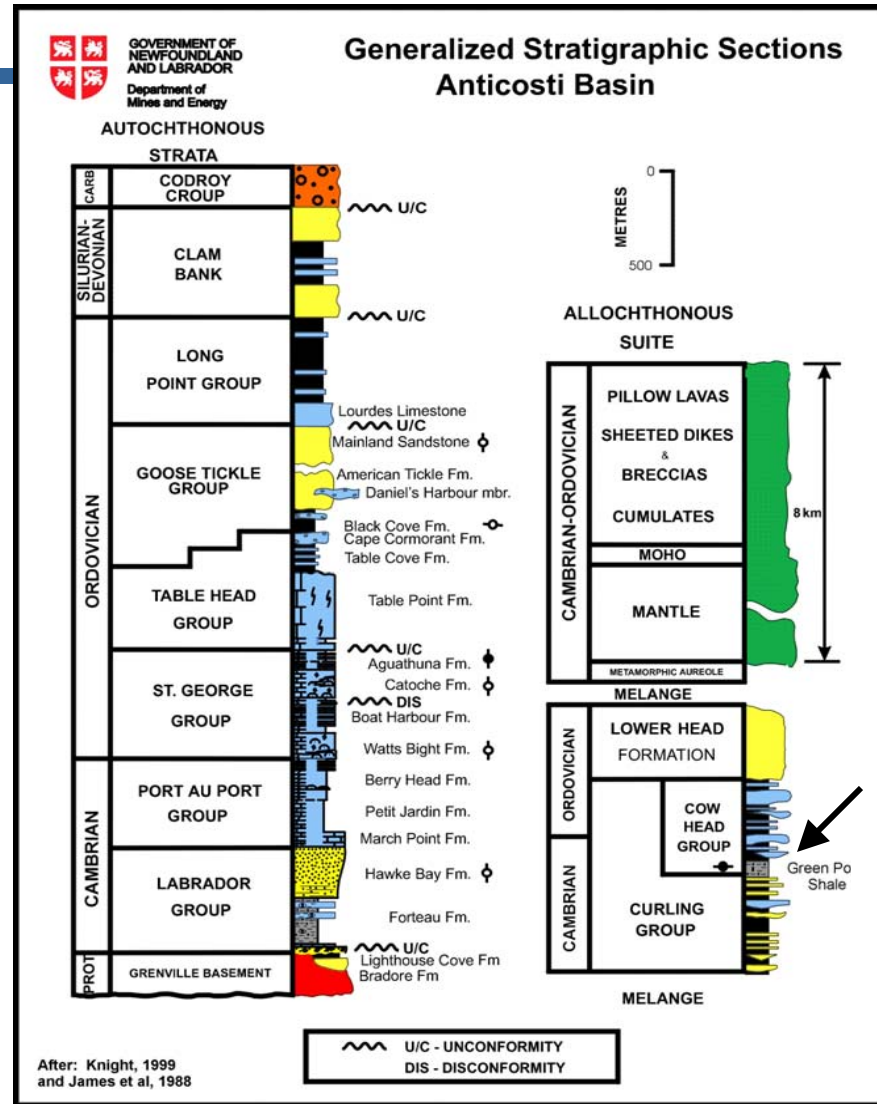
**Mines and Energy**

Government of Newfoundland  
& Labrador

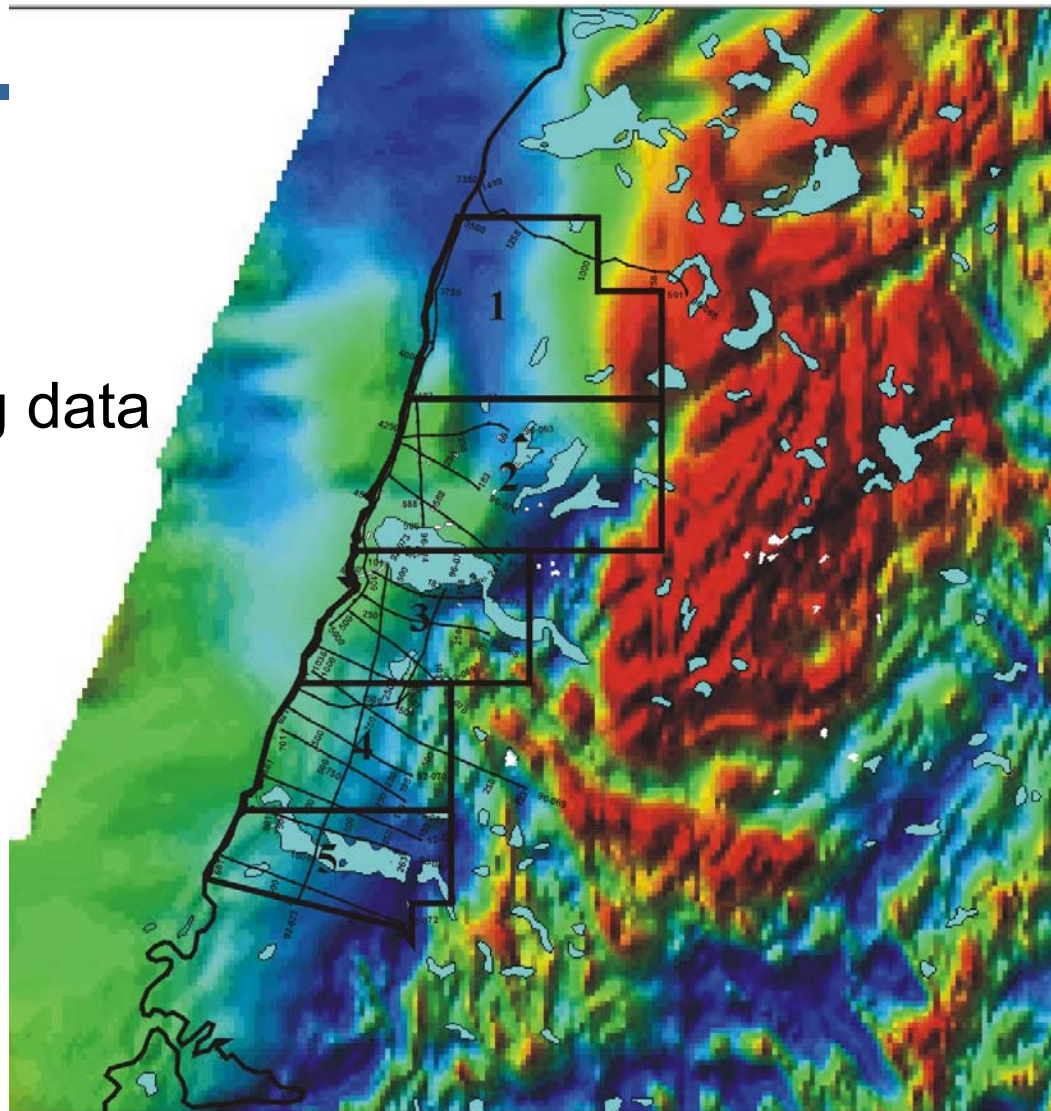


# Cambro-Ordovician Strat Chart

-  Possible Reservoir
-  Proven Reservoir
-  Possible Source rock
-  Proven source rock



Mag data



*Mines and Energy*

Government of *Newfoundland  
& Labrador*





