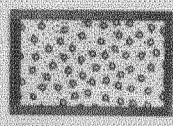
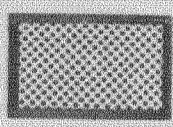
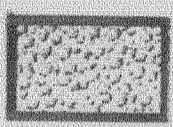
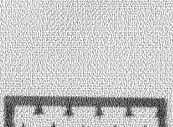



COMMUNITY  
of  
CARTWRIGHT

FUTURE LAND USE  
1995 - 2005  
MAP 1

LEGEND

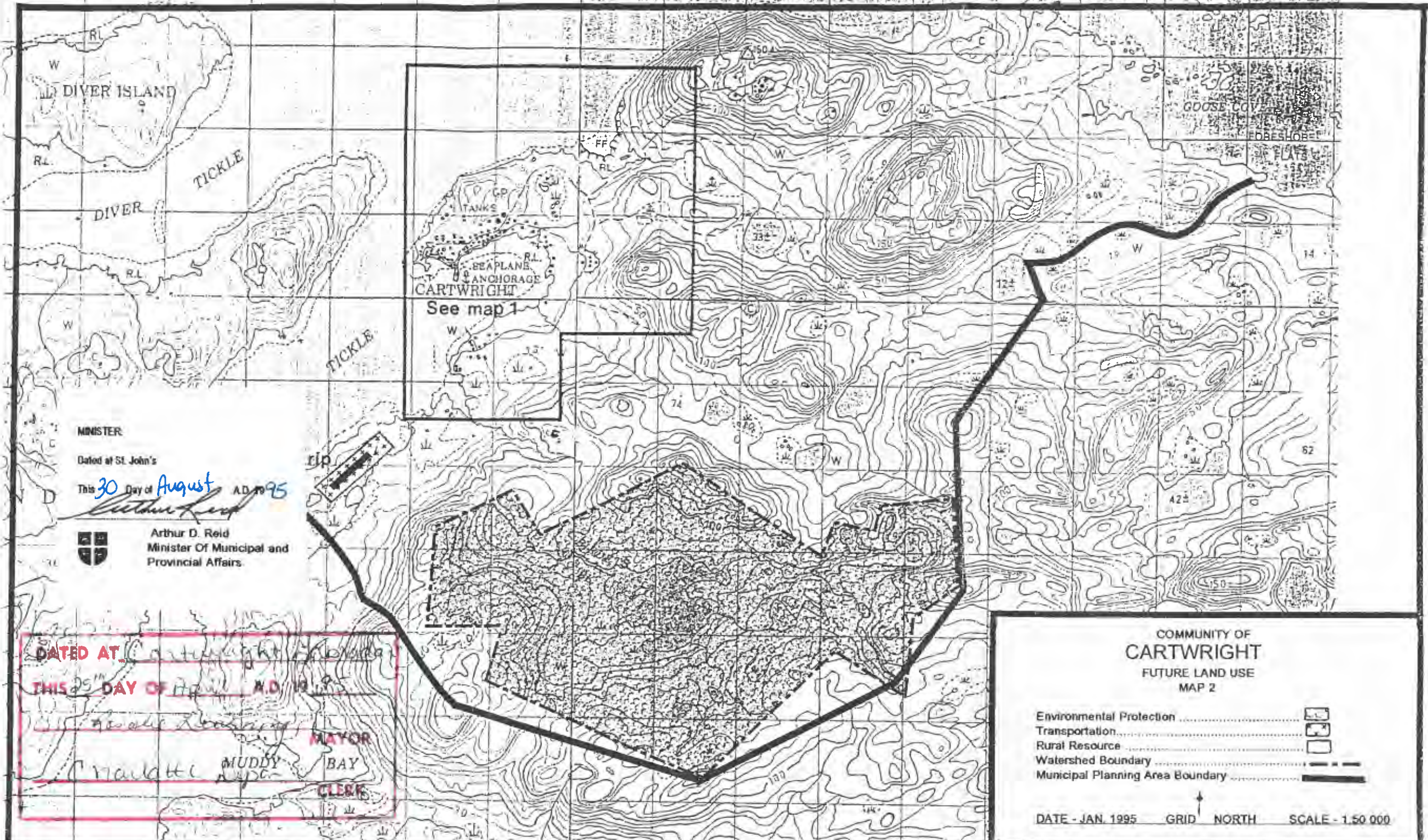
-  Mixed Development
-  Residential
-  Environmental Protection
-  Recreation
-  Rural



MINISTER  
Dated at St. John's  
This 30th Day of August A.D. 1995  
*Arthur D. Reid*  
Arthur D. Reid  
Minister of Municipal and  
Provincial Affairs

DATED AT Cartwright  
THIS 25 DAY OF April A.D. 1995  
*Charlotte Super* MAYOR  
*Charlotte Super* CLERK





DIVER ISLAND

TICKLE

CARTWRIGHT

See map 1

GOOSE COVE

FOBESHOE

FLATS

MINISTER

Dated at St. John's

This 30<sup>th</sup> Day of August A.D. 1995

*Arthur Reid*



Arthur D. Reid  
Minister Of Municipal and  
Provincial Affairs.

DATED AT Cartwright

THIS 25<sup>th</sup> DAY OF April A.D. 1995

MAYOR

BAY

CLERK

COMMUNITY OF  
CARTWRIGHT  
FUTURE LAND USE  
MAP 2

- Environmental Protection .....
- Transportation .....
- Rural Resource .....
- Watershed Boundary .....
- Municipal Planning Area Boundary .....

DATE - JAN. 1995    GRID    NORTH    SCALE - 1:50 000