

SEP 29 2017

COR/2017/03722

Ms. Colleen Humphries, MCIP
Supervisor or Planning Services
City of Corner Brook
P.O. Box 1080
Corner Brook, NL A2H 6E1

Dear Ms. Humphries:

CORNER BROOK
Development Regulations Amendment No. DR17-05

I am pleased to inform you that the **City of Corner Brook Development Regulations Amendment No. DR17-05**, as adopted by Council on the **21st day of August, 2017** has now been registered.

Council must publish a notice in the **Newfoundland and Labrador Gazette** within 10 days of this letter. The Amendment comes into effect on the date that this notice appears in the Gazette. The notice must also appear in a local newspaper.

The Newfoundland and Labrador Gazette is published every Friday. **Notices must be submitted a week in advance.** Council can submit the notice by email queensprinter@gov.nl.ca), by fax (729-1900) or by mail (Queen's Printer, P.O. Box 8700, St. John's, and NL, A1B 4J6.

Council's registered copy of the Amendment is enclosed. As it is a legal document, it should be reserved in a safe place.

Yours truly,



EDDIE JOYCE, MHA
District of Humber-Bay of Islands
Minister

Encls.

**CITY OF CORNER BROOK
2012 DEVELOPMENT REGULATIONS**

**RESOLUTION TO ADOPT
AMENDMENT DR17-05
AUGUST, 2017**

URBAN AND RURAL PLANNING ACT
RESOLUTION TO ADOPT

CITY OF CORNER BROOK
DEVELOPMENT REGULATIONS AMENDMENT DR17-05

Under the authority of Section 16 of the Urban and Rural Planning Act 2000, the City of Corner Brook adopts the Corner Brook Development Regulations Amendment DR17-05.

Adopted by the City Council of Corner Brook on the 21st day of August, 2017.

Signed and sealed this 24 day of August, 2017.

Mayor:

[Signature]

City Clerk:

[Signature]

(Council Seal)

CANADIAN INSTITUTE OF PLANNERS CERTIFICATION

I certify that the attached Development Regulations Amendment DR17-05 has been prepared in accordance with the requirements of the Urban and Rural Planning Act, 2000.

MCIP:

[Signature]

(MCIP Seal)

Development Regulations/Amendment
REGISTERED
Number 1200-2017-051
Date Sept 27/17
Signature Eddie Jaye

CITY OF CORNER BROOK

DEVELOPMENT REGULATIONS AMENDMENT DR17-05

BACKGROUND:

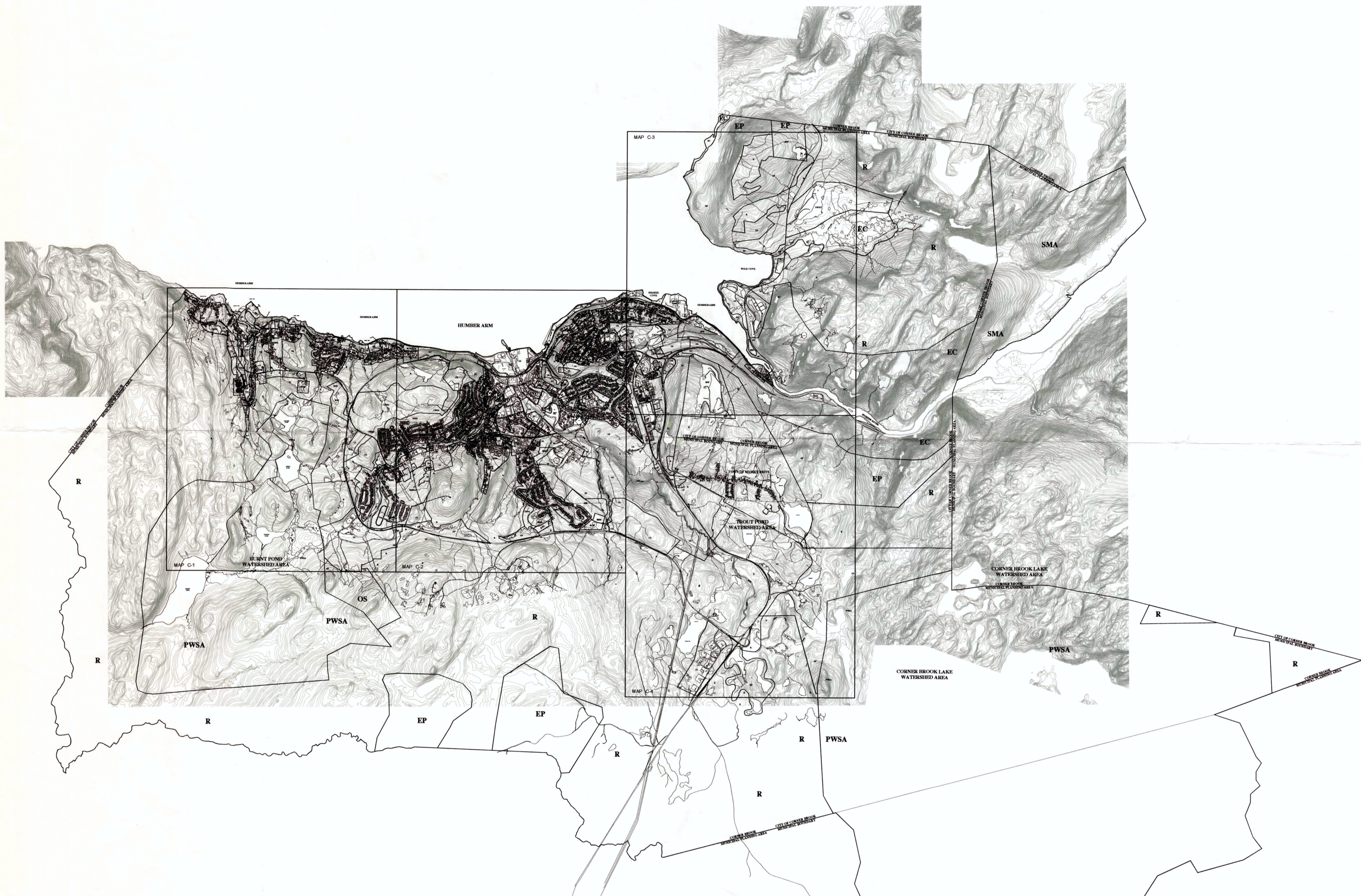
Development Regulations Land Use Zoning Map C-5 is required in order to identify the land use zoning of land beyond the more developed areas of the City of Corner Brook (currently identified on Maps C-1, C-2, C-3 and C-4) and to correspond with the land use designations identified on the Integrated Municipal Sustainability Map A and Map B. Currently only Land Use Designation Maps A and B exist for these areas. Zoning amendments for these outlying areas may also then be identified and processed.

PUBLIC CONSULTATION:

During the preparation of this amendment, Council advertised the proposed amendment in the Western Star newspaper on May 27 and June 3, 2017 which advised of Council's intention to seek the said amendment to its Development Regulations. In addition to this, the proposed amendment was posted on the City's website and was available for viewing at City Hall. There were no responses in relation to the public notice.

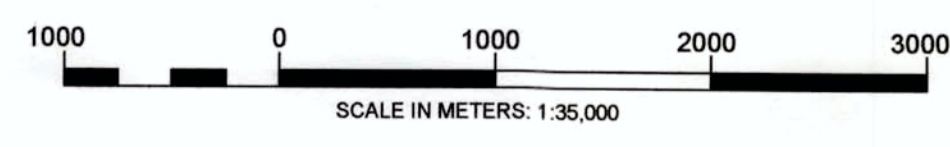
AMENDMENT:

The 2012 Development Regulations are hereby amended by creating the a new Land Use Zoning Map C-5, which will form part of the land use zoning maps for the 2102 Development Regulations, as per the attached copy of Map C-5.



LEGEND

ZONE TITLE	
Residential Special Density	RSD
Residential Low Density	RLD
Residential Medium Density	RMD
Residential High Density	RHD
Mobile/Mini Home Residential	MHR
Mosaic Residential	MR
Comprehensive Residential Development Area	CRDA
Townsite Residential	TR
Townsite Commercial	TC
Downtown Residential	DTR
Downtown Commercial	DTC
Downtown Smithville	DTS
General Commercial	GC
Residential/Commercial Mix	RCM
Highway and Tourist Commercial	HTC
Shopping Centre	SC
Large Scale Commercial	LSC
Waterfront Mixed Use	WMU
General Industrial	GI
Light Industrial	LI
Hazardous Industrial	HI
Innovation District	ID
Community Service	CS
Open Space	OS
Cemetery	C
Environmental Protection	EP
Environmental Conservation	EC
Protected Water Supply Area	PWSA
Rural	R
Solid Waste/Scrap Yard	SWSY
Mineral Working	MW
Special Management Area	SMA



THIS MAP IS A GRAPHICAL REPRESENTATION OF THE CITY OF CORNER BROOK SHOWING THE APPROXIMATE LOCATION OF ROADS, BUILDINGS AND OTHER ELEMENTS. THIS MAP IS NOT A LAND SURVEY AND IS NOT INTENDED TO BE USED FOR LEGAL DESCRIPTIONS.

REGISTRATION APPROVAL

Development Regulations/Amendment
REGISTERED
 Number: 1200-2017-051
 Date: Sept 27/17
 Signature: [Handwritten Signature]

NO.	REVISIONS	DATE	BY
4		DD MM YY	X.X
3		DD MM YY	X.X
2		DD MM YY	X.X
1	Drafted LUZ MAP_CS	26.05.17	D.R.
0	DESCRIPTION	DATE	BY

GAZETTED DATE: _____

City of Corner Brook
 COMMUNITY SERVICES DEPARTMENT
 PLANNING DIVISION

CITY OF CORNER BROOK

PROJECT TITLE:
INTEGRATED MUNICIPAL SUSTAINABILITY PLAN 2012

DRAWING TITLE:
LAND USE ZONING MAP C-5

Zone Title	Zone Symbol	Zone Title	Zone Symbol	Zone Title	Zone Symbol
Residential Special Density	RSD	Downtown Commercial	DTC	Community Service	CS
Residential Low Density	RLD	Downtown Smithville	DTS	Innovation District	ID
Residential Medium Density	RMD	General Commercial	GC	Open Space	OS
Residential High Density	RHD	Residential/Commercial Mix	RCM	Cemetery	C
Mobile/Mini Home Residential	MHR	Highway and Tourist Commercial	HTC	Environmental Protection	EP
Mosaic Residential	MR	Shopping Centre	SC	Environmental Conservation	EC
Comprehensive Residential Development Area	CRDA	Large Scale Commercial	LSC	Protected Water Supply Area	PWSA
Townsite Residential	TR	Waterfront Mixed Use	WMU	Rural	R
Townsite Commercial	TC	General Industrial	GI	Solid Waste/Scrap Yard	SWSY
Downtown Residential	DTR	Light Industrial	LI	Mineral Working	MW
		Hazardous Industrial	HI	Special Management Area	SMA

ZONING BOUNDARY: _____

CAUTION: INSTITUTE OF PLANNERS CERTIFICATION
 I hereby certify that this City of Corner Brook Integrated Municipal Sustainability Plan 2012, Map C-5, has been prepared in accordance with the requirements of the Urban and Rural Planning Act.
 NAME: [Handwritten Name]
 DATE: Aug 24, 2017
 SEAL AND SIGNATURE: [Handwritten Signature and Seal]

Seal and Signature: [Handwritten Signature and Seal]

Seal and Signature: [Handwritten Signature and Seal]