

URBAN AND RURAL PLANNING ACT
RESOLUTION TO APPROVE

CITY OF CORNER BROOK
MUNICIPAL PLAN AMENDMENT MP15-02

200-5102-002
MAY 31 2015
CITY OF CORNER BROOK

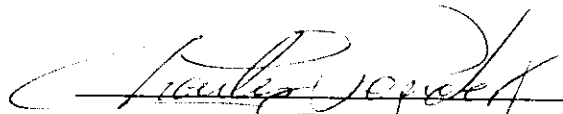
Under the authority of Section 16, Section 17 and Section 18 of the *Urban and Rural Planning Act 2000*, the City Council of Corner Brook

- a) adopted the Municipal Plan Amendment MP15-02 on the 11th day of May, 2015.
- b) gave notice of the adoption of the Municipal Plan Amendment MP15-02 by advertisement inserted on the 30th day of May, 2015 and the 6th day of June, 2015 in the Western Star newspaper and on the City's website.
- c) set the 23rd day of June, 2015 at 7:00 p.m. at City Hall, Corner Brook for the holding of a Public Hearing to consider objections and submissions.

Now under Section 23 of the *Urban and Rural Planning Act 2000*, the City Council of Corner Brook approved the Municipal Plan Amendment MP15-02 on the 14th day of September, 2015, with a change, as per the attached copies of Map A and Map B.

SIGNED AND SEALED this 9th day of October, 2015.

Mayor:

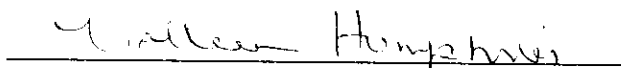


(Council Seal)

Clerk:



I hereby certify that this Municipal Plan Amendment MP15-02 has been prepared in accordance with the requirements of the Urban and Rural Planning Act.



Colleen Humphries, M.C.I.P.

(seal)

URBAN AND RURAL PLANNING ACT
RESOLUTION TO ADOPT

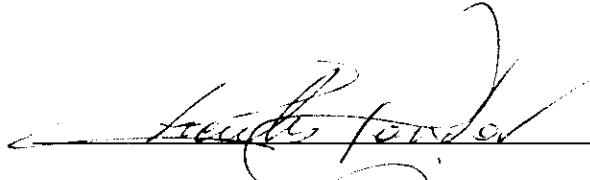
CITY OF CORNER BROOK
INTEGRATED MUNICIPAL SUSTAINABILITY PLAN 2012
AMENDMENT MP15-02

Under the authority of Section 16 of the Urban and Rural Planning Act 2000, the City of Corner Brook adopts the Corner Brook Integrated Municipal Sustainability Plan Amendment MP15-02.

Adopted by the City Council of Corner Brook on the 11th day of May, 2015.

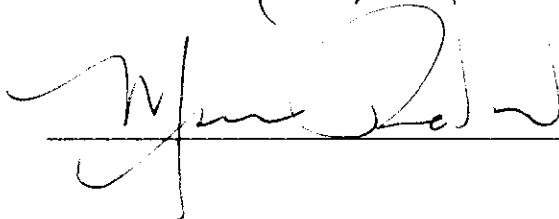
Signed and sealed this 9th day of October, 2015.

Mayor:



(Council Seal)

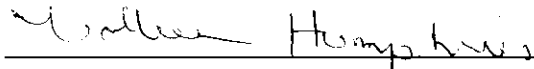
City Clerk:



CANADIAN INSTITUTE OF PLANNERS CERTIFICATION

I certify that the attached Integrated Municipal Sustainability Plan Amendment MP15-02 has been prepared in accordance with the requirements of the Urban and Rural Planning Act, 2000.

MCIP:



(MCIP Seal)

CITY OF CORNER BROOK

INTEGRATED MUNICIPAL SUSTAINABILITY PLAN AMENDMENT MP15-02

BACKGROUND:

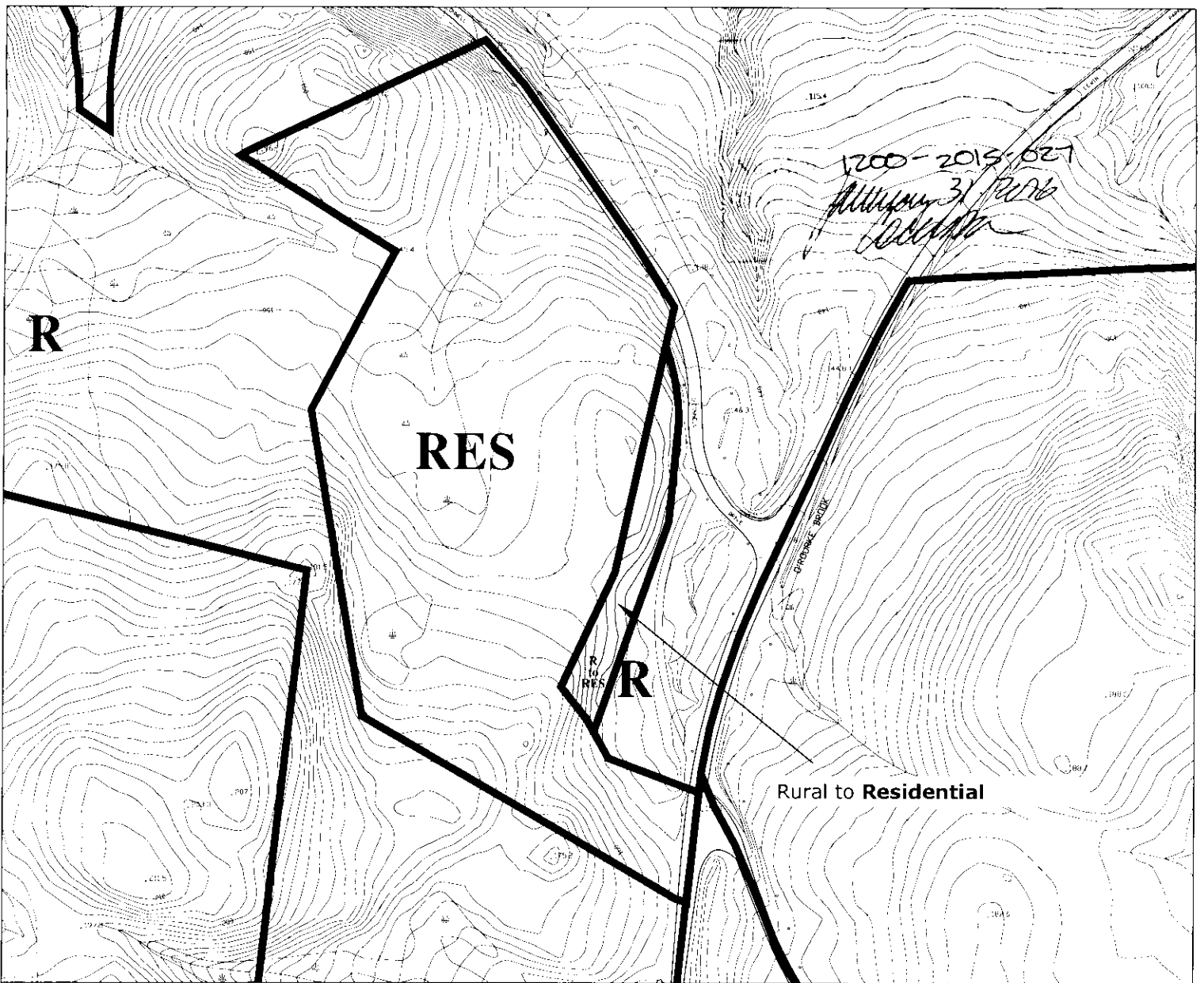
Municipal Plan Amendment MP15-02 is required in order to change the land use designation of an area of land off Lewin Parkway, a portion of the Parkway Heights Subdivision, from Rural to Residential in order to accommodate changes to several rear lot boundaries as a result of a realignment of a road within the subdivision.

PUBLIC CONSULTATION:

During the preparation of this amendment, Council advertised the proposed amendment in the Western Star newspaper on February 21 and February 28, 2015 which advised of Council's intention to seek the said amendment to its Municipal Plan. In addition to this, the proposed amendment was posted on the City's website and was available for viewing at City Hall. There were no submissions in relation to the public notification of the proposed amendment.

AMENDMENT:

The Integrated Municipal Sustainability Plan 2012 Land Use Map A and Map B are hereby amended by changing the land use designation of the subject area off Lewin Parkway from the Rural land use designation to the Residential land use designation, as per the attached copies of the maps.



LEGEND

Land Use Designations

Residential	RES
Comprehensive Residential Development Area	CRDA
Townsite Heritage Conservation District	THCD
Downtown	DT
General Commercial	GC
Residential/Commercial Mix	RCM
Highway and Tourist Commercial	HTC
Shopping Centre	SC

Land Use Designation

Large Scale Commercial	LSC
Waterfront Mixed Use	WMU
General Industrial	GI
Light Industrial	LI
Hazardous Industrial	HI
Community Service	CS
Innovation District	ID
Open Space	DS

Land Use Designation

Cemetery	C
Environmental Protection	EP
Environmental Conservation	EC
Protected Water Supply Area	PWSA
Rural	R
Solid Waste/Scrap Yard	SW/SY
Mineral Working	MW
Special Management Area	SMA

DESIGNATION BOUNDARY

CITY OF CORNER BROOK

PROJECT TITLE:

INTEGRATED MUNICIPAL SUSTAINABILITY PLAN 2012

DRAWING TITLE:

GENERALIZED FUTURE LAND USE MAP A (AMENDMENT MP15-02)



City of Corner Brook
Community Services Department
Planning Division

DATE: SEPTEMBER 2015

SCALE: 1:5000



DESCRIPTION

LAND USE DESIGNATION CHANGE FROM RURAL TO RESIDENTIAL.

CANADIAN INSTITUTE OF PLANNERS CERTIFICATION

I hereby certify that this City of Corner Brook Integrated Municipal Sustainability Plan 2012, Map A has been prepared in accordance with the requirements of the Urban and Rural Planning Act.

M.C.I.P. Colleen Humphries

DATE Oct 7, 2015

(M.C.I.P. SEAL)

SEAL AND SIGNATURE

Certified that this City of Corner Brook Integrated Municipal Sustainability Plan 2012, Map A is a correct copy of the Integrated Municipal Sustainability Plan 2012, Map A approved by the Council of the City of Corner Brook on the 14th day of Sept., 2015 (month) (year)

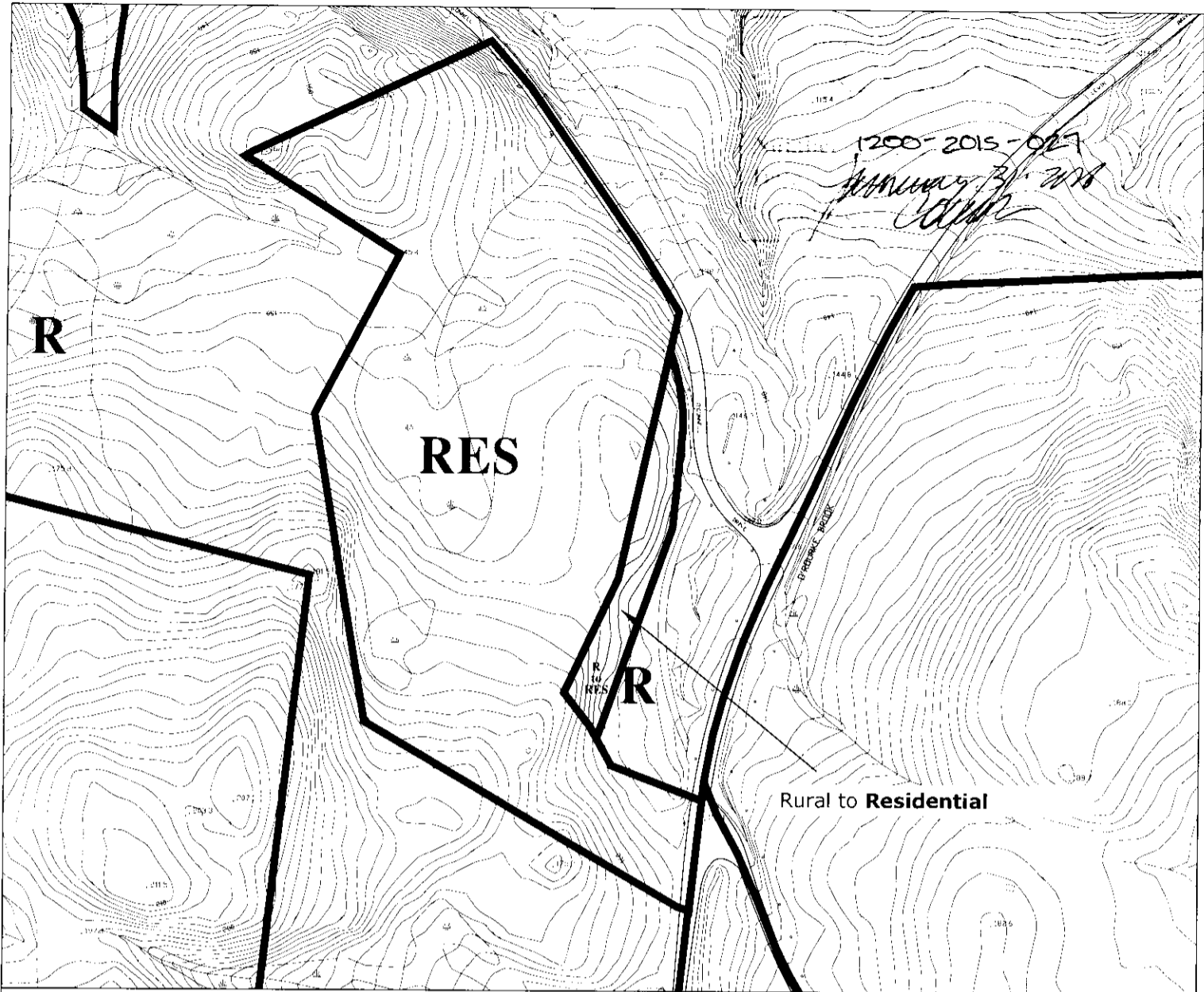
MAYOR [Signature]

CLERK [Signature]

DATE Oct 9/15

(COUNCIL SEAL)

THIS MAP IS A GRAPHICAL REPRESENTATION OF THE CITY OF CORNER BROOK SHOWING THE APPROXIMATE LOCATION OF ROADS, BUILDINGS AND OTHER ELEMENTS. THIS MAP IS NOT A LAND SURVEY AND IS NOT INTENDED TO BE USED FOR LEGAL DESCRIPTIONS.



LEGEND

Land Use Designations

Residential	<input type="checkbox"/> RES
Comprehensive Residential Development Area	<input type="checkbox"/> CRDA
Townsite Heritage Conservation District	<input type="checkbox"/> THCD
Downtown	<input type="checkbox"/> DT
General Commercial	<input type="checkbox"/> GC
Residential/Commercial Mix	<input type="checkbox"/> RCM
Highway and Tourist Commercial	<input type="checkbox"/> HTC
Shopping Centre	<input type="checkbox"/> SC

Land Use Designation

Large Scale Commercial	<input type="checkbox"/> LSC
Waterfront Mixed Use	<input type="checkbox"/> WMU
General Industrial	<input type="checkbox"/> GI
Light Industrial	<input type="checkbox"/> LI
Hazardous Industrial	<input type="checkbox"/> HI
Community Service	<input type="checkbox"/> CS
Innovation District	<input type="checkbox"/> ID
Open Space	<input type="checkbox"/> OS

Land Use Designation

Cemetery	<input type="checkbox"/> C
Environmental Protection	<input type="checkbox"/> EP
Environmental Conservation	<input type="checkbox"/> EC
Protected Water Supply Area	<input type="checkbox"/> PWSA
Rural	<input type="checkbox"/> R
Solid Waste/Scrap Yard	<input type="checkbox"/> SW/SY
Mineral Working	<input type="checkbox"/> MW
Special Management Area	<input type="checkbox"/> SMA

DESIGNATION BOUNDARY

CITY OF CORNER BROOK

PROJECT TITLE:

INTEGRATED MUNICIPAL SUSTAINABILITY PLAN 2012

DRAWING TITLE:

GENERALIZED FUTURE LAND USE MAP B (AMENDMENT MP15-02)



City of Corner Brook
Community Services Department
Planning Division

DATE: SEPTEMBER 2015

SCALE: 1:5000



DESCRIPTION

LAND USE DESIGNATION CHANGE FROM RURAL TO RESIDENTIAL

CANADIAN INSTITUTE OF PLANNERS CERTIFICATION

I hereby certify that this City of Corner Brook Integrated Municipal Sustainability Plan 2012, Map B has been prepared in accordance with the requirements of the Urban and Rural Planning Act.

M.C.I.P. Walter Humphries

DATE Oct 9, 2015

(M.C.I.P. SEAL)

SEAL AND SIGNATURE

Certified that this City of Corner Brook Integrated Municipal Sustainability Plan 2012, Map B is a correct copy of the Integrated Municipal Sustainability Plan 2012, Map B approved by the Council of the City of Corner Brook on the 14th day of Sept, 2015 (month) (year)

MAYDR

CLERK

DATE

Oct. 9/15

(COUNCIL SEAL)

THIS MAP IS A GRAPHICAL REPRESENTATION OF THE CITY OF CORNER BROOK SHOWING THE APPROXIMATE LOCATION OF ROADS, BUILDINGS AND OTHER ELEMENTS. THIS MAP IS NOT A LAND SURVEY AND IS NOT INTENDED TO BE USED FOR LEGAL DESCRIPTIONS.