

**CITY OF CORNER BROOK
INTEGRATED MUNICIPAL SUSTAINABILITY PLAN 2012**

**RESOLUTION TO APPROVE
MUNICIPAL PLAN AMENDMENT MP17-04**

AUGUST, 2017

URBAN AND RURAL PLANNING ACT
RESOLUTION TO APPROVE

CITY OF CORNER BROOK
MUNICIPAL PLAN AMENDMENT MP17-04

Under the authority of Section 16, Section 17 and Section 18 of the *Urban and Rural Planning Act 2000*, the City Council of Corner Brook

- a) adopted the Municipal Plan Amendment MP17-04 on the 17th day of June, 2017.
- b) gave notice of the adoption of the Municipal Plan Amendment MP17-04 by advertisement inserted on the 5th day of July, 2017 and the 15th day of July, 2017 in the Western Star newspaper and on the City's website.
- c) set the 3rd day of August, 2017 at 7:00 p.m. at City Hall, Corner Brook for the holding of a Public Hearing to consider objections and submissions.

Now under Section 23 of the *Urban and Rural Planning Act 2000*, the City Council of Corner Brook approved the Municipal Plan Amendment MP17-04 on the 2nd day of August, 2017, as adopted.

SIGNED AND SEALED this 3rd day of August, 2017.

Mayor: [Signature]

(Council Seal)

Clerk: [Signature]

I hereby certify that this Municipal Plan Amendment MP17-04 has been prepared in accordance with the requirements of the Urban and Rural Planning Act.

[Signature]

Colleen Humphries, M.C.I.P.

1200-2017-038 (seal)

Sept 8/17
Eddie Joyce

CITY OF CORNER BROOK
INTEGRATED MUNICIPAL SUSTAINABILITY PLAN 2012

RESOLUTION TO ADOPT
AMENDMENT MP17-04

May, 2017

**URBAN AND RURAL PLANNING ACT
RESOLUTION TO ADOPT**

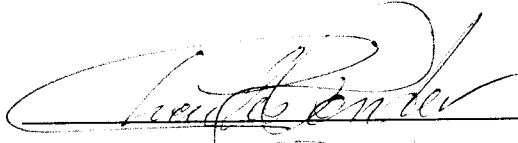
**CITY OF CORNER BROOK
INTEGRATED MUNICIPAL SUSTAINABILITY PLAN 2012
AMENDMENT MP17-04**

Under the authority of Section 16 of the Urban and Rural Planning Act 2000, the City of Corner Brook adopts the Corner Brook Integrated Municipal Sustainability Plan Amendment MP17-04.

Adopted by the City Council of Corner Brook on the 14th day of August, 2017.


Signed and sealed this 14th day of August, 2017.

Mayor:



(Council Seal)

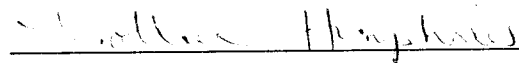
City Clerk:



CANADIAN INSTITUTE OF PLANNERS CERTIFICATION

I certify that the attached Integrated Municipal Sustainability Plan Amendment MP17-04 has been prepared in accordance with the requirements of the Urban and Rural Planning Act, 2000.

MCIP:



(MCIP Seal)

CITY OF CORNER BROOK

INTEGRATED MUNICIPAL SUSTAINABILITY PLAN AMENDMENT MP17-04

BACKGROUND:

Municipal Plan Amendment MP17-04 is required in order to change the land use designation of a portion of the lot at 47 Clarence Street from Community Service to Residential in order to consolidate the property under a single land use designation, Residential.

PUBLIC CONSULTATION:

During the preparation of this amendment, Council advertised the proposed amendment in the Western Star newspaper on April 15 and April 22, 2017 which advised of Council's intention to seek the said amendment to its Municipal Plan. In addition to this, the proposed amendment was posted on the City's website and was available for viewing at City Hall.

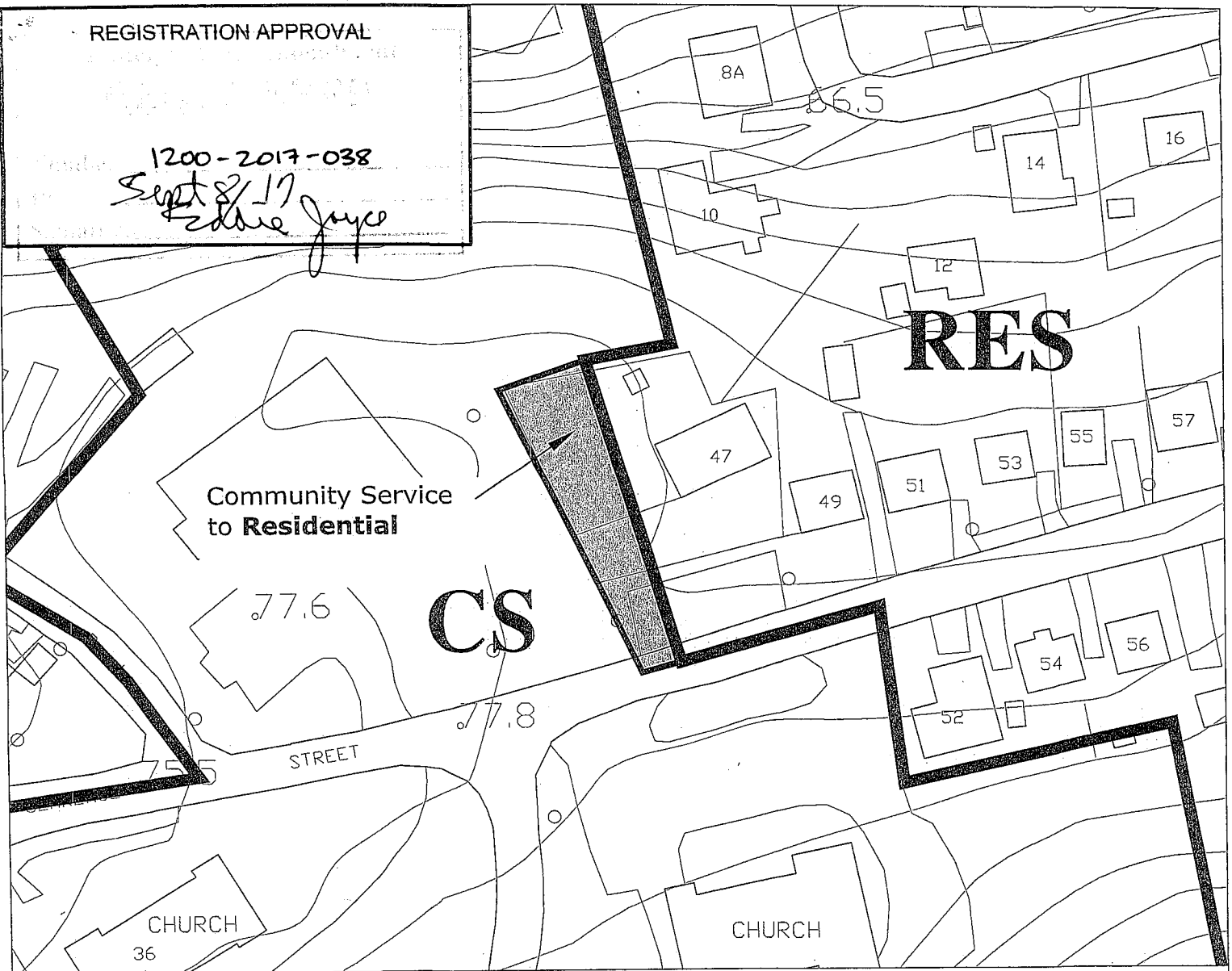
A neighbourhood consultation process was carried out and thirty-three (33) residents/property owners within approximately 115 metres of the subject site were provided with an information package which included a letter of explanation/response form, the Use Zone Tables of the Community Service and Residential Medium Density Use Zone Tables and a map identifying the existing and proposed zoning of the affected area. In response to the public notification and neighbourhood consultation, seven (7) response forms were returned within the specified time period. As well, one resident visited the Planning Office to seek additional information and discuss the matter further. All respondents support the proposed amendments.

AMENDMENT:

The Integrated Municipal Sustainability Plan 2012 Map A and Map B are hereby amended by changing the land use designation of the affected area at 47 Clarence Street from Community Service to Residential, as per the attached copy of the map.

REGISTRATION APPROVAL

1200-2017-038
 Sept 8/17
 Eddie Joyce



LEGEND

DESIGNATION BOUNDARY

Land Use Designations

Residential	<input type="checkbox"/> RES
Comprehensive Residential Development Area	<input type="checkbox"/> CRDA
Townsite Heritage Conservation District	<input type="checkbox"/> THCD
Downtown	<input type="checkbox"/> DT
General Commercial	<input type="checkbox"/> GC
Residential/Commercial Mix	<input type="checkbox"/> RCM
Highway and Tourist Commercial	<input type="checkbox"/> HTC
Shopping Centre	<input type="checkbox"/> SC

Land Use Designation

Large Scale Commercial	<input type="checkbox"/> LSC
Waterfront Mixed Use	<input type="checkbox"/> WMU
General Industrial	<input type="checkbox"/> GI
Light Industrial	<input type="checkbox"/> LI
Hazardous Industrial	<input type="checkbox"/> HI
Community Service	<input type="checkbox"/> CS
Innovation District	<input type="checkbox"/> ID
Open Space	<input type="checkbox"/> OS

Land Use Designation

Cemetery	<input type="checkbox"/> C
Environmental Protection	<input type="checkbox"/> EP
Environmental Conservation	<input type="checkbox"/> EC
Protected Water Supply Area	<input type="checkbox"/> PWSA
Rural	<input type="checkbox"/> R
Solid Waste/Scrap Yard	<input type="checkbox"/> SW/SY
Mineral Working	<input type="checkbox"/> MW
Special Management Area	<input type="checkbox"/> SMA

CITY OF CORNER BROOK

PROJECT TITLE:

INTEGRATED MUNICIPAL SUSTAINABILITY PLAN 2012

DRAWING TITLE:

GENERALIZED FUTURE LAND USE MAP A (AMENDMENT MP17-04)

CANADIAN INSTITUTE OF PLANNERS CERTIFICATION

I hereby certify that this City of Corner Brook Integrated Municipal Sustainability Plan 2012, Map 11 has been prepared in accordance with the requirements of the Urban and Rural Planning Act.

M.C.I.P.

DATE

[Signature]
 May 29, 2017

(M.C.I.P. SEAL)

SEAL AND SIGNATURE

Certified that this City of Corner Brook Integrated Municipal Sustainability Plan 2012, Map 11 is a correct copy of the Integrated Municipal Sustainability Plan 2012, Map 11 approved by the Council of the City of Corner Brook on the 21 day of May, 2017 (month) (year)

MAYOR

CLERK

DATE

[Signature]
[Signature]
 May 29, 2017

(COUNCIL SEAL)

City of Corner Brook
 Community Services Department
 Planning Division

DATE: MAY 2017

SCALE: 1:1000



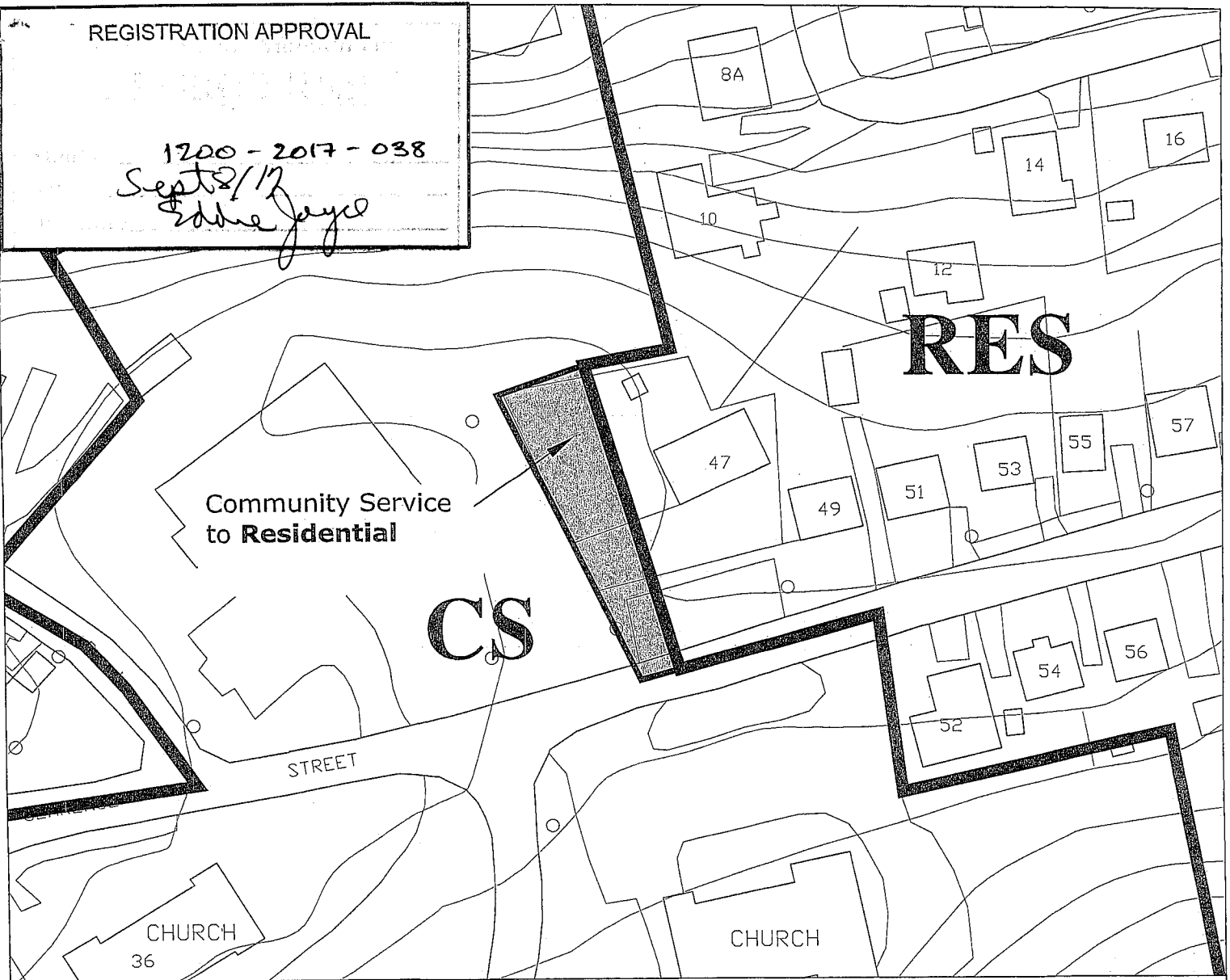
DESCRIPTION

LAND USE DESIGNATION CHANGE FROM COMMUNITY SERVICE TO RESIDENTIAL

THIS MAP IS A GRAPHICAL REPRESENTATION OF THE CITY OF CORNER BROOK SHOWING THE APPROXIMATE LOCATION OF ROADS, BUILDINGS AND OTHER ELEMENTS. THIS MAP IS NOT A LAND SURVEY AND IS NOT INTENDED TO BE USED FOR LEGAL DESCRIPTIONS.

REGISTRATION APPROVAL

1200-2017-038
 Sept 2/17
 Eddie Joyce



LEGEND

DESIGNATION BOUNDARY

Land Use Designations

Residential	RES
Comprehensive Residential Development Area	CRDA
Townsite Heritage Conservation District	THCD
Downtown	DT
General Commercial	GC
Residential/Commercial Mix	RCM
Highway and Tourist Commercial	HTC
Shopping Centre	SC

Land Use Designation

Large Scale Commercial	LSC
Waterfront Mixed Use	WMU
General Industrial	GI
Light Industrial	LI
Hazardous Industrial	HI
Community Service	CS
Innovation District	ID
Open Space	OS

Land Use Designation

Cemetery	C
Environmental Protection	EP
Environmental Conservation	EC
Protected Water Supply Area	PWSA
Rural	R
Solid Waste/Scrap Yard	SWSY
Mineral Working	MW
Special Management Area	SMA

CITY OF CORNER BROOK

CANADIAN INSTITUTE OF PLANNERS CERTIFICATION

PROJECT TITLE:

INTEGRATED MUNICIPAL SUSTAINABILITY PLAN 2012

I hereby certify that this City of Corner Brook Integrated Municipal Sustainability Plan 2012, Map B has been prepared in accordance with the requirements of the Urban and Rural Planning Act.

DRAWING TITLE:

GENERALIZED FUTURE LAND USE MAP B (AMENDMENT MP17-04)

M.C.I.P. William Henry
 DATE July 29, 2017 (M.C.I.P. SEAL)

SEAL AND SIGNATURE

Certified that this City of Corner Brook Integrated Municipal Sustainability Plan 2012, Map B is a correct copy of the Integrated Municipal Sustainability Plan 2012, Map B approved by the Council of the City of Corner Brook on the 11 day of July, 2017 (month) (year)



City of Corner Brook
 Community Services Department
 Planning Division

DATE: MAY 2017

SCALE: 1:1000



DESCRIPTION

LAND USE DESIGNATION CHANGE FROM COMMUNITY SERVICE TO RESIDENTIAL

MAYOR [Signature]

CLERK [Signature]

DATE July 29, 2017 (COUNCIL SEAL)

THIS MAP IS A GRAPHICAL REPRESENTATION OF THE CITY OF CORNER BROOK SHOWING THE APPROXIMATE LOCATION OF ROADS, BUILDINGS AND OTHER ELEMENTS. THIS MAP IS NOT A LAND SURVEY AND IS NOT INTENDED TO BE USED FOR LEGAL DESCRIPTIONS.