


CANADIAN INSTITUTE OF PLANNERS CERTIFICATION
 I certify that the attached Development Regulations has been prepared in accordance with the requirements of the Urban and Rural Planning Act
 MCP: 10200 Dennis Knight


Dated at Hopedale, Newfoundland
 This ____ day of ____, 2008.

Judy Clibber
 Mayor
Agnes Melita
 Town Clerk

TOWN OF HOPEDALE
 MUNICIPAL PLAN 2005 - 2015
 FUTURE LAND USE
MAP 1



FUTURE DEVELOPMENT AREA
RURAL
WASTE DISPOSAL SITE BUFFER AREA



SCALE 1 : 50000

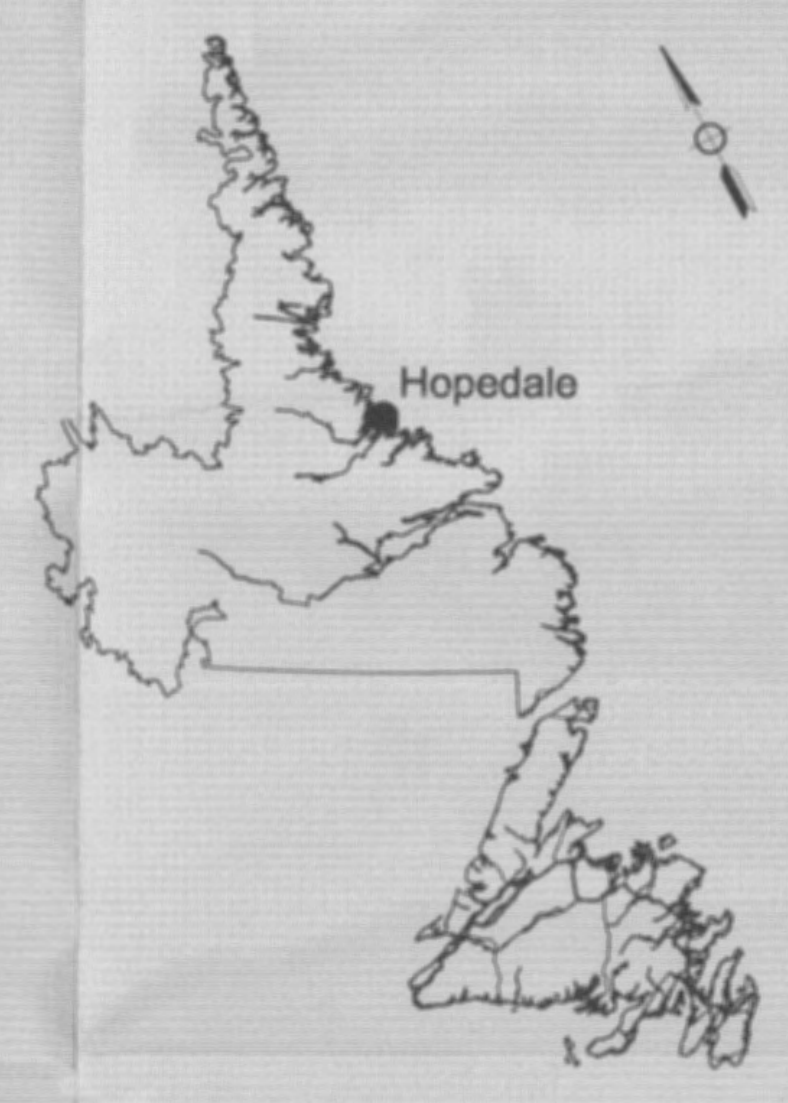
FUTURE LAND USE
MAP 2

LEGEND:

- RESIDENTIAL
- FUTURE DEVELOPMENT AREA
- TOWN CENTRE
- MIXED DEVELOPMENT
- HERITAGE PRESERVATION
- INDUSTRIAL / COMMERCIAL
- ENVIRONMENTAL PROTECTION
- RURAL

- Waste Disposal Site Buffer
- Planning Area Boundary

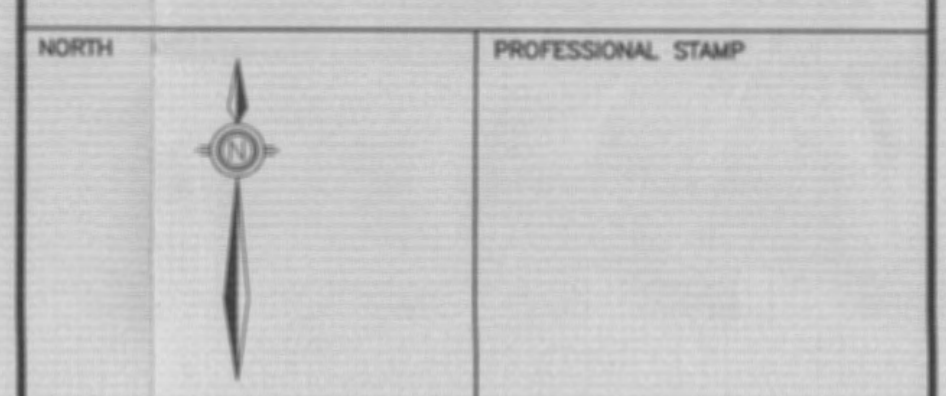
Date: 2007-12-17 Grid North Scale: 1:5000



CANADIAN INSTITUTE OF PLANNERS CERTIFICATION
 I certify that the attached Development Regulations have been prepared in accordance with the requirements of the Planning Act.
 MCI: Dennis Knight
 Dated at Hopedale, Newfoundland
 This 27 day of April, 2008
Dennis Knight
 Mayor
Gillian McIntosh
 Town Clerk

REVISIONS

No.	Date	Description	Drawn By	App'd By



PRIME CONSULTANT

d.w.knightassociates
 enlightened direction
 P.O. Box 23146, Rpo Churchill Square, (46 Bonaventure Ave.)
 St. John's, Newfoundland & Labrador, Canada A1B 4J9
 Tel: (709) 726-6466, Fax: (709) 726-1975, E-mail: dknight@dwnknightassociates.com

SUB-CONSULTANTS

domestic design services
 P.O. Box 298 Farm Road, Brigus,
 Newfoundland A0A 1K0
 Phone (709) 528-1101

DRAWING
MUNICIPAL PLAN 2005-2015

DRAWN BY E. ROBERTS/MURPHY	CHECKED BY	APPROVED BY
PROJECT NO. 3024	DWG. FILE NO.	FILE NO.
DATE DEC 17, 2007	SCALE 1:5000	DRAWING NO. M-2 OF 2 0