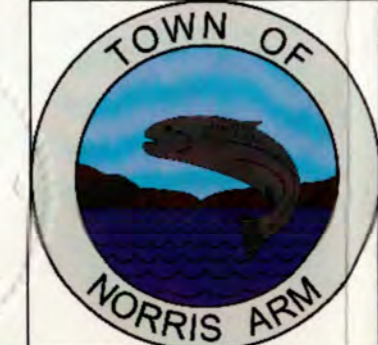


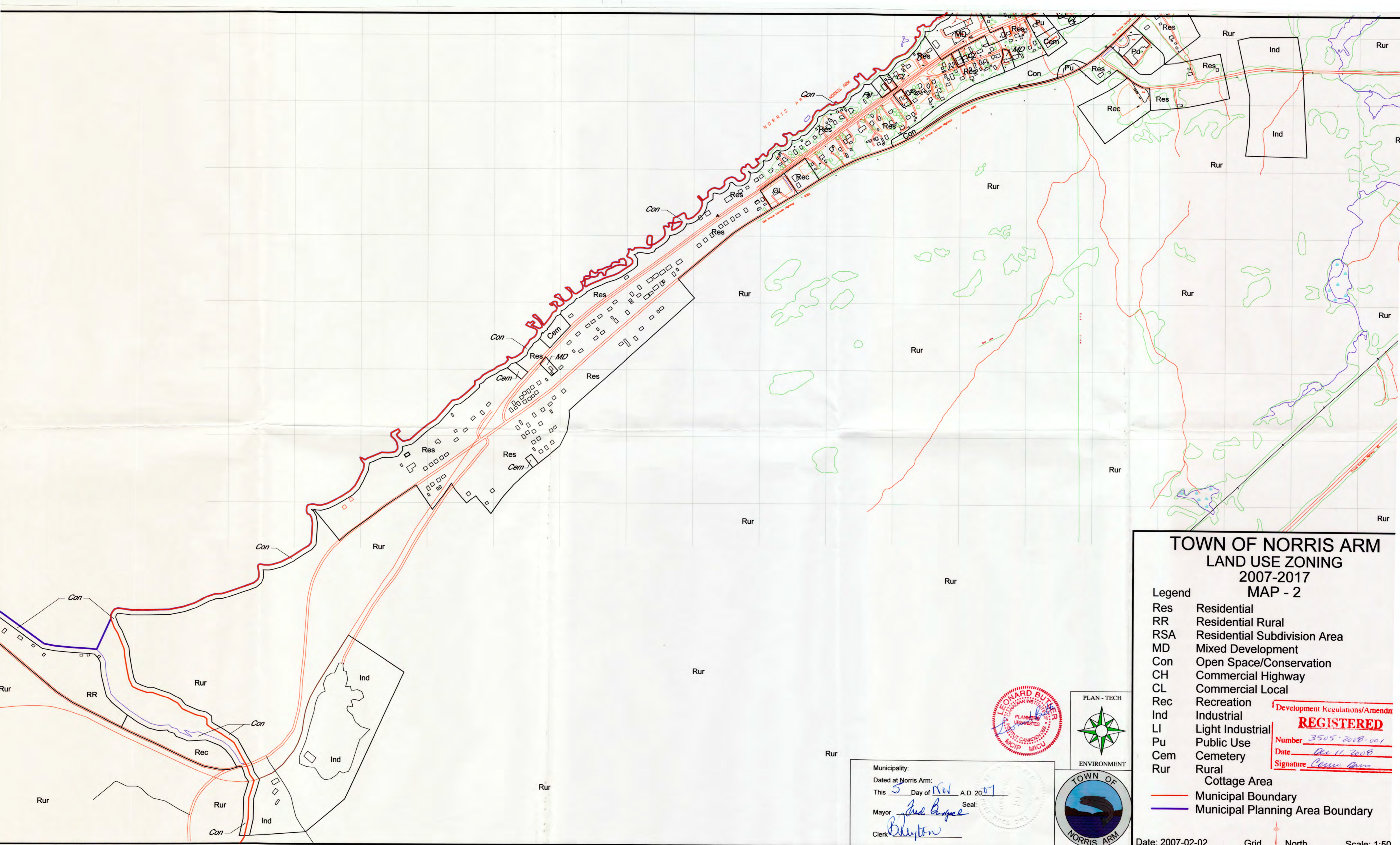
TOWN OF NORRIS ARM LAND USE ZONING 2007-2017 MAP - 1

Legend	
Res	Residential
RR	Residential Rural
RSA	Residential Subdivision Area
MD	Mixed Development
Con	Open Space/Conservation
CH	Commercial Highway
CL	Commercial Local
Rec	Recreation
Ind	Industrial
LI	Light Industrial
Pu	Public Use
Cem	Cemetery
Rur	Rural
	Cottage Area
—	Municipal Boundary
—	Municipal Planning Area Boundary

Development Regulations/Amendment
REGISTERED
 Number 3515-2008-001
 Date Dec 11 2018
 Signature [Signature]



Municipality:
 Dated at Norris Arm:
 This 5 Day of Nov A.D. 2017
 Mayor [Signature] Seal:
 Clerk [Signature]

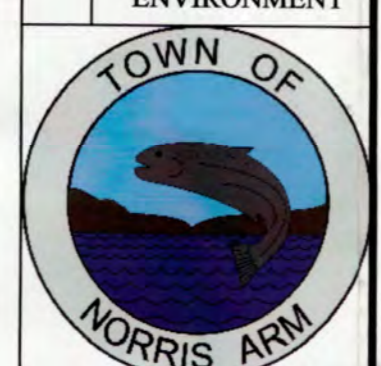


**TOWN OF NORRIS ARM
LAND USE ZONING
2007-2017
MAP - 2**

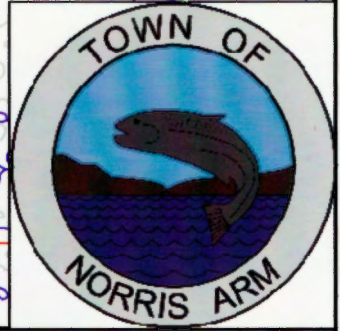
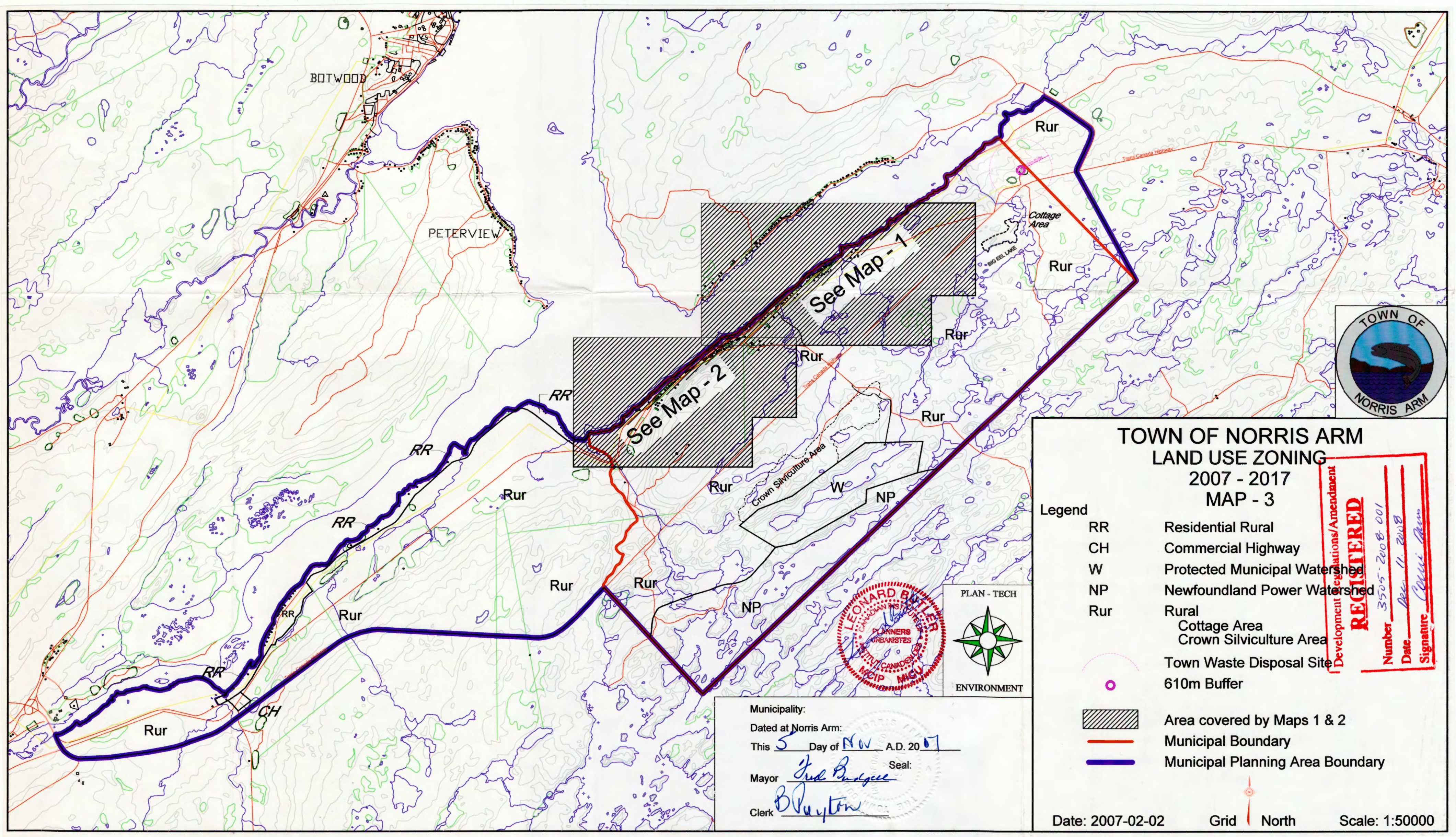
Legend

Res	Residential
RR	Residential Rural
RSA	Residential Subdivision Area
MD	Mixed Development
Con	Open Space/Conservation
CH	Commercial Highway
CL	Commercial Local
Rec	Recreation
Ind	Industrial
LI	Light Industrial
Pu	Public Use
Cem	Cemetery
Rur	Rural
	Cottage Area
	Municipal Boundary
	Municipal Planning Area Boundary

Development Regulations/Amendments
REGISTERED
Number 3505-2008-001
Date Dec 11, 2008
Signature *[Signature]*



Municipality:
Dated at Norris Arm:
This 5 Day of Nov A.D. 2007
Mayor *[Signature]* Seal:
Clerk *[Signature]*



**TOWN OF NORRIS ARM
LAND USE ZONING
2007 - 2017
MAP - 3**

- Legend**
- RR Residential Rural
 - CH Commercial Highway
 - W Protected Municipal Watershed
 - NP Newfoundland Power Watershed
 - Rur Rural
 - Cottage Area
 - Crown Silviculture Area
 - Town Waste Disposal Site
 - 610m Buffer
 - ▨ Area covered by Maps 1 & 2
 - Municipal Boundary
 - Municipal Planning Area Boundary

Development Regulations/Amendment
REGISTERED
 Number 3505-2008-001
 Date Dec 11, 2008
 Signature *Colin Brown*



Municipality:
 Dated at Norris Arm:
 This 5 Day of Nov A.D. 2007
 Mayor *Jud Brudger* Seal:
 Clerk *B. Peyton*