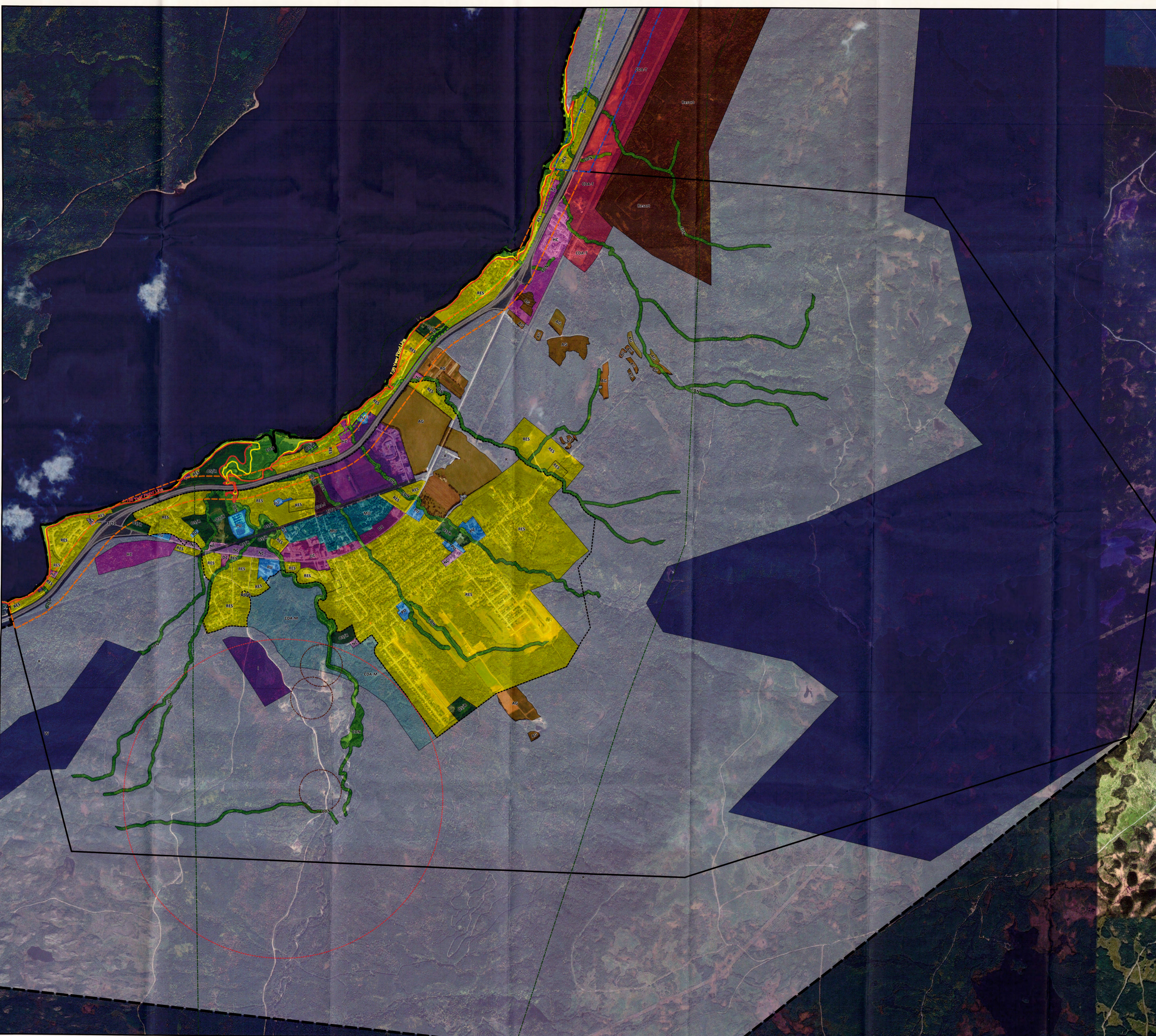
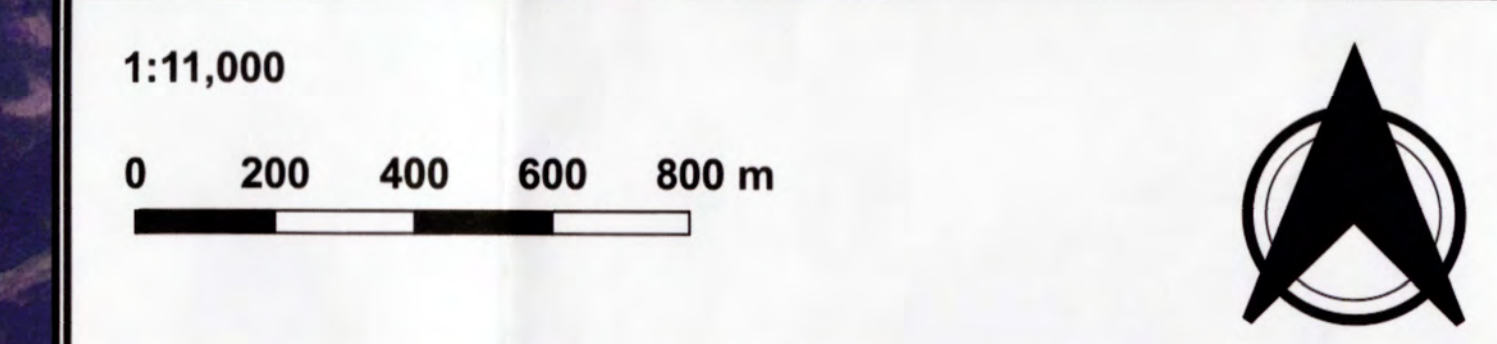


Town of Pasadena

Municipal Plan 2019-2029 Future Land Use Map Municipal Boundary Extent



- Planning Area Boundary
- Municipal Boundary
- Future Land Use Designation**
- Residential (RES)
- Downtown Commercial (DC)
- Highway Commercial (HC)
- Neighbourhood Commercial (NC)
- Industrial (I)
- Agriculture (AG)
- Comprehensive Development Area - Tourism (CDA-T)
- Comprehensive Development Area - Mixed (CDA-M)
- Comprehensive Development Area - Industrial (CDA-I)
- Conservation (CON)
- Mixed Use (MU)
- Open Space / Recreation (OS/R)
- Protected Water Supply (W)
- Public Use (PU)
- Resort (Resort)
- Rural (R)
- Transportation / Transmission Corridor (T/Tc)
- Overlay**
- T'Railway Provincial Park
- 300m Quarry Referral Buffer
- Waste Referral Boundary
- 150m Protected Road Building Control Line
- 100m Protected Road Building Control Line
- Agricultural Development Area
- Growth Management Boundary
- Linear Overlay**
- 1:100 Year Flood Line
- 1:20 Year Flood Line



Dated at the Town of Pasadena
this 31st day of March, 2021

Mayor

Chief Administrative Officer

I CERTIFY THAT THE MUNICIPAL PLAN MAP HAS BEEN PREPARED IN ACCORDANCE WITH THE REQUIREMENTS OF THE URBAN AND RURAL PLANNING ACT, 2000.

Anna Myers, MCIP

Municipal Plan/Amendment
REGISTERED
Number 31555-2021-000
Date 31/03/2021
Signature

Town of Pasadena

Municipal Plan 2019-2029 Future Land Use Map Planning Area Boundary Extent

- Planning Area Boundary
- Municipal Boundary
- Future Land Use Designation**
 - Residential (RES)
 - Downtown Commercial (DC)
 - Highway Commercial (HC)
 - Neighbourhood Commercial (NC)
 - Industrial (I)
 - Agriculture (AG)
 - Comprehensive Development Area - Tourism (CDA-T)
 - Comprehensive Development Area - Mixed (CDA-M)
 - Comprehensive Development Area - Industrial (CDA-I)
 - Conservation (CON)
 - Mixed Use (MU)
 - Open Space / Recreation (OS/R)
 - Protected Water Supply (W)
 - Public Use (PU)
 - Resort (Resort)
 - Rural (R)
 - Transportation / Transmission Corridor (T/TC)
- Overlay**
 - T'Railway Provincial Park
 - 300m Quarry Referral Buffer
 - Waste Referral Boundary
 - 150m Protected Road Building Control Line
 - 100m Protected Road Building Control Line
 - Agricultural Development Area
 - Growth Management Boundary
- Linear Overlay**
 - 1:100 Year Flood Line
 - 1:20 Year Flood Line

1:20,000
0 1 2 km



Dated at the Town of Pasadena

this 31st day of March, 2021

[Signature]
Mayor

[Signature]
Chief Administrative Officer

I CERTIFY THAT THE MUNICIPAL PLAN MAP HAS BEEN PREPARED IN ACCORDANCE WITH THE REQUIREMENTS OF THE URBAN AND RURAL PLANNING ACT, 2000.



[Signature]
Anna Myers, MCIP

Municipal Plan/Amendment
REGISTERED
Number: 2025-2021-000
Date: June 1, 2021
Signature: *[Signature]*

Prepared by: A Perry
References:
Canvec 1:50,000, NRCAN 2018.
Map Data: Google, Maxar Technologies, 2015.
Projection: NAD 83 UTM Zone 21N
Prepared on: 2021-Feb-16

