

**TOWN OF
PETTY HARBOUR-
MADDOX COVE**

**Development Regulations 2014
Land Use Zoning Map**

ZONES:

HA	HERITAGE AREA
RES	RESIDENTIAL
H	HARBOURFRONT
C-I	COMMERCIAL-INDUSTRIAL
RU	RURAL
OS	OPEN SPACE CONSERVATION
REC	RECREATION
W	WATERSHED

LEGEND:

	MUNICIPAL BOUNDARY
	ROADS (PAVEMENT)
	ROADS (GRAVEL)
	RIVERS
	WATER MAIN
	SANITARY SEWER
	TRAILS

Development Regulations/Amendment
REGISTERED
Number: 2014-2015-001
Date: November 24, 2014
Signature: *[Signature]*

Dated At Petty Harbour-Maddox Cove,
Newfoundland and Labrador

This 24th day of November, 2014

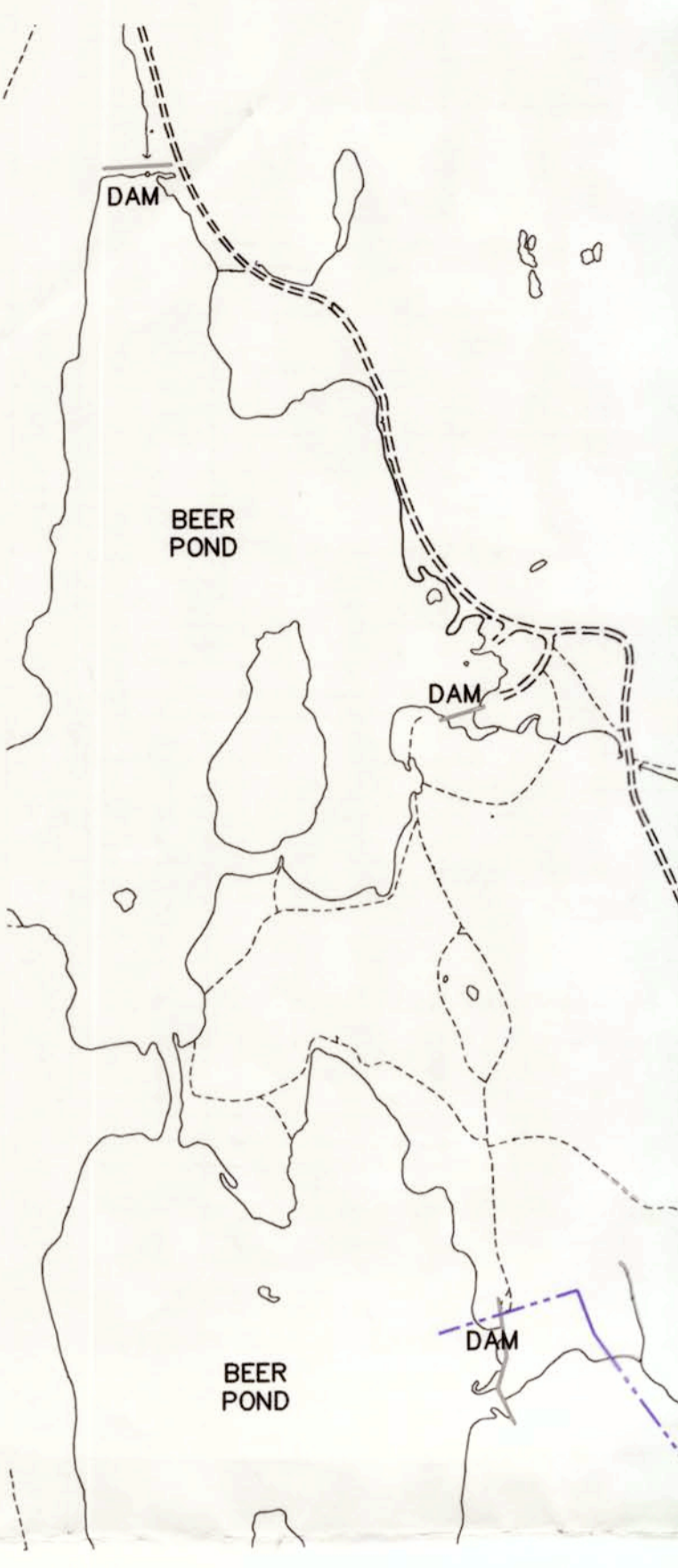
[Signature]
Stephanie Stack, Chief Administrator Officer

I certify that the Town of Petty Harbour-Maddox
Cove Municipal Plan 2012-2022 have been
prepared in accordance with the requirements of
the "Urban and Rural Planning Act, 2000":

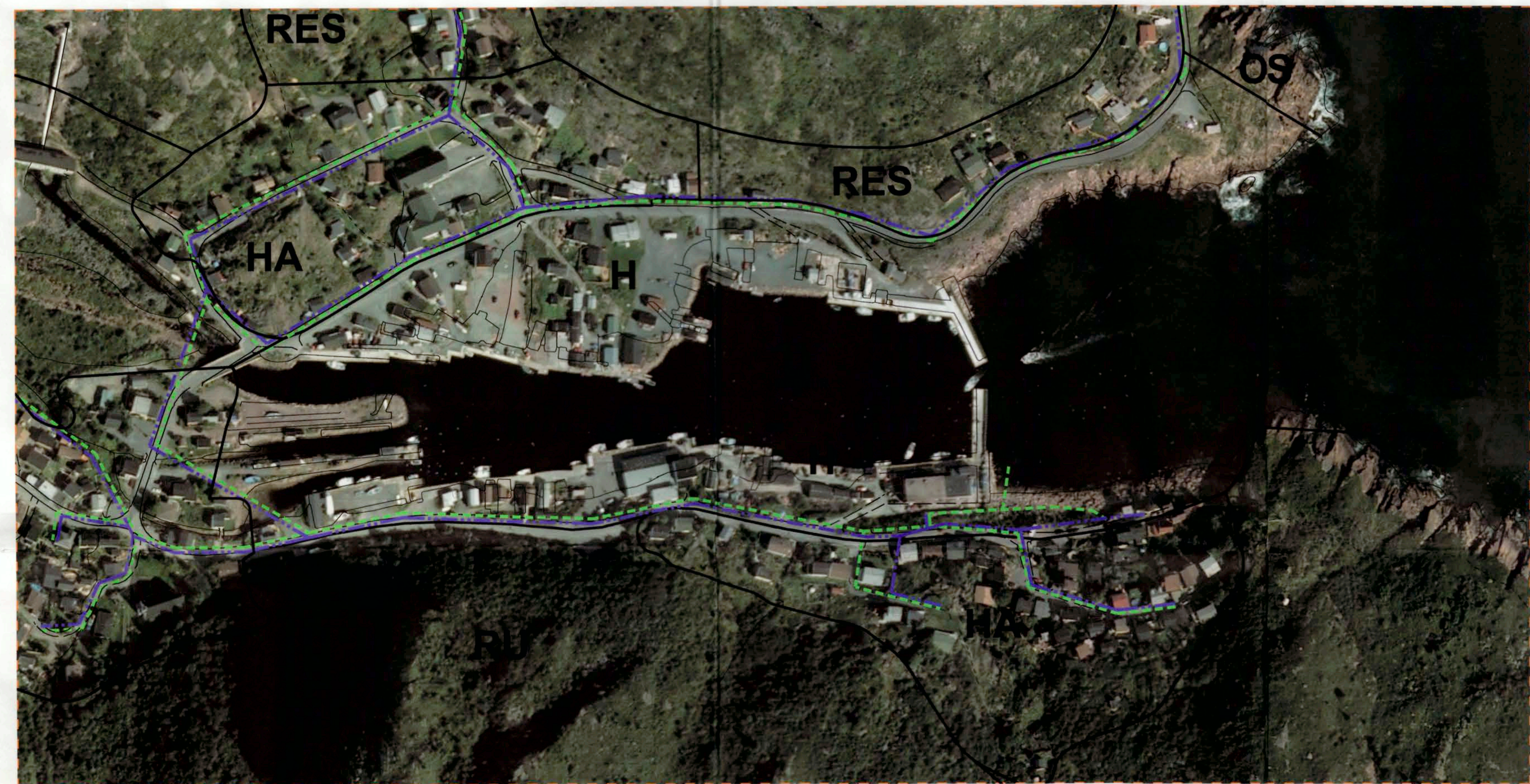
[Signature]
Mary Bishop, FCIP

CBCL Mary D Bishop, MURP, FCIP
Senior Project Manager
187 KENMOUNT ROAD
ST. JOHN'S, Newfoundland and Labrador
A1B 3P9
Email: mary@cbcl.ca
Phone: (709) 364-8623
Fax: (709) 364-8627
Consulting Engineers

REVISIONS & AMENDMENTS



SCALE: 1:5000
0m 100m 200m 300m 400m 500m



INSERT MAP
SCALE: 1:2000
0m 50m 100m 150m 200m 250m