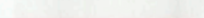
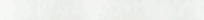
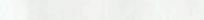
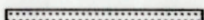

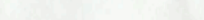


Municipal Plan/Amendment  
**REGISTERED**  
 Number 4230-2011-003  
 Date May 13, 2011  
 Signature [Signature]

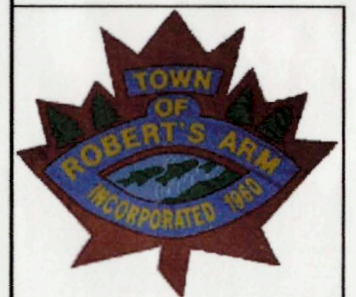
Municipal Plan/Amendment  
**REGISTERED**  
 Number 4230-2011-003  
 Date \_\_\_\_\_  
 Signature \_\_\_\_\_

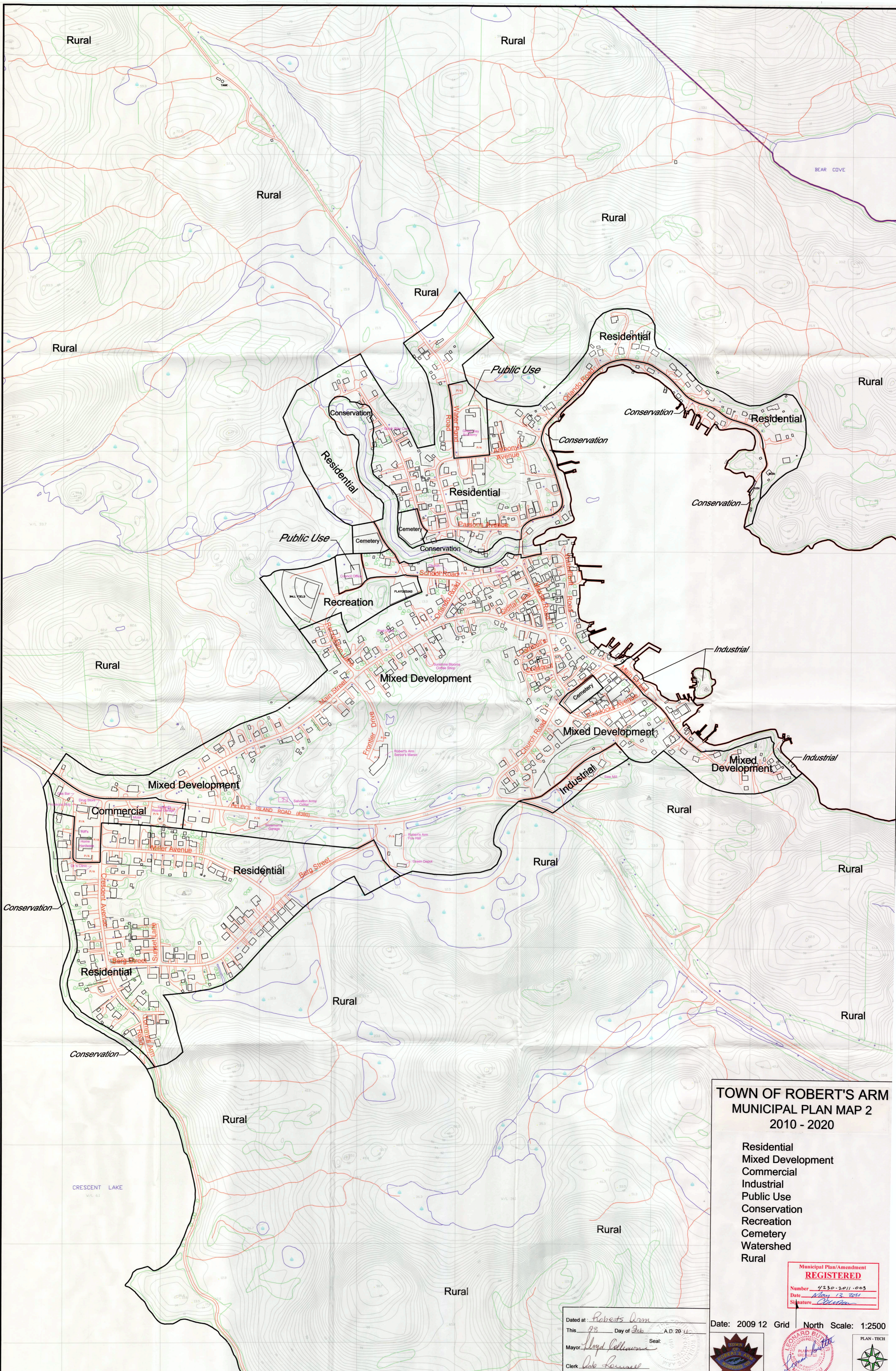
**TOWN OF ROBERT'S ARM  
 MUNICIPAL PLAN MAP 1  
 2010 - 2020**

-  Industrial
-  Watershed
-  Rural
-  Municipal Boundary
-  Municipal Planning Area Boundary
-  Area Covered by Map 2

Dated at: Roberts Arm  
 This 29 Day of February A.D. 20 11  
 Mayor Lloyd Collinson Seal:  
 Clerk Dee Louise

Date: 2009 12 Grid **North** Scale: 1:25000





**TOWN OF ROBERT'S ARM  
MUNICIPAL PLAN MAP 2  
2010 - 2020**

- Residential
- Mixed Development
- Commercial
- Industrial
- Public Use
- Conservation
- Recreation
- Cemetery
- Watershed
- Rural

Municipal Plan/Amendment  
**REGISTERED**  
Number 4230-2011-003  
Date May 13, 2011  
Signature *Christina*

Dated at: *Robert's Arm*  
This: *29* Day of *Feb* A.D. 20 *11*  
Mayor: *Lloyd Collinson* Seal:  
Clerk: *Deb Roussel*

Date: 2009 12 Grid North Scale: 1:2500

