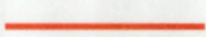




Development Regulations/Amendment
REGISTERED
 Number 4230-2011-003
 Date May 13, 2011
 Signature [Signature]

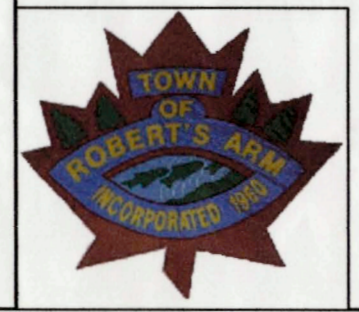
**TOWN OF ROBERT'S ARM
 ZONING MAP 1
 2010 - 2020**

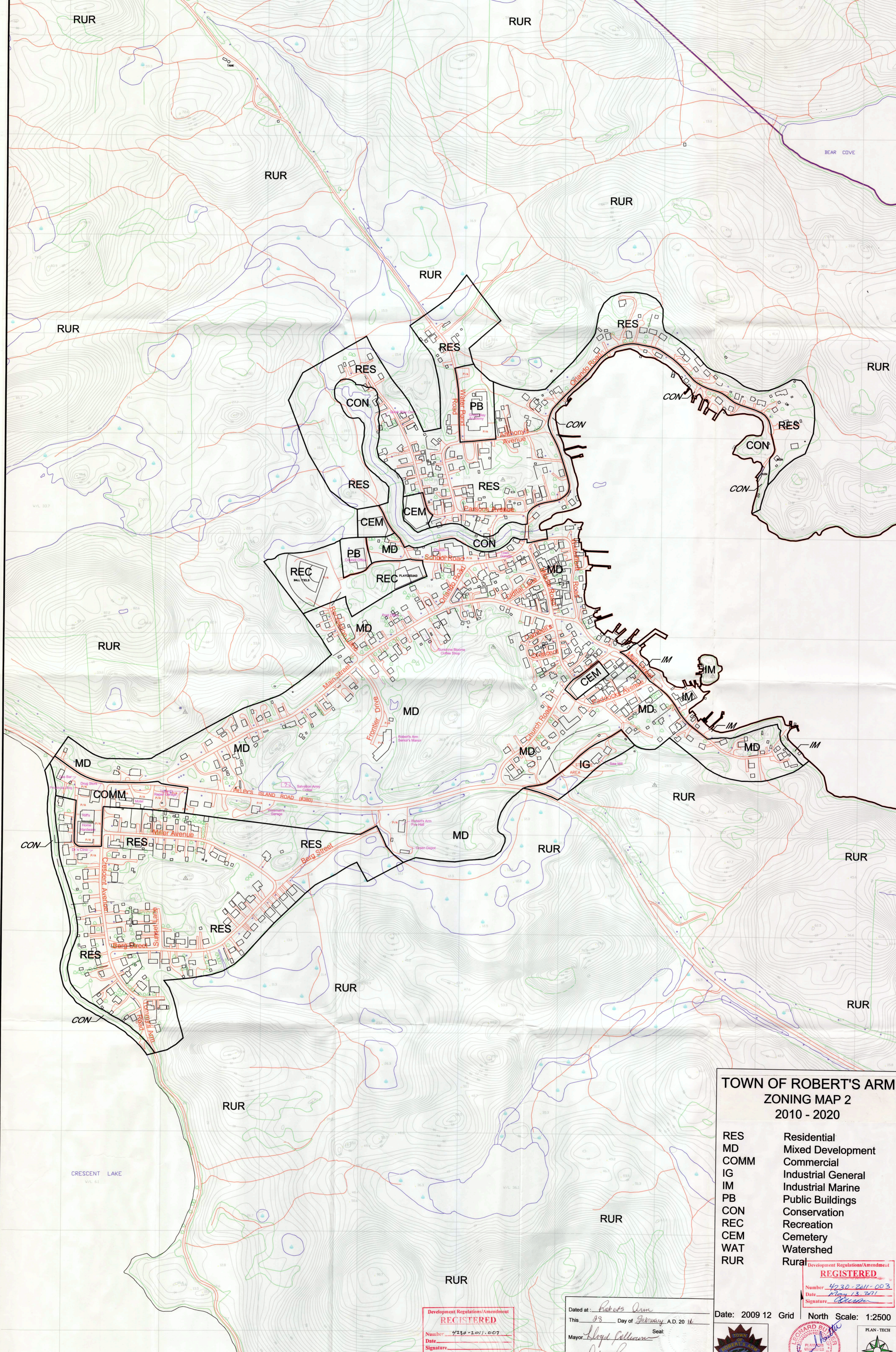
- IG Industrial General
- WAT Watershed
- RUR Rural
-  Municipal Boundary
-  Municipal Planning Area Boundary
-  Area Covered by Map 2

Date: 2009 12 Grid North Scale: 1:25000

Development Regulations/Amendment
REGISTERED
 Number 4320-2011-003
 Date _____
 Signature _____

Dated at: Robert's Arm
 This 28 Day of February A.D. 2011
 Mayor [Signature] Seal: _____
 Clerk [Signature]





**TOWN OF ROBERT'S ARM
ZONING MAP 2
2010 - 2020**

RES	Residential
MD	Mixed Development
COMM	Commercial
IG	Industrial General
IM	Industrial Marine
PB	Public Buildings
CON	Conservation
REC	Recreation
CEM	Cemetery
WAT	Watershed
RUR	Rural

Development Regulations/Amendment
REGISTERED
Number 4230-2011-003
Date May 13, 2011
Signature [Signature]

Development Regulations/Amendment
REGISTERED
Number 4230-2011-003
Date May 13, 2011
Signature [Signature]

Dated at: Robert's Arm
This 23 Day of February, A.D. 20 11
Mayor Lloyd Williams Seal:
Clerk Deb Rowland

Date: 2009 12 Grid North Scale: 1:2500

