

Town of
SALVAGE
Municipal Plan 2021 - 2031
Future Land Use Map 1

- Residential
- Open Space Conversation
- Coastal
- Rural
- Protected Water Supply Area

----- Planning Area Boundary



Dated at Salvage, Newfoundland and Labrador

This 10 day of June, 2022

Bruce Critchley
Bruce Critchley, Mayor

Bev King
Bev King, Town Clerk

Municipal Plan
REGISTERED

Number 1510-2022-000

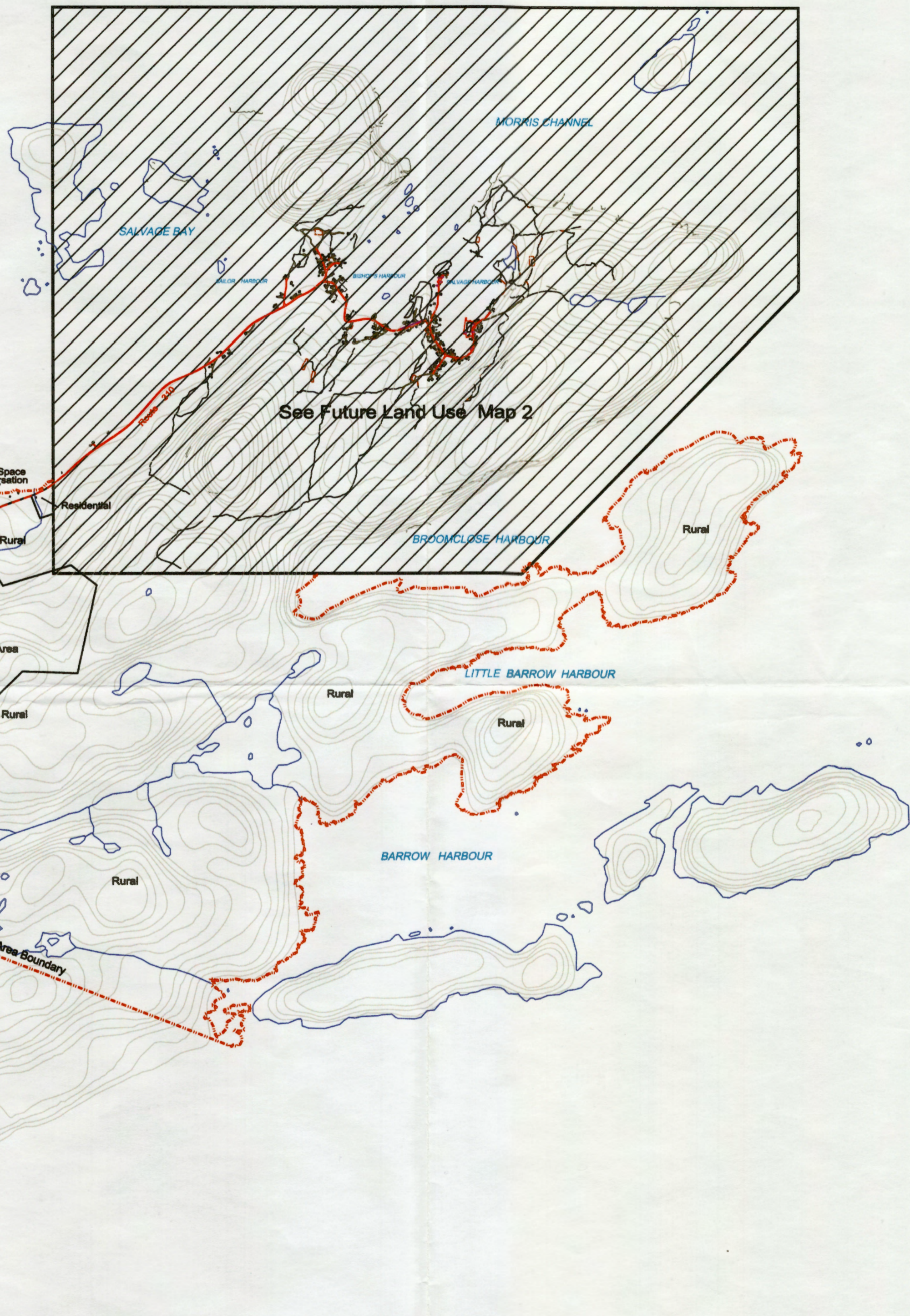
Date 22 JULY 2022

Signature *[Signature]*

I certify that this Municipal Plan for the Town of Salvage has been prepared in accordance with the requirements of the Urban and Rural Planning Act 2000:



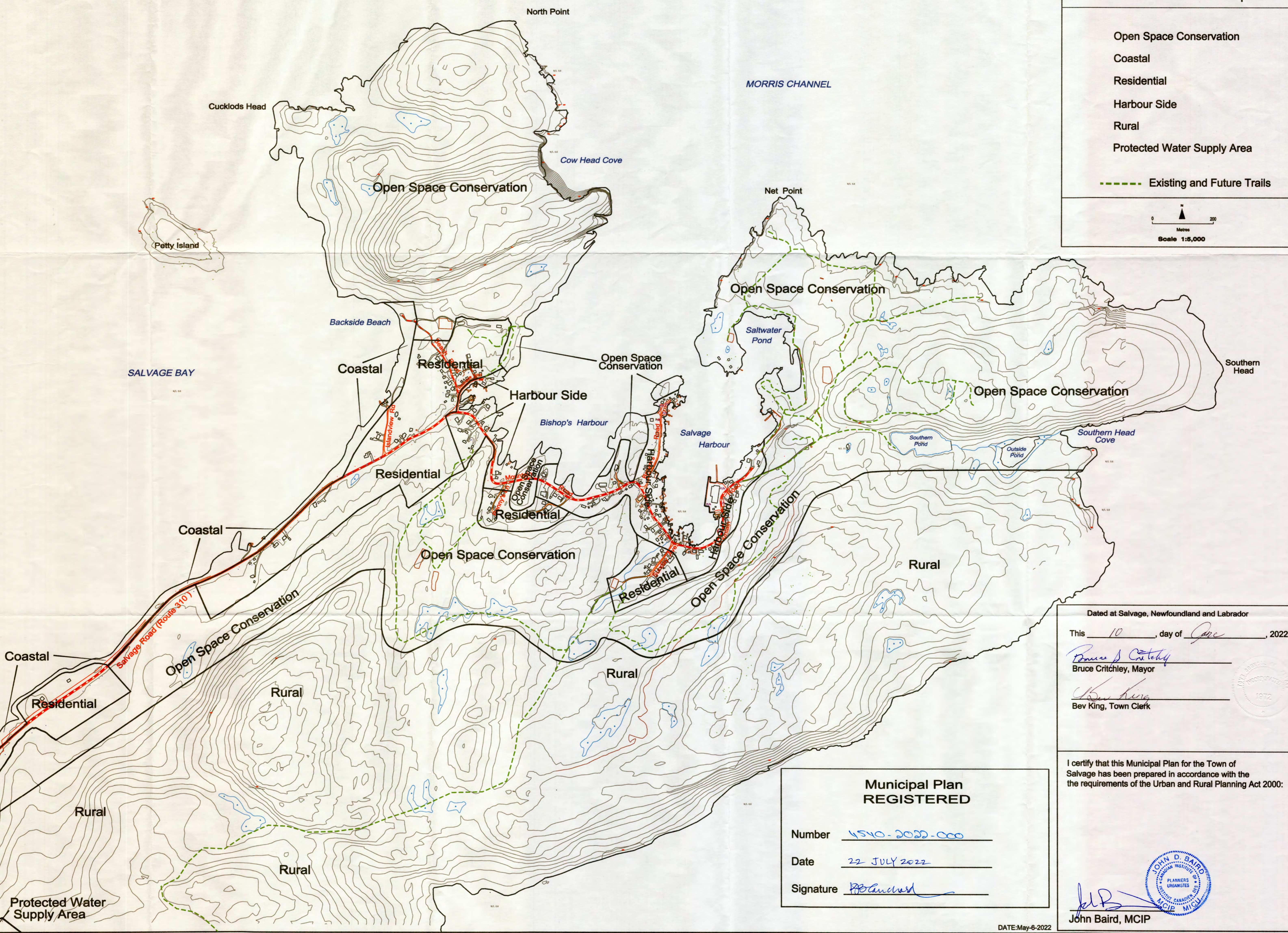
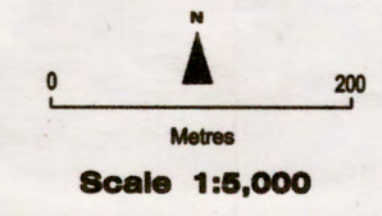
John Baird
John Baird, MCIP



Town of
SALVAGE
Municipal Plan 2021 - 2031
Future Land Use Map 2

- Open Space Conservation
- Coastal
- Residential
- Harbour Side
- Rural
- Protected Water Supply Area

--- Existing and Future Trails



Dated at Salvage, Newfoundland and Labrador

This 10 day of June, 2022

Bruce Critchley
Bruce Critchley, Mayor

Bev King
Bev King, Town Clerk



Municipal Plan REGISTERED

Number 4540-2022-000

Date 22 JULY 2022

Signature *[Signature]*

I certify that this Municipal Plan for the Town of Salvage has been prepared in accordance with the requirements of the Urban and Rural Planning Act 2000:

[Signature]
John Baird, MCIP

