

REVISED STATUTES OF NEWFOUNDLAND

URBAN AND RURAL PLANNING ACT  
TOWN OF CARTWRIGHT  
MUNICIPAL PLAN, 1995 -2005

MUNICIPAL PLAN AMENDMENT NO. 1

PROPOSAL FOR NEW RESIDENTIAL DEVELOPMENT

Prepared by:

John Baird, MCIP  
Baird Planning Associates  
P.O. Box 105  
Glovertown South, NF  
A0G 2M0

MAY, 2000

**URBAN AND RURAL PLANNING ACT**

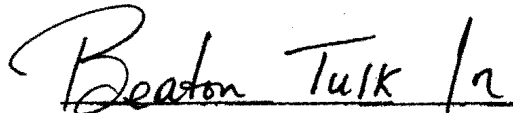
**TOWN OF CARTWRIGHT**

**MUNICIPAL PLAN AMENDMENT NO. 1**

***NOTICE OF APPROVAL***

I, Joan Marie Aylward, Minister of Municipal and Provincial Affairs, under and by virtue of the powers conferred by the Urban and Rural Planning Act, hereby approve the **Town of Cartwright Municipal Plan Amendment No. 1**, adopted by the Town Council of Cartwright on the \_\_\_\_\_ day of \_\_\_\_\_, 2000.

Dated at St. John's, this 18 Day of AUGUST, 2000.



Joan Marie Aylward, MHA  
St. John's Centre District  
Minister of Municipal & Provincial Affairs

THE URBAN AND RURAL PLANNING ACT

COUNCIL RESOLUTION TO ADOPT  
TOWN OF CARTWRIGHT  
MUNICIPAL PLAN AMENDMENT NO. 1

Resolved pursuant to Section 15 of the Urban and Rural Planning Act that the Council of the Town of Cartwright adopt the Amendment attached as Schedule A. Resolved further, pursuant to Section 16 of the Urban and Rural Planning Act, that the Cartwright Town Council apply to the Minister of Municipal and Provincial Affairs for the setting of the time and place of a public hearing to consider objection or representations to this Amendment.

Moved by: Mayor Rosalie Learning

Seconded by: Councillor Van Roberts

Rosalie Learning  
Rosalie Learning, Mayor

Shirley Hopkins  
Shirley Hopkins, Town Clerk

SEALS AND SIGNATURE:

This is signed and sealed pursuant to Section 15 (3) of the Urban and Rural Planning Act

this 19<sup>th</sup> day of May, 2000.

Rosalie Learning  
Rosalie Learning, Mayor

CLERK'S CERTIFICATE

Certified that the attached Amendment is a correct copy of the Amendment adopted by the

Cartwright Town Council on May 15<sup>th</sup> 2000.

Shirley Hopkins  
Shirley Hopkins, Town Clerk

SCHEDULE A

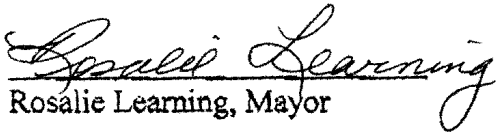
TOWN OF CARTWRIGHT - CARTWRIGHT MUNICIPAL PLAN, 1995 - 2005

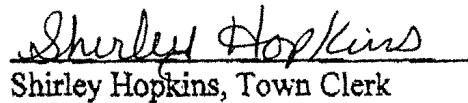
AMENDMENT NO. 1

The Cartwright Municipal Council, as Planning Authority for the lands affected, proposes the following amendment to the Cartwright Municipal Plan, 1995 - 2005.

1. The Cartwright Municipal Plan, 1995 - 2005 Future Land Use Map 1, shall be amended as follows:
  - i) Those lands comprising approximately 3.3 hectares, and currently designated as "Recreation" shall be changed to "Residential." The location of this land is shown on the attached map.

Dated this 19<sup>th</sup> day of May, 2000.

  
Rosalie Learning, Mayor

  
Shirley Hopkins, Town Clerk

~~MINISTER:~~

~~Dated at St. John's this \_\_\_\_\_ of \_\_\_\_\_, 2000.~~

~~\_\_\_\_\_  
Joan Marie Aylward, M.H.A.  
St. John's Centre District  
Minister of Municipal and Provincial Affairs~~

---

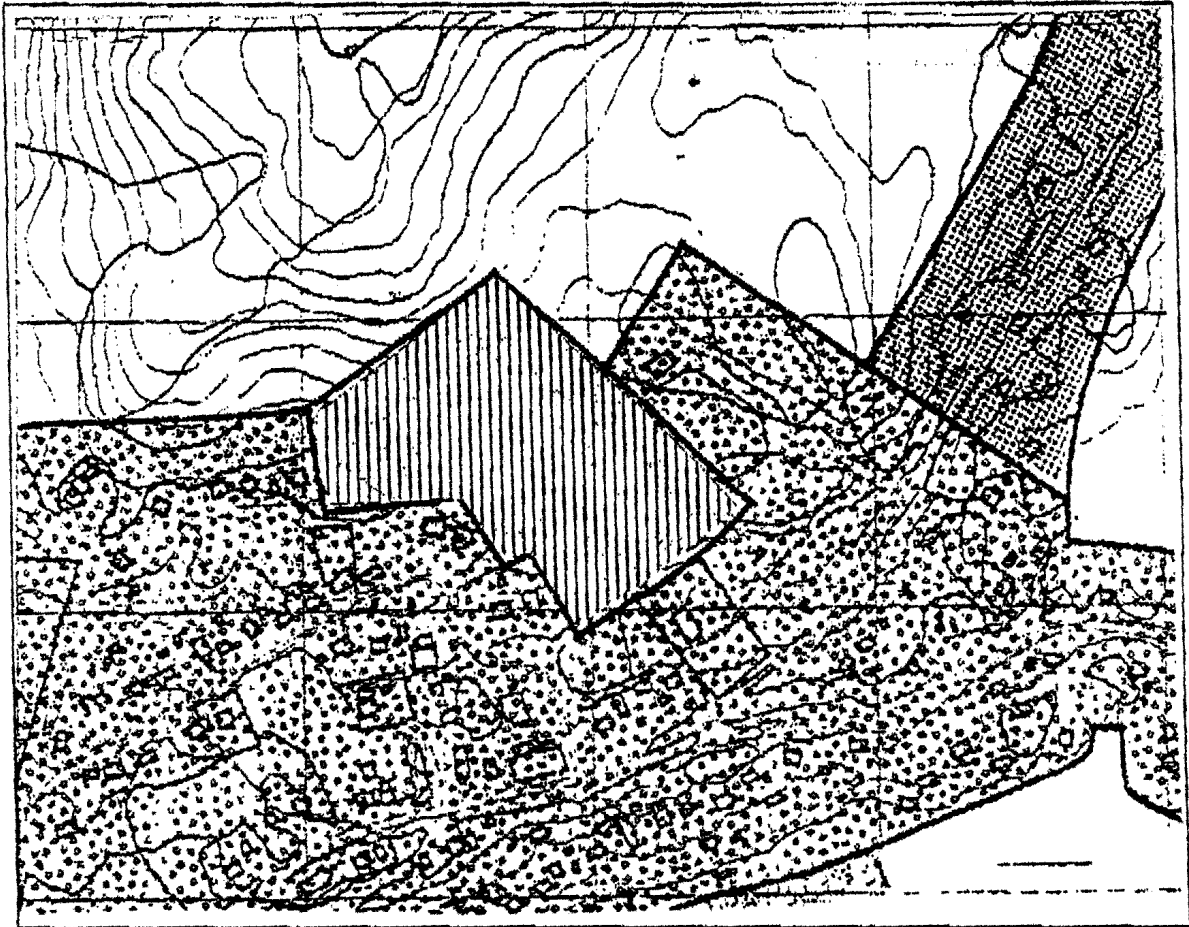
## PURPOSE OF AMENDMENT

The Council of the Town of Cartwright wishes to amend the Cartwright Municipal Plan, 1995-2005 to accommodate new residential development.

To accommodate the development, it is proposed to redesignate approximately 3.3 hectares of land from Recreation to Residential.

The land in question is the former location of an outdoor ice rink, which is now abandoned. The site is scrub land abutting the Mixed Development designation to the east, south and west and the Rural designation to the north. Existing nearby development is primarily residential. The site is accessible to water and sewer trunk services.

SCHEDULE A  
CARTWRIGHT MUNICIPAL PLAN, 1995-2005  
FUTURE LAND USE MAP 1



REDESIGNATE FROM "Recreation" to "Residential"



Dated at Cartwright this 19<sup>th</sup> day of May, 2000.

*Rosalie Learning*  
Rosalie Learning, Mayor

*Shirley Hopkins*  
Shirley Hopkins, Town Clerk

MINISTER:

Dated at St. John's this 18 day of AUGUST, 2000.

*Beaton Tulk for*  
Joan Marie Aylward, MHA  
St. John's Centre District  
Minister of Municipal and Provincial Affairs