

---

REVISED STATUTES OF NEWFOUNDLAND

URBAN AND RURAL PLANNING ACT  
TOWN OF SUMMERFORD  
MUNICIPAL PLAN, 1996-2006

MUNICIPAL PLAN AMENDMENT NO. 2

PROPOSAL FOR A NEW SALVATION ARMY CHURCH

Prepared by:

John Baird, MCIP  
Baird Planning Associates  
P.O. Box 105  
Glovertown South, NF  
A0G 2M0

APRIL, 2000

---

---

### PURPOSE OF AMENDMENT

The Council of the Town of Summerford wishes to amend the Summerford Municipal Plan, 1996-2006 to accommodate the development of a new Salvation Army Church.

The land in question is located on the east side of Highway 340, abutting the north side of the Jim Penney Ltd. car dealership. Other nearby properties include the Norpen bus depot immediately south of Jim Penney Ltd. and a private residence on the west side of the highway opposite the bus depot. A new regional K-12 school has been approved for development 500 metres north of the site on the west side of the highway.

To accommodate the development, it is proposed to redesignate approximately 0.7 hectares of land from Rural to Mixed Development. This site has a frontage of approximately 70 metres on Highway 340.

THE URBAN AND RURAL PLANNING ACT

COUNCIL RESOLUTION TO ADOPT  
TOWN OF SUMMERFORD  
MUNICIPAL PLAN AMENDMENT NO. 2

Resolved pursuant to Section 15 of the Urban and Rural Planning Act that the Council of the Town of Summerford adopt the Amendment attached as Schedule A. Resolved further, pursuant to Section 16 of the Urban and Rural Planning Act, that the Summerford Town Council apply to the Minister of Municipal and Provincial Affairs for the setting of the time and place of a public hearing to consider objection or representations to this Amendment.

Moved by: Judy Bowers

Seconded by: Judy Bowers

Clayton Ledrew  
Clayton Ledrew, Mayor

Vicky Anstey  
Vicky Anstey, Town Clerk

SEALS AND SIGNATURE:

This is signed and sealed pursuant to Section 15 (3) of the Urban and Rural Planning Act

this 3 day of May, 2000.

Clayton Ledrew  
Clayton Ledrew, Mayor

CLERK'S CERTIFICATE

Certified that the attached Amendment is a correct copy of the Amendment adopted by the

Summerford Town Council on April 10 2000.

Vicky Anstey  
Vicky Anstey, Town Clerk

SCHEDULE A

TOWN OF SUMMERFORD - SUMMERFORD MUNICIPAL PLAN, 1996-2006

AMENDMENT NO. 2

The Summerford Municipal Council, as Planning Authority for the lands affected, proposes the following amendment to the Summerford Municipal Plan, 1996-2006.

1. The Summerford Municipal Plan, 1996-2006 Future Land Use Map B, shall be amended as follows:
  - i) Those lands comprising approximately 0.70 hectares, and currently designated as "Rural" shall be changed to "Mixed Development." The location of this land is shown on the attached map.


Dated this 3 day of May, 2000.

  
Clayton Ledrew, Mayor

  
Vicky Anstey, Town Clerk

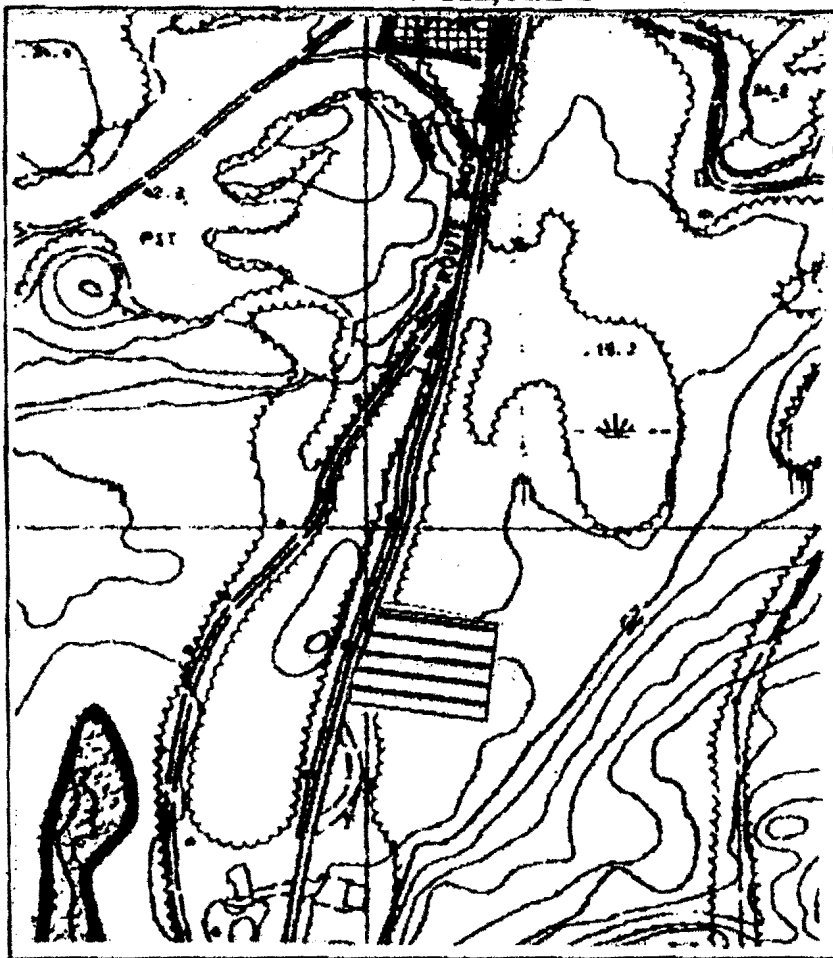
MINISTER:

Dated at St. John's this 25<sup>th</sup> of SEPTEMBER, 2000.

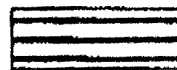
  
Joan Marie Aylward, M.H.A.  
St. John's Centre District  
Minister of Municipal and Provincial Affairs

SCHEDULE A

SUMMERFORD MUNICIPAL PLAN, 1993-2003  
FUTURE LAND USE, MAP B



REDESIGNATE FROM "Rural" to "Mixed Development"



Dated at Summerford this 3 day of May, 2000.

Clayton Ledrew  
Clayton Ledrew, Mayor

Vicky Anstey  
Vicky Anstey, Town Clerk

MINISTER:

Dated at St. John's this 25<sup>th</sup> day of SEPTEMBER, 2000.

Joan Marie Aylward  
Joan Marie Aylward, MHA  
St. John's Centre District  
Minister of Municipal and Provincial Affairs