



THE URBAN AND RURAL PLANNING ACT

COUNCIL RESOLUTION TO ADOPT  
TOWN OF SUMMERFORD  
MUNICIPAL PLAN AMENDMENT NO. 3

Resolved pursuant to Section 15 of the Urban and Rural Planning Act that the Council of the Town of Summerford adopt the Amendment attached as Schedule A. Resolved further, pursuant to Section 16 of the Urban and Rural Planning Act, that the Summerford Town Council apply to the Minister of Municipal and Provincial Affairs for the setting of the time and place of a public hearing to consider objection or representations to this Amendment.

Moved by: Bruce Bowers

Seconded by: Alvin Rideout

Clayton Ledrew  
Clayton Ledrew, Mayor

Vicky Anstey  
Vicky Anstey, Town Clerk

SEALS AND SIGNATURE:

This is signed and sealed pursuant to Section 15 (3) of the Urban and Rural Planning Act

this 12 day of October, 2000.

Clayton Ledrew  
Clayton Ledrew, Mayor

CLERK'S CERTIFICATE

Certified that the attached Amendment is a correct copy of the Amendment adopted by the

Summerford Town Council on July 15 2000.

Vicky Anstey  
Vicky Anstey, Town Clerk

## PURPOSE OF AMENDMENT

The Council of the Town of Summerford wishes to amend the Summerford Municipal Plan, 1996-2006 to accommodate the development of a new regional school on the east side of Highway 340. This K-12 school will replace four existing schools on New World Island. It will be approximately 63,000 square feet in size.

To accommodate the development, it is proposed to redesignate approximately 5.0 hectares of land from Rural to Mixed Development. The site abuts the property line of the Jim Penney Ltd. car dealership to the south and Rural land with a number of pits and quarries to the north and east. The opposite (west) side of Highway 340 is undeveloped Rural land. The total school site will incorporate a 0.7-hectare area previously amended to Mixed Development to accommodate the development of a new Salvation Army Church. The Church has since agreed to relinquish this site for the school development. The total school site will be approximately 5.7 hectares, including the area now proposed for amendment as well as the area previously amended for the Salvation Army Church.

The Department of Works, Services and Transportation has indicated that it will agree to this amendment subject to necessary measures as determined by the Department to minimize highway traffic hazards in the vicinity of the school.

The Department of Mines and Energy has agreed to this amendment based on the School District's understanding that quarry operations shall continue in mineral working areas located within 1,000 metres of the new school building.

SCHEDULE A

TOWN OF SUMMERFORD - SUMMERFORD MUNICIPAL PLAN, 1996-2006

AMENDMENT NO. 3

The Summerford Municipal Council, as Planning Authority for the lands affected, proposes the following amendment to the Summerford Municipal Plan, 1996-2006.

1. The Summerford Municipal Plan, 1996-2006 Future Land Use Map B, shall be amended as follows:
  - i) Those lands comprising approximately 5.0 hectares, and currently designated as "Rural" shall be changed to "Mixed Development." The location of this land is shown on the attached map.

Dated this 18<sup>th</sup> day of October, 2000.

Clayton Ledrew  
Clayton Ledrew, Mayor

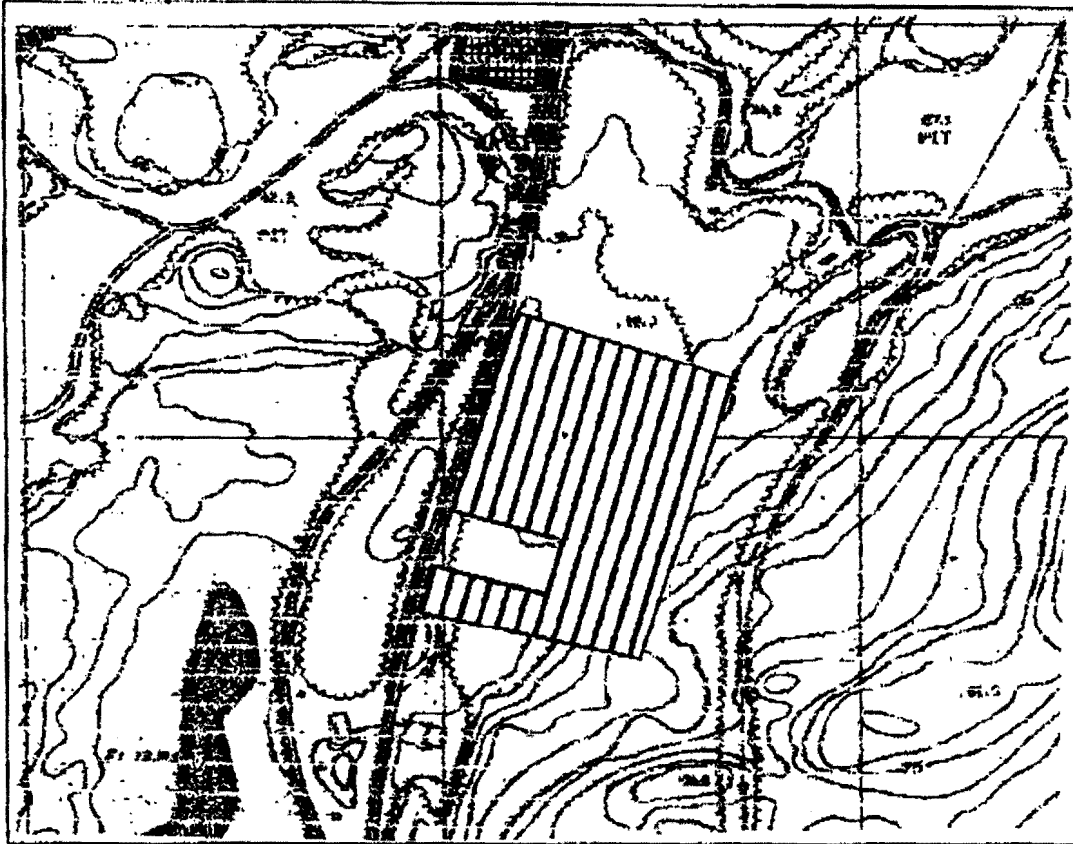
Vicky Ansley  
Vicky Ansley, Town Clerk

MINISTER:

Dated at St. John's this 30<sup>th</sup> of NOVEMBER, 2000.

Joan Marie Aylward  
Joan Marie Aylward, M.H.A.  
St. John's Centre District  
Minister of Municipal and Provincial Affairs

SCHEDULE A  
SUMMERFORD MUNICIPAL PLAN, 1993-2003  
FUTURE LAND USE, MAP B  
Scale - 1:5000



REDESIGNATE FROM "Rural" to "Mixed Development"



Dated at Summerford this 18 day of October, 2000.

Clayton Ledrew  
Clayton Ledrew, Mayor

Vicky Anstey  
Vicky Anstey, Town Clerk

MINISTER:

Dated at St. John's this 30<sup>th</sup> day of NOVEMBER, 2000.

Joan Marie Aylward  
Joan Marie Aylward, MHA  
St. John's Centre District  
Minister of Municipal and Provincial Affairs