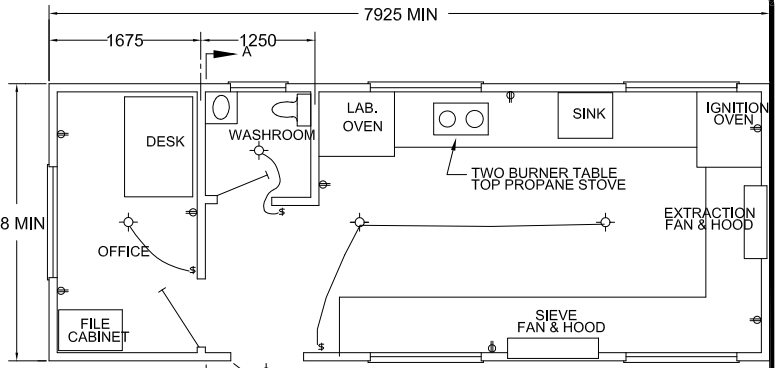
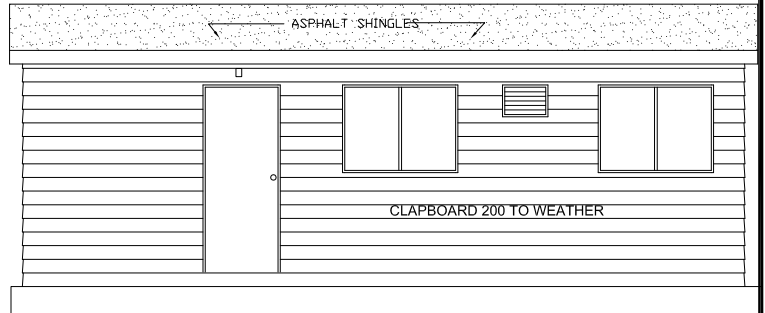


NOTES:

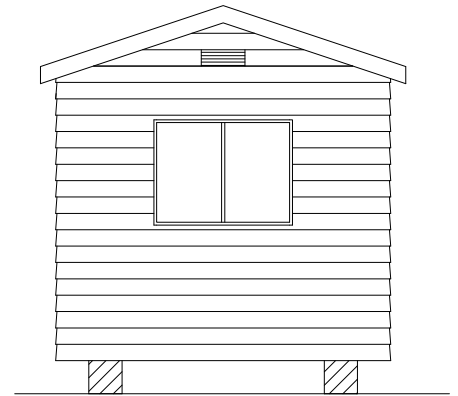
1. WORK BENCHES AROUND THREE WALLS 610mm WIDE 1066mm HIGH. THE TOTAL FRONT PERIMETER BENCH LENGTH TO BE A MINIMUM OF 9700mm. FREE BENCH SPACE SHALL BE A MINIMUM OF 6000mm IN FRONT PERIMETER LENGTH. APPROX. 50% OF BENCH TOP AREA TO BE STAINLESS STEEL AND REMAINDER EPOXY RESIN BLACK.
2. SHELVES REQUIRED UNDER ALL BENCHES 460mm OFF THE FLOOR.
3. WATER TAP TO BE AT LEAST 460mm ABOVE BOTTOM OF SINK. SINK TO BE MINIMUM OF 410mm x 450mm AND STAINLESS STEEL.
4. INCANDESCENT LIGHTING.
5. ELECTRIC OUTLETS SEPARATE LINES.
6. ELECTRIC LABORATORY OVEN M&L 30145 OR EQUIVALENT VENTED OUTSIDE AND CAPABLE OF HEATING TO AMBIENT TEMPERATURE 177°C WITH FORCED AIR CIRCULATION AND ADJUSTABLE SHELVING.
7. TWO BURNER PROPANE TABLE TOP STOVE PROPANE BOTTLE INSTALLED AND STORED OUTSIDE LAB.
8. FIRE EXTINGUISHERS - TWO 4.5kg CARBON DIOXIDE TYPE INSTALLED AS PER REGULATION.
9. ELECTRIC HEAT - 100w FOR LAB, 500w FOR OFFICE, 500w FOR WASHROOM.
10. EXTRACTION FAN - DUNDAS (OR EQUIVALENT) 1/4 hp 1725 RPM FOUNDRY MODEL E-10 INCH. TO MEET AT LEAST 3000 CFM.
11. SIEVE FAN DUNDAS FOUNDRY MODEL E-12 (OR EQUIVALENT) 1/4 hp 1725 RPM TO MEET AT LEAST 1700 CFM.
12. FAN HOODS - EACH FAN EQUIPPED WITH HOOD 700mm ABOVE COUNTERTOP, VENTED OUTSIDE WITH SHIELD TO PREVENT AIR REVERSAL.
13. ALL FURNITURE SHOWN TO BE SUPPLIED BY CONTRACTOR.
14. ASPHALT IGNITION OVEN - TROXLER NTO 4730 OR EQUIVALENT TO BE APPROVED BY THE MATERIALS ENGINEERING DIVISION.
15. SITE SELECTION AND INSTALLATION OF THE ASPHALT IGNITION OVEN AND EXHAUST SYSTEM WILL BE IN ACCORDANCE WITH THE MANUFACTURER'S RECOMMENDATIONS. THE OVEN MUST BE SITUATED SO AS TO PERMIT ACCESS TO THE PLENUM BOX FOR CLEANING. DO NOT LOCATE EXHAUST POINT NEAR AIR INTAKES OR DOORWAYS.
16. CARBON MONOXIDE DETECTOR/ALARM MEETING THE REQUIREMENTS OF UL STANDARD 2034 TO BE INSTALLED.
17. FIELD LABORATORIES MUST BE BLOCKED AND PROPERLY SUPPORTED.



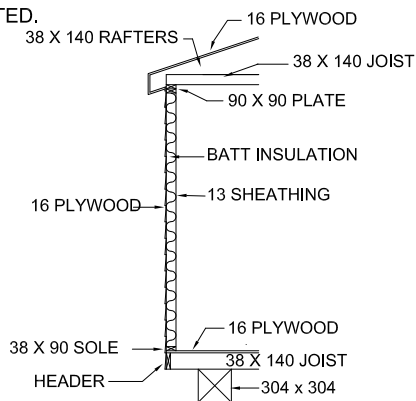
FLOOR PLAN



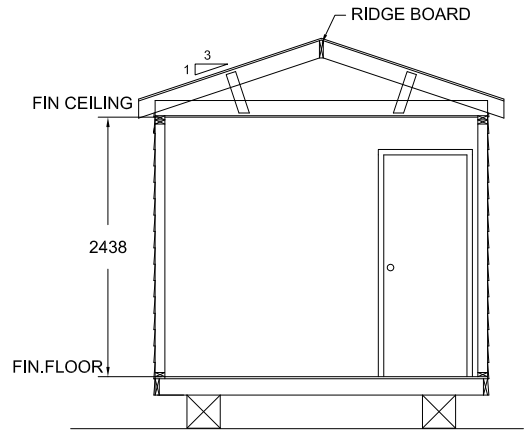
FRONT ELEVATION



LEFT ELEVATION



TYPICAL WALL SECTION



SECTION A-A



TRANSPORTATION AND WORKS
HIGHWAY DESIGN DIVISION

FIELD LABORATORY

DRAWN BY: J. ROBERTS

DATE: REV 02-01-10

NOT TO SCALE