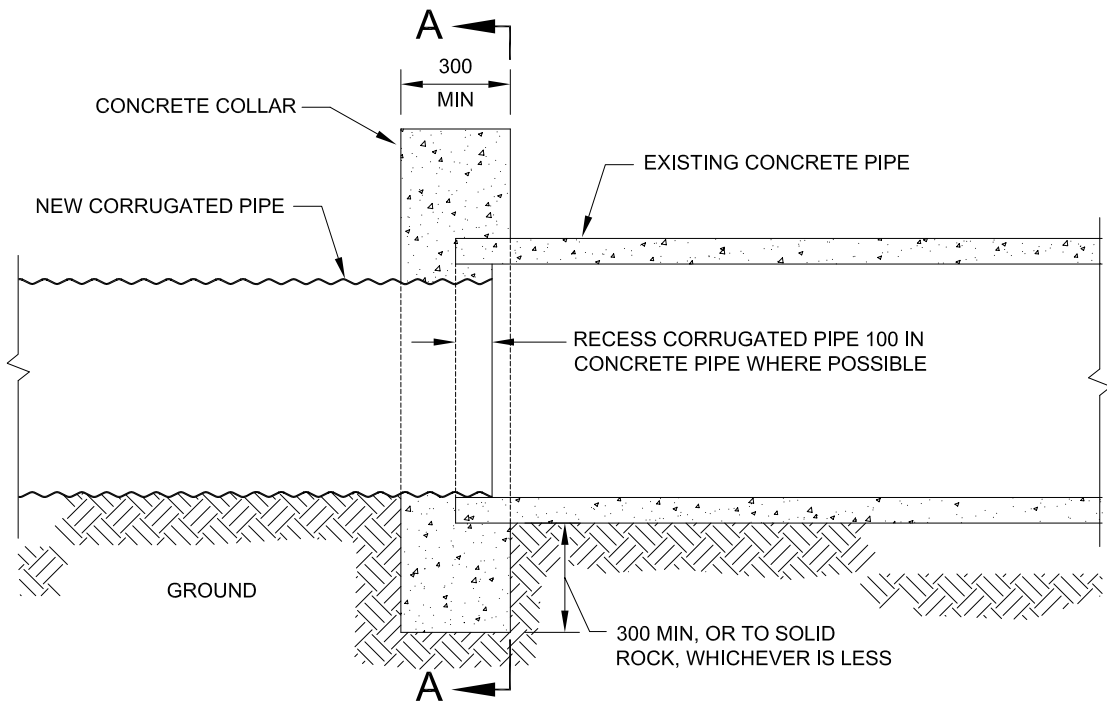


SECTIONAL END ELEVATION ON A : A



SECTIONAL SIDE ELEVATION ALONG CENTER LINE VIEW ON B : B

NOTES:

- ALL CONCRETE TO BE 35 MPa @ 28 DAYS, SLUMP 60, MAXIMUM PARTICLE SIZE 20.
- EXISTING CULVERT SIZES AND TYPES MAY VARY.
- ALL BACKFILLING AND BEDDING TO BE COMPACTED TO 95% PROCTOR DENSITY.



TRANSPORTATION AND WORKS
HIGHWAY DESIGN DIVISION

**TYPICAL CONCRETE COLLAR
AT CONCRETE CULVERT CONNECTION**

DRAWN BY: J. ROBERTS

DATE: REV March 31, 2012

NOT TO SCALE