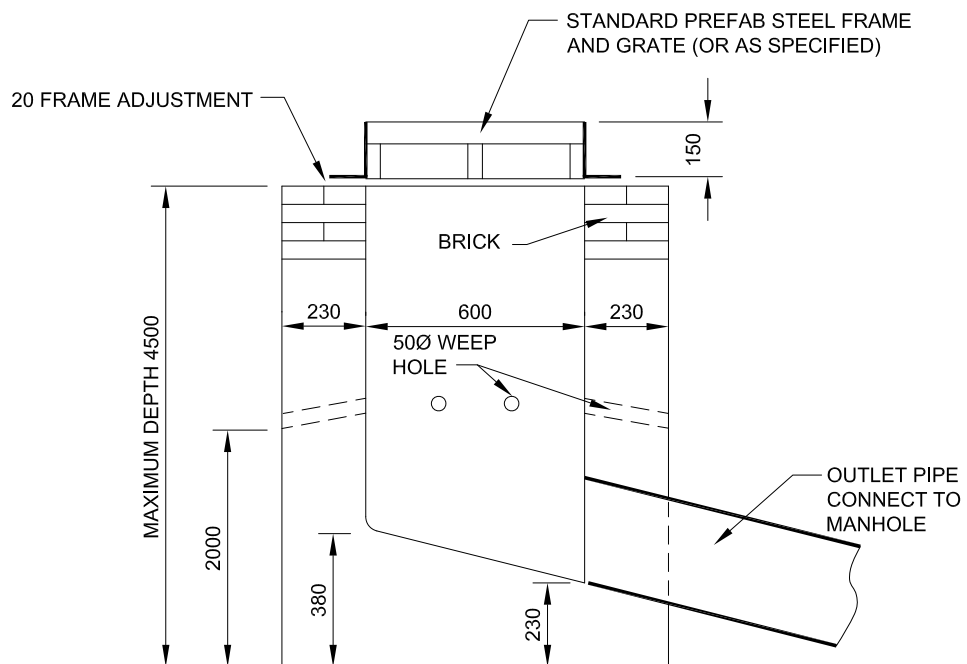


TOP VIEW



SECTION A-A

1. APPROVED SQUARE OR ROUND PRE-CAST UNITS MAY BE USED ON APPROVAL BY THE ENGINEER.
2. PORUS BACKFILL TO BE PLACED MINIMUM 300 ON ALL SIDES.
3. CONCRETE STRENGTH 35MPa AT 28 DAYS.
4. WEEP HOLES SHALL BE PLACED SO THAT THE BOTTOM OF THE WEEPER ON THE INSIDE AND THE TOP OF THE WEEPER ON THE OUTSIDE ARE LEVEL.



TRANSPORTATION AND WORKS
HIGHWAY DESIGN DIVISION

CATCH BASIN PUP

DRAWN BY:

DATE:

REV March 31, 2012

NOT TO SCALE

MARCH 2012

1240 -1