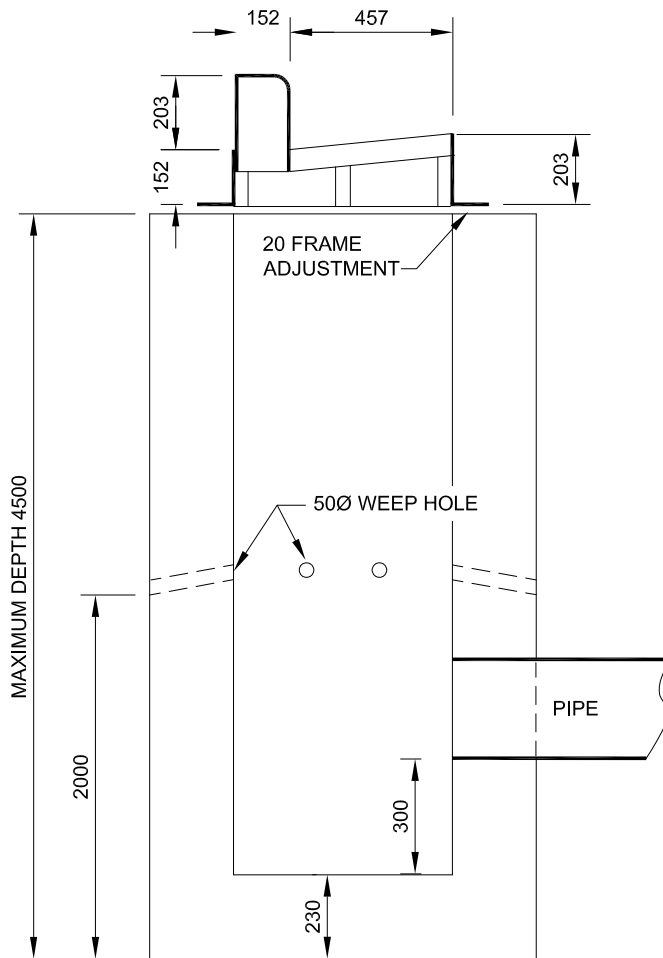
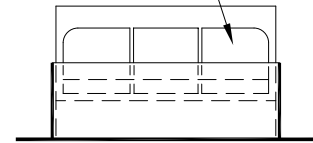


TOP VIEW



SECTION A-A

STANDARD PREFAB STEEL FRAME AND GRATE (OR AS SPECIFIED)



1. APPROVED SQUARE OR ROUND PRE-CAST UNITS MAY BE USED ON APPROVAL BY THE ENGINEER.
2. PORUS BACK FILL TO BE PLACED MINIMUM 300 ON ALL SIDES.
3. CONCRETE STRENGTH 35MPa AT 28 DAYS.
4. WEEP HOLES SHALL BE PLACED SO THAT THE BOTTOM OF THE WEEPER ON THE INSIDE AND THE TOP OF THE WEEPER ON THE OUTSIDE ARE LEVEL.
5. MAXIMUM DEPTH TO BE REDUCED IF SURROUNDING TOPOGRAPHY IS NOT LEVEL.