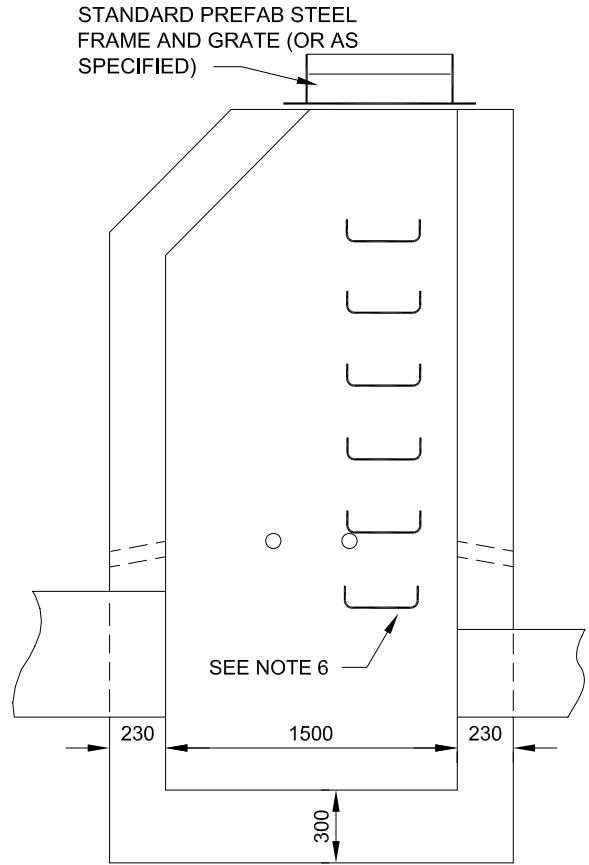


SECTION A-A



SECTION B-B

1. APPROVED SQUARE OR ROUND PRE-CAST UNITS MAY BE USED ON APPROVAL BY THE ENGINEER.
2. POROUS BACK FILL TO BE PLACED MINIMUM 300 ON ALL SIDES.
3. CONCRETE STRENGTH 35MPa AT 28 DAYS.
4. WEEP HOLES SHALL BE PLACED SO THAT THE BOTTOM OF THE WEEPER ON THE INSIDE AND THE TOP OF THE WEEPER ON THE OUTSIDE ARE LEVEL.
5. MAXIMUM DEPTH TO BE REDUCED IF SURROUNDING TOPOGRAPHY IS NOT LEVEL.
6. LADDER RUNGS TO BE 20M HI-BOND BARS GALVANIZED OR EQUAL.



TRANSPORTATION AND WORKS
HIGHWAY DESIGN DIVISION

SINGLE INLET LARGE INSPECTION CATCHBASIN

DRAWN BY:

DATE:

REV March 31, 2012

NOT TO SCALE