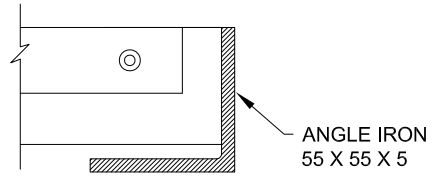
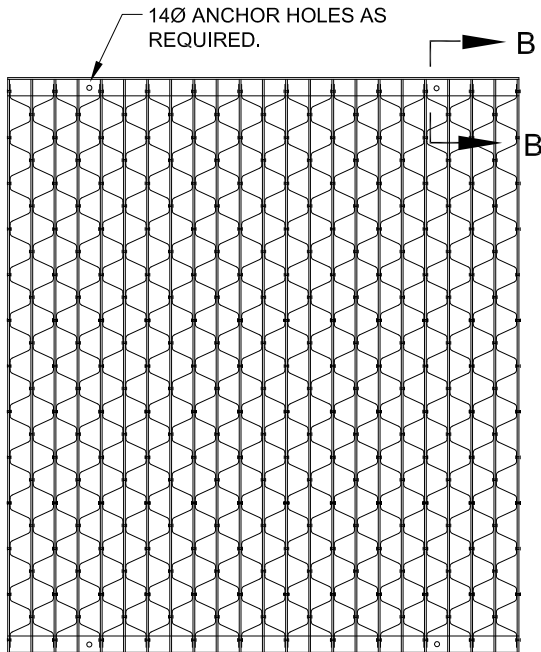
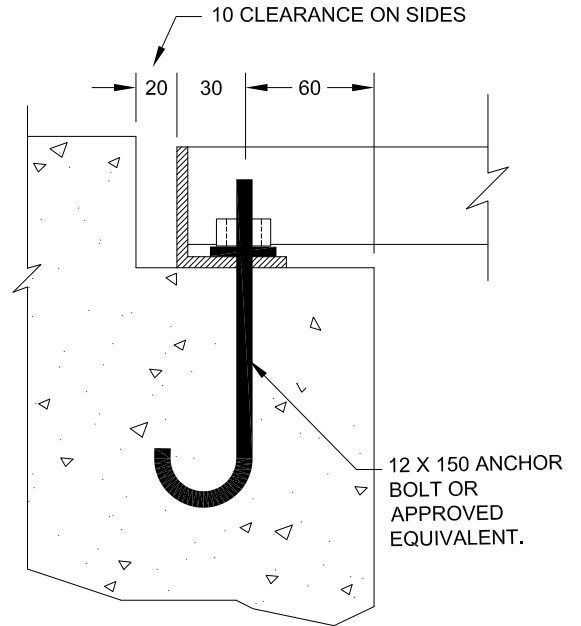


SECTION A-A



SECTION C-C



SECTION B-B

MATERIALS

BEARING BAR MINIMUM TENSILE STRENGTH SAE-1015
 RETICULE BARS MINIMUM TENSILE STRENGTH SAE-1010
 RIVETS FLAT HEAD.

FINISH

ALL SURFACES SHALL BE PAINTED WITH ONE SHOP COAT OF ASPHALT OR TAR BASE BLACK PAINT, HAVING A MINIMUM SOFTENING POINT OF 70°C

WELDING

END BEARING BARS TO BE WELDED TO ANGLE BAR ALONG BOTH LEGS WITH A 5MM FILE WELD. STANDARD METAL GRATING INSTITUTE MARKING RF-37-5.
 RETICULE BARS MAY BE CRIMPED OR STRAIGHT, MAXIMUM LENGTH OF THE RETICULE BAR PARALLEL TO THE BEARING BAR IS 30 AT EACH RIVET.



TRANSPORTATION AND WORKS
 HIGHWAY DESIGN DIVISION

**TYPICAL DITCH INLET
 GRATING DETAIL**

DRAWN BY:

DATE:

REV 02-01-10

NOT TO SCALE