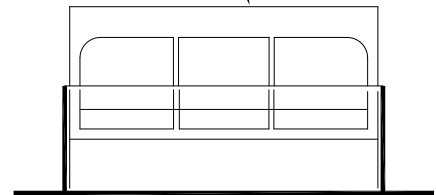
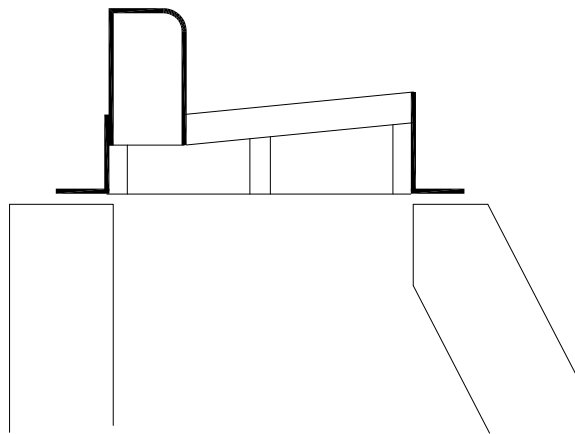


STANDARD PREFAB STEEL
FRAME AND GRATE (OR AS
SPECIFIED)



TRANSPORTATION AND WORKS
HIGHWAY DESIGN DIVISION

STANDARD CURB AND GUTTER CASTING

DRAWN BY:

DATE:

REV 02-01-10

NOT TO SCALE

MARCH 2011

1266 -1