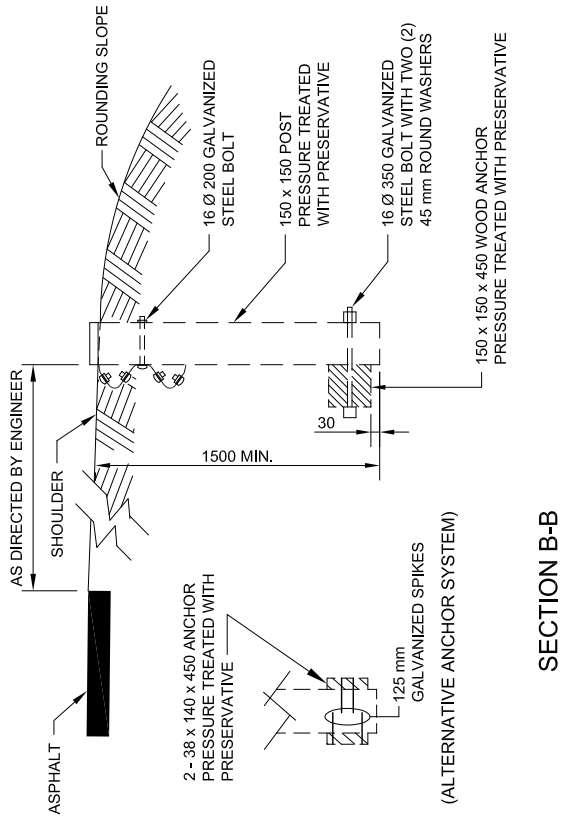
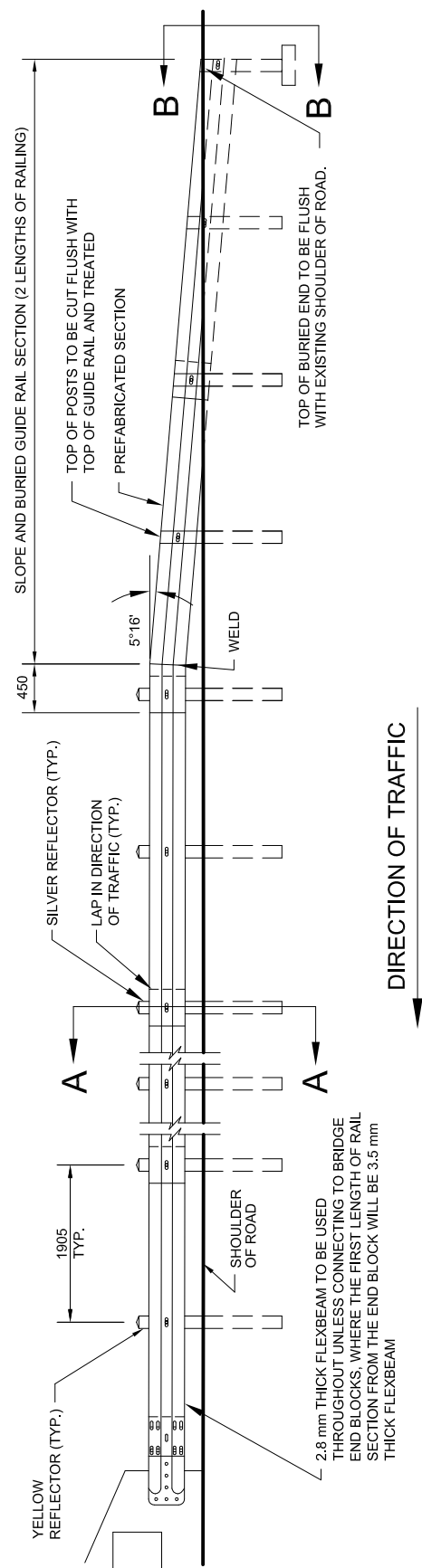


SECTION A-A



SECTION B-B



NOTES:
 GUIDE RAIL WITH ADDITIONAL POSTS c/w OFFSET BLOCK TO BE PLACED UP TO A MINIMUM OF 7620 mm FROM EACH END BLOCK FOR ALL BRIDGES. UNLESS OTHERWISE SPECIFIED, SLOPED AND BURIED GUIDE RAIL OR ADDITIONAL GUIDE RAIL SHALL BE AS PER STANDARD INSTALLATION. INTERMEDIATE POSTS TO BE INSTALLED AS INDICATED. SEE SPECIFICATIONS BOOK, SECTION 640, WHERE APPROPRIATE.