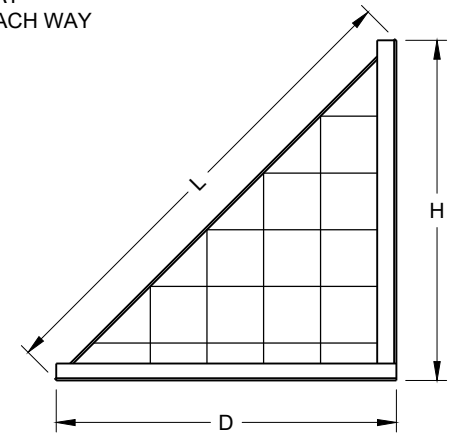
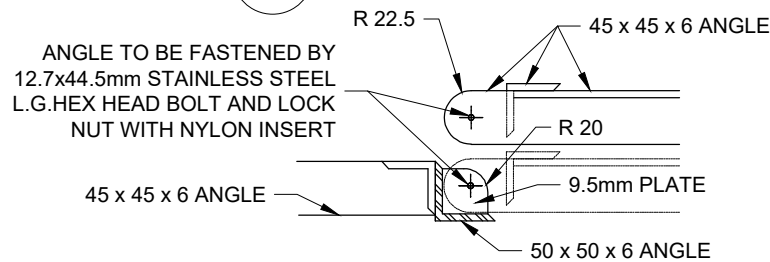


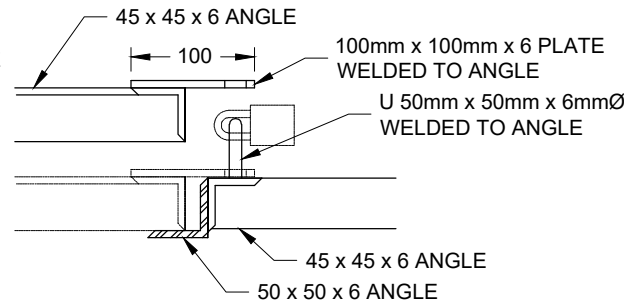
**ELEVATION "A"**



**ELEVATION "B"**



**PIVOT DETAILS**



**LOCKING DETAILS**

**NOTES:**

1. FRAMING TO BE 45x45x6 ANGLE EXCEPT WHERE INDICATED, ALL JOINS FULLY WELDED.
2. ALL JUNCTIONS TO BE SPOT WELDED.
3. ALL DIMENSIONS ARE IN MILLIMETERS UNLESS OTHERWISE NOTED.
4. ALL EXPOSED METAL TO BE PAINTED WITH RED OXIDE PRIMER
5. RACK TO BE ATTACHED USING 16mm ANCHORS AND BOLTS AT 300mm SPACING
6. ALL WELDING TO BE IN ACCORDANCE WITH THE LATEST EDITION OF CSA W59.

PIPE DIAMETER	DIMENSIONS	
	D,H,W	L
600	1200	1698
750	1350	1910
900	1500	2121
1050	1650	2333
1200	1800	2545
1350	1950	2757
1500	2100	2970

**MUNICIPAL MASTER SPECIFICATIONS**

**DEBRIS RACK**

**DRAWING NUMBER 04070**

**DATE:**

**APRIL 2023**

**SCALE:**

**N.T.S.**