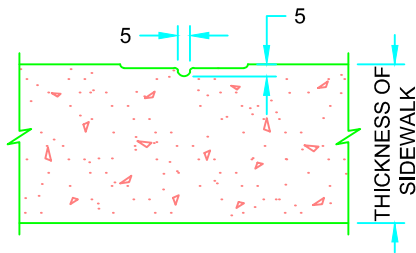
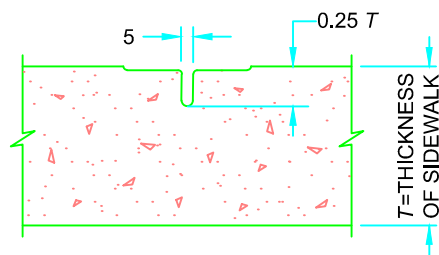


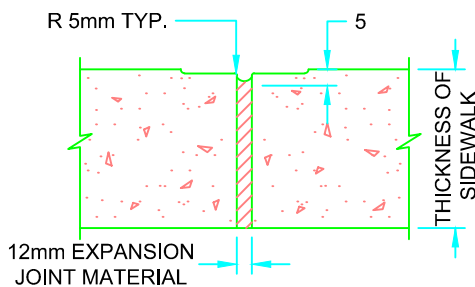
**TYPICAL SECTION**



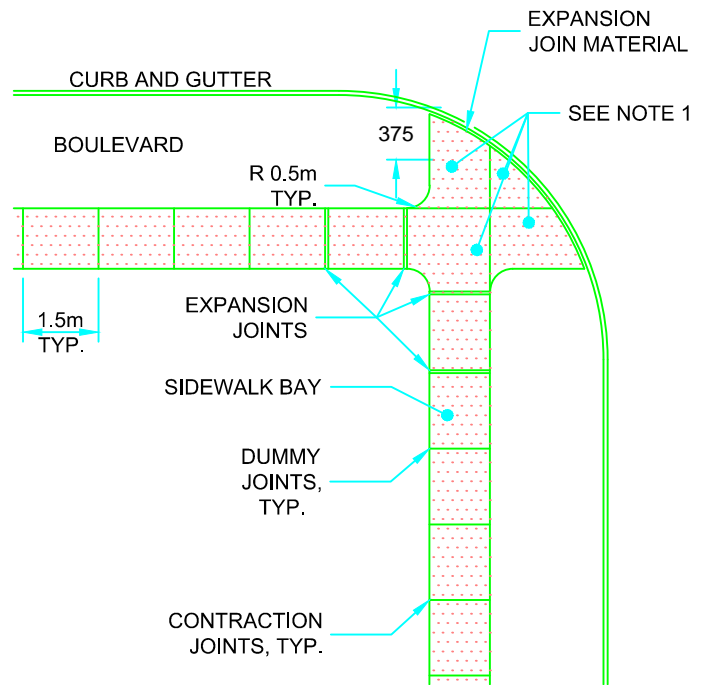
**DUMMY JOINT**



**CONTRACTION JOINT**



**EXPANSION JOINT**



**JOINT LAYOUT**

**NOTES:**

1. SIDEWALK THICKNESS AT RESIDENTIAL DRIVEWAYS AND ADJACENT TO CURB SHALL BE 150mm. AT COMMERCIAL AND INDUSTRIAL DRIVEWAYS, THE THICKNESS SHALL BE 200mm.
2. SIDEWALK WIDTH/LENGTH IS PROJECT SPECIFIC AND SHALL BE DETERMINED BY ENGINEER.
3. THIS STANDARD DRAWING TO BE READ IN CONJUNCTION WITH STANDARD DRAWING 04150.
4. ALL DIMENSIONS ARE IN MILLIMETERS UNLESS OTHERWISE SHOWN.

**MASTER SPECIFICATIONS**

**CONCRETE SIDEWALK**

DRAWING NUMBER 04100

DATE: MARCH 2016

SCALE: N.T.S.