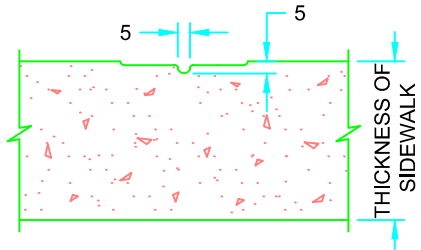
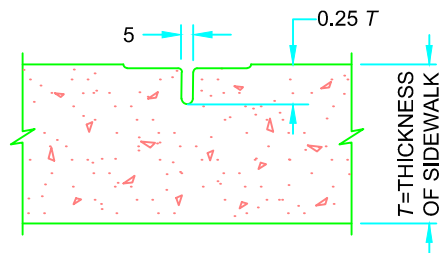


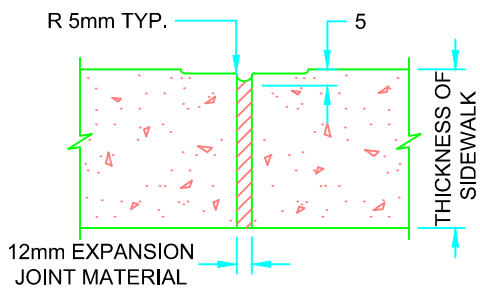
TYPICAL SECTION



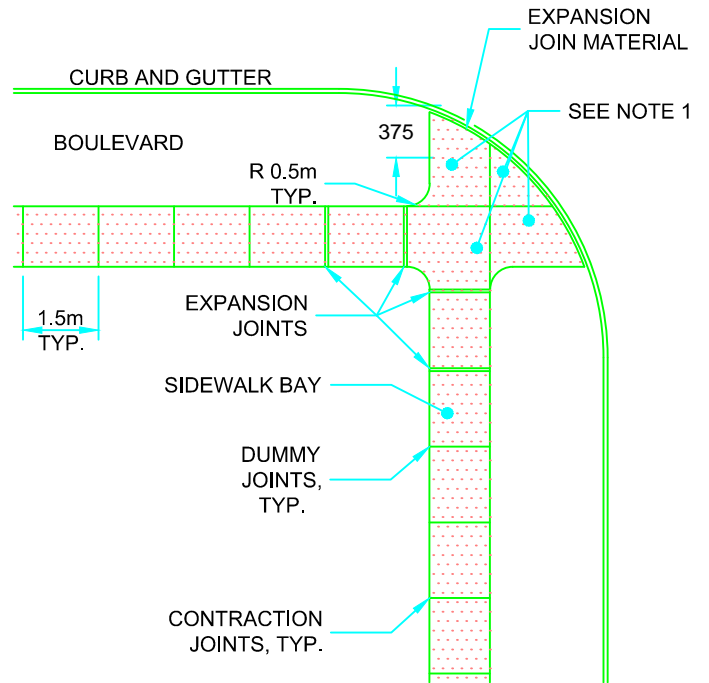
DUMMY JOINT



CONTRACTION JOINT



EXPANSION JOINT



JOINT LAYOUT

NOTES:

1. SIDEWALK THICKNESS AT RESIDENTIAL DRIVEWAYS SHALL BE 150mm. AT COMMERCIAL AND INDUSTRIAL DRIVEWAYS, THE THICKNESS SHALL BE 200mm.
2. SIDEWALK WIDTH SHALL BE INCREASED TO 2.4m AT SCHOOLS, BUS STOPS, AND OTHER HIGH PEDESTRIAN AREAS. SIDEWALK LENGTH IS PROJECT SPECIFIC AND SHALL BE DETERMINED BY ENGINEER.
3. THIS STANDARD DRAWING TO BE READ IN CONJUNCTION WITH STANDARD DRAWING 04150.

MASTER SPECIFICATIONS

CONCRETE SIDEWALK

DRAWING NUMBER 04100

DATE: FEBRUARY 2019

SCALE: N.T.S.