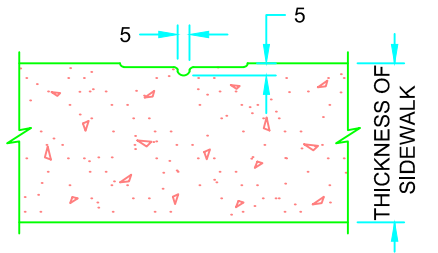
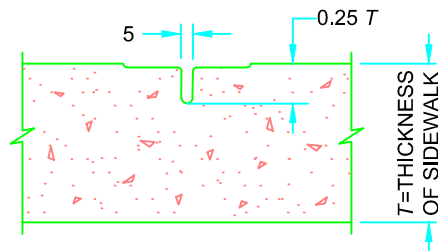


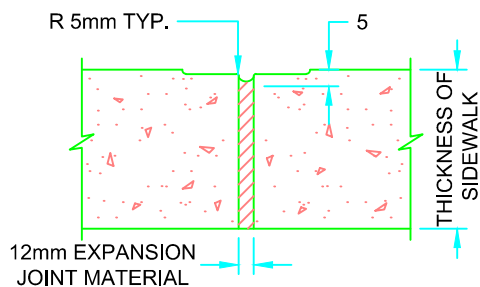
TYPICAL SECTION



DUMMY JOINT



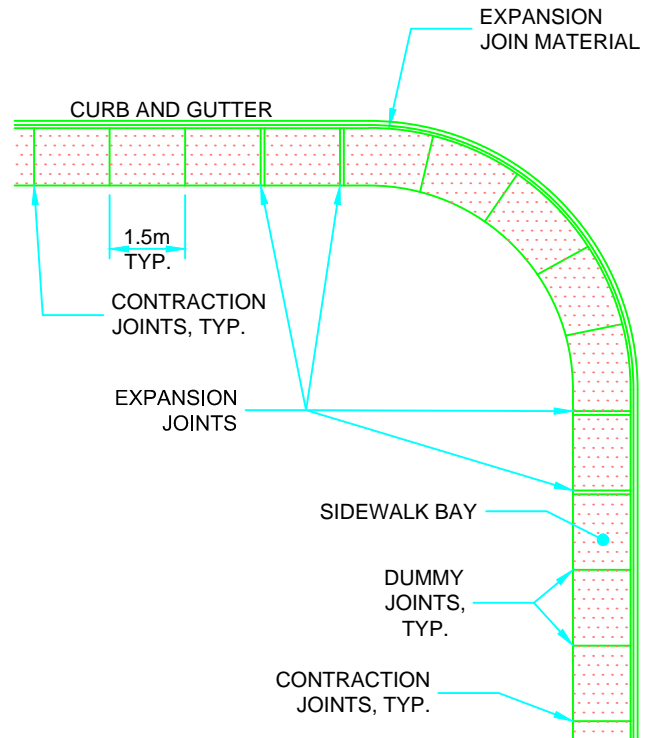
CONTRACTION JOINT



EXPANSION JOINT

NOTES:

1. SIDEWALK THICKNESS AT RESIDENTIAL DRIVEWAYS ADJACENT TO CURB SHALL BE 150 MM; AT COMMERCIAL AND INDUSTRIAL DRIVEWAYS, THE THICKNESS SHALL BE 200mm.
2. SIDEWALK WIDTH AND LENGTH ON MAJOR ROADWAYS, AND AT SCHOOLS, BUS STOPS, AND OTHER HIGH PEDESTRIAN AREAS SHALL BE DETERMINED BY ENGINEER.
3. THIS STANDARD DRAWING TO BE READ IN CONJUNCTION WITH STANDARD DRAWING 04150.
4. ALL DIMENSIONS ARE IN MILLIMETERS UNLESS OTHERWISE SHOWN.



JOINT LAYOUT

MASTER SPECIFICATIONS

CONCRETE SIDEWALK ADJACENT TO CURB AND GUTTER

DRAWING NUMBER 04130

DATE: MARCH 2016
SCALE: N.T.S.