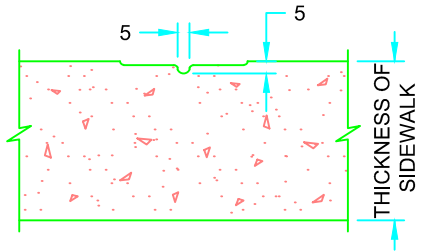
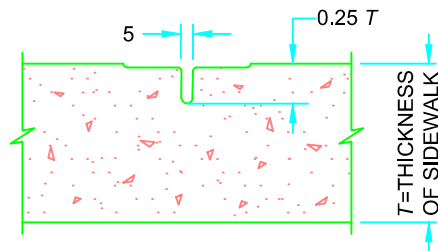


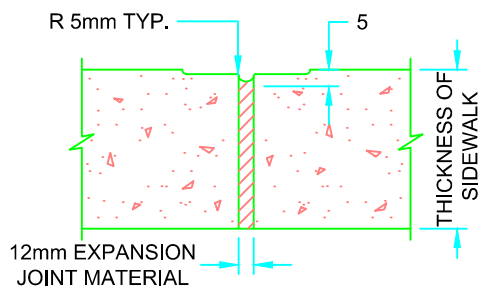
TYPICAL SECTION



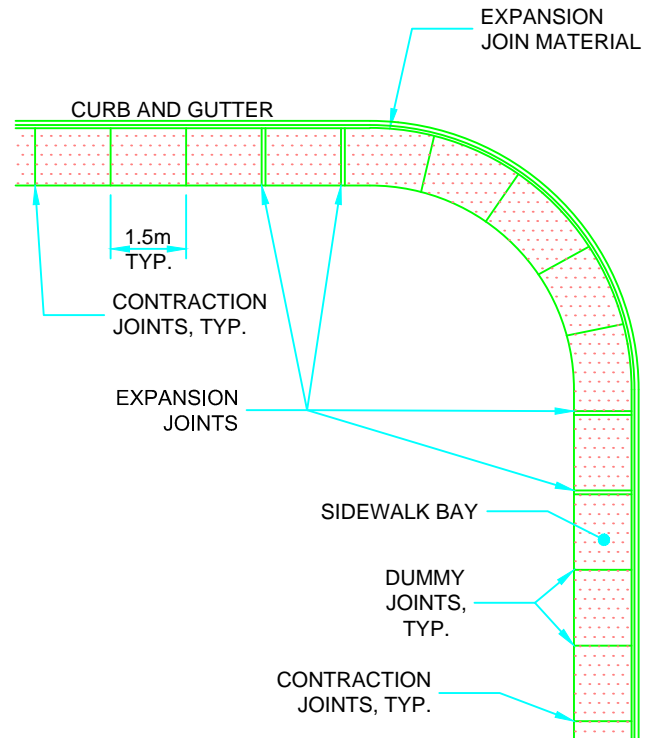
DUMMY JOINT



CONTRACTION JOINT



EXPANSION JOINT



JOINT LAYOUT

NOTES:

1. SIDEWALK THICKNESS AT RESIDENTIAL DRIVEWAYS SHALL BE 150 MM; AT COMMERCIAL AND INDUSTRIAL DRIVEWAYS, THE THICKNESS SHALL BE 200mm.
2. SIDEWALK WIDTH AND LENGTH ON MAJOR ROADWAYS, AND AT SCHOOLS, BUS STOPS, AND OTHER HIGH PEDESTRIAN AREAS SHALL BE DETERMINED BY ENGINEER.
3. ALL DIMENSIONS ARE IN MILLIMETERS UNLESS OTHERWISE SHOWN.

MASTER SPECIFICATIONS

CONCRETE SIDEWALK ADJACENT TO CURB AND GUTTER

DRAWING NUMBER 04130

DATE: MARCH 2022

SCALE: N.T.S.