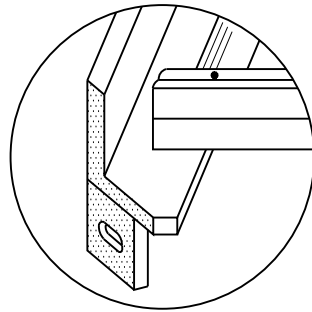


**SECTION A-A
GRATING OPEN**

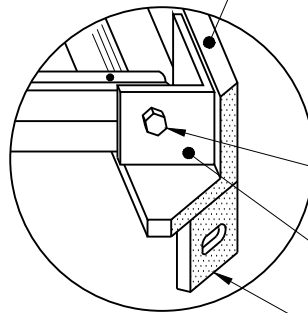
ONE RUNG AT
GRATE LEVEL,
TYP.

THREE RUNG
ABOVE GRATE,
TYP.



DETAIL A

SUPPORT, TYP.

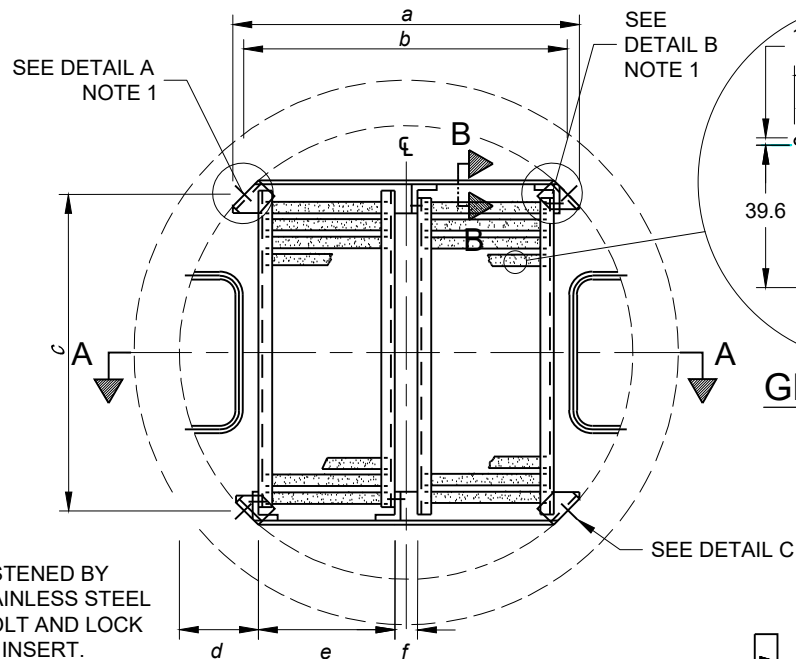


DETAIL B

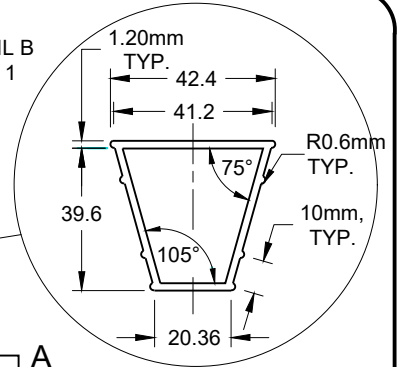
ANGLE TO BE FASTENED BY
12.7 X 44.5mm STAINLESS STEEL
L.G. HEX HEAD BOLT AND LOCK
NUT WITH NYLON INSERT.

HINGE BRACKET

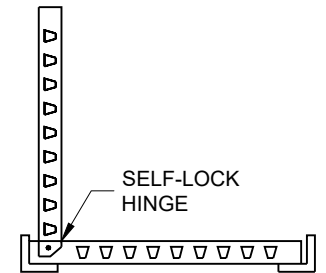
MOUNTING BRACKET,
TYP. (SEE DETAIL C)



**DETAIL OF GRATING
AND BOLT-ON SUPPORT PLAN**



**GRATING RUNG
DETAIL**

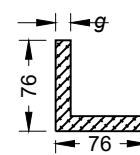


**OPEN POSITION
SIDE VIEW**

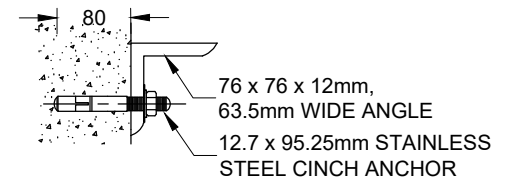
MH Diameter	No of Grates	a	b	c	d	e	f	g
1200	2	900	850	850	225	352	65	10
1500	2	1128	1078	1078	311	419	65	12
1800	3	1344	1293	1293	308	360	65	12
2400	4	1774	1724	1724	401	360	65	12

NOTES:

1. ALL HINGE BRACKETS AND MOUNTING BRACKETS SHALL BE WELDED ALL AROUND TO SUPPORT ANGLE.
2. ALL ALUMINUM IN CONTACT WITH CONCRETE SHALL BE THOROUGHLY COATED WITH ASPHALT PAINT.
3. MAINTENANCE HOLE DEPTH BETWEEN 5.0m AND 10.0m, GRATE SHALL BE PLACED AT MIDPOINT. MAINTENANCE HOLE DEPTH BETWEEN 10.0m AND 15.0m, GRATES SHALL BE PLACED AT THIRD-POINTS.
4. ALL FASTENERS SHALL BE 304 STAINLESS STEEL.
5. ALL WELDING SHALL BE ACCORDING TO CSA W47.2 AND W59.2.
6. ALL ALUMINUM COMPONENTS SHALL BE 6000 SERIES STRUCTURAL ALUMINUM.
7. ALL DIMENSIONS ARE IN MILLIMETERS UNLESS OTHERWISE NOTED.
8. ALL WELDING TO BE IN ACCORDANCE WITH THE LATEST EDITION OF CSA W59.



SECTION B-B



DETAIL C

**MUNICIPAL MASTER
SPECIFICATIONS**

**ALUMINUM SAFETY PLATFORM FOR
CIRCULAR MAINTENANCE HOLES**

DRAWING NUMBER 04270

DATE:

APRIL 2023

SCALE:

N.T.S.