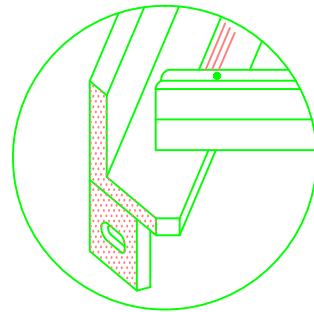
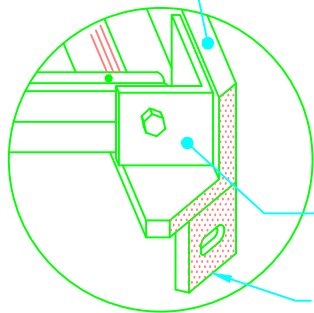


**SECTION A-A  
GRATING OPEN**



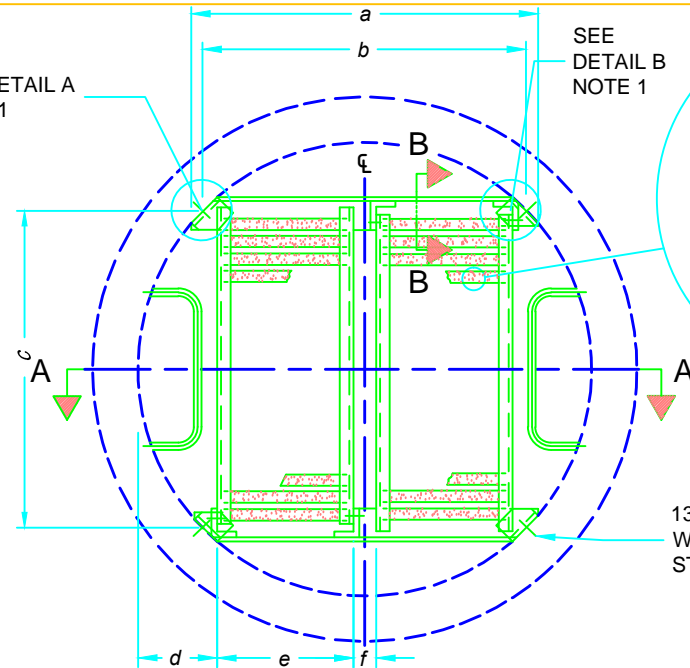
**DETAIL A**



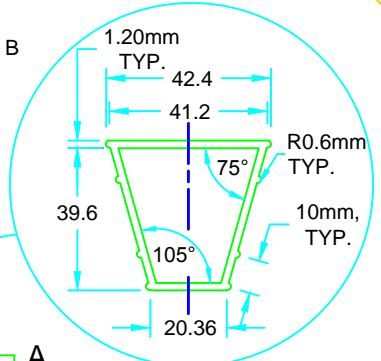
**DETAIL B**

SEE DETAIL A  
NOTE 1

SEE  
DETAIL B  
NOTE 1

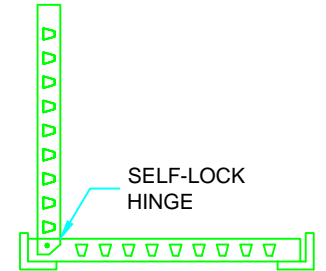


**DETAIL OF GRATING  
AND BOLT-ON SUPPORT PLAN**

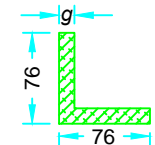


**GRATING RUNG  
DETAIL**

13mm DIA. X 95mm LONG  
WEDGE ANCHOR, STAINLESS  
STEEL, TYP.



**OPEN POSITION  
SIDE VIEW**



**SECTION B-B**

MH Diameter	No of Grates	a	b	c	d	e	f	g
1200	2	900	850	850	225	352	65	10
1500	2	1128	1078	1078	311	419	65	12
1800	3	1344	1293	1293	308	360	65	12
2400	4	1774	1724	1724	401	360	65	12

**NOTES:**

- ALL HINGE BRACKETS AND MOUNTING BRACKETS SHALL BE WELDED ALL AROUND TO SUPPORT ANGLE.
- ALL ALUMINUM IN CONTACT WITH CONCRETE SHALL BE THOROUGHLY COATED WITH ASPHALT PAINT.
- MAINTENANCE HOLE DEPTH BETWEEN 5.0m AND 10.0m, GRATE SHALL BE PLACED AT MIDPOINT. MAN HOLE DEPTH BETWEEN 10.0m AND 15.0m, GRATES SHALL BE PLACED AT THIRD-POINTS.
- ALL FASTENERS SHALL BE 304 STAINLESS STEEL.
- ALL WELDING SHALL BE ACCORDING TO CSA W47.2 AND W59.2.
- ALL ALUMINUM COMPONENTS SHALL BE 6000 SERIES STRUCTURAL ALUMINUM.
- ALL DIMENSIONS ARE IN MILLIMETERS UNLESS OTHERWISE SHOWN.

**MASTER  
SPECIFICATIONS**

**ALUMINUM SAFETY PLATFORM FOR  
CIRCULAR MAN HOLES**

DRAWING NUMBER 04270

DATE:  
MARCH 2016

SCALE:  
N.T.S.