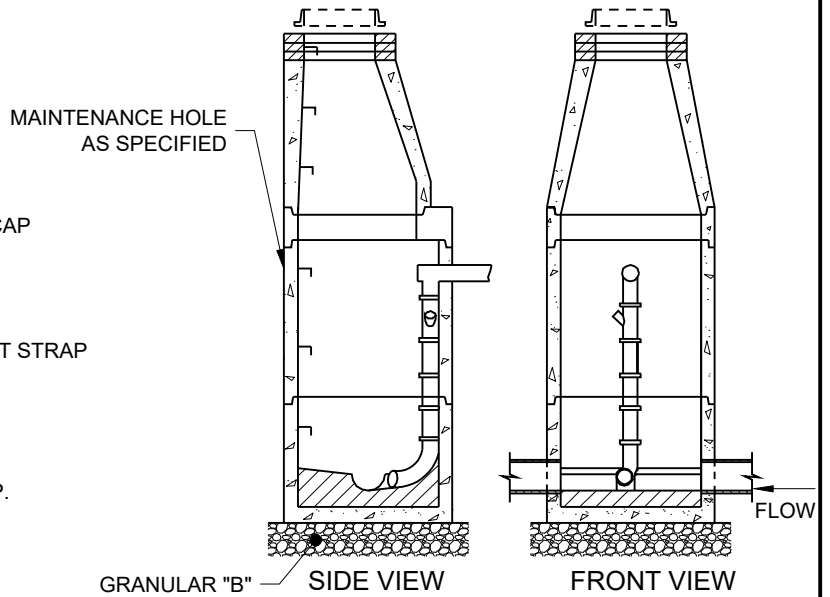
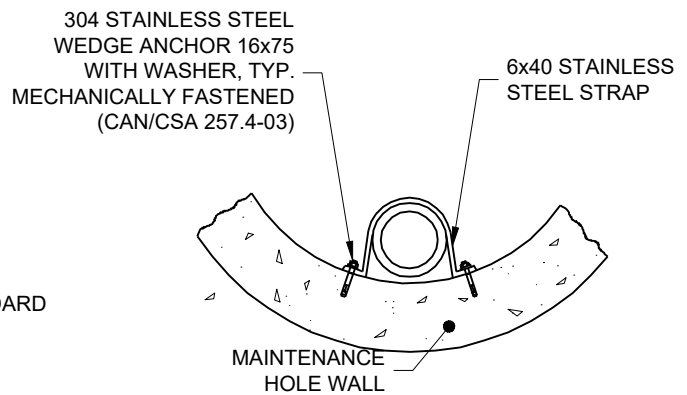


INTERNAL DROP STRUCTURE DETAIL



MAINTENANCE HOLE IN SECTION



FASTENER DETAIL

NOTES:

1. AT THE ELBOW, A STAINLESS STEEL STRAP IS REQUIRED AT BOTTOM OF BELL.
2. STRAPS SHALL NOT BE PLACED WITHIN 150mm OF ANY MAINTENANCE HOLE SECTION JOINT.
3. INTERNAL DROP STRUCTURE SHALL BE USED IN MAINTENANCE HOLES WITH A MINIMUM HEIGHT OF 600mm FROM THE INLET PIPE INVERT TO THE BOTTOM OF CHANNEL.
4. MINIMUM DIAMETER FOR MAINTENANCE HOLE TO BE 1500mm, MINIMUM INSIDE CLEARANCE OF MAINTENANCE HOLE TO BE 1200mm AFTER DROP STRUCTURE INSTALLED.
5. ALL DIMENSIONS ARE IN MILLIMETERS UNLESS OTHERWISE NOTED.

MUNICIPAL MASTER SPECIFICATIONS

INTERNAL DROP STRUCTURE FOR NEW MAINTENANCE HOLES

DRAWING NUMBER 04310

DATE: APRIL 2023

SCALE: N.T.S.